



TECHNICAL REPORT

2021/22





CONTENTS

4

INTRODUCTION

6

ROAD TO TURIN

12

THE FINAL

16

WINNING COACH:
SONIA BOMPASTOR

20

TECHNICAL
TOPICS

30

TEAM OF
THE SEASON

32

GOALS OF
THE SEASON

34

RESULTS AND
PLAYER OF
THE MATCH

36

GOALSCORING

40

POSSESSION

44

COUNTER
ATTACKS

46

PRESS AND
COUNTERPRESS

48

CONTROLLING
TRANSITIONS

50

SET PLAYS

52

GOALKEEPING

56

FITNESS

58

TEAM PROFILES

74

ROLL OF HONOUR

COVER:

Lyon's Kadeisha Buchanan
keeps Barcelona's Lieke
Martens at bay in the final

To view technical
reports from all UEFA
competitions please visit
uefatechnicalreports.com



Record crowds watched Barça's run to the final

INSTANT IMPACT

RECORD AUDIENCES IN STADIUMS AND ON TV
TUNED INTO A CAPTIVATING CAMPAIGN AS THE
NEW-LOOK CHAMPIONS LEAGUE HIT THE TARGET

After two pandemic-affected seasons, the UEFA Women's Champions League enjoyed much greater normality. And it was a new normality. In a radically reformed format, the six highest-ranked national associations were allowed to enter three clubs, with a further ten entitled to two participants. Qualifying was conducted in August and September 2021, initially via 15 four-team tournaments – 11 in the Champions Path and four in the League Path. This led into a second round, where 12 ties were played on a home-and-away basis to determine the teams who would enter the new 16-team group stage alongside the four automatic qualifiers – the champions of England, France, Germany and Spain. The 48 fixtures in the four groups of four were played on six matchdays between October and December.

For the first time, the competition featured centralised media rights for the group and knockout stages in addition to sponsorship agreements. Prize money was also substantially increased. As a result, the competition had a radically higher profile; attracted a TV

audience in excess of 14 million; and allowed several clubs to achieve record attendances – among them Barcelona, whose move from the Estadi Johan Cruyff at the club's training centre to the Camp Nou allowed the world record for a competitive match in women's football to be broken twice. A crowd of 91,553 saw the second leg of the quarter-final against Real Madrid and 91,648 attended the first leg of the semi-final against Wolfsburg. Overall, stadium audiences totalled 587,930 at an average of 9,799 per match.

This UEFA Technical Report aims to provide information, comment, analysis and debating points based on input from UEFA Technical Observers who attended matches from the quarter-final stage onwards and gathered for a meeting on the day after the final in Turin. The observers were current or former national team coaches: Corinne Diacre (France), Jarmo Matikainen (Finland), Nils Nielsen (Denmark), Vera Pauw (Netherlands), Hope Powell (England), Anna Signeul (Sweden), Monika Staab (Germany) and Jorge Vilda (Spain).



GROUP A



VfL Wolfsburg
(WOL)



Juventus
(JUV)



Chelsea FC
(CHE)



Servette FC
(SER)

GROUP B



Paris Saint-Germain
(PSG)



Real Madrid CF
(MAD)



Breidablik
(BRE)



WFC Kharkiv
(KHA)

GROUP C



FC Barcelona
(BAR)



Arsenal WFC
(ARS)



TSG 1899 Hoffenheim
(HOF)



HB Køge
(HER)

GROUP D



Olympique Lyonnais
(LYO)



FC Bayern München
(BAY)



SL Benfica
(BEN)



BK Häcken
(HAC)



Goalscorer Ada Hegerberg with the trophy after Lyon's final victory against Barcelona



DAWN OF A NEW ERA

THE NEW 16-TEAM GROUP STAGE
CAUGHT THE IMAGINATION FROM
THE START, BEFORE RECORD CROWDS
WATCHED THE DRAMA REACH ITS PEAK

Amid all the expectations attached to the ground-breaking group stage, it was easy to forget that more than 80 qualifying matches had been played to determine who would be in it. And there were surprises – especially in Round 2, the final hurdle before the starting line. Manchester City, quarter-finalists the previous season, seemed to be on track after a 1-1 draw in their away leg against debutants Real Madrid – only to lose 0-1 in a return match where Gareth Taylor's team failed to register a shot on target. Wolfsburg, eventual semi-finalists, stumbled over the line with a penalty shoot-out victory after sharing a 5-5 aggregate draw with Bordeaux.

GROUP STAGE

The group stage form book was merciless with the Nordic contestants – Breidablik of Iceland, HB Køge of Denmark and Häcken of Sweden – propping up three of the four tables. Benfica traded away wins with

Häcken and drew creditably with Bayern München (one of only three goalless games) but failed to prevent the German team and Olympique Lyonnais from cruising through. Similarly, WFC Kharkiv won in Iceland but could not challenge Real Madrid for second place in Group B, even though the Spanish club lost twice to Paris Saint-Germain and changed their head coach mid-season.

Suspense surfaced in Groups A and C. In the latter, no one could live with Barcelona, who averaged 72% possession, 733 passes and 32 goal attempts while winning all six games and leaving Arsenal and Hoffenheim to contest second place. After a 4-0 victory at home, Arsenal travelled to Germany for the return on Matchday 6 and, at 4-1 down, were within a goal of elimination. To rub salt into Hoffenheim's wounds, the knockout blow was an own goal.

In Group A, Swiss debutants Servette's six defeats were forgivable against heavyweight opposition in the form of Wolfsburg, Juventus and Chelsea. With ten points from



Karitas Tómasdóttir of Breidablik runs at the WFC Kharkiv defence



Chelsea's Fran Kirby bursts past Monica Mendes of Servette

four games, the latter were on track – only to be held 0-0 in London by a Juventus team that had split the group wide open with a 2-0 victory in Wolfsburg. When they travelled to Germany on Matchday 6, Chelsea were forced to stray from their habitual modus operandi. Whereas their percentage of long passing had fallen a few decimal points short of double figures in the other five group games, 21% of the 2020/21 silver medallists' passing was long; the number of passes fell from well over 500 to 340; and the pass completion rate dropped from 82% to 62% overall and 56% in the Wolfsburg half. In a three-way tie on 11 points, a 4-0 defeat spelt elimination for the London side.

“SUSPENSE SURFACED IN GROUP A AND C, WITH CHELSEA AND HOFFENHEIM MISSING OUT ON MATCHDAY 6”



QUARTER-FINALS

Wolfsburg's reward for top spot was another trip to London. Arsenal dominated possession but struggled to find the cutting pass through a compact, determined mid-block. After battling back to draw 1-1, the Gunners found it hard to cope with fierce pressing and fast attacking transitions in the return match and were beaten 2-0.

The draw had thrown up a feminine version of El Clásico. A clever defend-and-counter game plan allowed Real Madrid to gain the upper hand in the first half against Barcelona. But a half-time tactical switch was a cue for second-half dominance and a 1-3 scoreline. Urged on by a crowd of 91,553 in the return, Barça again rebounded from a 1-2 deficit with a strong second half to clinch an 8-3 aggregate win.

Paris's quarter-final was the only tie to require extra time. In Munich, Bayern delivered crosses and tested goalkeeper



Lyon's Damaris Egurrola and Martina Lenzi of Juventus contest an aerial ball



Congestion in the penalty area in the quarter-final second leg between Paris and Bayern

ROAD TO TURIN

Barbora Votíková to the limit. But set plays provided the only successes: two corners for the visitors; one free-kick for the home team. Then COVID-19 decided to join in. In Paris, Jens Scheuer had only two outfielders on the bench. But Bayern were resolute, enterprising, dominant in midfield and were good value for a 1-2 advantage after 90 minutes. Then the lack of fresh legs took its toll and an extra time equaliser sent the hosts through 3-2 on aggregate.

Lyon, in the meantime, were paying a first visit to Turin, where Juventus greeted them with a competitive spirit and efficient, collective defending. But, when 1-0 ahead, the visitors had right-back Ellie Carpenter sent off, prompting the home team to up the tempo, push forward and hit back for a 2-1 win. In France, Sonia Bompastor's side pressed hard and high, exploited pace on the wings, swarmed into shooting positions – and won 3-1. Their prize was a French version of El Clásico: a tie against arch-rivals Paris, their nemesis the previous season.



Arsenal keeper Manuela Zinsberger is put under pressure by Tabea Wassmuth of Wolfsburg



Irene Paredes of Barcelona tracks Real Madrid's Esther González in front of a record crowd

SEMI-FINALS

In Lyon, Paris were undone by defensive errors which gifted three goals to the home team, who pressed the ball in numbers and pre-empted any counterattacks. But the visitors' mental resilience was rewarded by an opportunist opening goal and a second-half penalty which kept the tie alive.

After a cagey start, the return match in Paris showcased high pressing by both teams, pace and athleticism by the hosts and goalkeeping by Christiane Endler that kept Lyon in the game. One-nil down at half-time, Paris, injecting Ramona Bachmann into midfield, played with more cohesion in the second half. Having equalised, they then drove forward to hunt down the goal that would have forced extra time. But urgency generated spaces for the visitors to exploit, and when Wendie Renard headed in a set play in the closing sequences, it was



Catarina Macario wheels away after scoring Lyon's third goal in the quarter-final first leg against Paris

game over. Lyon, 5-3 aggregate winners, were heading to Turin for a second time.

The identity of the final opposition came as no surprise. The first leg of the other semi-final had already encouraged Barça fans to book tickets. Another world record attendance of 91,648 at the Camp Nou saw the home team produce an exhibition of high-tempo, creative combination play, based on a 67% share of the ball. Wolfsburg set out to play a high-speed transition game with an advanced back line and aggressive 1v1 marking. Jonatan Giráldez's side, however, exploited this to pull the visitors out of shape and, within nine minutes, they were already two goals ahead. A second-half counterattacking combination move offered Wolfsburg a ray of light. But, by this time, Barça had doubled their lead and a late penalty rounded off a memorable 5-1 victory.



Clàudia Pina and Patricia Guijarro embrace at the end of Barcelona's first-leg win against Wolfsburg

LYON'S WILL TO WIN

A COMBINATION OF HIGH PRESSING, CLINICAL TRANSITION PLAY AND A FIERCE DETERMINATION TO REGAIN THE TROPHY ENABLED LYON TO DETHRONE HOLDERS BARCELONA AND CLAIM AN EIGHTH TITLE

Body language doesn't win games. But it can illustrate the will to win them. Serial champions Lyon, as if irritated by pundits who made Barcelona favourites for 'their' title, tackled the final in Turin with physical and psychological determination. And Sonia Bompastor became the first female coach to win the UEFA Women's Champions League in 13 years by devising a game plan that, as UEFA observer Hope Powell put it, "was tactically spot on and was implemented with drive, collective aggressivity and an attitude that could be described as 'the underdog mentality'." Vera Pauw added: "Lyon's coaching staff had done their homework and they knew how and where they could punish the opposing team."

As soon as Finnish referee Lina Lehtovaara signalled for the ball to start rolling on a balmy, sunlit evening, it became obvious that the 2022 final was going to be disputed by two teams with strong identities, technical mastery and big-game mentalities.

From the outset, Lyon set out to disrupt Barça's fluent combination play by pressing hard and high. TV images showed moments when the French side had seven outfielders in advanced positions for collective pressing, leaving a huge area of green before the three defenders came into view. Within minutes, the ploy paid off. Midfielder Amandine Henry snapped into a tackle midway into opposition territory, leapt away with the ball, took a few strides from left to right, and unleashed an unstoppable long-range shot into the roof of the net.

Shaken – or "confused" as head coach Jonatan Giráldez put it – by the early setback, Barcelona tried to play themselves back into the game with trademark high-tempo, purposeful possession play. They began to pose problems by exploiting the spaces behind midfielders Catarina Macario and



The diving Ada Hegerberg heads in Selma Bacha's cross for Lyon's second goal



Lindsey Horan, sometimes stranded in high positions after losses of possession.

The interchanging midfield trio of Alexia Putellas, Aitana Bonmatí and holding player Patri Guijarro was supplemented by Mariona Caldentey's infield running, opening the flank for left-back Fridolina Rolfö to express her attacking vocation, especially when Lyon's right-back Ellie Carpenter was withdrawn through injury within the first quarter-hour. This obliged centre-back Griedge Mbock Bathy to take her place while Kadeisha Buchanan teamed up with Wendie Renard in the centre of the back line of four. Barça looked threatening – and Christiane Endler was called on to display the goalkeeping talents that had seen Lyon through difficult moments in previous rounds.

On the other hand, difficulties in putting immediate pressure on the first pass made Barcelona look vulnerable when attacks broke down. And Lyon's transition play was good enough to punish them. Plan A was a long pass to target striker Ada Hegerberg, whose strength and athleticism provided a springboard for fast counters. Plan B was direct supply to Macario who, as soon as

she could see the ball was there to be won, cleverly moved over to exploit the vacant areas behind Rolfö while also combining with the speedy right winger Delphine Cascarino.

But it was a rapid attack on the other flank which created a second goal. Exuberant left-back Selma Bacha made a sustained upfield sprint to exchange the ball with Melvine Malard, and, nearing the by-line, delivered a sublime cross for Hegerberg, unchallenged, to head into the net. "We were trying to get a quick equaliser," Giráldez said, "but we were a bit out of position. We knew the key to the game was to control their transitions and for several minutes we weren't able to do that. We had to go deeper and that gave them a lot of energy."

Two goals in 23 minutes generated speculation about the number of ghosts from the past floating into the Barça subconscious: most notably, memories of the 2019 final between the same two teams when Lyon had taken a four-goal lead within half an hour. The psychological impact was compounded when another fast transition provoked chaos in the Barça box; a short pass to an opponent when there was every excuse for the defender to

“LYON'S GAME PLAN WAS TACTICALLY SPOT ON AND WAS IMPLEMENTED WITH DRIVE, COLLECTIVE AGGRESSIVITY AND AN UNDERDOG MENTALITY”



Lyon's Delphine Cascarino in full flight



Griedge Mbock
Bathy leads the Lyon
celebrations at full time

simply clear her lines; and a tap-in for Macario with her boots almost touching the goal line. A three-goal deficit against Lyon turned 'getting back into the game' into a tough proposition.

To make it even harder, Bompastor had, in the meantime, exploited a cooling break to make a tactical adjustment, instructing Horan to drop to become a second screening midfielder alongside Henry. This pre-empted Barça's overloads on the threshold of the back line and forced attack after attack to halt and reboot. The attacking tempo faded, generating frustration for striker Jenni Hermoso, forced to drop into midfield to receive, thereby restricting the depth of attacking options. With Bacha snapping into interceptions and tackles, Caroline Graham Hansen struggled to exploit her exceptional 1v1 abilities. The thousands of Barça fans in the crowd of 32,257 kept the decibels high, anxious to keep their team in the game.

They were rewarded. For once, Bacha was too late to cut out Graham Hansen, who broke free after a quick switch of play through midfield. And her trademark low cross was into the path of Putellas, who beat Endler with

a one-touch volley of high quality. With 3-1 on the scoreboard at half-time, the question was whether it was game over or game on?

During the interval, Giráldez replaced Hermoso with Asiat Oshoala, adding pace, strength, athleticism and depth to the Barcelona attack. But the game plan remained the same during a second half which showcased the qualities of the Lyon back line, led by the experienced, authoritative Renard. It also showcased Lyon's will to win, with every individual throwing herself into the collective endeavour. Barça remained loyal to their playing philosophy, probing for the second goal which might have injected demons into French minds.

They came close. Midway through the second half, Lyon's energy seemed to be ebbing; Barcelona looked stronger and pushed their opponents deeper. But the critical moments went the French side's way instead of letting Barça back into the game. Defensive efforts successfully slowed the tempo of attacking – and the tempo of the game itself. The Catalan supporters filled the stadium with whistling during the long stoppages while Lyon players received treatment. Overall, the ball was out of

"THE MARGINS
WERE
CLOSE, BUT
LYON WERE
THE MORE
EFFICIENT IN
BOTH BOXES"



Fridolina Rolfö consoles
Barcelona team-mate
Asisat Oshoala

play during 45 of the final's 101 minutes. Play was chopped into segments and Barça could not find a way to switch the momentum.

Giráldez added freshness by sending on Ana-Maria Crnogorčević for right-back Marta Torrejón and Lieke Martens (back from injury) for Caldentey. And, for the final push, he injected skilful midfielder Claudia Pina in place of Rolfö and switched to three at the back. But the manner and tempo of attacking remained unchanged. Bompastor, in the latter stages, withdrew three wide players (the two wingers and improvised right-back Mbock Bathy) but left the central core of her team intact.

When the final whistle put an end to a final of extraordinary intensity and quality, Lyon celebrated the club's eighth title as if it had been their first. "It was a very fine match and the margins were close," said UEFA observer Corinne Diacre. "Both teams created chances but Lyon were the more efficient in both boxes. Above all, they were confident but humble. They wanted to win and I think they deserved it." "It was an excellent final with the right winners," Nils Nielsen agreed. "And it was great fun to watch."

MATCH STATISTICS

TORINO 22
FINAL



BARCELONA

1-3

OLYMPIQUE LYONNAIS

SATURDAY 21 MAY 2022

Juventus Stadium, Turin

GOALS

0-1 Henry (6'), 0-2 Hegerberg (23'),
0-3 Macario (33'), 1-3 Putellas (41')

REFEREE

Lina Lehtovaara (Finland)

BARCELONA

- 1 Paños
- 2 Paredes
- 4 León
- 7 Graham Hansen
- 8 Torrejón
- 18 Crnogorčević 59'
- 9 Caldentey
- 22 Martens 59'
- 10 Hermoso
- 20 Oshoala 46'
- 11 Putellas
- 12 Guijarro
- 14 Bonmatí
- 16 Rolfö
- 6 Pina 75'

Coach Jonatan Giráldez

OLYMPIQUE LYONNAIS

- 1 Endler
- 3 Renard
- 4 Bacha
- 6 Henry
- 12 Carpenter
- 21 Buchanan 14'
- 13 Macario
- 14 Hegerberg
- 20 Cascarino
- 5 Morroni 81'
- 26 Horan
- 28 Malard
- 9 Le Sommer 72'
- 29 Mbock Bathy
- 23 Cayman 81'

Coach Sonia Bompastor



BOMPASTOR RAISES THE BAR

A WINNER AS A PLAYER AND NOW AS A COACH, SONIA BOMPASTOR'S AMBITION AND DRIVE TOOK LYON BACK TO THE TOP IN HER FIRST SEASON IN CHARGE



The eighth was a first. After seven wins with five different technicians on the bench, Sonia Bompastor became the first female coach to win the UEFA Women's Champions League for Olympique Lyonnais – and the first woman to lift the trophy as both player and coach, having played a midfield role when the French club defeated German opposition in the 2011 and 2012 finals. The victories represented high points in a 25-year playing career during which the daughter of a Portuguese referee accumulated 309 appearances in France and the United States along with 156 games for France embracing three EUROs and two World Cups. Victory in Turin came just over a year after she had succeeded Jean-Luc Vasseur on the OL bench.

When you arrived, what was the first thing you focused on?

What was important for me was to develop a dynamic and a sense of cohesion among the staff and the players, but also in terms of the dressing room. Quite simply, I thought it was very important to be very clear about my expectations. To ensure that the players knew exactly, in minute detail, what the context was and what the club's goals were, and above all what my expectations of them were – my expectations of what the stakes were in a sporting sense, in an individual and collective sense, at team and player level. Above all I stressed the framework that we'd be working within, because I thought it was important to give them that level of detail so that things could run as smoothly as possible and we could move forward giving 100% and all in the same direction.

I work from the principle that when you are a manager at the highest level, there are lots of things that come together... Whatever the discipline, whether it's in sport or in business, the keys to success are often the same. So, after that, the idea is to be able to put that framework in place and the role of the manager is to try to strike the right balance between strictness, the closeness you have to have with the players, the trust and ensuring your demands are always properly placed at the right time over the course of the season. There are stronger moments and weaker moments and you have to be able to adapt to every situation so that the players remain confident and keep performing throughout the season.

In your opinion, what are the main changes you've brought in since the beginning?

On the pitch, in the way we train, I've set the bar a little bit higher regarding the volume and the intensity of training in comparison to what the girls were used to during the previous season. It's something quite personal. As a player, when I was going on the pitch during training or matches, I always gave my best every time. I was highly competitive so I really wanted the level demanded to be as high as possible to meet the expectations of the whole club and its president, who is ambitious and has expectations regarding results – which is completely reasonable considering the resources he provides.

Which team caused you the most trouble during this Champions League season?

Without a doubt, Paris Saint-Germain. We know the team thoroughly. It's a high-quality team as a squad and individually. We knew when preparing for matches that they were the team with the most resources to put us in a difficult position. I'm quite happy with the results against Paris last season. The players played very well. During the Champions League, the best match of the competition was probably the semi-final second leg at the Parc des Princes. Everything was there: intensity in the match, it was a show, there was suspense regarding the result, there was quality in the play. The stadium was full, so that made us happy. The atmosphere was unbelievable. When you experience this, a lot of good things come together.

What were your solutions as a coach for this semi-final?

It's difficult to reveal everything as Paris Saint-Germain remains an opponent. There are general things we observed. Paris has a performing line of attack. They have a midfield that projects a lot, with Sara Däbritz and Grace Geyoro. So, we need to be capable of holding this offensive line. We need the girls to realise, not only against Paris but also during the final against Barcelona, that the

team we are facing has high possession. They need to mentally accept not having the ball all the time. They need to work hard on defence, individually or collectively. This awareness is important. When I saw matches at the UEFA Women's EURO, I think that in high-level women's football, performing well in defence, is important. You have higher chances of winning the match. When you play for Olympique Lyonnais, you are ambitious and competitive. We enforce our style on the opponent. When you have the quality of players that we have, we rely on the use of the ball and the quality of our players to use the ball the right way. We saw during the match that we were capable of scoring goals against Paris. Even during the final against Barcelona, we were capable of scoring three goals. It is important to be in control.

How do you define your style of play?

There is a common goal at the club. In fact, at OL there has always been a strong DNA and a public that's very demanding, rightly so. As a result, when you go to the stadium you obviously see a team that wins games, whether it's the men's team or women's team. The fans want to see the players give their all when they enter the pitch. The players will be judged on their performance and the fans want to see a show when the players have the ball at their feet as well as an offensive game plan. For some coaches, the most important thing when you come to a club – and maybe an advantage I had – was that OL is the club in my heart. I know the expectations; the people who set them.

So, as a coach, you have to make sure that in your vision and in your philosophy, you implement a style of play that meets expectations. It should also meet your players' expectations because, as a coach, you have to be able to connect with your players to be able to implement a style of play that they can buy into and suits their qualities.

You had to deal with quite a few injuries last season. Did you adapt according to the players you had at your disposal or does this Lyon team always have to play in its own attacking style?

Our philosophy and our vision remain the same. Our style of play relies on clear offensive and defensive principles, but there can be little tweaks according to the players you're going to field, of course. I think we're really good

at analysing our opponents, with the help of my assistants, Maeva Ruiz the video analyst. That sometimes allows us to adapt our game accordingly, or at least understand how to line up defensively. However, I would say that at least 70% is all about us. We change maybe 10, 20 or 30% of the way we play offensively and defensively based on an opponent's qualities and characteristics.

Getting a player back after injury is not always easy to manage. How did you get Ada Hegerberg back to top form after such a long absence?

What is important to point out is that I didn't manage on my own. This is when the role of the staff is paramount. There are athletic trainers and the medical staff around me who were with Ada every day to make her perform as well as possible, including Antonin Da Fonseca, who was present with her every day in moments that were not always easy. As soon

“WE WANT TO BE INNOVATIVE AND STAY ONE STEP AHEAD”





as she was able to come back, he put in place a roadmap that needed frequent adaptation.

There were moments in the season when her performances were not at the level we were expecting. But it was important for her confidence to send positive signals. We put her in the group early on. We put her in matches when she was not entirely ready. But we knew that these signals would make her more confident mentally and push her forward, even during moments of doubt in January and February. She managed to finish the season performing well on the field and in the group. She is a mental and performance leader. She brought a lot. I am proud, as an individual, that she was able to come back to this level.

How would you describe the role of Amandine Henry?

Amandine is a player I rely a lot on from a sporting point of view. We talk a lot. She's a very experienced player both with club and country and I thought she played very well for us this year. When you look at her game time and her influence on the team, she's had a real impact. I'm delighted that her performance

and the goal she scored in the UEFA Women's Champions League final allowed her to grab the headlines. As a player, her contribution isn't always fully appreciated. She works very hard behind the scenes and she has a very strong influence on the team. I'm counting on her a lot again for this season and if she can reach the same level, she is going to be one of the first names on my team sheet, for sure.

After an appraisal of last season, have you pinpointed things you would like to improve or develop?

I think we're pretty innovative on this front. In our staff we have a psychological assistant who helps with managing the players' emotions, especially self-confidence and handling stress. Even if they have a lot of experience, they are still players who have to put up with a furious pace. There can be sluggish periods. We have young non-playing staff who are very much invested in our projects and offer a lot to the players. We also have Manon Revelli who steps in to take charge of cohesion and the team dynamics. I think that's innovative. In my view, it's important to get the players' opinions on how

we're working throughout the season. There are moments where it works well and others where it works less well. The players have to know that we're here to listen to them at any time. In terms of communication, they really can come and talk to us. The important thing is their well-being, both physical and mental. I think the player care at Lyon is personalised as much as possible so that each individual can serve the collective aims. I think that shows we have the desire to be innovative and stay one step ahead in terms of performance.

When do you communicate your starting XI?

I don't have a fixed rule. You have ways to do things, but which can be adapted depending on weeks and games. I can announce the starting XI quite early in the week for some games. In any case, even if you don't announce it, your tactical work depends on it. As a result, you give quite precise workflows to the players so they can work on their link-up play. When they work, be it on a defensive or attacking level, it allows them to know exactly what I expect from them and what role they each have in the starting XI. As for the announcement, I tend to wait for the last moment on matchday because I work on the assumption that until the very last training session a day before the game, things can happen. I can sometimes put up a smokescreen, as I want to get everyone involved and have all the players focused.

The idea in my working process... I won't say that I justify myself, but if players need explanations, I'm quite open to giving them. But I'm the one who decides when. After a training session, a player can feel frustrated so I don't like to see her straight after when having a chat with her may not go as well as expected.

What is a typical day at Olympique Lyonnais?

We often arrive around 8.30am at the club. I'm often among the first to arrive. Then, we usually set up coordination meetings with various staff members to set out the objectives for the day, pass on information so that everyone can be efficient and in working order. The players often spend some prevention time with fitness coaches and physios. We generally train from 10.30 or 11.00am to 12:00 or 12:30pm. Then having lunch at the club is mandatory, both for staff and players, in order to create a friendly and sharing moment. Early afternoon, it's recovery and healthcare time for the players. As for the staff, we set up meetings again to organise the next day and move forward with the club project. So, in general, we don't leave before 5.30 or 6.00pm.



Lyon players rush to their fans at the final whistle

Paris defender
Sakina Karchaoui
holds off Bayern's
Lineth Beerensteyn



TECHNICAL TOPICS

THE PRESS, IMPROVED
CONDITIONING, BUILDING
FROM THE BACK AND
INFLUENTIAL WING PLAY
WERE ALL HIGH ON THE
TECHNICAL OBSERVERS'
AGENDA FOR DISCUSSION
FOLLOWING A "TACTICALLY
FASCINATING CAMPAIGN"

"From the start, Lyon took the game in hand by using a united block to put Barcelona under the highest pressure and deny them any time or space to play their game. Lyon tackled and battled for the ball with a high forward press and made immediate transitions to attack after winning possession. It resulted in Barcelona not being able to start the game in the way they would have wanted." The words, culled from Vera Pauw's technical observer's notebook at the final, serve to illustrate that the pressure and intensity of Women's Champions League football is being steadily ratcheted up. Scrolling back to pre-pandemic technical reports, it is only four years since Jarmo Matikainen commented, "One of the factors is that so many teams are not used to high pressing and don't really know how to cope with it. If you want to challenge the best, you need to start finding solutions – and maybe this is a problem that a lot of teams don't encounter in their national leagues."

PRESSING MATTERS

IMPOSING OR BEATING THE PRESS IS KEY TO SUCCESS

It may have been coincidence that the final featured the two teams who recorded the highest number of regains in the attacking third. It may have been coincidence that Lyon and Barcelona then converted ball recoveries in advanced areas into goal attempts. But it's risky to dismiss a season's statistics as coincidence. They offer strong evidence to support the theory that, to compete at the highest level, teams need to be equipped and organised to exert sustained high pressing – and to cope with it when confronted by opponents with similar qualities.

Apart from the two finalists' intense collective high pressing, UEFA's technical observers noted diversity among the other top teams in terms of methods and frequencies of pressing in high areas. After watching Bayern München's home leg against Paris Saint-Germain, Monika Staab remarked that Jens Scheuer's team preferred to set up a high block when their opponents had a goal kick or a throw-in in their defensive third, whereas in open play, their tendency was to defend in a midfield block, giving themselves space for a fast counterattack if possession was won.

Paris, on the other hand, liked to press hard and high in open play, but generally opted for a mid-block in dead-ball scenarios. Pauw, who saw the home leg of their semi-final against Lyon, commented, "PSG set out to disturb the Lyon build-up high up the pitch but often on a more individual basis, with major gaps behind the first line of defence resulting in control for Lyon and more danger from their immediate transitions to attack."

EXAMPLES OF THE PRESS



Bayern block the passing lanes and force Paris to go long



Stina Blackstenius leading the Arsenal press, forcing Wolfsburg to play long



Wolfsburg build up against Arsenal's high press to beat their pressing lines



Lyon pressing collectively and forcing the opposition to one side

ANALYSIS

Didier Ollé-Nicolle remedied this by sending on Ramona Bachmann to accompany Sara Däbritz in the engine-room and, as Pauw said, "When PSG lost the ball, covering players could react immediately. Possession wasn't lost immediately; teamwork improved and took the sting out of Lyon's counterattacking."

After seeing Arsenal at home to Wolfsburg, Hope Powell reported, "They pressed high and aggressively in a 1-4-4-2 formation when they could, with Stina Blackstenius leading the press from the front. But when Wolfsburg had comfortable possession, they would focus on recovering shape and balance by retreating to the edge of the mid-third."

"Real Madrid set up a deep defensive block," said Pauw after watching their home game against Barcelona. "From this block, they would press forward on the player in possession, focusing on a little mistake or inaccurate execution to attack the ball and win it back. This usually happened in midfield."

Wolfsburg, more of a transition team, were less assiduous in the use of high pressing except, as Jorge Vilda witnessed, at the semi-final first leg in Barcelona. "Wolfsburg set out to press Barcelona with a very high back line but marking 1v1 on their opponents. As a result, they risked being pulled out of shape – and they were 2-0 down within nine minutes."

Juventus generally opted for deeper defending. After watching them in Lyon, Matikainen commented, "They tried to press early and put pressure on the centre-backs when they wanted to play out. So the front four were important in the defensive structure as the first line of defence. They held a high line at first but were forced to drop deeper – mainly a compact block in midfield but frequently even deeper. And the wide players had the task of defending against Lyon's attacking full-backs and needed to cover a lot of ground. So they often had to look for the front four with a long pass." Still with Lyon, heat maps from the final demonstrate that the team's average positions on the pitch were higher when out of possession than when the champions had the ball.

Amid the diversity in terms of the how, when and where of pressing mechanisms, Chelsea, eliminated in the group stage, emerged as the team who, as the graphic illustrates, allowed opponents the lowest number of passes (passes per defensive action) before winning the ball back from them.

PASSES PER DEFENSIVE ACTION



"CHELSEA ALLOWED OPPONENTS THE FEWEST PASSES PER DEFENSIVE ACTION BEFORE WINNING THE BALL BACK"

Wolfsburg's Shanice van de Sanden keeps a close eye on Chelsea winger Guro Reiten

RECOVERIES

CONVERTING REGAINS INTO SHOTS ON GOAL

Two years previously, Corinne Diacre had sparked debate by stating that, after high pressing had earned regains, "Possession was often given away again by hurried or inaccurate passing. There is a temptation to regard high regains as the objective. But, really, the important thing is what we do with the ball after we have won it high up the pitch. Do we use it to retain possession and rebuild an attack? Or do we use it for an immediate vertical counterattack?" In 2022, the two finalists delivered a clear answer by converting, as the table shows, a fair proportion of their regains in the attacking third into shots at goal.

BALL RECOVERIES IN ATTACKING THIRD THAT LED TO A GOAL



Hoffenheim's Nicole Billa challenges Barcelona's Mapi León

THE DIRECT ROUTE

IS PLAYING OUT FROM THE BACK "A TREND OR A FIXATION"?

Successes from high pressing inevitably raised questions about criteria for playing patiently out from the back. "Are teams being stubborn about insisting on playing short to build up from the goalkeeper?" Anna Signeul asked. "It's become fashionable to play out from the back," Hope Powell agreed, "but is it a trend or a fixation?"

The season certainly provided examples of costly insistence on building from the back: Chelsea conceding a second goal in the 3-3 home draw with Wolfsburg; Servette offering a 1-0 advantage to the same opponents; Benfica gifting a second to the champions in Lyon; and Häcken doing the same to put Lyon 3-0 ahead. On the other hand, teams were able to successfully build from the back. Signeul, watching the second leg of the Wolfsburg v Arsenal quarter-final, highlighted the home team's ability to "attack with variation – building up from the goalkeeper with short passes, but often with few touches and at high tempo. But they were a transition team and if they could find a long pass behind the opponents' back line, they would play it." However, Arsenal "tried to play from the back and keep the ball. But they struggled to find options as Wolfsburg were pressing so hard with close marking on each player."

Real Madrid were one of the top eight who set out to play through the thirds with, as Nils Nielsen observed, "The centre-backs, the goalkeeper and the left-sided holding midfielder building up from the back. But, in Barcelona, they were forced to go deep on the sides and use their striker as target." In that match, he added, "The Barça keeper didn't have much to do but found open players in build-up throughout the game. She and the left centre-back initiated most of the build-up. Mapi León animated her team the whole game, constantly talking, winning every duel and making great forward passes. It was the best performance from a left centre-back that I had seen in years."

SURVIVAL OF THE FITTEST

THERE WAS A MARKED INCREASE IN HIGH-INTENSITY RUNNING

Athletic conditioning is evidently an influential factor if teams are to sustain a high pressing strategy – and the Women's Champions League continues to set the benchmarks. UEFA recently published an analysis of matchplay demands in the previous two seasons and this research is now being updated with data from the 2021/22 season. With regard to individual parameters, studies of the FIFA Women's World Cups in 2015 and 2019 revealed that, from one final tournament to the other, the amount of high-intensity running increased by 15% and 29% respectively. In the Women's Champions League, the study revealed a similar upward trend with, for instance, a 10% rise in high-intensity running in a single season between 2020 and 2021, with sprinting at speeds over 23km/h while out of possession rose by a significant 30%.

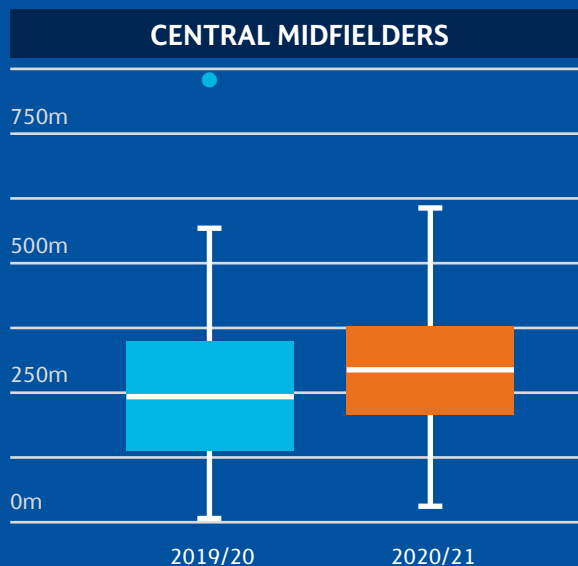
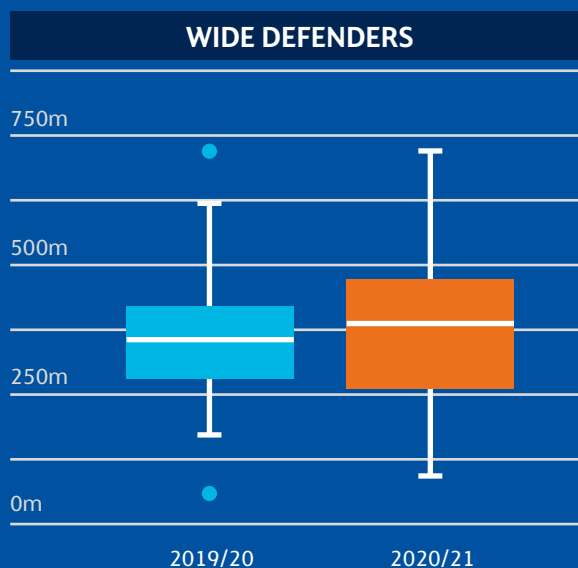
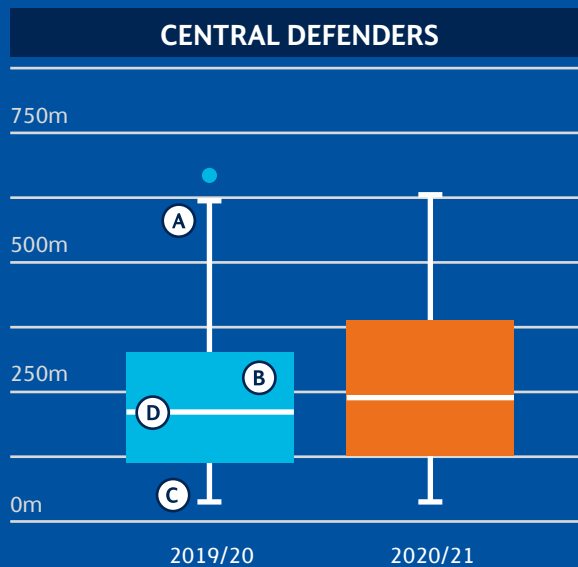
The research also indicated that, on average, wide players need to be ready to deliver 17 sprints at a mean speed of 28.4km/h. In the knockout rounds of the 2021/22 season, wide midfielders accounted for six of the dozen players who produced sprints in excess of 30km/h, alongside Lyon right-back Ellie Carpenter. Although her peak speed fell short of 30km/h (29.85km/h to be precise) Wolfsburg's Tabea Wassmuth delivered 3.168km at speeds between 15 and 30km/h during her team's home game against Arsenal.

The UEFA analysis also demonstrated that centre-backs are required to produce high speeds when the team is out of possession – with Arsenal's Leah Williamson and Lyon's Kadeisha Buchanan illustrating this by topping the 30km/h mark. Central midfielders, the data confirmed, generally cover a lot of ground (Barcelona's Aitana Bonmatí ran 12.1km during the final, for example) but rarely find enough space to work up to maximum pace. A notable exceptional to this rule was provided by Paris's holding midfielder Laurina Fazer who, in the away leg of the semi-final against Lyon, recorded 32.34km/h – second only in the season's ranking to Wolfsburg's wide midfielder Sveindis Jónsdóttir's run at 32.87km/h during the 5-1 defeat in Barcelona.

In terms of collective effort in distance covered, the curiosity is that the champions posted the lowest figure of the knockout rounds; 103.74km in their away match against Juventus compared with an overall average of just over 110km per game. The codicil is that Lyon also registered modest statistics in real playing time: 50-52 minutes in three of their four fixtures during the run into the final (the exception being 59'19 in the home leg against Paris). The ball was out of play for 45 of the 101 minutes played during the final, where Barcelona, chasing the game almost from start to finish, collectively ran 5km more than their opponents to post the second-highest total behind Bayern München's 117.58km in the home match against Paris.

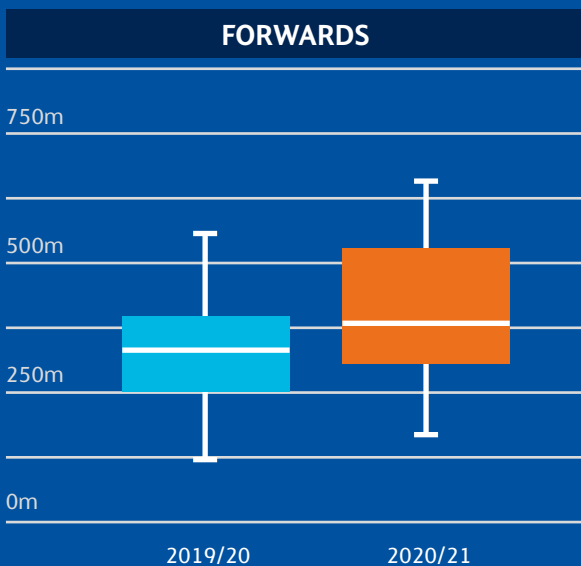
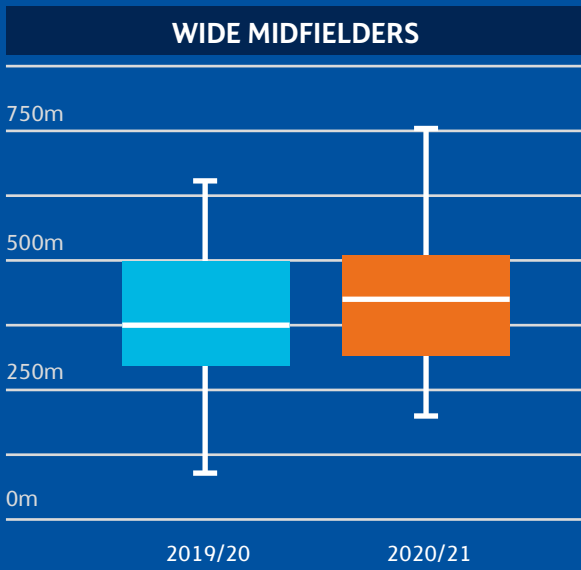
DISTANCE COVERED AT HIGH INTENSITY

(High intensity is greater than 19km/h)





TOP SPEEDS



These box plots are used to show the spread of the whole data set for the range of maximum speeds across various playing positions. In these graphs, the horizontal middle line represents the median (the middle data point), the box depicts the middle 50% of data and the vertical lines show the most extreme quartiles (the highest and lowest 25%)

- A** Highest 25% of data points
- B** Middle 50% of data points
- C** Lowest 25% of data points
- D** Median data point

	MATCH	KM/H
Sveindis Jónsdóttir	Barcelona v Wolfsburg	32.87
Laurina Fazer	Lyon v Paris	32.34
Asisat Oshoala	Barcelona v Lyon	31.53
Delphine Cascarino	Juventus v Lyon	31.38
Delphine Cascarino	Paris v Lyon	30.92
Delphine Cascarino	Barcelona v Lyon	30.82
Ewa Pajor	Wolfsburg v Barcelona	30.68
Sveindis Jónsdóttir	Wolfsburg v Arsenal	30.54
Leah Williamson	Wolfsburg v Arsenal	30.47
Ellie Carpenter	Lyon v Paris	30.36
Kadeisha Buchanan	Juventus v Lyon	30.23
Klara Bühl	Bayern v Paris	30.22
Kadidiatou Diani	Lyon v Paris	30.20
Leila Ouahabi	Wolfsburg v Barcelona	30.13
Caroline Graham Hansen	Barcelona v Real Madrid	30.07
Ellie Carpenter	Paris v Lyon	30.06



POSSESSION PLAY

KEEPING HOLD OF THE BALL WAS NOT ALWAYS THE PRIORITY

Some teams were confronted by steep learning curves during a group stage where both teams scored in ten of the 48 fixtures. Ball-possession statistics help to gauge difficulties. Denmark's HB Køge, for example, averaged 24% in their group alongside Arsenal, Barcelona and Hoffenheim; Iceland's Breidablik 32% against WFC Kharkiv, Paris and Real Madrid; Servette 36% in their group alongside Chelsea, Juventus and Wolfsburg.

Averages, however, can be precarious evidence. Arsenal's figure of 53% conceals shares of 80% and 76% against HB Køge, contrasting with 36% and 28% against Barcelona, whose share of the ball, in their 11 matches, never fell below 60%.

As an indicator of contrasting styles, their opponents in the final were not overly concerned about dominating possession. Against Bayern in the group stage, Lyon had 49% and 44% of the ball; then 48% and 38% in the semi-final against Paris; and 39% in the final. Their use of the long pass stepped up in relation to previous seasons, reaching 20%

during the away leg against Paris and the final in Turin.

Long passing fell into two categories: systematic and enforced. HB Køge (26%) and Breidablik (22%) fell into the former, with more than one-third of the Danish team's passes against Barcelona covering distances in excess of 32m. Chelsea, on the other hand, were persuaded to stray from their habitual modus operandi when they travelled to Wolfsburg in the group stage. Whereas their percentage of long passing had fallen a few decimal points short of double figures in the other five group games, 21% of the 2020/21 silver medallists' passing was long during the critical game in Germany; the number of passes fell from well over 500 to 340; and the pass completion rate dropped to 62% overall and 56% in the Wolfsburg half. The 4-0 defeat spelt elimination. Tommy Stroot's She-Wolves adopted a similar approach to the away leg of their semi-final against Barcelona, holding a high line, pressing the ball hard and marking individually. The home team, however, remained unfazed and maintained their season-long 6% quota of long passing.

LONG BALL PERCENTAGE





Ada Hegerberg leaps over Barça keeper Sandra Paños during the final

STRIKING GOLD

THE IMPORTANCE AND ROLE OF THE CENTRAL ATTACKER

"The experienced centre-forward Ada Hegerberg was pivotal in attack holding the ball well, combining with the wingers or attacking the box to connect with the final pass." Matikainen's appraisal of the Lyon striker's contribution against Juventus was echoed in the semi-finals and final, where she scored crucial goals. "When Barcelona were pressing hard," Pauw commented in Turin, "and the risk of losing the ball was high, Lyon used the long ball to get out of the pressure, mostly using Hegerberg as the target player."

The final fuelled debate about the importance (and the job description) of the central attacker. Barcelona's Jennifer Hermoso illustrated a different genre, dropping deep to lure centre-backs out of position – as she demonstrated during the first leg of the semi-final against Wolfsburg – clearing pathways for midfielders (especially the competition's leading scorer Alexia Putellas) and ghosting into scoring positions from twilight areas between lines. In the second half, Barça's attacking took on a different complexion with the introduction of Asisat Oshoala, whose game is more about physical presence,

athleticism and blistering pace – qualities that could equally well be applied to Paris's Marie-Antoinette Katoto.

In the meantime, teams prepared to play on the back foot usually relied on a hard-working target striker as an outlet in transition play – for instance Juventus' Cristiana Girelli who, as Vilda said, "plays well with her back to goal and is very strong in the air." Or Real Madrid's Esther González who Pauw described as "tenacious, fast and direct. She knows how to make herself free in front of goal or in build-up play. She uses the spaces behind the defence and is also the target player, winning almost every ball and giving the team structure when under pressure."

Arsenal's mid-season signing of Swedish striker Stina Blackstenius (after playing the group stage for Häcken) signified a change of style, allowing Vivianne Miedema to operate in a much more Hermoso-like role. "Playing styles and game plans depend a lot on the personality of the striker," Nielsen commented. "A lot of the top teams looked for direct attacking through the middle if possible and, if not, they would focus on a wing-play and crossing approach."

WING MIRRORS

FULL-BACKS AND WINGERS DEVELOPED PROSPEROUS RELATIONSHIPS IN THE ABSENCE OF WING-BACKS

The starting point for reflections on wing play was the remark in the previous season's technical report that full-backs had been less exuberant than in previous seasons and had mostly supported attacking play from behind the ball rather than ahead of it. In the 2021/22 season, the wing-back was a rare sighting, as none of the top eight teams operated with three centre-backs as a default setting. The two French semi-finalists featured excellent wing-play relationships between full-backs and wingers: Lyon with Ellie Carpenter and Delphine Cascarino on the right, Selma Bacha and Melvine Malard on the left; Paris with Amy Lawrence and Kadidiatou Diani on the right; Sakina Karchaoui and Sandy Baltimore on the left. All but three of the players who delivered sprint speeds in excess of 30km/h were full-backs or wingers.

Barcelona's full-backs Marta Torrejón and Fridolina Rolfö (converted from winger to left-back as from the quarter-final against Real Madrid) were among those who delivered underlapping runs – and both appeared on scoresheets. Yet the modus operandi differs. Rolfö's upfield running tends to be high and wide into spaces created by infield moves by team-mates such as Lieke Martens, Ana-Maria Crnogorčević or Claudia Pina, who like to attack the opposition's back line from more central areas. Right-back Torrejón, on the other hand, has the knack of arriving in central, potentially scoring, positions while Caroline Graham Hansen stays wide.

For Lyon, left-back Bacha generally stays wide, arriving in second-phase attacking to deliver high-quality crosses/assists from tight situations near the by-line (as she did in the final) or from deeper positions (as she did in the semi against Paris). On the right, Carpenter is generally more conservative with her attacking contributions, providing second-phase overlaps when Lyon make quick switches of play.

While this successful quartet illustrated different tactical concepts of the attacking full-back, other teams in the top eight displayed colours from the other end of the spectrum. For example, while Real Madrid left-winger Olga Carmona caught the eye, the full-backs played more conservative supporting roles; and the same could be said of the Juventus full-backs, who tended to remain behind the ball to cover two fast, skilful wingers. "I think it is safe to say," Matikainen commented "that full-backs are steadily becoming better in terms of aerobic qualities, technique and strength."

Bayern München's full-backs Hannah Glas and Giulia Gwinn slotted into the more adventurous category with the latter, on the left, "fast, very much involved in attacking action and determined to look for finishing opportunities", as Staab reported, while Klara Bühl, able to perform on either flank, was a prolific provider of crosses. A season earlier, Signeuil had commented in the technical report, "I think centre-backs and goalkeepers are well equipped these days to deal with the traditional high cross, so it is becoming more and more difficult to score from them." Statistics from the 2021/22 season reveal that one-third of open-play goals stemmed from crosses or cut-backs. The debating point is whether this can be considered a reasonable dividend on the 1,789 deliveries from wide areas listed in the table.

CROSSES PER GAME

	CROSSES	AVERAGE PER GAME	GOALS
Barcelona	271	24.6	6
Chelsea	137	22.8	2
Bayern	164	20.5	3
Paris	203	20.3	7
Lyon	213	19.4	11
Real Madrid	116	14.5	3
Wolfsburg	138	13.8	3
Arsenal	99	12.4	2
Hoffenheim	68	11.3	2
SL Benfica	59	9.8	-
Breidablik	59	9.8	-
Juventus	78	9.7	2
Häcken	52	8.7	-
WFC Kharkiv	52	8.7	1
Servette	45	7.5	-
HB Køge	35	5.8	-

There are codicils. Barcelona's goal tally could be increased by four if cut-backs (notably by Caroline Graham Hansen) are included; two to Lyon's and Arsenal's; and one apiece for Chelsea, Paris and Wolfsburg. Plus the own goals turned into the net as a result of crosses or cut-backs: two for Wolfsburg; one apiece for Juventus, Lyon and Paris.



The differing role of full-backs in possession in the attacking phase



FINISHING TOUCH

PARIS AND LYON NEEDED THE FEWEST CHANCES PER GOAL

The two French clubs emerged as the most efficient in converting chances into goals, needing less than six attempts to ruffle the net, whereas Barcelona, who had needed 5.5 when they lifted the trophy the previous season, needed 7.84 attempts to score during the 2021/22 season. Once again, the accuracy of finishing provided food for thought, with Arsenal alone in nudging the 50%-mark in terms of hitting the target.

GOAL ATTEMPTS

	ATTEMPTS	ON TARGET	% ON TARGET	ATTEMPTS PER GOAL
Paris	175	85	49%	5.5
Lyon	184	76	42%	5.9
Juventus	90	34	33%	6
Hoffenheim	72	29	40%	6.6
Bayern	125	40	33%	7
Wolfsburg	167	65	39%	7.3
Arsenal	109	54	50%	7.3
Real Madrid	111	47	42%	7.5
Barcelona	298	119	38%	7.8
Chelsea	113	38	34%	8.7
HB Køge	31	13	42%	15.5
Häcken	55	17	31%	18.3
WFC Kharkiv	40	16	40%	20
SL Benfica	48	18	38%	24
Breidablik	44	13	30%	–
Servette	38	9	23%	–

COUNTERING THE COUNTER

SUCCESSFUL BACK-TO-FRONT COUNTERATTACKS WERE A RARE SIGHT

The technical report on 2020/21 had indicated that “the trend towards high defensive lines meant that classic counterattacks from deep positions became a rarer commodity” – and this tendency was extended into the 2021/22 season. Although 19 goals could be attributed to counterattacks, the vast majority were the result of regains in midfield or advanced areas, rather than back-to-front breaks, such as WFC Kharkiv’s opening goal in Iceland, when the keeper launched a counter culminated by a low cross from the right to the far post.

The semi-final between Lyon and Paris epitomised the measures taken by teams to counter the opposition’s counterattacking play. “The Paris full-backs, Lawrence and Karchaoui,” Pauw noted, “had enough pace to stop many of Lyon’s attempts to counter on the wings. And when Paris tried to exploit their high-pace defence-to-attack transitions, the covering organisation of Lyon prevented most of the attempts to counterattack, with the dynamic full-backs Carpenter and Bacha tracking back quickly, covered by centre-backs and midfielders. So the break was often stopped early.” “Defensive transitions have improved,” Matikainen added, “and, although teams are ready to hit ‘fast forward’ after regains, they find it difficult to break through.”

“The half-time substitution was important,” Matikainen reflected after watching Lyon entertain Juventus in the second leg of the quarter-final. “Lyon had issues during the first half-hour, sometimes losing possession and lacking balance. Sending on Amandine Henry was the key. She steadied the ship and controlled the central area well during the second half.”

“Ramona Bachmann was sent on for extra-time,” Diacre noted as Paris’s quarter-final against Bayern München became the only tie to require an extra half-hour. “With her on the field, the system switched to 1-4-4-2. She added a lot of defensive energy and she pushed up to score the goal that qualified her team.”

“Paris made a change at half-time,” said Pauw, observer at their home leg against Lyon, “with Bachmann becoming the creative attacking midfielder. She immediately provided the connection that had been missing in the first half, became their best player, and, with two controlling midfielders supporting her, Lyon’s counterattacks were stopped.”

Pauw had also witnessed a key half-time change when Real Madrid entertained Barcelona in the capital. “Rolfö dropped to full-back and Clàudia Pina came on as an extra left-sided attacking midfielder ahead of her. Pina pulled the defender inside and Rolfö pushed up to exploit the space. The result as a different second half that Barcelona dominated until the final whistle. Well done to coach Giráldez.”

The random comments pay tribute to the quality of coaching during a tactically fascinating season when teams were able to change their strategy in response to the challenging scenarios that await them in the new-look Women’s Champions League.

TEAM OF THE SEASON

BARCELONA'S ALEXIA PUTELLAS WAS CHOSEN AS THE PLAYER OF THE SEASON, BUT LYON PROVIDED THE LION'S SHARE OF THE ALL-STAR XI

For the first time, the technical observers were confronted by the daunting task of selecting a team of 11 players, position by position, instead of the previous challenges of selecting squads of 18 or, as in the previous season, 23.

Based on observations starting at the quarter-final stage, 46 candidates originally emerged and, by the time the technical observers met in Turin on the day after the final, the list had been reduced to 16. Inevitably, some outstanding performers went unrewarded, among them Barcelona winger Caroline Graham Hansen, the Paris Saint-Germain duo of midfielder Sara Däbritz and left-back Sakina Karchaoui or the Wolfsburg goalkeeper Almuth Schult.

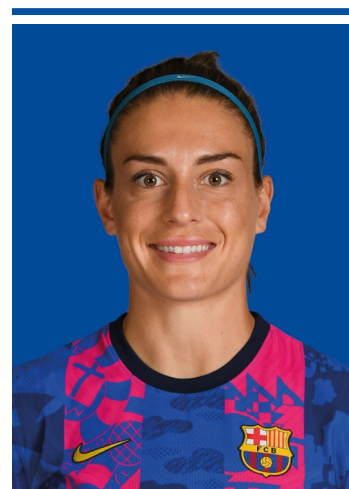
Barcelona's Alexia Putellas, who headed the scoring charts with 11 goals, was selected as Player of the Season while the Young Player of the Season award went to the champions' left-back Selma Bacha, the supplier of nine assists during Olympique Lyonnais' run to the title. One of the talking points to emerge from the selection process was that, in contrast to previous seasons, there was a scarcity of full-backs on the list of candidates for the 2021/22 All-Star XI.



	CHRISTIANE ENDLER
GK	LYON



	SELMA BACHA
DEF	LYON



	ALEXIA PUTELLAS
MID	BARCELONA



 **GRIEDGE MBOCK BATHY**
DEF LYON



 **WENDIE RENARD**
DEF LYON



 **MAPI LEÓN**
DEF BARCELONA



 **AITANA BONMATÍ**
MID BARCELONA



 **PATRI GUIJARRO**
MID BARCELONA



 **AMANDINE HENRY**
MID LYON



 **ADA HEGERBERG**
FOR LYON



 **MARIE-ANTOINETTE KATOTO**
FOR BARCELONA

“FOR THE FIRST TIME, THE TECHNICAL OBSERVERS WERE CONFRONTED BY THE DAUNTING TASK OF SELECTING A TEAM OF 11 PLAYERS, POSITION BY POSITION”



Amandine Henry winds up then fires a bullet (below right) to put Lyon ahead in the final

GOALS OF THE SEASON

AMANDINE HENRY'S LONG-RANGE STUNNER IN THE FINAL WAS THE PICK OF AN IMPRESSIVE BUNCH

TOP TEN GOALS

1

AMANDINE HENRY

BARCELONA 1-3 LYON
21 May 2022, final

2

ADA HEGERBERG

PARIS SAINT-GERMAIN 1-2 LYON
30 April 2022, semi-final second leg

3

STEPH CATLEY

HB KØGE 1-5 ARSENAL
10 November 2021, group stage Matchday 3

4

CAROLINE GRAHAM HANSEN

BARCELONA 5-1 WOLFSBURG
22 April 2022, semi-final first leg

5

ARIANNA CARUSO

SERVETTE 0-3 JUVENTUS
6 October 2021, group stage Matchday 1

6

SAM KERR

CHELSEA 3-3 WOLFSBURG
6 October 2021, group stage Matchday 1

7

FRIDOLINA ROLFÖ

ARSENAL 0-4 BARCELONA
9 December 2021, group stage Matchday 5

8

JENNIFER HERMOSO

BARCELONA 5-1 WOLFSBURG
2 April 2022, semi-final first leg

9

ALEXIA PUTELLAS

BARCELONA 4-0 HOFFENHEIM
10 November 2021, group stage Matchday 3

10

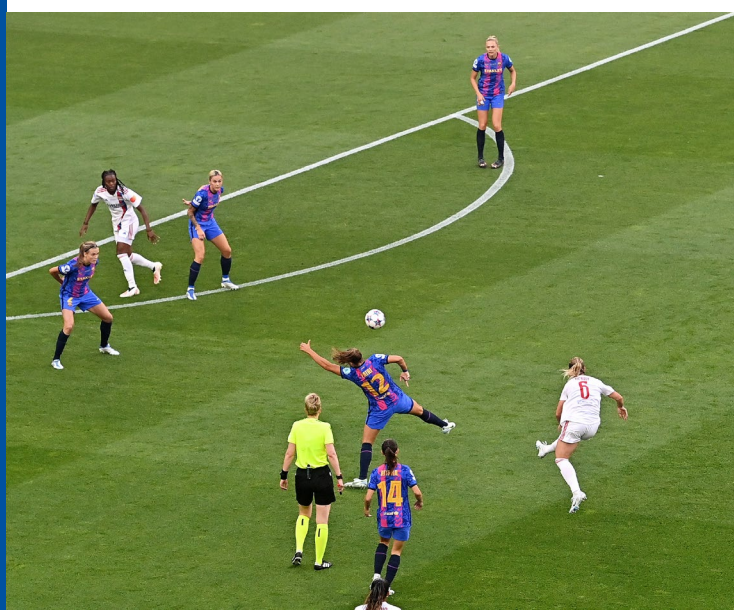
KLARA BÜHL

BAYERN MÜNCHEN 1-2 PARIS SAINT-GERMAIN
22 March 2022, quarter-final first leg

The long-range shot from Lyon midfielder Amandine Henry in Turin took top spot, not only on account of the power and accuracy of the right-footed strike, but also the impact it had as the ice-breaking opening goal in the final.

The champions also earned second place with Ada Hegerberg's technically brilliant header from Selma Bacha's cross during the second leg of the semi-final in Paris. That duo also produced the second goal in the final for Lyon.

The top ten also featured three brilliant left-footed direct free-kicks by Arsenal full-back Steph Catley, Barcelona's Alexia Putellas and Bayern München's Klara Bühl; technically outstanding finishes by Chelsea's Sam Kerr and Juventus midfielder Arianna Caruso to open the scoring against Servette in Geneva; a superb solo run by Barcelona winger Caroline Graham Hansen to round off a neat passing move during the first leg of the semi-final against Wolfsburg; and a nice cut-back which allowed Jennifer Hermoso to cleverly clip in her side's third goal in the same match. Wolfsburg fans will not be amused that three of the season's top ten goals were scored against their team...



RESULTS AND PLAYER OF THE MATCH

Finalists Caroline Graham Hansen, Ada Hegerberg and Alexia Putellas were among the five players to win three Player of the Match Awards

GROUP A	P	W	D	L	F	A	Pts
VfL Wolfsburg	6	3	2	1	17	7	11
Juventus	6	3	2	1	12	4	11
Chelsea FC	6	3	2	1	13	8	11
Servette FCCF	6	0	0	6	0	23	0

6/10	Servette	0-3	Juventus	Arianna Caruso (Juventus)
6/10	Chelsea	3-3	Wolfsburg	Tabea Wassmuth (Wolfsburg)
13/10	Wolfsburg	5-0	Servette	Tabea Wassmuth (Wolfsburg)
13/10	Juventus	1-2	Chelsea	Pernille Harder (Chelsea)
9/11	Servette	0-7	Chelsea	Sam Kerr (Chelsea)
9/11	Juventus	2-2	Wolfsburg	Cristiana Girelli (Juventus)
18/11	Wolfsburg	0-2	Juventus	Barbara Bonansea (Juventus)
18/11	Chelsea	1-0	Servette	Sam Kerr (Chelsea)
8/12	Servette	0-3	Wolfsburg	Jill Roord (Wolfsburg)
8/12	Chelsea	0-0	Juventus	Pauline Peyraud-Magnin (Juventus)
16/12	Wolfsburg	4-0	Chelsea	Svenja Huth (Wolfsburg)
16/12	Juventus	4-0	Servette	Lina Hurtig (Juventus)

GROUP B	P	W	D	L	F	A	Pts
Paris Saint-Germain	6	6	0	0	25	0	18
Real Madrid CF	6	4	0	2	12	6	12
WFC Kharkiv	6	1	1	4	2	15	4
Breidablik	6	0	1	5	0	18	1

6/10	WFC Kharkiv	0-1	Real Madrid	Lorena Navarro (Real Madrid)
6/10	Breidablik	0-2	Paris	Grace Geyoro (Paris)
13/10	Paris	5-0	WFC Kharkiv	Jordyn Huitema (Paris)
13/10	Real Madrid	5-0	Breidablik	Caroline Moller (Real Madrid)
9/11	WFC Kharkiv	0-0	Breidablik	Olha Ovdychuk (WFC Kharkiv)
9/11	Paris	4-0	Real Madrid	Marie-Antoinette Katoto (Paris)
18/11	Breidablik	0-2	WFC Kharkiv	Olha Ovdychuk (WFC Kharkiv)
18/11	Real Madrid	0-2	Paris	Sakina Karchaoui (Paris)
8/12	WFC Kharkiv	0-6	Paris	Ramona Bachmann (Paris)
8/12	Breidablik	0-3	Real Madrid	Kosovare Asllani (Real Madrid)
16/12	Paris	6-0	Breidablik	Ramona Bachmann (Paris)
16/12	Real Madrid	3-0	WFC Kharkiv	Maite Oroz (Real Madrid)

PLAYER OF THE MATCH AWARD LEADERS



3

Ramona Bachmann
(Paris)

Caroline Graham Hansen
(Barcelona)

Ada Hegerberg
(Lyon)

Alexia Putellas
(Barcelona)

Tabea Wassmuth
(Wolfsburg)

QUARTER-FINALS

22–31 March

Bayern 3-4 Paris
 First leg 1-2 Marie-Antoinette Katoto (Paris)
 Second leg 2-2 (aet) Ramona Bachmann (Paris)

Juventus 3-4 Lyon
 First leg 2-1 Agnese Bonfantini (Juventus)
 Second leg 1-3 Ada Hegerberg (Lyon)

Arsenal 1-3 Wolfsburg
 First leg 1-1 Tabea Wassmuth (Wolfsburg)
 Second leg 0-2 Kathrin Hendrich (Wolfsburg)

Real Madrid 3-8 Barcelona
 First leg 1-3 Caroline Graham Hansen (Barcelona)
 Second leg 2-5 Caroline Graham Hansen (Barcelona)

GROUP C	P	W	D	L	F	A	Pts
FC Barcelona	6	6	0	0	24	1	18
Arsenal WFC	6	3	0	3	14	13	9
TSG 1899 Hoffenheim	6	3	0	3	11	15	9
HB Køge	6	0	0	6	2	22	0

5/10	Hoffenheim	5-0	HB Køge	Katharina Naschenweng (Hoffenheim)
5/10	Barcelona	4-1	Arsenal	Mariona Caldentey (Barcelona)
14/10	HB Køge	0-2	Barcelona	Caroline Graham Hansen (Barcelona)
14/10	Arsenal	4-0	Hoffenheim	Tobin Heath (Arsenal)
10/11	HB Køge	1-5	Arsenal	Steph Catley (Arsenal)
10/11	Barcelona	4-0	Hoffenheim	Alexia Putellas (Barcelona)
17/11	Hoffenheim	0-5	Barcelona	Fridolina Rolfö (Barcelona)
17/11	Arsenal	3-0	HB Køge	Lotte Wubben-Moy (Arsenal)
9/12	HB Køge	1-2	Hoffenheim	Nicole Billa (Hoffenheim)
9/12	Arsenal	0-4	Barcelona	Fridolina Rolfö (Barcelona)
15/12	Hoffenheim	4-1	Arsenal	Jule Brand (Hoffenheim)
15/12	Barcelona	5-0	HB Køge	Alexia Putellas (Barcelona)

GROUP D	P	W	D	L	F	A	Pts
Olympique Lyonnais	6	5	0	1	19	2	15
FC Bayern München	6	4	1	1	15	3	13
SL Benfica	6	1	1	4	2	16	4
BK Häcken	6	1	0	5	3	18	3

5/10	Häcken	0-3	Lyon	Melvine Malard (Lyon)
5/10	SL Benfica	0-0	Bayern	Lúcia Alves (Benfica)
14/10	Bayern	4-0	Häcken	Linda Dallmann (Bayern)
14/10	Lyon	5-0	SL Benfica	Selma Bacha (Lyon)
10/11	Lyon	2-1	Bayern	Amandine Henry (Lyon)
10/11	SL Benfica	0-1	Häcken	Elin Rubensson (Häcken)
17/11	Häcken	1-2	SL Benfica	Catarina Amado (Benfica)
17/11	Bayern	1-0	Lyon	Saki Kumagai (Bayern)
9/12	Häcken	1-5	Bayern	Jovana Damnjanović (Bayern)
9/12	SL Benfica	0-5	Lyon	Ada Hegerberg (Lyon)
15/12	Lyon	4-0	Häcken	Ada Hegerberg (Lyon)
15/12	Bayern	4-0	SL Benfica	Klara Bühl (Bayern)

SEMI-FINALS

22–30 April

Barcelona	5-3	Wolfsburg
First leg 5-1 Alexia Putellas (Barcelona)		Second leg 0-2 Aitana Bonmatí (Barcelona)

Lyon	5-3	Paris
First leg 3-2 Catarina Macario (Lyon)		Second leg 2-1 Christiane Endler (Lyon)

Aggregate scores played over two legs; the first-named club played at home in the first leg

FINAL

21 May



FC Barcelona	1-3	Olympique Lyonnais
		Amandine Henry (Lyon)

TORINO 22

FINAL

GOALSCORING

THE NEW-LOOK COMPETITION DELIVERED PLENTY OF GOALS, WITH BALLS INTO THE BOX FROM OUT WIDE PROVING A PARTICULARLY PRODUCTIVE FORM OF ATTACK

The new-look competition offered spectators 220 goals at 3.61 per game – an average 65% higher than national-team football at UEFA Women's EURO 2017 had delivered. Statistics pre-empt any temptation to allege that the injection of the 16-team group phase into the UEFA Women's Champions League would inflate scoring rates. The 48 group fixtures delivered an average of 3.56 goals, whereas the mean figure during the knockout rounds involving the top eight clubs produced a higher average of 3.77 per match.

OPEN-PLAY GOALS

CROSSES AND THROUGH PASSES PAY OFF

As mentioned elsewhere in this report, wing play in the form of crosses or cut-backs created one third (34% to be precise) of the season's open-play goals, with Barcelona especially active in the wide areas, delivering crosses at an average of just a few decimal points below 25 per game. "Barcelona attacked mostly down the sides," Nils Nielsen commented after watching their home game against Real Madrid, "with a good variety of early crosses or getting to the byline and providing cut-backs and chips to the far post." Observers also noted that practising the latter formed part of Caroline Graham Hansen's warm-up procedures.

The through pass was the second best route to goal, although its effectiveness faded at the top end of the competition to leave it only marginally ahead of long-range shooting in the final balance. Apart from the Amandine Henry goal that broke the ice in the final, there were enough spectacularly successful goals from outside the box to provoke questions about the amounts of training-ground time dedicated to this speciality.

The other salient feature is that so few goals were clearly attributable to combination moves, in stark contrast to the men's equivalent competition where this category generally supplies 20% or more of open-play goals. In the Women's Champions League, the percentage was halved.

Curiously, this interlocks with the champions' scoring patterns. Ten of Lyon's 31 goals were derived from set plays (11 if the own goal from a corner is included); 11 from crosses; two from cut-backs; one from a long ball; one from a through pass; and five from capitalising on defensive errors. None from combination play through the middle.

OPEN-PLAY GOALS

	GROUP STAGE	KNOCKOUT STAGE	TOTAL
Combinations	12	5	17
Crosses	32	10	42
Cut-backs	12	1	13
Through passes	20	5	25
Long balls	5	1	6
Individual action	11	2	13
Shots from outside box	18	6	24
Defensive errors	12	3	15
Own goals	6	1	7
TOTAL	128	34	162



Jill Roord scores Wolfsburg's goal in the semi-final first leg at Barcelona



Alexia Putellas hits the net for Barça against Wolfsburg

SET-PLAY GOALS

CORNERS PROVE EFFECTIVE ROUTE TO GOAL

Dead-ball situations accounted for 26.36% of the season's goals and ten of Lyon's 31 goals en route to the title – 11 if Håcken's own goal from a corner is included. Corner kicks accounted for 38% of set-play goals, with a tally of 22 signifying a healthy success rate of 1:28, especially in comparison with EURO 2017 where the ratio had been a discouraging 1:76. Having said that, the Women's Champions League figure for 2021/22 was very much in line with EURO 2013's tariff of 1:29.

With penalties accounting for 31% of the dead-ball goals, indirect free-kicks took the bronze-medal spot in the set-play ranking with the 15 successes ranging from 'scruffy' rebounds or melees to crisp one-touch strikes or the clever, lofted, quickly-taken free-kick which sent Aitana Bonmatí clear to put Barcelona 1-0 ahead in the opening minutes of the semi-final first leg against Wolfsburg.

In 61 matches, only three goals were scored from direct free-kicks, with Steph Catley's strike for Arsenal against HB Køge, Alexia Putellas' goal against Hoffenheim and Klara Bühl's success for Bayern München in the home leg of the quarter-final against Paris Saint-Germain all earning places among the season's Top Ten Goals. All were delivered by a left boot.

The observers noted a strong emphasis on change-footed, inswinging deliveries of set plays, with no fewer than 19 goals stemming from left-footed deliveries from the right (as opposed to just five right-footed deliveries from the left).

Goals directly attributable to a throw-in remained a rarity – although the zero against that category in the table conceals a couple of approximate successes: Lyon's opening goal away to Håcken when a throw on the right was poorly cleared; or the quickly-taken throw-in leading to the penalty that put Bayern 3-0 up against Benfica.

SET-PLAY GOALS

	GROUP STAGE	KNOCKOUT STAGE	TOTAL
Following a corner	18	4	22
Direct free-kicks	2	1	3
Indirect free-kicks	10	5	15
Throw-ins	0	0	0
Penalties	13	5	18
TOTAL	43	15	58

OVERALL GOAL SPLIT



COOL HEADS

OVER A THIRD OF LYON'S GOALS WERE HEADERS

Headers hit the net 31 times during the 2021/22 season and the figure could be upgraded to over 40 if we take into account scenarios where the penultimate touch was, for example, a header repelled by woodwork or goalkeeper and then tucked over the line.

However, successful headers were restricted to the top eight teams with Hoffenheim alone among the group stage fallers to score in this manner. The fact that 11 of Lyon's 31 goals were headers raises questions about the value of investing training-ground time on this facet of attacking play.



Wendie Renard heads in from a corner for Lyon's second-leg winner at Paris

LYON GO THE DISTANCE

CHAMPIONS SHOW CUTTING EDGE

The champions were the best in terms of playing into the opponent's penalty area. No less than 61% of Lyon's entries into the final third were successfully extended into the box. But their average of 55 entries into the attacking third lagged well behind the previous season's finalists, Barcelona and Chelsea, who posted the highest averages per game but were less efficient than Lyon in playing their way through to the box.

ATTACKING THIRD

		FINAL THIRD ENTRIES	BOX ENTRIES
	Lyon	55	61%
	Paris	62	55%
	Barcelona	79	54%
	Chelsea	78	54%
	Bayern München	62	52%
	Arsenal	56	51%
	Hoffenheim	44	49%
	Juventus	44	49%
	Wolfsburg	54	48%
	SL Benfica	42	45%
	WFC Kharkiv	39	45%
	Real Madrid	48	44%
	Breidablik	43	40%
	HB Køge	39	36%
	Häcken	56	35%
	Servette	36	34%



ALEXIA OUT IN FRONT

THE BARCELONA MIDFIELDER FINISHED CLEAR OF THE REST AS TOP SCORER ON 11 GOALS

The scoring chart for the 2021/22 season suggests that the manual for goalscoring is being gradually rewritten. Alexia Putellas, top scorer with 11 goals, could not, by any stretch of the imagination, be labelled a striker. During a typical game, heat maps will paint an average playing position near, from an attacking perspective, the top left of the centre circle. Her physical stature hardly attracts attention. In fact one of her virtues is not attracting attention. Until it's too late. Her vision and technique – not to mention her magical left foot in dead-ball scenarios – add up to playmaking qualities. But then she darts into scoring positions – and converts, relishing the spaces created by the team's theoretical target striker Jennifer Hermoso, adept at drawing centre-backs out of position.

Barcelona's playing philosophy, based on a high line and a compact block, means that Putellas doesn't fit into the box-to-box midfielder category. But she does cover a lot of ground. A total of 53.27km in the five knockout games, to be precise. She and fellow midfielder Aitana Bonmatí made vital contributions to Barça's advanced pressing style.

Some of the same characteristics could be applied to Tabea Wassmuth, one goal behind Putellas at the head of the chart. The Wolfsburg attacker can operate as a target striker if required. As Hope Powell remarked after watching her in action against Arsenal: "She runs the channels well with good pace and work ethic, in and out of possession. She worked the lines to receive in between and combine with the wide players. And she is a good striker of the ball and can score with her head."

Like Putellas, Wassmuth was an important component in transition play – to the extent that Monika Staab, after watching the return leg of the semi-final against Barcelona, said: "Wolfsburg did a great job defensively, using five whenever it was necessary, with [Sveindís Jane] Jónsdóttir mostly adding to the back four and sometimes Wassmuth." An unusual comment to make about a ten-goal striker.

The third on the list provokes similar reflections. Lyon's Catarina Macario generally operated as a free-spirit shadow striker in the wake of Ada Hegerberg, drifting wide to lose markers and then appearing in scoring positions. More traditional strikers, such as Hegerberg and Paris's Marie-Antoinette Katoto, undoubtedly made an impact on the competition. But the job description is evolving.

"PUTELLAS DARTS INTO SCORING POSITIONS AND CONVERTS, RELISHING THE SPACES CREATED BY THE TEAM'S THEORETICAL TARGET STRIKER JENNIFER HERMOSO"

TOP SCORERS

	APPS	MINS PLAYED	GOALS	ASSISTS
Alexia Putellas (Barcelona)	10	878	11	2
Tabea Wassmuth (Wolfsburg)	10	848	10	2
Catarina Macario (Lyon)	11	844	8	2
Marie-Antoinette Katoto (Paris)	7	631	7	0
Ada Hegerberg (Lyon)	10	626	6	2
Jordyn Huitema (Paris)	7	287	6	2
Jill Roord (Wolfsburg)	10	816	5	1
Jennifer Hermoso (Barcelona)	9	667	5	1
Cristiana Girelli (Juventus)	7	565	5	1
Aitana Bonmatí (Barcelona)	10	792	4	0
Ramona Bachmann (Paris)	9	382	4	3
Lea Schüller (Bayern)	7	585	4	1
Sam Kerr (Chelsea)	6	511	4	2

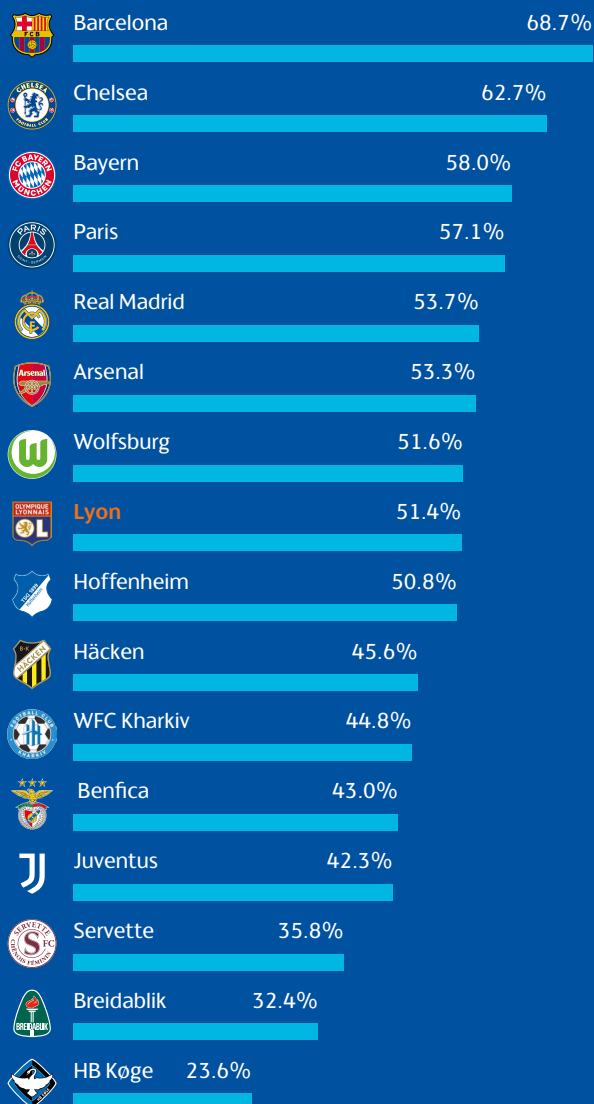


POSSESSION

BARCELONA DOMINATED MOST OF THE POSSESSION STATISTICS BUT IT WAS LYON'S MORE DIRECT, PRAGMATIC STYLE THAT ULTIMATELY PROVED MORE EFFECTIVE

The final highlighted a contrast. Barcelona's 61% share of possession was the lowest they had recorded during a season when their average was 68%. Lyon's 39% aligned with the 38% they had registered during the away leg of the semi-final against Paris. Even though they had dominated possession in earlier rounds (59% and 62% against Juventus, for example) the champions' average for the season was 51%. Among the top eight, only Juventus had a slimmer slice of the ball.

AVERAGE POSSESSION (%)



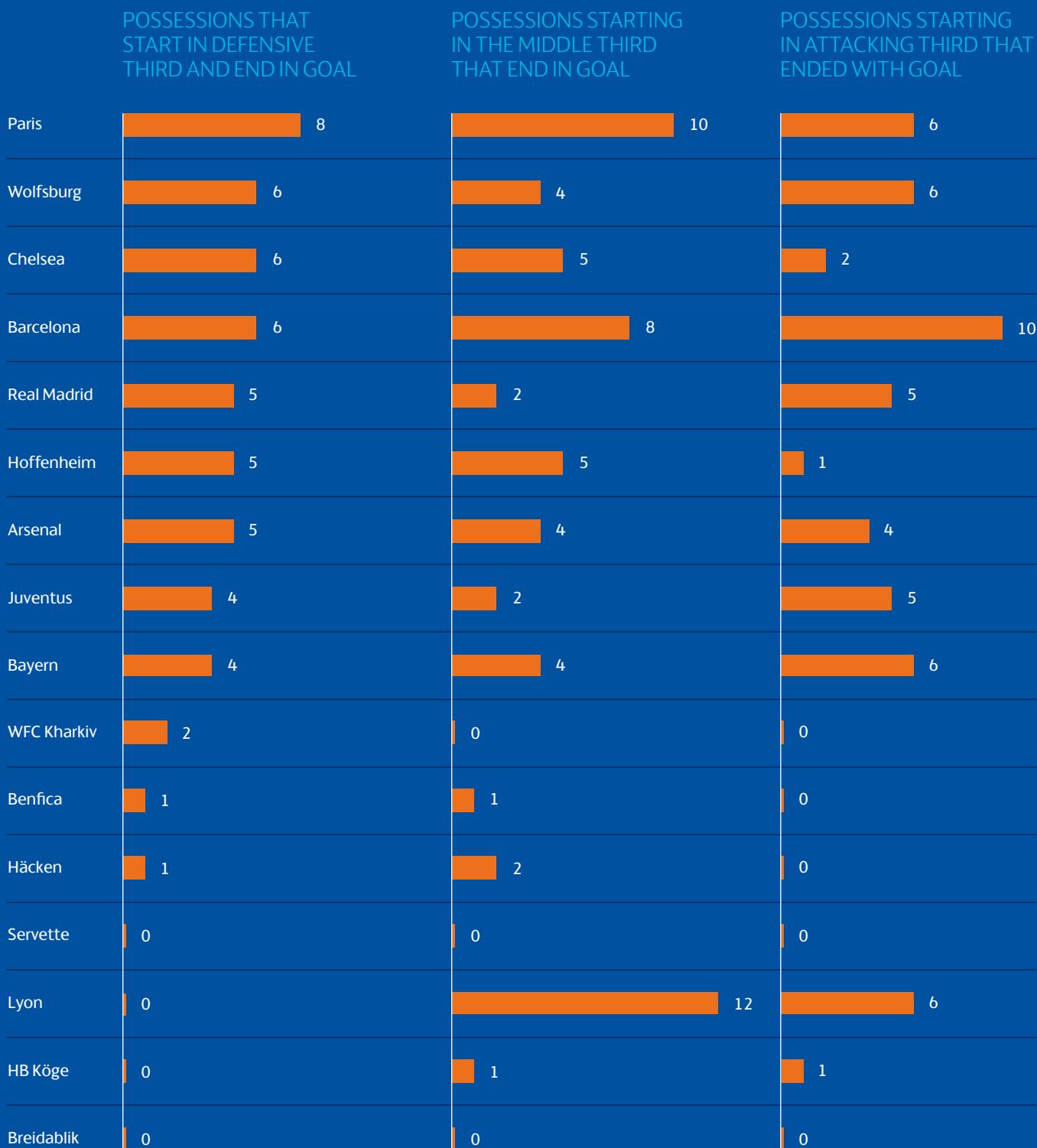
AVERAGE NUMBER OF PASSES PER POSSESSION



ANALYSIS

Barcelona's tally of 24 open-play goals featured six that had started in their defensive third and ended in the opposition's net. The same could be said of Wolfsburg, although their half-dozen back-to-front successes were of a more direct nature, while group fallers Chelsea also scored six of their 13 open-play goals by playing through all the thirds. In this chapter, Paris headed the field with eight moves initiated at the back and culminated with a goal. Lyon had none. The champions were the only team in the last eight to post a zero in this particular column.

The graphics provide confirmation that Lyon's run to the title was based on a more direct playing style focused on winning the second ball high up the pitch and fast transitions from midfield. Barcelona, on the other hand, based their game on more patient construction through the thirds with fluent middle-to-front positional rotations. "The striker Hermoso drops back into midfield," Monika Staab commented after watching them in Wolfsburg, "and Crnogorčević appears up front, as the left-back Rolfö plays very high when Barcelona are attacking. Everybody is moving





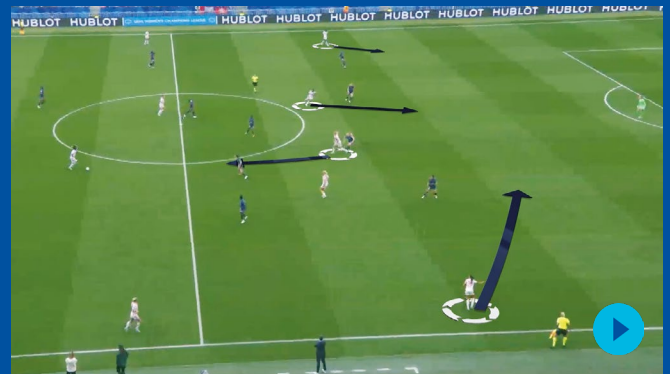
and available to receive the ball and play accurate passes. Through their excellent technique they can keep the ball and stay in possession for quite some time. The full-backs are very offensive, particularly Rolfö, always supporting attacking actions. When Barcelona are in possession everything is fine-tuned. Every player knows where to go and what to do. They are very patient in building up and they also switch from one side to the other. Crnogorčević gives them depth on the left, moving inside to allow Rolfö to play very high while Graham Hansen tends to stay wide on the right, using her 1v1 skills more as a traditional winger. Barcelona operate with a lot of players in front of the ball and have great variety in their offensive play, using depth and width."

"Lyon's strategy was to use the holding midfielders Henry and Horan to set up counters," Vera Pauw commented after seeing the second leg of their semi-final against Paris. "They had Hegerberg as the target for the first pass forward, with the shadow striker Macario as a free electron giving them diversity. Their other strategy was to break fast on the wings via the attackers Malard and Cascarino while Hegerberg was making herself a target in front of goal. Over on the left, the crosses were as early as possible whereas, on the right, we saw more penetrating runs into the penalty box or to the goal line. Lyon were dangerous in their transition to attack. The first goal and a disallowed second goal came from pressing forward within the defensive block and countering fast."

Although Barcelona ticked so many boxes, the 2021/22 title went to the team with a more pragmatic, direct style.



Barcelona building from the back against Real Madrid, with rotation in midfield and deep runs from central midfield areas



Lyon building from the back against Paris, with Ada Hegerberg as the main target and Catarina Macario with licence to drift and search for space



Lyon's Selma Bacha shields the ball from Juve's Sofie Junge Pedersen



Wolfsburg forward
Tabea Wassmuth

COUNTERATTACKS

THE ABILITY TO BREAK QUICKLY AND EFFICIENTLY WAS OFTEN A DECIDING FACTOR, WITH LYON, BARCELONA AND WOLFSBURG PARTICULARLY SUCCESSFUL

Even though the group stage often pitted them against opponents ready to sit back in deep defensive blocks, the top four teams led the field in terms of capacity to counterattack and shoot at goal within 15 seconds of regains. Among those eliminated in the group stage, Häcken and Breidablik also posted creditable stats, generally based on direct back-to-front deliveries.

The two finalists excelled at playing out of immediate counterpressure with few touches, quickly transferring the ball vertically with several players ready to attack spaces behind the defensive line. This is illustrated by two images where all 20 outfielders are compacted into a relatively small area.

A cameo from the semi-final (pictured right, top) against Paris Saint-Germain shows how Lyon, efficient at beating counterpressure with one or two passes, would then quickly transfer the ball for striker Ada Hegerberg to link with pacy wide players Delphine Cascarino and Melvine Malard.

The ability of Barça's Alexia Putellas, Aitana Bonmatí and Patri Guijarro to play out of intense pressure was showcased in their semi-final, when six Wolfsburg players were eliminated by short-passing interchanges (pictured right, middle). This created a scenario where five players could run at Wolfsburg's back four or exploit the spaces between and behind them, with a wide player (Caroline Graham Hansen or Mariona Caldentey) often staying high to provide an outlet for vertical attacks along the flanks.

As direct counterattacking was a key element of Wolfsburg's repertoire, Tommy Stroot's game plans generally favoured mid/low defending as a springboard for rapid responses. His team often using vertical supply to front-runner Tabea Wassmuth as a prelude to connections with Sveindis Jane Jónsdóttir on the left or Alexandra Popp, who appeared from deeper positions to threaten the back line with speed (pictured right, bottom).

Barça, Lyon and Wolfsburg impressively combined speed, technique and precision in well-designed and drilled counterattacking strategies.



Lyon start a counterattack against Paris Saint-Germain in the semi-final, with Ada Hegerberg as an option for the short pass and wingers threatening in behind



Barcelona regain the ball and escape Wolfsburg counterpressure in the semi-final



When Wolfsburg regain the ball against Barcelona, Wassmuth offers short while Sveindís Jane Jónsdóttir and Alexandra Popp sprint into space ready to attack

“THE TWO FINALISTS EXCELLED AT PLAYING OUT AND QUICKLY TRANSFERRING THE BALL”

AVERAGE SHOTS PER GAME WITHIN 15 SECONDS OF A TURNOVER

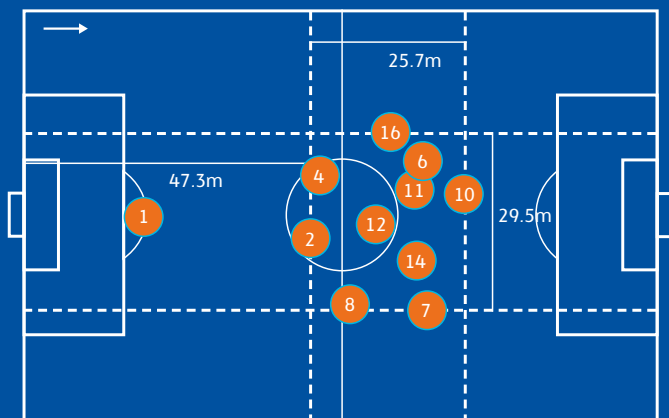
	Wolfsburg	4
	Barcelona	3.8
	Paris	3.4
	Lyon	3.4
	Häcken	2.8
	Breidablik	2.8
	Bayern	2.4
	Juventus	2.3
	Real Madrid	2.3
	Hoffenheim	2
	Chelsea	1.8
	Servette	1.8
	Arsenal	1.5
	SL Benfica	1.5
	HB Køge	1.3
	WFC Kharkiv	0.8

PRESS AND COUNTERPRESS

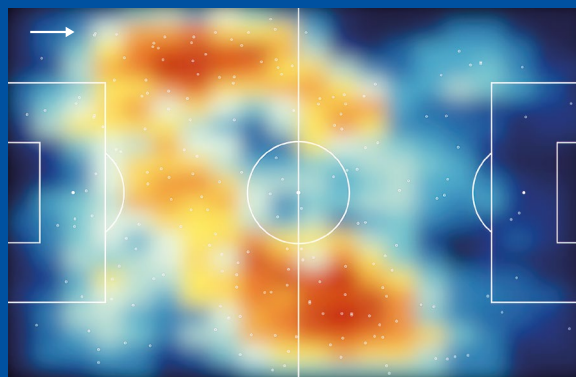
FINALISTS LYON AND BARCELONA LED THE WAY IN TERMS OF HIGH PRESSING AND REGAINS UP THE PITCH, ALTHOUGH THEY USED DIFFERENT APPROACHES TO ACHIEVE THEIR GOALS

Although the two finalists were the teams who reaped the richest harvest from high pressing and regains in the attacking third, their modus operandi differed substantially. Lyon, throughout the competition, tended to defend in a mid or low block and had very clear principles with regard to when and where to trigger their high-pressing mechanisms. As the heat map shows, this was generally in wide areas and forward-facing once players had moved towards their mid-block positions.

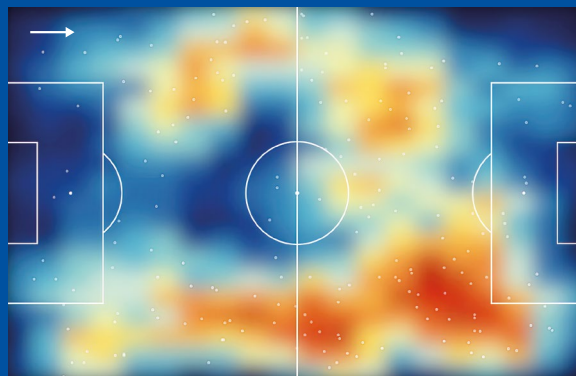
Barcelona, although similarly effective, were set up to press equally aggressively and compactly but over wider areas of opposition territory – in other words, in central sectors (rather than exclusively in the wide areas) from where they quickly transferred the ball behind the opponents' back line. Like the men's team, trademark triangular combination attacking provided the platform for immediate collective pressing after losses of possession, with the short distances between players meaning that, if one player was bypassed, there was invariably a team-mate ready to maintain pressure on the ball – or intercept it. This was illustrated during the quarter-final against Real Madrid when, faced by opponents who were generally cautious in the wide areas, they were able to press in compact, intense fashion in an area covering, as the graphic shows, a central 25-30m band with only two players (marginally) in Barcelona's half of the pitch.



Barcelona's out of possession shape from the quarter-final versus Real Madrid



Lyon chose the right moments to press in the final against Barcelona



Barcelona employing the high press against Wolfsburg in the semi-final first leg



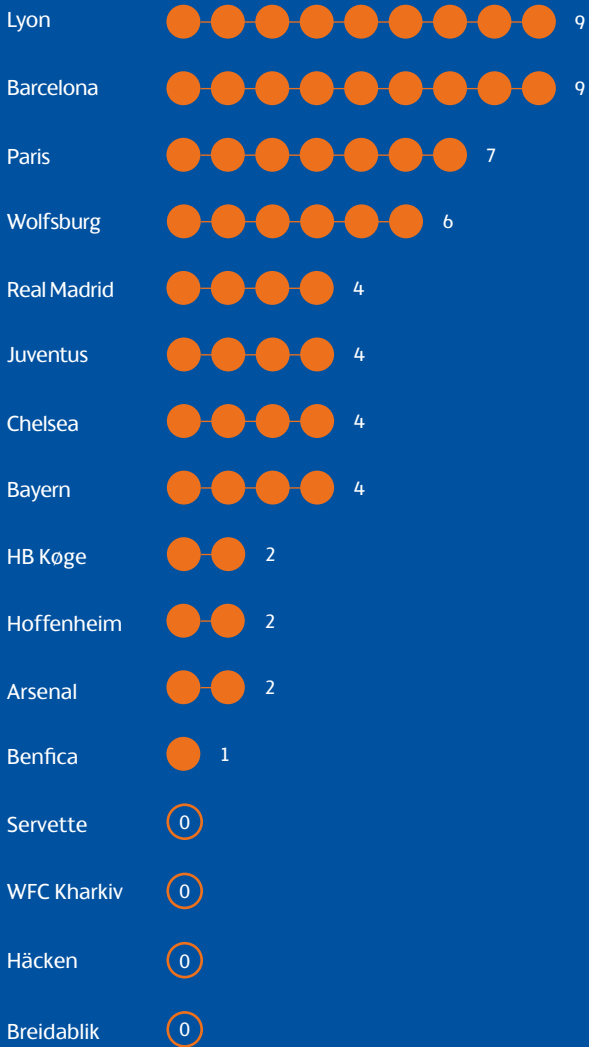
By attacking with players in close proximity to each other, Barcelona had a good platform to quickly employ counterpressure and restart their attack



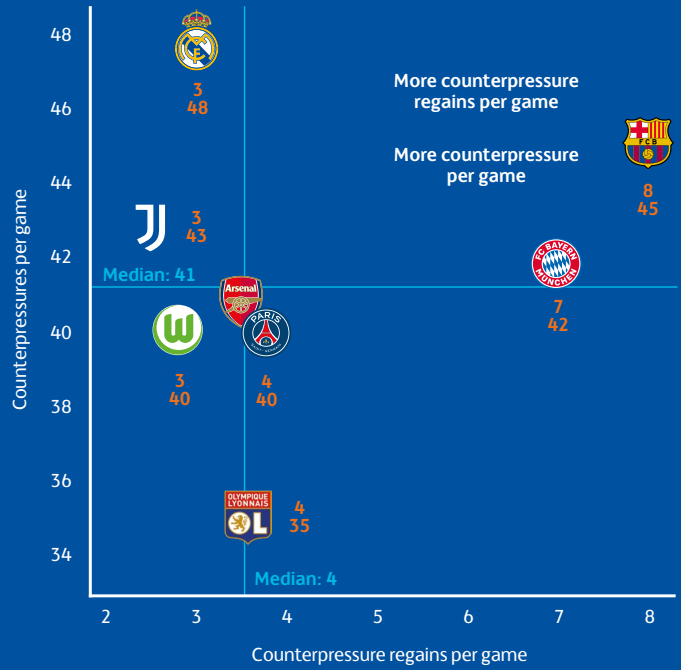
Barcelona's Patricia Guijarro presses Wolfsburg forward Tabea Wassmuth



BALL RECOVERIES IN FINAL THIRD LEADING TO A SHOT



COUNTERPRESSURE



"LYON DEFENDED IN A MID OR LOW BLOCK AND HAD VERY CLEAR PRINCIPLES AS TO WHEN AND WHERE THEY TRIGGERED THE HIGH-PRESS"

CONTROLLING TRANSITION

WITH THE TOP TEAMS MOSTLY FAVOURING A HIGH DEFENSIVE LINE, A COVERING STRUCTURE TO PREVENT COUNTERATTACKS WAS OF VITAL IMPORTANCE

While most of the group stage fallers opted for risk-management strategies based on mid or low defensive blocks, the common denominator among the top teams was a high defensive line with space behind it to make them potentially vulnerable against opponents' transition play – as illustrated by the fact that Arsenal conceded seven of their 16 goals after ball losses in dangerous areas. By contrast, Bayern, who also played eight games, conceded none.

Bayern generally employed two centre-backs and two holding midfielders as covering structure to pre-empt counters. The picture shows that, with both full-backs involved in six-player attacking, Saki Kumagai and Sarah Zadrazil would form the first covering line, with centre-backs Carina Wenninger and Glódis Viggósdóttir defending the halfway line.

Real Madrid were almost as frugal as Jens Scheuer's team in terms of minimising their opponents' opportunities to shoot or score within 15 seconds of a turnover. The image shows their transition into defensive shape, with the back four, marshalled by the experienced Babet Peter, quick to form the line while one of the two screening midfielders (Claudia Zornoza and Teresa Abelleira) shields the central area with a view to forcing opponents wide.

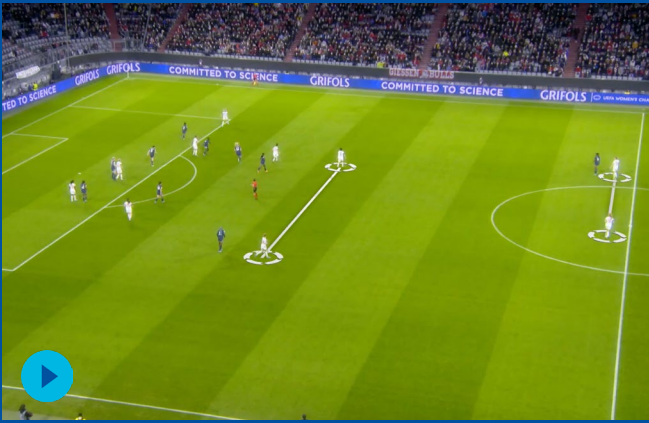
The two finalists, Lyon and Barcelona, restricted their vulnerability by balancing the midfield with at least one pivot and three players ready to defend.

In Lyon's case, the speed of full-backs Ellie Carpenter and Selma Bacha generally allowed them to set up a 4+1 controlling structure, with the experienced Amandine Henry covering two centre-backs who were rarely lured out of position. In the final, this area provided openings for Barcelona's approach play – to the extent that Sonia Bompastor instructed Lindsey Horan to partner Henry in the covering role.

Much the same applied to semi-finalists Paris Saint-Germain, with the pace of full-backs Ashley Lawrence and Sakina Karchaoui allowing them to pre-empt counters along the flanks while pivotal midfielder Kheira Hamraoui shielded the two centre-backs – with the well-drilled variation of a 3+1 structure to protect the central area if one of the full-backs was displaced.

OPPONENT SHOTS WITHIN 15 SECONDS OF A TURNOVER PER GAME

	Servette	4
	WFC Kharkiv	4
	Benfica	3.7
	Breidablik	3.5
	Häcken	3.3
	Hoffenheim	2.8
	Arsenal	2.8
	Juventus	2.6
	HB Køge	2.5
	Barcelona	2.4
	Lyon	2.3
	Paris	1.9
	Wolfsburg	1.9
	Chelsea	1.8
	Real Madrid	1.6
	Bayern	1.5



Bayern München ready to defend a transition with two centre-backs and two pivots



Real Madrid ready to defend a transition with a back four and two pivots



Lyon ready to defend a transition with a back four and a single pivot



Paris ready to defend a transition with a back three and a single pivot

Full-back Saki Kumagai was a key part of Bayern's first covering line



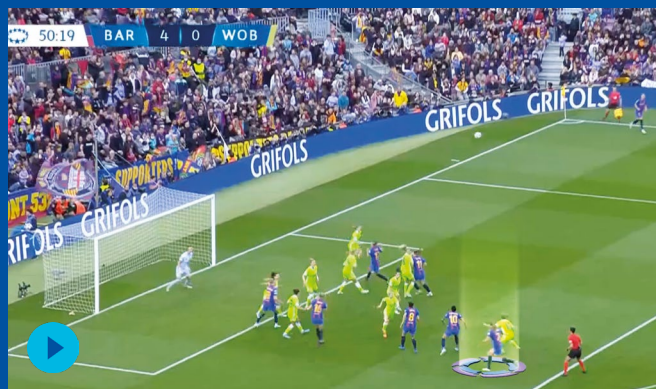
SET PLAYS

LYON'S PHYSICAL ATTRIBUTES AND WELL-WORKED ROUTINES MADE THEM THE MOST SUCCESSFUL SIDE FROM CORNERS, WHILE BARCELONA TOOK A DIFFERENT ROUTE TO GOAL

Wendie Renard's contribution from set plays is easy to analyse and hard to stop. Lyon had the most numerous successes in converting corners into goals – five of them, six if we include the corner turned into her own net by a Håcken player. The champions capitalised on their riches in stature and strength supplied by striker Ada Hegerberg, midfielders Amandine Henry and Lesley Horan or Renard's fellow defender Griedge Mbock Bathy. They often preferred change-footed, inswinging deliveries from the right by left-back Selma Bacha with, as the picture shows, imposing physical presence in the goal area and, sometimes, two players in the near-post zone to draw out or distract defenders and open space at the back post. Horan or Henry tended to pair with Renard, blocking a marker to earn free heading space for the tall centre-back.



Amandine Henry intentionally blocks Wendie Renard's marker with the aim of earning a free header



Barcelona stack up a group of four players who split and attack multiple areas in the penalty box

Barcelona, by contrast, work with fewer resources in terms of height and power (basically the four defenders plus striker Jennifer Hermoso), frequently preferring a short-corner option, such as the one which earned them a goal in Hoffenheim. The screenshot from the semi-final home leg against Wolfsburg shows them stacking up a six player central train backed by one more on the edge of the box. Of the six, two attack the front space and two attack the back space while the other two block the central area. Right back Marta Torrejon makes a late run into the box which would have led to the fifth goal if not for offside.

Paris's three successes (one against Real Madrid, two against Bayern) were left-footed inswingers from the right – as the still from the quarter-final in Germany illustrates. It also shows that, without over-committing in terms of numbers, they relied on the physical presence of the two centre-backs, right-back Ashley Lawrence and striker Marie-Antoinette Katoto for a more classical approach, with one player restricting the keeper's ability to claim the ball and three players working the central area. Centre-back Paulina Dudek would often make an off-the-back run, circling from the penalty spot into a position at the far post.



Paris block the goalkeeper and attack the last defensive zone with speed and power



21%

Excluding penalties, 21% of goals stemmed from set plays.

10

teams scored from corners with the top four accounting for 14 out of 22.

0

In the knockout rounds, Real Madrid were alone in not converting a corner or free-kick.

45

Most chances were created from set plays by Barcelona, followed by Lyon with 32.

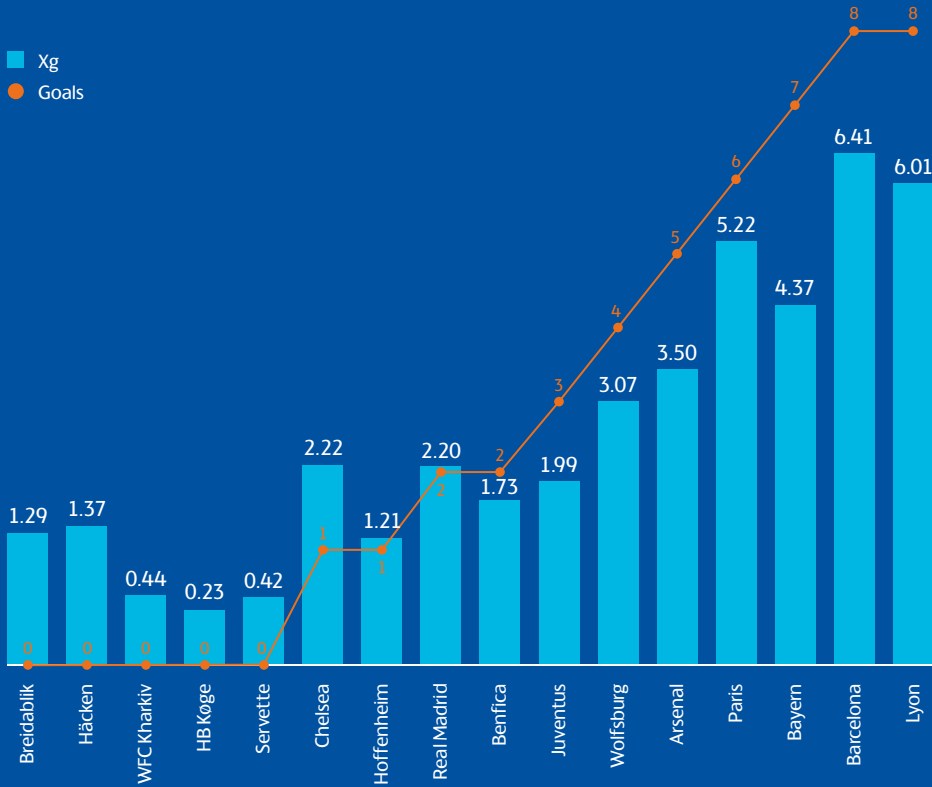
3

The season's only three successes from direct free-kicks were all struck with the left foot.

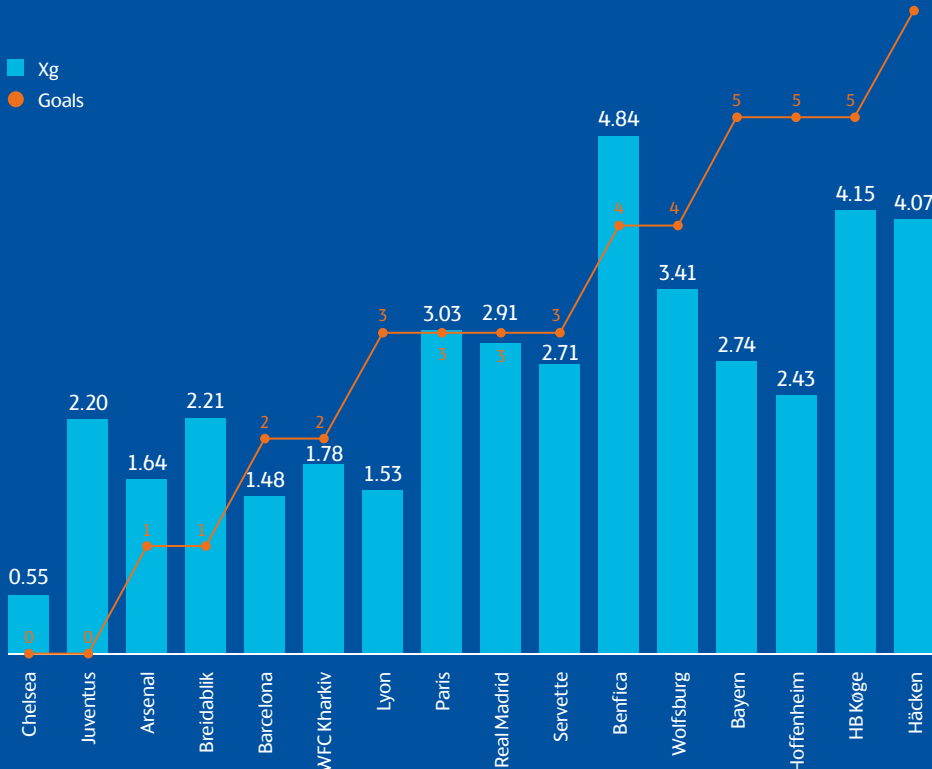
24

set-play goals stemmed from change-footed inswinging deliveries – 19 left-footed from the right.

SET-PLAY GOALS AND EXPECTED GOALS



SET-PLAY GOALS AND EXPECTED GOALS CONCEDED



GOALKEEPING

THE INCREASING DUALITY OF THE ROLE OF THE KEEPER MEANT THEY WERE CALLED UPON TO NOT ONLY PREVENT GOALS BUT ALSO TO LAUNCH ATTACKS

RISK v REWARD

SHORT PASSING OUT FROM THE BACK CARRIED A HIGH DEGREE OF RISK

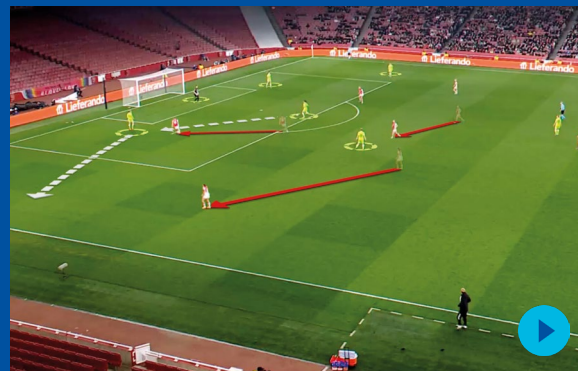
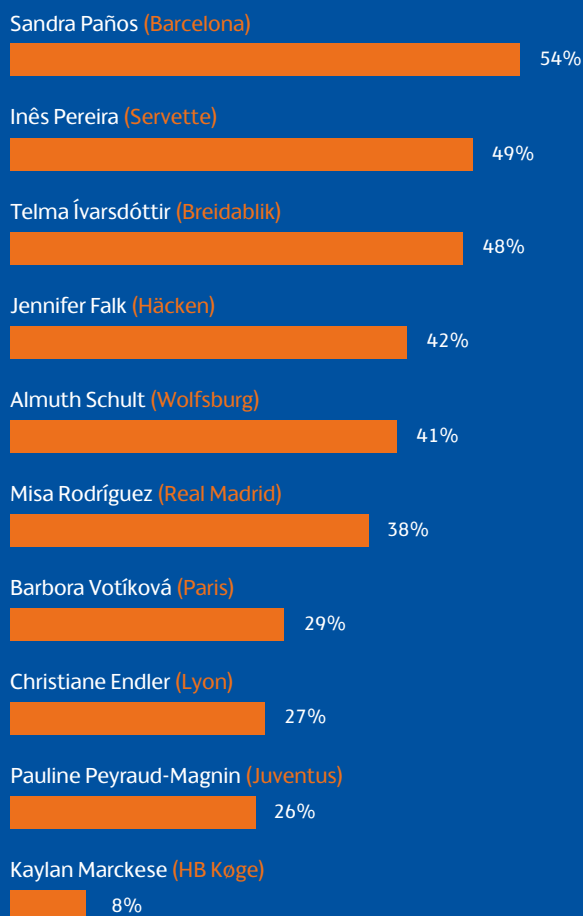
Five goalkeepers kept four clean sheets. Ten saved more than 60% of the opposition's goal attempts, with six of them reaching or exceeding the 70% mark. The season's statistics speak for themselves. Apart from the basics of shot-stopping, UEFA's technical observers focused on the keepers' contributions to transition play and initiating construction through the thirds. There were dividends from playing long, such as Wolfsburg's third goal in the decisive group game against Chelsea, when Almuth Schult's long pass was nodded on for Tabea Wassmuth to score.

The emphasis, however, was on building from the back, which entailed a risk element. For example, the short pass, intercepted at the edge of the box, which allowed Wolfsburg to take a 1-2 lead at Chelsea; or a similar scenario which provided Lyon's third goal away to Häcken. The preference for short-passing starts to construction work was reflected in stats related to goal kicks, with goalkeepers playing to team-mates inside the box even when, as the picture below from the final demonstrates, Lyon had all ten outfielders in the Barcelona half of the pitch. The other image (below right) shows how Wolfsburg's Schult plays short with the intention of drawing Arsenal players forward, illustrating that keepers were unafraid of inviting pressure and that the top teams' centre-backs confidently received the ball even when opponents were ready to spring into a high press in the penalty area.



Barcelona and Sandra Paños going short from a goal kick to invite pressure from Lyon

PERCENTAGE OF GOAL KICKS RECEIVED INSIDE BOX



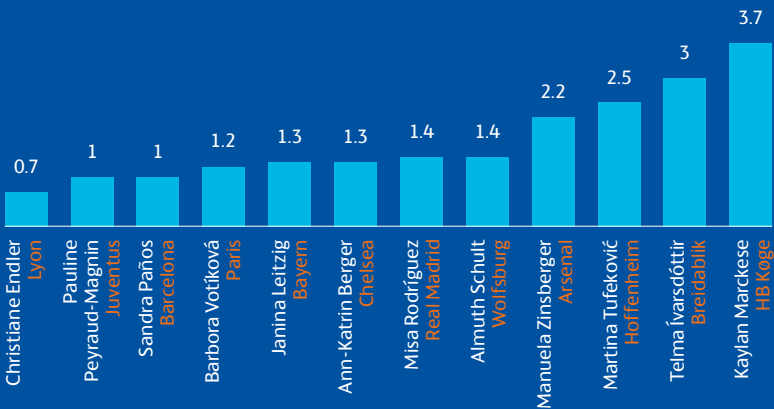
Almuth Schult and Wolfsburg also going short from a goal kick, in this case inviting pressure from Arsenal



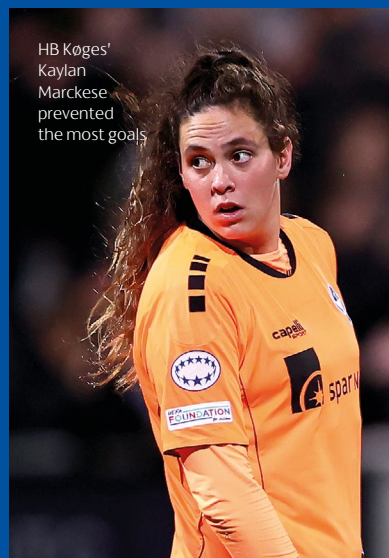
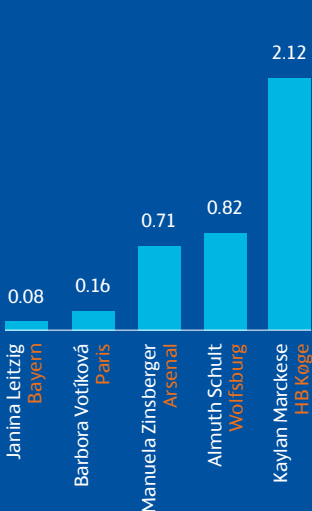
CLEAN SHEETS

	Sandra Paños	Barcelona		4
	Pauline Peyraud-Magnin	Juventus		4
	Misa Rodríguez	Real Madrid		4
	Christiane Endler	Lyon		4
	Almuth Schult	Wolfsburg		4
	Barbora Votíková	Paris		2
	Telma Ívarsdóttir	Breidablik		1
	Martina Tufeković	Hoffenheim		1
	Manuela Zinsberger	Arsenal		1
	Janina Leitzig	Bayern		1
	Ann-Katrin Berger	Chelsea		1

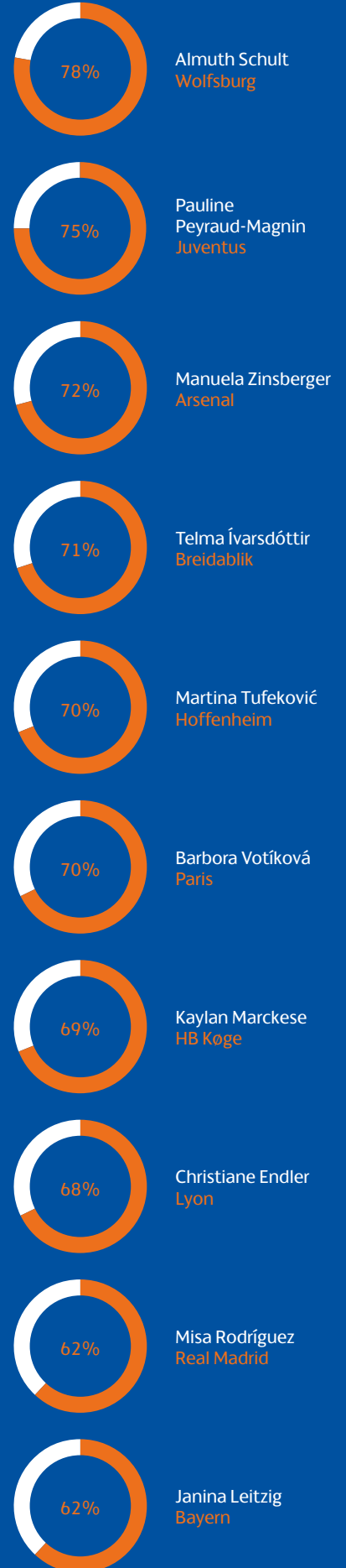
GOALS CONCEDED PER GAME



GOALS PREVENTED

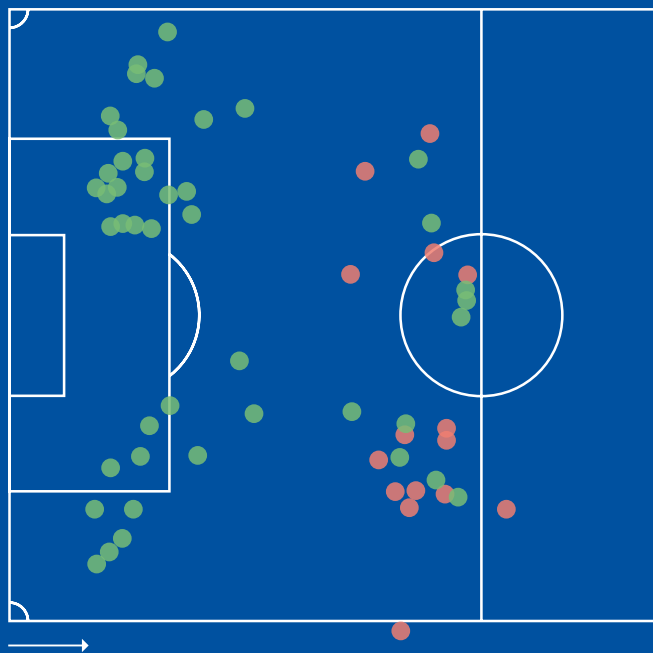


SAVE PERCENTAGE

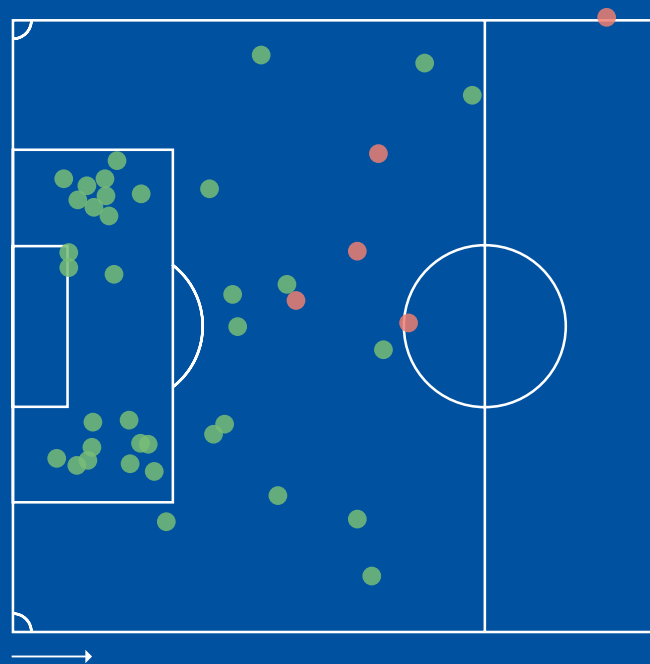


GOAL-KICK PLACEMENT

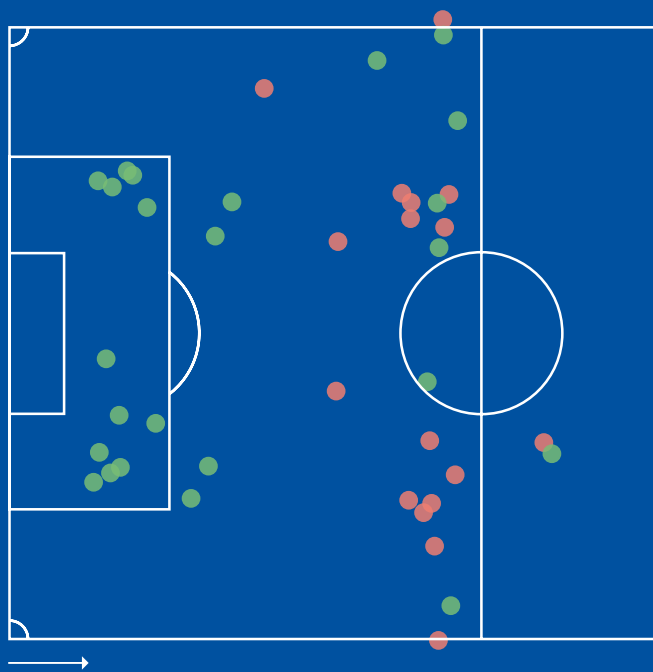
● Completed ● Incomplete



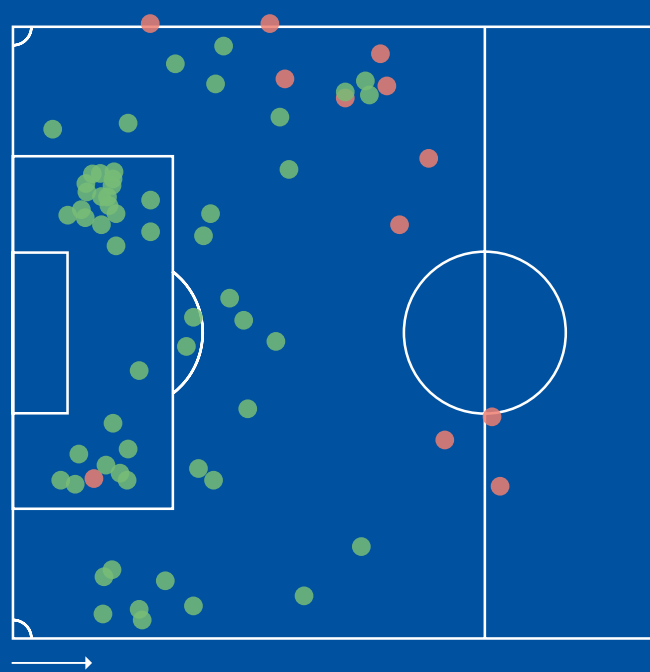
Christiane Endler pass locations from goal kicks for Lyon



Sandra Paños pass locations from goal kicks for Barcelona



Barbora Votíková pass locations from goal kicks for Paris



Almuth Schult pass locations from goal kicks for Wolfsburg



THE LONG AND THE SHORT OF IT

WHILE SEVERAL KEEPERS BUILT FROM THE BACK, LYON AND PARIS PREFERRED TO GO LONG

Playing styles were also reflected by statistics related to the length and accuracy of goalkeepers' passing. It is unsurprising to see Sandra Paños among the keepers who posted the lowest averages of passing length within Barcelona's tactical framework of trying to build from the back, even from structured starts, inviting pressure and then using their tight-space techniques to beat the first pressing line. Bayern's Janina Leitzig registered a 100% completion rate in short passing aimed at inviting opponents forward while, still in Germany, Hoffenheim's Martina Tufeković's low average passing distance reflects the playing style of a team whose long passing accounted for only 7.5% of the total and who set out to play through the thirds.

By contrast, the keepers of the two French teams preferred longer pragmatic solutions. The champions' Christiane Endler topped the 30m mark in average passing distance while Paris keeper Barbora Votíková's combination of high distance and low completion rate placed her second to HB Køge keeper Kaylan Marckese, whose clearances averaged just under 45m, with almost half of them immediately surrendering possession to the opposition.

AVERAGE PASS LENGTH FROM GOAL-KICKS



PASSING ACCURACY AND LENGTH

	PASS ACCURACY (%)	AVERAGE PASS LENGTH (M)
Sandra Paños (Barcelona)	87.8	23.8
Almuth Schult (Wolfsburg)	85.3	25.8
Pauline Peyraud-Magnin (Juventus)	62.2	34.5
Christiane Endler (Lyon)	75	30.5
Misa Rodríguez (Real Madrid)	74	26.4
Barbora Votíková (Paris)	58.5	34.7
Manuela Zinsberger (Arsenal)	77.4	25.8
Ann-Katrin Berger (Chelsea)	85.7	25.3
Janina Leitzig (Bayern)	100	22.3
Telma Ívarsdóttir (Breidablik)	75.3	26.4
Martina Tufeković (Hoffenheim)	89.8	20.6
Kaylan Marckese (HB Køge)	51.8	44.8



Sandra Paños preferred to play the ball short as Barcelona aimed to build from the back

FITNESS

WHILE PLAYERS FROM A NUMBER OF CLUBS FIGURED IN THE FASTEST SPRINT CHARTS, BAYERN MÜNCHEN WERE OUT ON THEIR OWN IN TERMS OF GROUND COVERED

PICKING UP SPEED

WIDE PLAYERS SET THE PACE, BUT STRIKERS AND CENTRE-BACKS ALSO FEATURED PROMINENTLY

The benchmarks are stabilising. Two sprints in excess of 32km/h had been registered in 2020/21 and the same applied to the 2021/22 season – speeds not far behind the top speed merchants in the 20/21 men's competition, where the peak velocity was just above 34km/h.

Although wide players occupy five places in the season's top ten, statistics underscore the need for speed to figure in a variety of job descriptions. Two (Asisat Oshoala and Ewa Pajor) are central strikers, meaning that centre-backs have to be prepared to match them for pace – as illustrated by the sprint speeds of Leah Williamson and Kadeisha Buchanan.

The maverick in the list is Laurina Fazer. The general rule is for central midfielders to cover a high distance rather than deliver eye-catching sprint statistics. Paris's 18-year-old, however, started the semi-final in Lyon in the central holding role but, in the team's transitions to defence, she was usually required to move rapidly to her right to stifle Selma Bacha's runs from the left-back position, while Sara Däbritz dropped into a central covering role.

FASTEST SPRINTS (km/h)

Sveindis Jónsdóttir	Wolfsburg	32.87
Laurina Fazer	Paris	32.34
Asisat Oshoala	Barcelona	31.53
Delphine Cascarino	Lyon	31.38
Ewa Pajor	Wolfsburg	30.68
Leah Williamson	Arsenal	30.47
Ellie Carpenter	Lyon	30.36
Kadeisha Buchanan	Lyon	30.23
Klara Bühl	Bayern	30.22
Kadidiatou Diani	Paris	30.02

STRIKING DISTANCE

THE TOP SIX SLOTS IN THE DISTANCE COVERED TABLE WERE TAKEN BY BAYERN PLAYERS

Bayern München set the benchmark. Players from Jens Scheuer's squad monopolised the top six places in terms of average distance covered per game and provided seven of the season's top ten.

With Bayern's middle-to-front players dominant, Glódis Viggósdóttir emerged alongside Paris's Sweden international Amanda Illestedt as centre-backs who covered unusual amounts of ground. The other two 'interlopers' were Paris holding midfielder Kheira Hamraoui and the Real Madrid N°8 Maite Oroz, who was the central component in the three-player line behind striker Esther González, with responsibilities to drop into a midfield quintet in her team's deep defensive block.

AVERAGE DISTANCE PER MATCH (PLAYERS)

Hanna Glas (Bayern)	12.89km
Giulia Gwinn (Bayern)	12.59km
Klara Bühl (Bayern)	12.44km
Lina Magull (Bayern)	12.32km
Saki Kumagai (Bayern)	12.09km
Glódis Viggósdóttir (Bayern)	11.68km
Maite Oroz (Real Madrid)	11.53km
Amanda Illestedt (Paris)	11.28km
Kheira Hamraoui (Paris)	11.15km
Lineth Beerensteyn (Bayern)	11.12km



Hanna Glas covered the most ground for Bayern

COLLECTIVE DRIVE

BAYERN ALSO COVERED THE MOST DISTANCE OVERALL

Bayern's domination of the individual chart gives credibility to their equally dominant position in terms of the team's collective average of distance covered, with a figure well in excess of averages in the men's equivalent competition.

With six of the last eight teams closely grouped around the overall average of 111.79km per game, the eye-catching statistic is Lyon's appearance at the foot of the table with a figure 7% lower than the general average and 16% behind Bayern. With other teams able to match the champions in translating compactness into economy of movement, a conditioning factor may have been the relatively low ball-in-play time during most of Lyon's matches.

AVERAGE DISTANCE PER MATCH (TEAMS)





ARSENAL WFC



COACH

JONAS EIDEVALL



BORN: 28/01/1983, Borås (SWE)
NATIONALITY: Swedish
HEAD COACH: Since 28/06/2021
UEFA CLUB TROPHIES WON: 0

GROUP C

BAR
L 4-1

HOF
W 4-0

HER
W 1-5

HER
W 3-0

BAR
L 0-4

HOF
L 4-1

QUARTER-FINALS

SEMI-FINALS

FINAL

WOL
D 1-1

WOL
L 2-0

Matches: Orange = home, white = away; grey = final; see page 5 for full club names

AVERAGES

POSSESSION

53%

Max. 80% v HB Køge (a)
Min. 28% v Barcelona (h)
UWCL rank: 6

POSSESSION POSITION

First third 33%

Middle third 48%

Attacking third 20%

515

PASSES ATTEMPTED

Max. 799 v HB Køge (a)
Min. 292 v Barcelona (h)
UWCL rank: 4

84%

PASS ACCURACY

Max. 90% v HB Køge (h)
Min. 72% v Barcelona (h)
UWCL rank: 2

PASS DISTANCE*

Long 44 (9% of total) UWCL rank: 7=

Medium 217 (42%) UWCL rank: 3=

Short 254 (49%) UWCL rank: 4

PASSES PER DEFENSIVE ACTION**

Average UWCL rank
13.8 9

RECOVERIES IN ATTACKING THIRD

Average UWCL rank
5.9 11

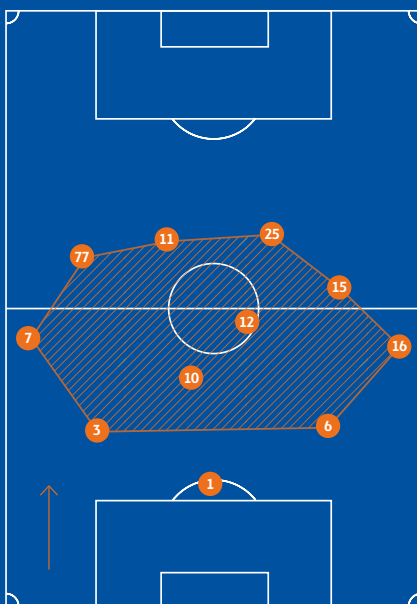
*Decimal points account for the extra/missing 1%

**Number of passes conceded in opposition and middle thirds divided by number of defensive actions. A lower PPDA indicates a higher degree of pressing.

SHAPE

Example: v Wolfsburg (a)

3 In possession



SQUAD

App Min G A

GOALKEEPERS

1	Manuela Zinsberger	5	450
18	Lydia Williams	3	270

DEFENDERS

3	Lotte Wubben-Moy	4	360	2
4	Anna Patten	3	198	1
5	Jen Beattie	4	321	
6	Leah Williamson	5	450	1
7	Steph Catley	8	566	1 1
16	Noelle Maritz	6	511	
20	Simone Boye Sørensen	2	101	
22	Viki Schnaderbeck	1	1	
26	Laura Wienroither*	1	11	

MIDFIELDERS

8	Jordan Nobbs	7	391	1 2
10	Kim Little	8	646	1
12	Frida Maanum	8	499	1 1
13	Lia Wälti	6	461	

FORWARDS

9	Beth Mead	7	471	3
11	Vivianne Miedema	8	546	2 1
14	Nikita Parris	8	330	1
15	Katie McCabe	8	552	1
19	Caitlin Foord	6	336	2 1
23	Mana Iwabuchi	4	108	
25	Stina Blackstenius**	2	173	
77	Tobin Heath	4	168	1 2

*Laura Wienroither also played for Hoffenheim

**Stina Blackstenius also played for Häcken

App = Appearances; Min = Minutes played; G = Goals; A = Assists

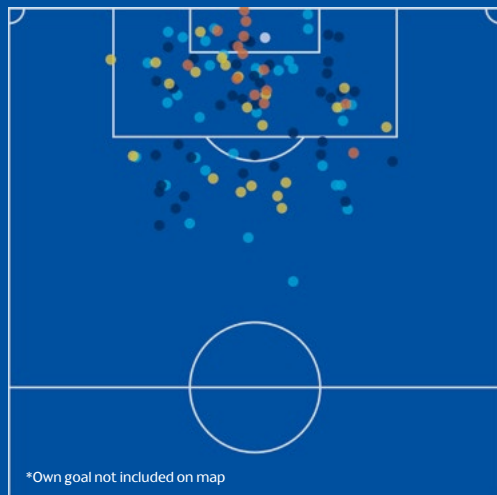
AVERAGE AGE

27.3

CARDS

15 0

ATTEMPTS



*Own goal not included on map

15 GOALS (1 own goal)
1.88 per match; UWCL rank: 7=

15.5 EXPECTED GOALS (xG)
1.9 per match; UWCL rank: 5=

109 GOAL ATTEMPTS
13.6 per match; UWCL rank: 8

54 ON TARGET
6.8 per match; UWCL rank: 4



PLAYER STATISTICS

Where totals are equal, rank is decided by next value

GOALS	G	S	OT	xG
1 Vivianne Miedema	2	24	12	4.5
2 Caitlin Foord	2	5	4	1.4
3 Lotte Wubben-Moy	2	2	2	0.7

G = Goals; S = Shots; OT = On Target; xG = Expected Goals

PASSES	Att	R	S%	PF%
1 Lia Wälti	402	328	87	32
2 Leah Williamson	390	286	86	44
3 Lotte Wubben-Moy	312	239	91	35

Att = Attempted; R = Passes Received; S = Successful; PF = Pass Forward

CHANCE CREATION	A	KP	xA
1 Beth Mead	3	12	0.9
2 Jordan Nobbs	2	8	0.6
3 Tobin Heath	2	1	0.4

A = Assists; KP = Key Passes; xA = Expected Assists

DEFENDING	P	BR	TW	I
1 Vivianne Miedema	128	25	3	3
2 Beth Mead	125	27	7	5
3 Nikita Parris	106	22	4	2

P = Pressures; BR = Balls Recovered; TW = Tackles Won; I = Interceptions

KEY FEATURES

- 1-4-4-2 with 25 Blackstenius leading attack; 11 Miedema as shadow striker
- Combination play with individually strong, technical, intelligent players
- 10 Little playmaker; passes, solo runs, vision, ball-winning, ability to control tempo
- Full-backs high to give width; keeper alert to danger behind high defensive line
- Switches of play to wingers ready to make infield runs or use 1v1 skills
- Mix of collective high press and retreat into mid-third defensive block
- Calm transitions to attack with emphasis on keeping possession, controlling game



FC BARCELONA



ESP

COACH

JONATAN GIRÁLDEZ



BORN: 27/11/1991, Vigo (ESP)
NATIONALITY: Spanish
HEAD COACH: Since 02/07/2021
UEFA CLUB TROPHIES WON: 0



GROUP C

ARS W 4-1	HER W 0-2	HOF W 4-0	HOF W 0-5	ARS W 0-4	HER W 5-0	MAD W 1-3	MAD W 5-2	WOL W 5-1	WOL L 2-0	LYO L 3-1
--------------	--------------	--------------	--------------	--------------	--------------	--------------	--------------	--------------	--------------	--------------

QUARTER-FINALS

SEMI-FINALS

FINAL

Matches: Orange = home, white = away; grey = final; see page 5 for full club names

AVERAGES

POSSESSION

69%

Max. 82% v HB Køge (a)
Min. 61% v Lyon (n)
UWCL rank: 1

POSSESSION POSITION

First third	20%
Middle third	52%
Attacking third	28%

656

PASSES ATTEMPTED

Max. 810 v HB Køge (a)
Min. 522 v Lyon (n)
UWCL rank: 1

88%

PASS ACCURACY

Max. 91% v Hoffenheim (a)
Min. 81% v Wolfsburg (a)
UWCL rank: 1

PASS DISTANCE*

Long	34 (5% of total)	UWCL rank: 14=
Medium	251 (38%)	UWCL rank: 1=
Short	372 (57%)	UWCL rank: 1

PASSES PER DEFENSIVE ACTION**

Average	UWCL rank
9.2	2

RECOVERIES IN ATTACKING THIRD

Average	UWCL rank
12	1

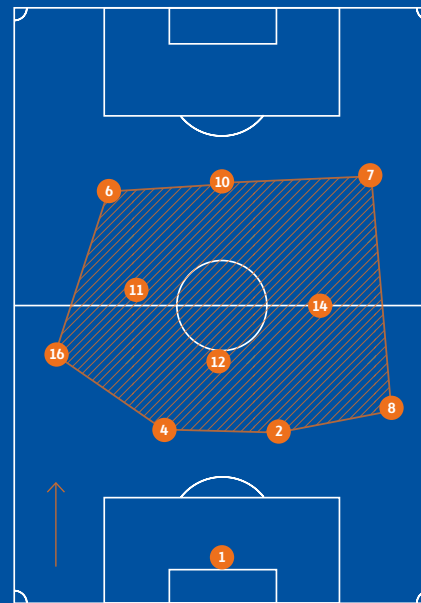
*Decimal points account for the extra/missing 1%

**Number of passes conceded in opposition and middle thirds divided by number of defensive actions. A lower PPDAs indicates a higher degree of pressing.

SHAPE

Example: v Real Madrid (h)

3 In possession



SQUAD

GOALKEEPERS

	App	Min	G	A
1 Sandra Paños	10	900		
13 Catalina Coll	1	90		

DEFENDERS

2 Irene Paredes	10	801	1	
3 Jana Fernàndez	4	250		
4 María Pilar León	9	748	1	2
5 Melanie Serrano	5	184		
8 Marta Torrejón	10	749	2	1
15 Leila Ouahabi	9	317	1	
17 Andrea Pereira	5	279		
18 Ana-Maria Crnogorčević	9	508	1	1

MIDFIELDERS

9 Mariona Caldentey	7	316	1	1
11 Alexia Putellas	10	878	11	2
12 Patricia Guijarro	8	646		3
14 Aitana Bonmatí	10	792	4	
23 Ingrid Syrstad Engen	9	280	1	
29 Maria Perez	1	11		

FORWARDS

6 Claudia Pina	8	297	2	2
7 Caroline Graham Hansen	9	717	2	4
10 Jennifer Hermoso	9	667	5	1
16 Fridolina Rolfö	11	800	3	6
19 Bruna Vilamala	2	52		
20 Asisat Oshoala	6	246	1	2
22 Lieke Martens	6	316	2	2
32 Ornella Vignola	1	21		
33 Ona Baradad	2	25		

App = Appearances; Min = Minutes played; G = Goals; A = Assists

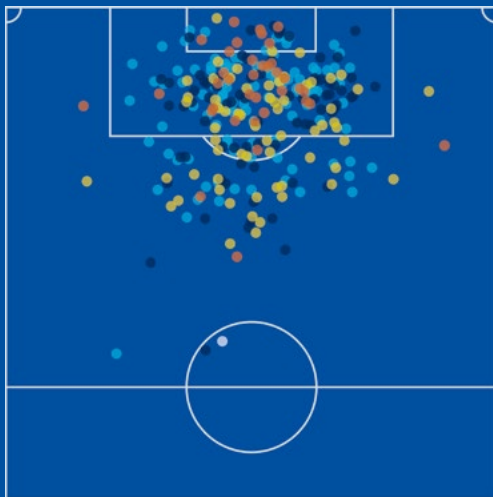
AVERAGE AGE

25.6

CARDS

13 0

ATTEMPTS



38 GOALS
3.45 per match; UWCL rank: 1

38.4 EXPECTED GOALS (xG)
3.5 per match; UWCL rank: 1

298 GOAL ATTEMPTS
27.1 per match; UWCL rank: 1

119 ON TARGET
10.8 per match; UWCL rank: 1

GOALS	13%
SAVED	27%
BLOCKED	23%
WOODWORK	1%
OFF TARGET	37%

PLAYER STATISTICS

Where totals are equal, rank is decided by next value

GOALS	G	S	OT	xG
1 Alexia Putellas	11	37	21	6.3
2 Jennifer Hermoso	5	27	12	6.2
3 Aitana Bonmatí	4	29	10	3.9

G = Goals; S = Shots; OT = On Target; xG = Expected Goals

PASSES	Att	R	S%	PF%
1 María Pilar León	754	574	92	41
2 Alexia Putellas	665	635	83	40
3 Irene Paredes	664	530	92	30

Att = Attempted; R = Passes Received; S = Successful; PF = Pass Forward

CHANCE CREATION	A	KP	xA
1 Fridolina Rolfö	6	8	2.6
2 Caroline Graham Hansen	4	35	3.9
3 Patricia Guijarro	3	10	2.1

A = Assists; KP = Key Passes; xA = Expected Assists

DEFENDING	P	BR	TW	I
1 Alexia Putellas	163	70	6	7
2 Patricia Guijarro	151	64	9	13
3 Fridolina Rolfö	115	49	7	5

P = Pressures; BR = Balls Recovered; TW = Tackles Won; I = Interceptions

KEY FEATURES

- Compact 1-4-3-3 with fluent transition to 1-4-4-2 high defensive block
- High-tempo ball circulation based on technical expertise in all departments
- Full-backs active in dynamic wing play; 7 Graham Hansen with 1v1 skills, crosses on right
- Mobility, positional interchanging, penetrating runs, finishing by midfield trio
- Effective, well-coordinated collective high pressing; regains in final third
- Rapid-response defending; anticipation, interceptions, 1v1 skills, forward passing
- Clear playing philosophy implemented with concentration, self-belief



FC BAYERN MÜNCHEN



COACH

JENS SCHEUER



BORN: 12/10/1978, Offenburg (GER)
NATIONALITY: German
HEAD COACH: Since 01/07/2019
UEFA CLUB TROPHIES WON: 0

GROUP D

BEN
D 0-0

HAC
W 4-0

LYO
L 2-1

LYO
W 1-0

HAC
W 1-5

BEN
W 4-0

QUARTER-FINALS

SEMI-FINALS

FINAL

PSG
L 1-2

PSG
D 2-2*

Matches: Orange = home, white = away; grey = final; see page 5 for full club names

*After extra time

AVERAGES

POSSESSION

58%

Max. 67% v Benfica (a)
Min. 51% v Lyon (a)
UWCL rank: 3

POSSESSION POSITION

First third	34%
Middle third	50%
Attacking third	16%

512

PASSES ATTEMPTED

Max. 664 v Benfica (a)
Min. 423 v Lyon (a)
UWCL rank: 5

81%

PASS ACCURACY

Max. 87% v Benfica (a)
Min. 69% v Lyon (a)
UWCL rank: 5=

PASS DISTANCE*

Long	48 (9% of total)	UWCL rank: 4=
Medium	209 (41%)	UWCL rank: 5
Short	255 (50%)	UWCL rank: 3

PASSES PER DEFENSIVE ACTION**

Average	UWCL rank
9.5	3=

RECOVERIES IN ATTACKING THIRD

Average	UWCL rank
8.4	4

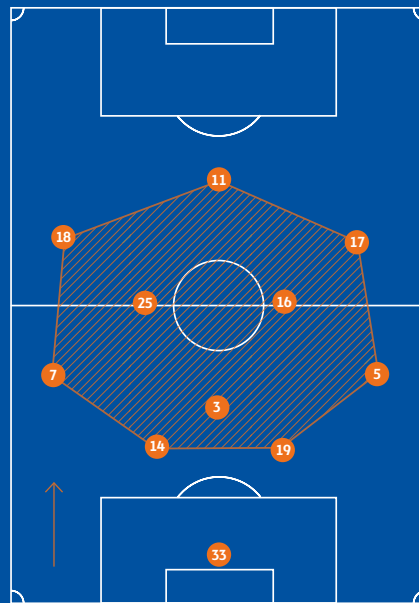
*Decimal points account for the extra/missing 1%

**Number of passes conceded in opposition and middle thirds divided by number of defensive actions. A lower PPDA indicates a higher degree of pressing.

SHAPE

Example: v Paris (h)

3 In possession | 3 Out of possession



SQUAD

App Min G A

GOALKEEPERS

1	Laura Benkarth	4	3	60
33	Janina Leitzig	4	3	90

DEFENDERS

4	Kristin Demann	2	2	6
5	Hanna Glas	8	5	9
8	Maximiliane Rall	4	1	31
14	Glóidís Viggósdóttir	7	5	7
19	Carina Wenninger	5	3	4
27	Marina Hegering	2	7	0
30	Carolin Simon	5	3	7
35	Julia Landenberger	1	1	6

MIDFIELDERS

3	Saki Kumagai	8	7	3	2
7	Giulia Gwinn	7	6	5	1
10	Linda Dallmann	6	3	5	2
12	Sydney Lohmann	2	1	4	7
16	Lina Magull	7	5	9	0
17	Klara Bühl	6	4	7	2
18	Viviane Asseyi	6	3	7	1
23	Karólína Lea Vilhjálmssdóttir	3	1	1	3
25	Sarah Zadrazil	7	5	3	2
80	Sofia Jakobsson	5	2	4	9

FORWARDS

6	Lineth Beerensteyn	7	3	5	1
9	Jovana Damnjanović	7	1	7	3
11	Lea Schüller	7	5	8	4

App = Appearances; Min = Minutes played; G = Goals; A = Assists

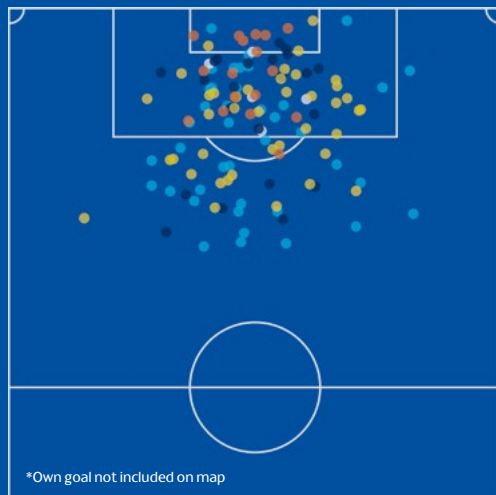
AVERAGE AGE

26.2

CARDS



ATTEMPTS



*Own goal not included on map

18 GOALS (1 own goal)
2.25 per match; UWCL rank: 5

15.1 EXPECTED GOALS (xG)
1.9 per match; UWCL rank: 5=

125 GOAL ATTEMPTS
15.6 per match; UWCL rank: 6

40 ON TARGET
5 per match; UWCL rank: 8



PLAYER STATISTICS

Where totals are equal, rank is decided by next value

GOALS	G	S	OT	xG	
1	Lea Schüller	4	22	9	3.2
2	Jovana Damnjanović	3	8	4	0.9
3	Klara Bühl	2	18	5	1.9

G = Goals; S = Shots; OT = On Target; xG = Expected Goals

PASSES	Att	R	S%	PF%	
1	Saki Kumagai	599	457	88	32
2	Glóidís Viggósdóttir	484	402	83	42
3	Lina Magull	425	317	87	33

Att = Attempted; R = Passes Received; S = Successful; PF = Pass Forward

CHANCE CREATION	A	KP	xA	
1	Klara Bühl	3	9	1.4
2=	Lea Schüller	1	7	0.7
2=	Carolin Simon	1	7	0.5

A = Assists; KP = Key Passes; xA = Expected Assists

DEFENDING	P	BR	TW	I	
1	Giulia Gwinn	148	51	10	12
2	Sarah Zadrazil	139	61	15	6
3	Saki Kumagai	125	64	8	18

P = Pressures; BR = Balls Recovered; TW = Tackles Won; I = Interceptions

KEY FEATURES

- 1-4-3-3 in attack; fast transitions to compact 1-4-2-3-1 or 1-4-1-4-1 defence
- Mix of short passing and vertical attacks/counters; full-backs high
- Fluent positional interchanging, combination play by three midfielders
- Penetrating wing play by 17 Bühl; good crosses, shots, set-play deliveries
- Fierce pressure on ball, frequent high regains after loss of possession
- Excellent shot-stopping, building from back by 33 Leitzig
- Well-organised unit with enterprising approach, strong team spirit



SL BENFICA



POR

COACH

ANDRÉ VALE



BORN: 03/08/1987, Lisbon (POR)
NATIONALITY: Portuguese
HEAD COACH: *
UEFA CLUB TROPHIES WON: 0

*Usually assistant coach to Filipa Patão but was head coach for UWCL



GROUP D	QUARTER-FINALS		SEMI-FINALS		FINAL
BAY D 0-0	LYO L 5-0	HAC L 0-1	HAC W 1-2	LYO L 0-5	BAY L 4-0

Matches: Orange = home, white = away; grey = final; see page 5 for full club names

AVERAGES

POSSESSION

43%

Max. 55% v Lyon (h)
Min. 33% v Bayern (h)
UWCL rank: 12

POSSESSION POSITION

First third 45%

Middle third 42%

Attacking third 13%

374

PASSES ATTEMPTED

Max. 514 v Lyon (h)
Min. 318 v Bayern (h)
UWCL rank: 12

75%

PASS ACCURACY

Max. 86% v Lyon (h)
Min. 66% v Bayern (h)
UWCL rank: 9=

PASS DISTANCE

		UWCL rank: 11=
Long	42 (11% of total)	UWCL rank: 11=
Medium	165 (44%)	UWCL rank: 11
Short	167 (45%)	UWCL rank: 13

PASSES PER DEFENSIVE ACTION**

Average	UWCL rank
14.6	11

RECOVERIES IN ATTACKING THIRD

Average	UWCL rank
3.5	15

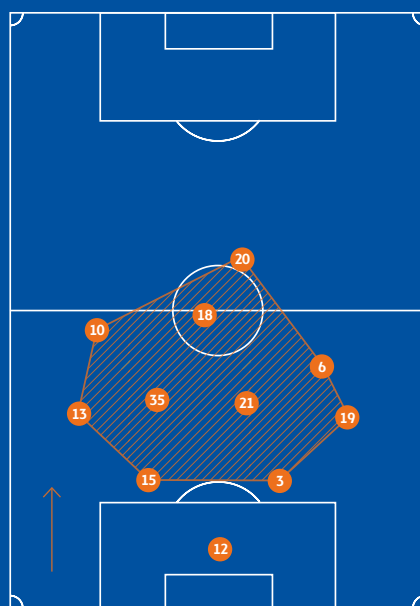
*Decimal points account for the extra/missing 1%

**Number of passes conceded in opposition and middle thirds divided by number of defensive actions. A lower PPDAs indicates a higher degree of pressing.

SHAPE

Example: v Lyon (a)

3 In possession

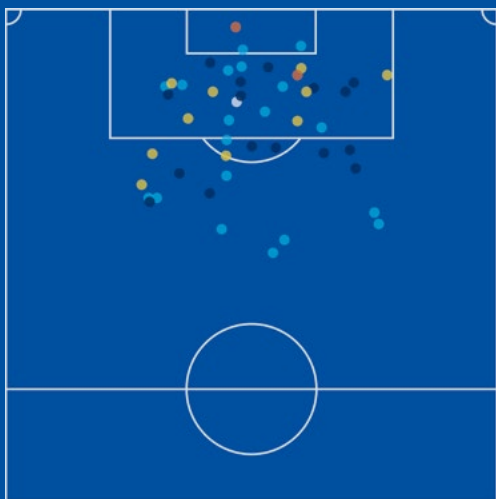


SQUAD

	App	Min	G	A
GOALKEEPERS				
12 Letícia	5	450		
39 Carolina Vilão	1	90		
DEFENDERS				
3 Ana Rita Seíça	6	469		
4 Sílvia Rebelo	1	65		
5 Matilde Fidalgo	1	1		
13 Lucía Alves	6	523		
14 Carolina Correia	1	6		
15 Carole Costa	6	540		
19 Catarina Amado	6	540	1	
MIDFIELDERS				
6 Andreia Faria	5	220		
10 Ana Vitória	5	387		
11 Maria Negrão	3	70		
16 Christy Ucheibe	6	279		
21 Pauleta	6	539		
28 Madalina Tatar	2	8		
35 Beatriz Cameirão	4	194		
FORWARDS				
7 Valéria Silva	6	273		
8 Marta Cintra	5	155		
9 Nycole Raysla	1	59		
18 Francisca Nazareth	6	532		1
20 Cloé Lacasse	6	538	1	
33 Lara Pintassilgo	1	2		

App = Appearances; Min = Minutes played; G = Goals; A = Assists

ATTEMPTS



2 GOALS
0.33 per match; UWCL rank: 12=

4.2 EXPECTED GOALS (xG)
0.7 per match; UWCL rank: 12=

48 GOAL ATTEMPTS
8 per match; UWCL rank: 12

18 ON TARGET
3 per match; UWCL rank: 11

GOALS	4%
SAVED	33%
BLOCKED	20%
WOODWORK	2%
OFF TARGET	41%

PLAYER STATISTICS

Where totals are equal, rank is decided by next value

GOALS	G	S	OT	xG
1 Cloé Lacasse	1	10	4	1.6
2 Catarina Amado	1	5	3	1.0
3 Francisca Nazareth	0	9	2	0.5

G = Goals; S = Shots; OT = On Target; xG = Expected Goals

PASSES	Att	R	S%	PF%
1 Carole Costa	264	201	78	48
2 Catarina Amado	250	199	72	38
3 Letícia	238	144	85	32

Att = Attempted; R = Passes Received; S = Successful; PF = Pass Forward

CHANCE CREATION	A	KP	xA
1 Francisca Nazareth	1	8	0.5
2 Catarina Amado	0	10	1.0
3 Lucía Alves	0	4	0.2

A = Assists; KP = Key Passes; xA = Expected Assists

DEFENDING	P	BR	TW	I
1 Cloé Lacasse	154	14	2	3
2 Pauleta	139	63	10	10
3 Catarina Amado	127	54	16	19

P = Pressures; BR = Balls Recovered; TW = Tackles Won; I = Interceptions

AVERAGE AGE
22.6

CARDS

11 0



Catarina Amado was one of two Benfica players to score



BREIDABLIK



COACH

ÀSMUNDUR ARNARSSON*



BORN: 14/03/1972, Húsavík (ISL)
NATIONALITY: Icelandic
HEAD COACH: Since 07/10/2021
UEFA CLUB TROPHIES WON: 0

*Vilhjálmur Kári Haraldsson was in charge for Matchday 1

GROUP B

PSG L 0-2	MAD L 5-0	KHA D 0-0	KHA L 0-2	MAD L 0-3	PSG L 6-0
--------------	--------------	--------------	--------------	--------------	--------------

QUARTER-FINALS

SEMI-FINALS

FINAL

Matches: Orange = home, white = away; grey = final; see page 5 for full club names

AVERAGES

POSSESSION

32%

Max. 49% v Kharkiv (h)
Min. 26% v Paris (h)
UWCL rank: 15

POSSESSION POSITION

First third 46%

Middle third 42%

Attacking third 12%

285

PASSES ATTEMPTED

Max. 400 v Kharkiv (h)
Min. 247 v Real Madrid (a)
UWCL rank: 15

62%

PASS ACCURACY

Max. 70% v Kharkiv (h)
Min. 53% v Real Madrid (h)
UWCL rank: 16

PASS DISTANCE*

Long	50 (18% of total)	UWCL rank: 3
Medium	110 (39%)	UWCL rank: 15
Short	125 (44%)	UWCL rank: 15

PASSES PER DEFENSIVE ACTION**

Average	UWCL rank
15.8	12

RECOVERIES IN ATTACKING THIRD

Average	UWCL rank
5.7	12

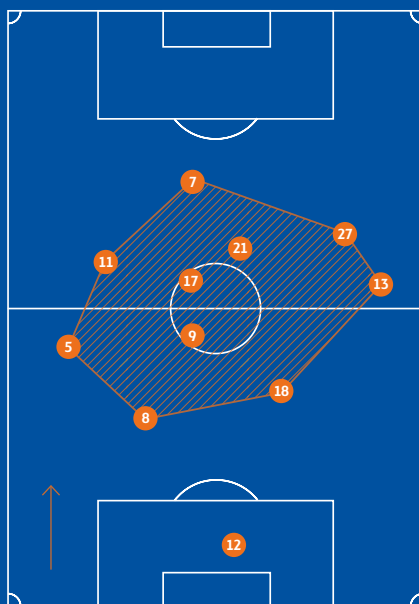
*Decimal points account for the extra/missing 1%

**Number of passes conceded in opposition and middle thirds divided by number of defensive actions. A lower PPDA indicates a higher degree of pressing.

SHAPE

Example: v Kharkiv (h)

3 In possession



SQUAD

App Min G A

GOALKEEPERS

12 Telma Ívarsdóttir 6 540

DEFENDERS

5 Hafurún Halldórsdóttir 6 511

8 Heiðís Lillyardóttir 6 540

13 Asta Árnadóttir 6 540

18 Kristín Dís Árnadóttir 6 540

MIDFIELDERS

9 Taylor Ziemer 6 536

11 Alexandra Soree 6 217

14 Karen Sigurgeirsdóttir 6 217

17 Karitas Tómasdóttir 6 528

21 Hildur Antonsdóttir 6 484

23 Vigdís Edda Friðriksdóttir 3 3

27 Selma Sól Magnúsdóttir 5 428

FORWARDS

7 Agla Maria Albertsdóttir 6 540

15 Vigdís Lilja Kristjánsdóttir 6 115

16 Tiffany McCarty 4 154

19 Birta Georgsdóttir 5 47

App = Appearances; Min = Minutes played; G = Goals; A = Assists

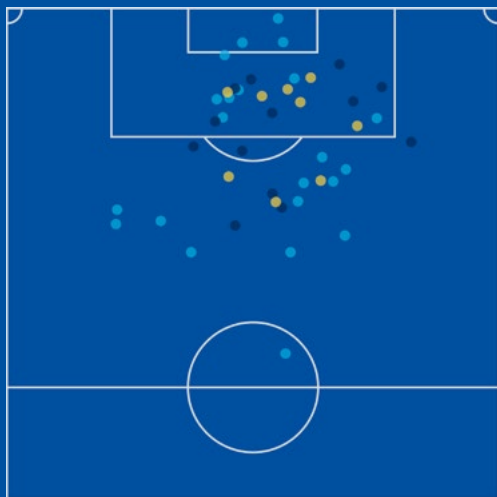
AVERAGE AGE

22.9

CARDS

6 0

ATTEMPTS



0

GOALS

0 per match; UWCL rank: 15=

4.0

EXPECTED GOALS (xG)

0.7 per match; UWCL rank: 12=

44

GOAL ATTEMPTS

7.3 per match; UWCL rank: 13

13

ON TARGET

2.2 per match; UWCL rank: 14=

GOALS	0%
SAVED	30%
BLOCKED	20%
WOODWORK	0%
OFF TARGET	50%

PLAYER STATISTICS

Where totals are equal, rank is decided by next value

GOALS

	G	S	OT	xG
1 Agla Maria Albertsdóttir	0	10	6	0.8
2 Hildur Antonsdóttir	0	8	2	0.9
3 Karitas Tómasdóttir	0	7	1	0.6

G = Goals; S = Shots; OT = On Target; xG = Expected Goals

PASSES

	Att	R	S%	PF%
1 Kristín Dís Árnadóttir	202	118	61	56
2 Heiðís Lillyardóttir	178	108	73	52
3 Taylor Ziemer	178	107	70	38

Att = Attempted; R = Passes Received; S = Successful; PF = Pass Forward

CHANCE CREATION

	A	KP	xA
1 Agla Maria Albertsdóttir	0	8	0.7
2 Karitas Tómasdóttir	0	4	0.1
3 Taylor Ziemer	0	3	0.4

A = Assists; KP = Key Passes; xA = Expected Assists

DEFENDING

	P	BR	TW	I
1 Karitas Tómasdóttir	181	42	11	16
2 Agla Maria Albertsdóttir	141	41	3	5
3 Asta Árnadóttir	124	28	6	9

P = Pressures; BR = Balls Recovered; TW = Tackles Won; I = Interceptions



Kristín Dís Árnadóttir attempted the most passes for Breidablik



CHELSEA FC



COACH

EMMA HAYES



BORN: 18/10/1976, London (ENG)
NATIONALITY: English
HEAD COACH: Since 01/08/2012
UEFA CLUB TROPHIES WON: 0



GROUP A

WOL D 3-3	JUV W 1-2	SER W 0-7	SER W 1-0	JUV D 0-0	WOL L 4-0
--------------	--------------	--------------	--------------	--------------	--------------

QUARTER-FINALS

SEMI-FINALS

FINAL

Matches: Orange = home, white = away; grey = final; see page 5 for full club names

AVERAGES

POSSESSION

63%

Max. 70% v Juventus (h)
Min. 46% v Wolfsburg (a)
UWCL rank: 2

POSSESSION POSITION

First third	23%
Middle third	54%
Attacking third	23%

546

PASSES ATTEMPTED
Max. 636 v Juventus (h)
Min. 340 v Wolfsburg (a)
UWCL rank: 2

80%

PASS ACCURACY
Max. 84% v Servette (a)
Min. 62% v Wolfsburg (a)
UWCL rank: 7

PASS DISTANCE*

Long	48 (9% of total)	UWCL rank: 4=
Medium	205 (37%)	UWCL rank: 7
Short	294 (54%)	UWCL rank: 2

PASSES PER DEFENSIVE ACTION**

Average	UWCL rank
7.9	1

RECOVERIES IN ATTACKING THIRD

Average	UWCL rank
9.8	3

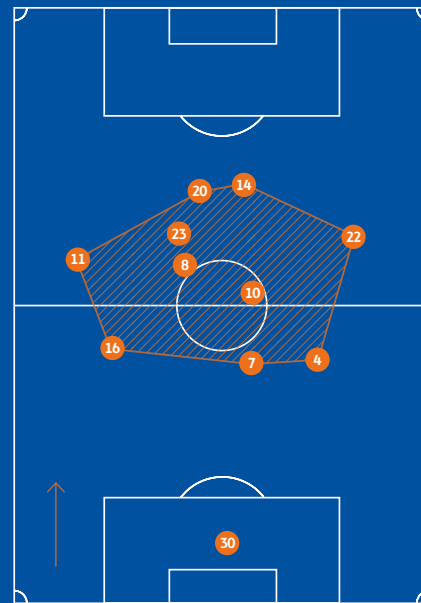
*Decimal points account for the extra/missing 1%

**Number of passes conceded in opposition and middle thirds divided by number of defensive actions. A lower PPDA indicates a higher degree of pressing.

SHAPE

Example: v Juventus (a)

In possession



SQUAD

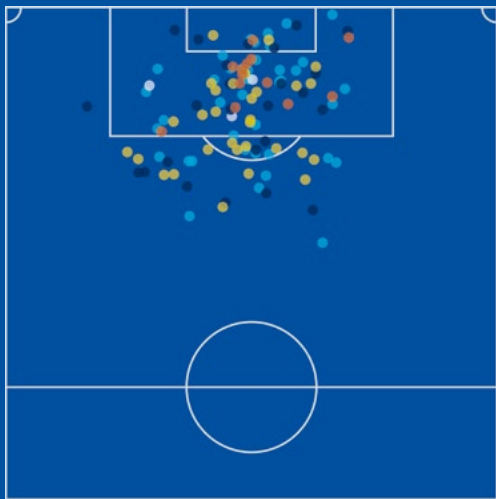
	App	Min	G	A
GOALKEEPERS				
1 Zecira Musovic	3	270		
30 Ann-Katrin Berger	3	270		
DEFENDERS				
3 Aniek Nouwen	1	39		
4 Millie Bright	6	540		1
7 Jess Carter	5	407		
16 Magdalena Eriksson	6	468		
25 Jonna Andersson	3	109		
29 Jorja Fox	1	33		
MIDFIELDERS				
5 Sophie Ingle	5	216		
8 Melanie Leupolz	6	393	1	2
10 So-Yun Ji	5	369		1
11 Guro Reiten	6	391		1
17 Jessie Fleming	5	168	1	1
18 Maren Mjelde	2	114		
21 Niamh Charles	4	154		
22 Erin Cuthbert	6	414		1
24 Drew Spence	1	90		
FORWARDS				
9 Bethany England	5	191		1
14 Fran Kirby	6	448	2	3
19 Lauren James	1	5		
20 Sam Kerr	6	511	4	2
23 Pernille Harder	4	340		2

App = Appearances; Min = Minutes played; G = Goals; A = Assists

AVERAGE AGE
26.4

CARDS
4 0

ATTEMPTS



13 GOALS
2.17 per match; UWCL rank: 6

13.2 EXPECTED GOALS (xG)
2.2 per match; UWCL rank: 4

113 GOAL ATTEMPTS
18.8 per match; UWCL rank: 2

38 ON TARGET
6.3 per match; UWCL rank: 6

GOALS	11%
SAVED	21%
BLOCKED	26%
WOODWORK	3%
OFF TARGET	38%

PLAYER STATISTICS

Where totals are equal, rank is decided by next value

GOALS	G	S	OT	xG
1 Sam Kerr	4	20	9	3.9
2 Fran Kirby	2	14	7	1.9
3 Pernille Harder	2	11	3	1.1

G = Goals; S = Shots; OT = On Target; xG = Expected Goals

PASSES	Att	R	S%	PF%
1 Millie Bright	482	377	80	49
2 Magdalena Eriksson	390	288	80	47
3 So-Yun Ji	351	266	87	27

Att = Attempted; R = Passes Received; S = Successful; PF = Pass Forward

CHANCE CREATION	A	KP	xA
1 Fran Kirby	3	5	1.7
2 Sam Kerr	2	10	1.3
3 Melanie Leupolz	2	2	1.8

A = Assists; KP = Key Passes; xA = Expected Assists

DEFENDING	P	BR	TW	I
1 Melanie Leupolz	128	26	8	9
2 Fran Kirby	98	23	0	1
3 Pernille Harder	92	20	6	2

P = Pressures; BR = Balls Recovered; TW = Tackles Won; I = Interceptions



Sam Kerr was Chelsea's top scorer with four goals



BK HÄCKEN



COACH

ROBERT VILAHAMN*



BORN: 02/01/1983, Skalhamn (SWE)
NATIONALITY: Swedish
HEAD COACH: Since 22/10/2021
UEFA CLUB TROPHIES WON: 0

*Mats Gren was in charge for Matchdays 1 and 2

GROUP D

LYO L 0-3	BAY L 4-0	BEN W 0-1	BEN L 1-2	BAY L 1-5	LYO L 4-0
--------------	--------------	--------------	--------------	--------------	--------------

QUARTER-FINALS

SEMI-FINALS

FINAL

Matches: Orange = home, white = away; grey = final; see page 5 for full club names

AVERAGES

POSSESSION

46%

Max. 57% v Benfica (a)
Min. 39% v Lyon (h)
UWCL rank: 10

POSSESSION POSITION

First third	41%
Middle third	44%
Attacking third	15%

421

PASSES ATTEMPTED

Max. 518 v Benfica (a)
Min. 337 v Lyon (h)
UWCL rank: 10

74%

PASS ACCURACY

Max. 78% v Benfica (a)
Min. 66% v Lyon (h)
UWCL rank: 11=

PASS DISTANCE*

Long	51 (12% of total)	UWCL rank: 1=
Medium	168 (40%)	UWCL rank: 10
Short	203 (48%)	UWCL rank: 10

PASSES PER DEFENSIVE ACTION**

Average	UWCL rank
10.3	6

RECOVERIES IN ATTACKING THIRD

Average	UWCL rank
6	10

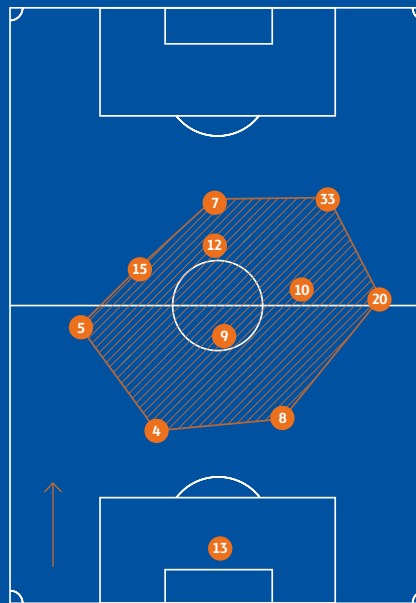
*Decimal points account for the extra/missing 1%

**Number of passes conceded in opposition and middle thirds divided by number of defensive actions. A lower PPDA indicates a higher degree of pressing.

SHAPE

Example: v Benfica (a)

3 In possession



SQUAD

App Min G A

GOALKEEPERS

13 Jennifer Falk 6 540

DEFENDERS

3 Beata Kollmats 4 249

4 Emma Kullberg 3 270

5 Lotta Ökvist 6 450

8 Luna Gewitz 6 540

17 Anna Csiki 3 147

20 Hanna Wijk 4 359

26 Julia Karlenäs 5 205

MIDFIELDERS

6 Dylan Holmes 1 27

9 Filippa Curmark 6 540

10 Elin Rubensson 6 540 2

15 Julia Zigiotti Olme 3 243

23 Milica Mijatović 3 90

FORWARDS

7 Stina Blackstenius** 5 419 1

12 Stine Larsen 6 485 1

21 Dijkstra Zomers 3 36

29 Mille Gejl 6 270

33 Johanna Rytting Kaneryd 6 530

**Stina Blackstenius also played for Arsenal

App = Appearances; Min = Minutes played; G = Goals; A = Assists

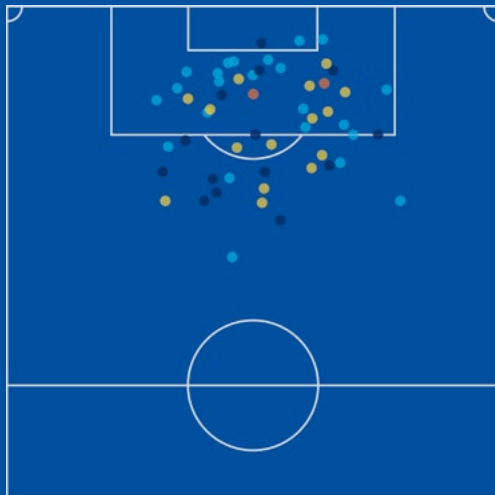
AVERAGE AGE

25.3

CARDS

7 0

ATTEMPTS



3

GOALS

0.50 per match; UWCL rank: 11

5.5

EXPECTED GOALS (xG)

0.9 per match; UWCL rank: 11

55

GOAL ATTEMPTS

9.2 per match; UWCL rank: 11

17

ON TARGET

2.8 per match; UWCL rank: 12

GOALS	5%
SAVED	25%
BLOCKED	27%
WOODWORK	0%
OFF TARGET	42%

PLAYER STATISTICS

Where totals are equal, rank is decided by next value

GOALS

	G	S	OT	xG
1 Elin Rubensson	2	6	4	1.7
2 Stina Blackstenius	1	8	2	0.9
3 Johanna Rytting Kaneryd	0	9	5	0.4

G = Goals; S = Shots; OT = On Target; xG = Expected Goals

PASSES

	Att	R	S%	PF%
1 Elin Rubensson	345	255	73	45
2 Filippa Curmark	315	212	79	37
3 Luna Gewitz	283	220	83	50

Att = Attempted; R = Passes Received; S = Successful; PF = Pass Forward

CHANCE CREATION

	A	KP	xA
1 Stine Larsen	1	6	0.9
2 Stina Blackstenius	0	6	0.6
3 Johanna Rytting Kaneryd	0	6	0.5

A = Assists; KP = Key Passes; xA = Expected Assists

DEFENDING

	P	BR	TW	I
1 Johanna Rytting Kaneryd	146	45	10	9
2 Filippa Curmark	143	66	4	19
3 Elin Rubensson	134	50	6	11

P = Pressures; BR = Balls Recovered; TW = Tackles Won; I = Interceptions



Elin Rubensson scored two of Häcken's three goals



TSG 1899 HOFFENHEIM



COACH

GABOR GALLAI



BORN: 21/08/1979, Hoyerswerda (GER)
NATIONALITY: German
HEAD COACH: Since 01/07/2020
UEFA CLUB TROPHIES WON: 0



GROUP C

HER	ARS	BAR	BAR	HER	ARS	QUARTER-FINALS	SEMI-FINALS	FINAL
W 5-0	L 4-0	L 4-0	L 0-5	W 1-2	W 4-1			

Matches: Orange = home, white = away; grey = final; see page 5 for full club names

AVERAGES

POSSESSION

51%

Max. 77% v HB Køge (h)
Min. 30% v Barcelona (a)
UWCL rank: 8=

POSSESSION POSITION

First third 42%

Middle third 46%

Attacking third 12%

526

PASSES ATTEMPTED

Max. 788 v HB Køge (h)
Min. 309 v Barcelona (a)
UWCL rank: 3

83%

PASS ACCURACY

Max. 89% v HB Køge (a)
Min. 71% v Barcelona (a)
UWCL rank: 3

PASS DISTANCE*

Long	28 (5% of total)	UWCL rank: 16
Medium	251 (48%)	UWCL rank: 1=
Short	248 (47%)	UWCL rank: 5

PASSES PER DEFENSIVE ACTION**

Average	UWCL rank
17.1	15

RECOVERIES IN ATTACKING THIRD

Average	UWCL rank
6.5	8

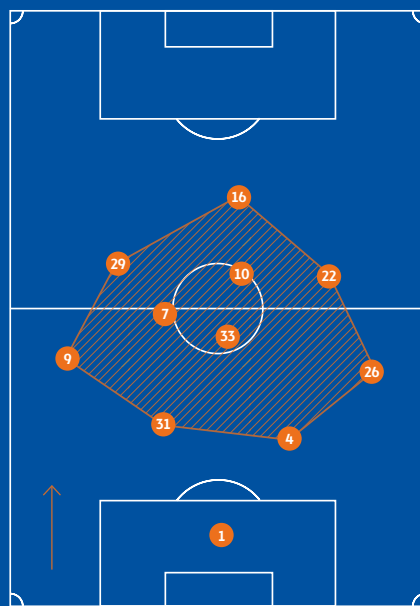
*Decimal points account for the extra/missing 1%

**Number of passes conceded in opposition and middle thirds divided by number of defensive actions. A lower PPDA indicates a higher degree of pressing.

SHAPE

Example: v Arsenal (a)

3 In possession

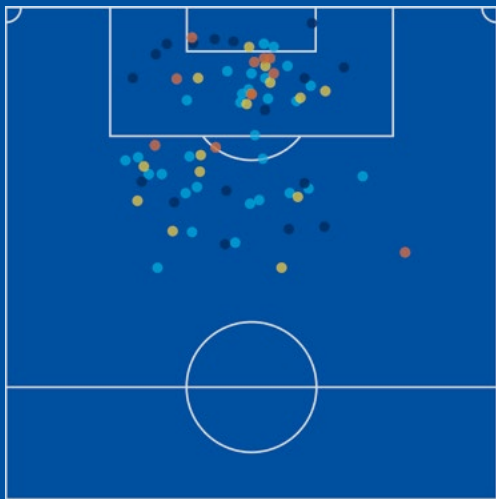


SQUAD

	App	Min	G	A
GOALKEEPERS				
1 Martina Tufekovic	6	540		
DEFENDERS				
4 Michaela Specht	6	540		
5 Luana Bühler	4	348	1	
9 Katharina Naschenweng	6	531	1	
14 Celina Degen	2	17		
19 Judith Steinert	6	77		
22 Sarai Linder	6	278		1
26 Laura Wienroither*	6	477		
31 Jana Feldkamp	6	497		
MIDFIELDERS				
7 Chantal Hagel	6	461	2	
10 Gia Corley	6	322	1	1
17 Franziska Harsch	6	98		
29 Jule Brand	5	441	1	1
33 Fabienne Dongus	6	454		1
FORWARDS				
6 Tine De Caigny	6	391	2	1
11 Petra Kocsán	1	7		
16 Nicole Billa	6	416	3	
27 Vanessa Leimenstoll	5	45		1

*Laura Wienroither also played for Arsenal

ATTEMPTS



11 GOALS
1.83 per match; UWCL rank: 10

10.2 EXPECTED GOALS (xG)
1.7 per match; UWCL rank: 7=

72 GOAL ATTEMPTS
12 per match; UWCL rank: 9

29 ON TARGET
4.8 per match; UWCL rank: 9

GOALS	15%
SAVED	23%
BLOCKED	19%
WOODWORK	1%
OFF TARGET	41%

App = Appearances; Min = Minutes played; G = Goals; A = Assists

AVERAGE AGE

23.2

CARDS

2 0

PLAYER STATISTICS

Where totals are equal, rank is decided by next value

GOALS	G	S	OT	xG
1 Nicole Billa	3	10	7	4.3
2 Chantal Hagel	2	10	5	1.0
3 Tine De Caigny	2	7	2	1.1

G = Goals; S = Shots; OT = On Target; xG = Expected Goals

CHANCE CREATION	A	KP	xA
1 Tine De Caigny	1	5	1.6
2 Jule Brand	1	5	0.8
3 Gia Corley	1	4	0.8

A = Assists; KP = Key Passes; xA = Expected Assists

PASSES	Att	R	S%	PF%
1 Michaela Specht	552	434	90	26
2 Luana Bühler	349	309	93	37
3 Jana Feldkamp	334	262	88	27

Att = Attempted; R = Passes Received; S = Successful; PF = Pass Forward

DEFENDING	P	BR	TW	I
1 Jule Brand	94	26	8	5
2 Laura Wienroither	83	27	8	8
3 Fabienne Dongus	82	39	5	7

P = Pressures; BR = Balls Recovered; TW = Tackles Won; I = Interceptions



Nicole Billa's three goals came from seven shots on target



JUVENTUS



COACH

JOE MONTEMURRO



BORN: 13/09/1969, Melbourne (AUS)
NATIONALITY: Australian
HEAD COACH: Since 08/06/2021
UEFA CLUB TROPHIES WON: 0

GROUP A				QUARTER-FINALS				SEMI-FINALS		FINAL	
SER W 0-3	CHE L 1-2	WOL D 2-2	WOL W 0-2	CHE D 0-0	SER W 4-0	LYO W 2-1	LYO L 3-1				

Matches: Orange = home, white = away; grey = final; see page 5 for full club names

AVERAGES

POSSESSION

42%

Max. 56% v Servette (h)
Min. 30% v Chelsea (a)
UWCL rank: 13

POSSESSION POSITION

First third	45%
Middle third	44%
Attacking third	12%

344

PASSES ATTEMPTED

Max. 497 v Servette (h)
Min. 265 v Chelsea (a)
UWCL rank: 13

72%

PASS ACCURACY

Max. 81% v Servette (a)
Min. 59% v Chelsea (a)
UWCL rank: 13

PASS DISTANCE*

Long	42 (12% of total)	UWCL rank: 11=
Medium	134 (39%)	UWCL rank: 13
Short	169 (49%)	UWCL rank: 12

PASSES PER DEFENSIVE ACTION**

Average	UWCL rank
15.9	13

RECOVERIES IN ATTACKING THIRD

Average	UWCL rank
6.4	9

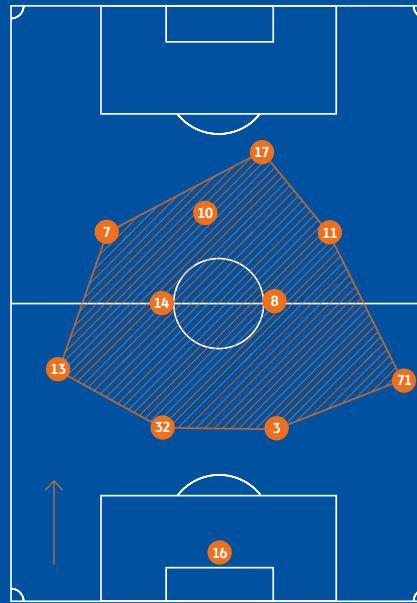
*Decimal points account for the extra/missing 1%

**Number of passes conceded in opposition and middle thirds divided by number of defensive actions. A lower PPDA indicates a higher degree of pressing.

SHAPE

Example: v Lyon (a)

3 In possession



SQUAD

App Min G A

GOALKEEPERS

16 Pauline Peyraud-Magnin 8 720

DEFENDERS

2 Tuija Hyryrynen	4	58	
3 Sara Gama	5	450	
5 Amanda Nildén	5	36	
12 Matilde Lundorf	7	517	
13 Lisa Boattin	8	695	2
23 Cecilia Salvai	6	522	
32 Linda Sembrant	2	180	
71 Martina Lenzi	6	433	

MIDFIELDERS

7 Valentina Cernoia	6	402	1	1
8 Martina Rosucci	8	655	1	
14 Sofie Junge Pedersen	8	640		
15 Julia Grosso	1	66		
19 Annahita Zamanian	4	178		
21 Arianna Caruso	8	360	1	2

FORWARDS

9 Andrea Stašková	8	170	2	2
10 Cristiana Girelli	7	565	5	1
11 Barbara Bonansea	7	512	1	2
17 Lina Hurtig	8	583	2	
22 Agnese Bonfantini	8	175	2	
29 Elisa Pfattner	1	3		

App = Appearances; Min = Minutes played; G = Goals; A = Assists

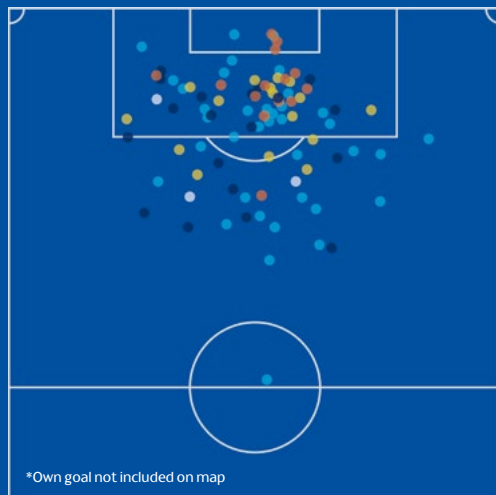
AVERAGE AGE

26.4

CARDS

13 **0**

ATTEMPTS



15 GOALS (1 own goal)
1.88 per match; UWCL rank: 7=

12.7 EXPECTED GOALS (xG)
1.6 per match; UWCL rank: 10

90 GOAL ATTEMPTS
11.3 per match; UWCL rank: 10

34 ON TARGET
4.3 per match; UWCL rank: 10

GOALS	15%
SAVED	22%
BLOCKED	17%
WOODWORK	3%
OFF TARGET	43%

PLAYER STATISTICS

Where totals are equal, rank is decided by next value

GOALS	G	S	OT	xG
1 Cristiana Girelli	5	14	7	3.7
2 Lina Hurtig	2	11	5	2.5
3 Andrea Stašková	2	9	6	2.3

G = Goals; S = Shots; OT = On Target; xG = Expected Goals

PASSES	Att	R	S%	PF%
1 Pauline Peyraud-Magnin	339	211	73	43
2 Lisa Boattin	299	206	67	51
3 Cecilia Salvai	251	149	77	45

Att = Attempted; R = Passes Received; S = Successful; PF = Pass Forward

CHANCE CREATION	A	KP	xA
1 Lisa Boattin	2	9	1.0
2 Barbara Bonansea	2	4	1.3
3 Andrea Stašková	2	2	0.4

A = Assists; KP = Key Passes; xA = Expected Assists

DEFENDING	P	BR	TW	I
1 Sofie Junge Pedersen	183	68	5	10
2 Martina Rosucci	154	48	8	10
3 Lisa Boattin	105	73	8	21

P = Pressures; BR = Balls Recovered; TW = Tackles Won; I = Interceptions

KEY FEATURES

- Variations on 1-4-2-3-1 with two deep-lying controlling midfielders
- Excellent defensive organisation; ball-winning in areas conducive to counters
- Tried to build through thirds, but direct back-to-front play when pressed
- Clever combinations in final third; positional rotations in middle-to-front play
- Conservative attacking support by full-backs; rarely moving ahead of ball
- Strong centre-backs 3 Gama, 32 Sembrant supplying leadership qualities
- Well-planned set plays; competitive attitude, team ethic, mental strength



WFC KHARKIV



COACH

VALENTYNA KOTYK



BORN: 08/01/1978, Bilyi Kolodiaz (UKR)
NATIONALITY: Ukrainian
HEAD COACH: Since 05/12/2017
UEFA CLUB TROPHIES WON: 0



GROUP B

MAD	PSG	BRE	BRE	PSG	MAD
L 0-1	L 5-0	D 0-0	W 0-2	L 0-6	L 3-0

QUARTER-FINALS

SEMI-FINALS

FINAL

Matches: Orange = home, white = away; grey = final; see page 5 for full club names

AVERAGES

POSSESSION

45%

Max. 64% v Breidablik (h)
Min. 30% v Real Madrid (h)
UWCL rank: 11

POSSESSION POSITION

First third	44%
Middle third	47%
Attacking third	9%

379

PASSES ATTEMPTED

Max. 512 v Breidablik (h)
Min. 265 v Real Madrid (h)
UWCL rank: 11

74%

PASS ACCURACY

Max. 80% v Paris (h)
Min. 62% v Real Madrid (h)
UWCL rank: 11

PASS DISTANCE*

Long	34 (9% of total)	UWCL rank: 14=
Medium	154 (41%)	UWCL rank: 12
Short	192 (51%)	UWCL rank: 11

PASSES PER DEFENSIVE ACTION**

Average	UWCL rank
14.2	10

RECOVERIES IN ATTACKING THIRD

Average	UWCL rank
5	13

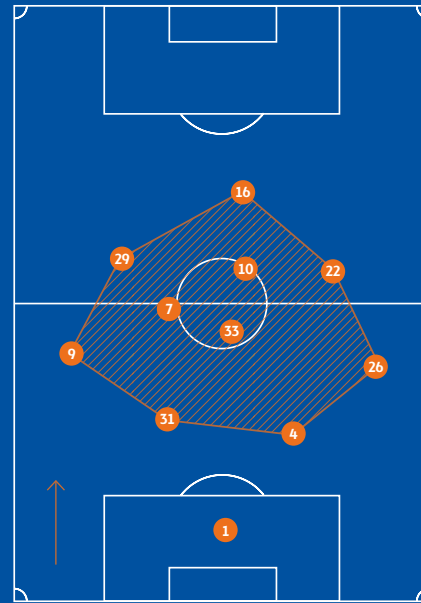
*Decimal points account for the extra/missing 1%

**Number of passes conceded in opposition and middle thirds divided by number of defensive actions. A lower PPDAs indicates a higher degree of pressing.

SHAPE

Example: v Breidablik (a)

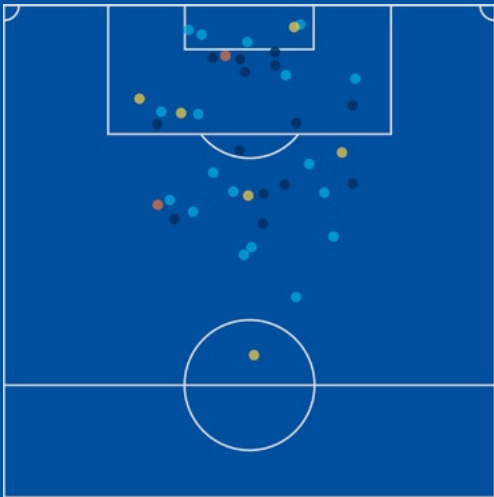
3 In possession



SQUAD

	App	Min	G	A
GOALKEEPERS				
23 Gamze Yaman	5	450		
31 Maria Svidunovich	1	90		
DEFENDERS				
3 Kristine Aleksanyan	6	522		
6 Olga Basanska	6	475		
15 Solomiia Kupiak	3	18		
16 Anastasiya Voronina	5	380		
22 Lyubov Shmatko	6	540		
MIDFIELDERS				
5 Nadiia Khavanska	3	149		
8 Olha Boichenko	5	440		
9 Anna Petryk	6	506		
10 Dajana Spasojević	3	56		
20 Iryna Kochnyeva	4	142		
55 Yuliia Shevchuk	6	508	1	
FORWARDS				
11 Birgül Sadıkoğlu	6	416		
17 Daria Apanaschenko	6	526		
77 Olha Ovdychuk	6	540	1	1
88 Ganna Voronina	6	182		

ATTEMPTS



2 GOALS
0.33 per match; UWCL rank: 12=

4.2 EXPECTED GOALS (xG)
0.7 per match; UWCL rank: 12=

40 GOAL ATTEMPTS
6.7 per match; UWCL rank: 14

16 ON TARGET
2.7 per match; UWCL rank: 13

GOALS	5%
SAVED	35%
BLOCKED	15%
WOODWORK	0%
OFF TARGET	45%

App = Appearances; Min = Minutes played; G = Goals; A = Assists

AVERAGE AGE
26.9

CARDS

11 0

PLAYER STATISTICS

Where totals are equal, rank is decided by next value

GOALS	G	S	OT	xG
1 Olha Ovdychuk	1	10	4	0.6
2 Yuliia Shevchuk	1	5	1	0.6
3 Olha Boichenko	0	8	4	1.2

G = Goals; S = Shots; OT = On Target; xG = Expected Goals

CHANCE CREATION	A	KP	xA
1 Olha Ovdychuk	1	5	1.1
2 Anna Petryk	0	6	0.4
3 Olha Boichenko	0	4	0.4

A = Assists; KP = Key Passes; xA = Expected Assists

PASSES	Att	R	S%	PF%
1 Lyubov Shmatko	340	228	80	49
2 Daria Apanaschenko	307	216	78	42
3 Anna Petryk	231	162	69	38

Att = Attempted; R = Passes Received; S = Successful; PF = Pass Forward

DEFENDING	P	BR	TW	I
1 Anna Petryk	124	61	7	7
2 Olha Ovdychuk	105	35	2	2
3 Yuliia Shevchuk	102	38	3	8

P = Pressures; BR = Balls Recovered; TW = Tackles Won; I = Interceptions



Anna Petryk led the way defensively for Kharkiv



HB KØGE



COACH

SØREN RANDA-BOLDT*

BORN: 04/10/1971, Copenhagen (DEN)
NATIONALITY: Danish
HEAD COACH: Since 01/07/2021
UEFA CLUB TROPHIES WON: 0

*Kim Daugaard Hansen was in charge for Matchday 6

GROUP C

HOF
L 5-0**BAR**
L 0-2**ARS**
L 1-5**ARS**
L 3-0**HOF**
L 1-2**BAR**
L 5-0

QUARTER-FINALS

SEMI-FINALS

FINAL

Matches: Orange = home, white = away; grey = final; see page 5 for full club names

AVERAGES

POSSESSION

24%

Max. 33% v Hoffenheim (h)
 Min. 18% v Barcelona (h)
 UWCL rank: 16

POSSESSION POSITION

First third 48%

Middle third 42%

Attacking third 10%

236

PASSES ATTEMPTED

Max. 363 v Hoffenheim (h)
 Min. 187 v Barcelona (h)
 UWCL rank: 16

65%

PASS ACCURACY

Max. 81% v Hoffenheim (h)
 Min. 51% v Barcelona (a)
 UWCL rank: 15

PASS DISTANCE*

Distance	Percentage	UWCL rank
Long	51 (22% of total)	16
Medium	92 (39%)	16
Short	93 (39%)	16

PASSES PER DEFENSIVE ACTION**

Metric	Average	UWCL rank
Passes per Defensive Action	27.1	16

RECOVERIES IN ATTACKING THIRD

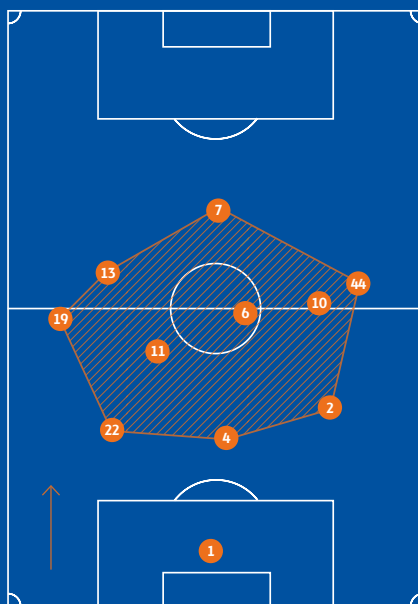
Metric	Average	UWCL rank
Recoveries in Attacking Third	2.3	16

*Decimal points account for the extra/missing 1%

**Number of passes conceded in opposition and middle thirds divided by number of defensive actions. A lower PPDA indicates a higher degree of pressing.

SHAPE

Example: v Hoffenheim (h)

 3 In possession


SQUAD

App Min G A

GOALKEEPERS

1 Kaylan Marcckese 6 540

DEFENDERS

2 Maria Uhr Nielsen 2 134

3 Julie Nowak 2 4

4 Selma Svendsen 6 540

5 Ari Romero 2 23

8 Laura Pedersen 5 450

19 Signe Markvardsen 6 493

22 Isabella Obaze 6 540

44 Emma Færge 6 525

MIDFIELDERS

6 Kelly Fitzgerald 5 371 1

11 Sarah Jankovska 6 435

14 Lauren Sajewich 4 253

15 Cilje Sophia Ostenfeld 1 14

FORWARDS

7 Kyra Carusa 6 539 1

9 Sofie Hornemann 4 17

10 Maddie Pokorny 6 498 1

13 Cecilie Fløe Nielsen 6 492

20 Cornelia Kramer 4 72

App = Appearances; Min = Minutes played; G = Goals; A = Assists

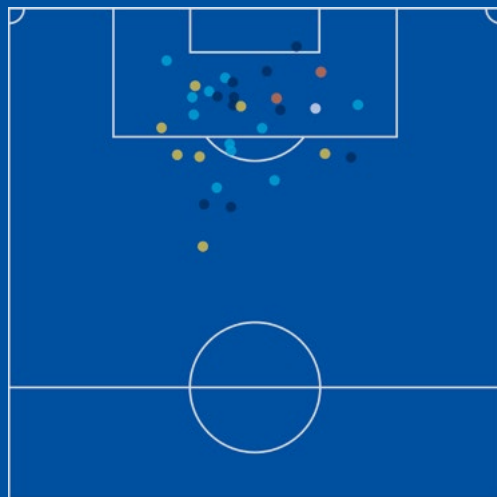
AVERAGE AGE

22.6

CARDS

2 0

ATTEMPTS

**2**

GOALS

0.33 per match; UWCL rank: 12=

4.1

EXPECTED GOALS (xG)

0.7 per match; UWCL rank: 12=

31

GOAL ATTEMPTS

5.2 per match; UWCL rank: 16

13

ON TARGET

2.2 per match; UWCL rank: 14=



PLAYER STATISTICS

Where totals are equal, rank is decided by next value

GOALS

Rank	Name	G	S	OT	xG
1	Kyra Carusa	1	11	5	1.6
2	Maddie Pokorny	1	3	2	0.7
3	Cecilie Fløe Nielsen	0	6	2	1.0

G = Goals; S = Shots; OT = On Target; xG = Expected Goals

PASSES

Rank	Name	Att	R	S%	PF%
1	Kaylan Marcckese	199	63	54	77
2	Isabella Obaze	143	94	80	51
3	Selma Svendsen	121	72	71	40

Att = Attempted; R = Passes Received; S = Successful; PF = Pass Forward

CHANCE CREATION

Rank	Name	A	KP	xA
1	Kelly Fitzgerald	1	2	0.4
2=	Emma Færge	0	3	0.2
2=	Cecilie Fløe Nielsen	0	3	0.2

A = Assists; KP = Key Passes; xA = Expected Assists

DEFENDING

Rank	Name	P	BR	TW	I
1	Cecilie Fløe Nielsen	140	34	7	9
2	Kyra Carusa	114	22	4	6
3	Sarah Jankovska	105	32	4	14

P = Pressures; BR = Balls Recovered; TW = Tackles Won; I = Interceptions



Goalkeeper Kaylan Marcckese attempted most passes in the HB Køge squad



OLYMPIQUE LYONNAIS



COACH

SONIA BOMPASTOR



BORN: 08/06/1980, Blois (FRA)
NATIONALITY: French
HEAD COACH: Since 27/04/2021
UEFA CLUB TROPHIES WON: 1



GROUP D			QUARTER-FINALS			SEMI-FINALS		FINAL		
HAC W 0-3	BEN W 5-0	BAY W 2-1	BAY L 1-0	BEN W 0-5	HAC W 4-0	JUV L 2-1	JUV W 3-1	PSG W 3-2	PSG W 1-2	BAR W 3-1

Matches: Orange = home, white = away; grey = final; see page 5 for full club names

AVERAGES

POSSESSION

51%

Max. 62% v Benfica (h)
Min. 38% v Paris (a)
UWCL rank: 8=

POSSESSION POSITION

First third 27%

Middle third 51%

Attacking third 22%

426

PASSES ATTEMPTED

Max. 555 v Håcken (h)
Min. 293 v Paris (a)
UWCL rank: 9

79%

PASS ACCURACY

Max. 87% v Benfica (h)
Min. 70% v Paris (a)
UWCL rank: 8

PASS DISTANCE*

Long	43 (10% of total)	UWCL rank: 10
Medium	171 (40%)	UWCL rank: 9
Short	212 (50%)	UWCL rank: 9

PASSES PER DEFENSIVE ACTION**

Average	UWCL rank
9.5	3=

RECOVERIES IN ATTACKING THIRD

Average	UWCL rank
11.1	2

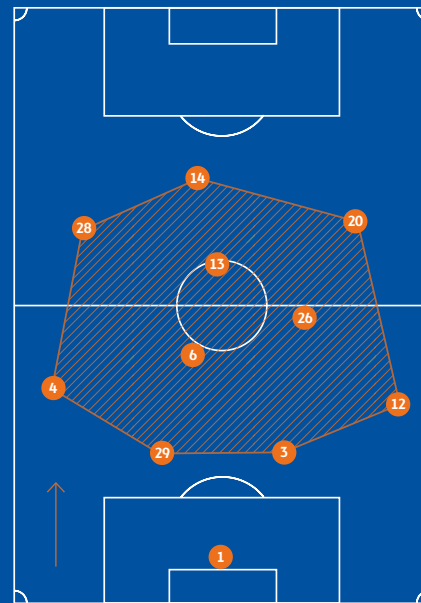
*Decimal points account for the extra/missing 1%

**Number of passes conceded in opposition and middle thirds divided by number of defensive actions. A lower PPDA indicates a higher degree of pressing.

SHAPE

Example: v Barcelona (n)

3 In possession



SQUAD

	Matches	W	D	L	Win%
UEFA Women's Champions League (Group stage to final)	11	9	0	2	82%
European club competition (including qualifying)	13	11	0	2	85%

GOALKEEPERS

	App	Min	G	A
1 Christiane Endler	10	900		
16 Sarah Bouhaddi	1	90		

	App	Min	G	A
2 Grace Kazadi	1	14		
3 Wendie Renard	7	593	3	
4 Selma Bacha	10	862		9
5 Perle Morroni	8	450		
12 Ellie Carpenter	10	751		
18 Alice Sombath	2	82		
21 Kadeisha Buchanan	11	890	2	
23 Janice Cayman	9	385	2	
29 Griedge Mbock Bathy	8	575	1	

MIDFIELDERS

	App	Min	G	A
6 Amandine Henry	11	924	3	
8 Sara Bjork Gunnarsdóttir	1	3		
10 Dzszenifer Marozsan	1	14		
11 Damaris Egurrola	7	400		
17 Daniëlle van de Donk	3	258	1	1
20 Delphine Cascarino	11	773	3	
22 Sally Julini	1	12		
25 Ines Nora Benyahia	2	8		
26 Lindsey Horan	5	374	1	
31 Laurine Baga	1	12		

FORWARDS

	App	Min	G	A
9 Eugénie Le Sommer	3	52		
13 Catarina Macario	11	844	8	2
14 Ada Hegerberg	10	626	6	2
19 Emelyne Laurent	6	90		
24 Signe Bruun	6	197	1	
28 Melvine Malard	11	683	3	3

App = Appearances; Min = Minutes played; G = Goals; A = Assists

AVERAGE AGE

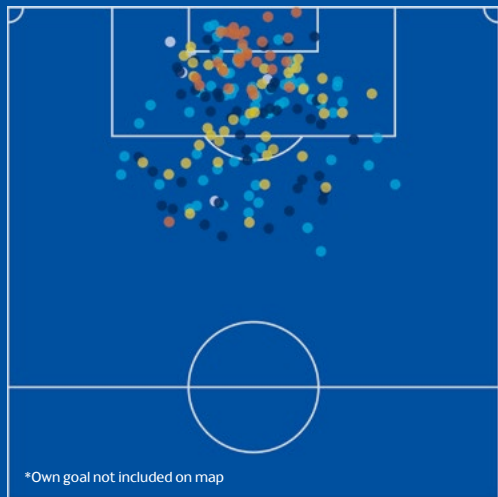
25.6

CARDS

15 1

Sent off: Carpenter v Juventus (a)

ATTEMPTS



31 GOALS (1 own goal)
2.82 per match; UWCL rank: 3

25.3 EXPECTED GOALS (xG)
2.3 per match; UWCL rank: 3

183 GOAL ATTEMPTS
16.6 per match; UWCL rank: 5

76 ON TARGET
6.9 per match; UWCL rank: 3

GOALS	16%
SAVED	24%
BLOCKED	20%
WOODWORK	3%
OFF TARGET	37%

*Own goal not included on map

PLAYER STATISTICS

Where totals are equal, rank is decided by next value

GOALS	G	S	OT	xG
1 Catarina Macario	8	34	18	5.8
2 Ada Hegerberg	6	25	11	3.7
3 Melvine Malard	3	26	8	3.4

G = Goals; S = Shots; OT = On Target; xG = Expected Goals

PASSES	Att	R	S%	PF%
1 Kadeisha Buchanan	511	351	86	40
2 Amandine Henry	489	354	81	34
3 Selma Bacha	394	330	80	35

Att = Attempted; R = Passes Received; S = Successful; PF = Pass Forward

CHANCE CREATION	A	KP	xA
1 Selma Bacha	9	25	3.4
2 Delphine Cascarino	3	18	2.3
3 Melvine Malard	3	5	1.7

A = Assists; KP = Key Passes; xA = Expected Assists

DEFENDING	P	BR	TW	I
1 Catarina Macario	201	62	13	7
2 Amandine Henry	193	97	12	14
3 Selma Bacha	145	79	15	16

P = Pressures; BR = Balls Recovered; TW = Tackles Won; I = Interceptions

KEY FEATURES

- 1-4-2-3-1 with two holding midfielders; 1-4-2-4 mid-block defending
- 13 Macario the free electron in attack behind striker 14 Hegerberg
- Fast defence-to-attack transitions, often centre-backs to striker
- Penetrating wing play, notably 20 Cascarino on right, with full-backs high
- High press, swarming around ball; rapid regrouping in defensive block
- 1 Endler commanding keeper behind strong back line with aerial ability
- Dynamic attack-minded unit; dangerous set plays; winning mentality



PARIS SAINT-GERMAIN



COACH

DIDIER OLLÉ-NICOLLE



BORN: 02/09/1960, Belley (FRA)
NATIONALITY: French
HEAD COACH: Since 05/07/2021
UEFA CLUB TROPHIES WON: 0

GROUP B

BRE
W 0-2

KHA
W 5-0

MAD
W 4-0

MAD
W 0-2

KHA
W 0-6

BRE
W 6-0

QUARTER-FINALS

BAY
W 1-2

BAY
D 2-2*

SEMI-FINALS

LYO
L 3-2

LYO
L 1-2

FINAL

Matches: Orange = home, white = away; grey = final; see page 5 for full club names

*After extra time

AVERAGES

POSSESSION

57%

Max. 74% v Breidablik (a)
Min. 38% v Bayern (h)
UWCL rank: 4

POSSESSION POSITION

First third	29%
Middle third	52%
Attacking third	19%

500

PASSES ATTEMPTED

Max. 804 v Breidablik (a)
Min. 294 v Bayern (h)
UWCL rank: 6

82%

PASS ACCURACY

Max. 88% v Breidablik (h)
Min. 67% v Bayern (h)
UWCL rank: 4

PASS DISTANCE*

Long	44 (9% of total)	UWCL rank: 7=
Medium	217 (44%)	UWCL rank: 3=
Short	239 (48%)	UWCL rank: 6

PASSES PER DEFENSIVE ACTION**

Average	UWCL rank
11.9	8

RECOVERIES IN ATTACKING THIRD

Average	UWCL rank
7.3	6=

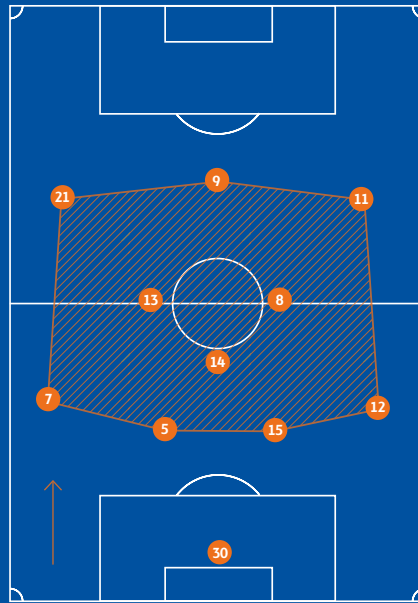
*Decimal points account for the extra/missing 1%

**Number of passes conceded in opposition and middle thirds divided by number of defensive actions. A lower PPDA indicates a higher degree of pressing.

SHAPE

Example: v Bayern (a)

3 In possession



SQUAD

App Min G A

GOALKEEPERS

1 Stephanie Labbe	3	270		
30 Barbora Votiková	6	525		
40 Charlotte Voll	2	135		

DEFENDERS

4 Paulina Dudek	9	718	2	
5 Elisa De Almeida	8	400		
7 Sakina Karchaoui	9	779	1	2
12 Ashley Lawrence	9	836	3	
15 Amanda Ilestedt	9	806	1	1
19 Estelle Cascarino	3	60		
21 Sandy Baltimore	10	692	3	3
28 Jade Le Guillu	2	113		

MIDFIELDERS

6 Luana	3	29	1	
8 Grace Geyoro	9	812	1	1
13 Sara Däbritz	8	553	1	3
14 Kheira Hamraoui	3	273		
17 Celin Bizet Ildhusøy	2	96	2	
18 Laurina Fazer	7	365	1	1
20 Aminata Diallo	5	293		
22 Oceane Hurtre	1	32		
25 Magnaba Folquet	4	120		
27 Lea Khelifi	4	206	2	
32 Baby-Jordy Benera	1	14		

FORWARDS

9 Marie-Antoinette Katoto	7	631	7	
10 Ramona Bachmann	9	382	4	3
11 Kadidiatou Diani	9	761	1	2
23 Jordyn Huitema	7	287	6	2
29 Hawa Sangare	1	32		

App = Appearances; Min = Minutes played; G = Goals; A = Assists

AVERAGE AGE

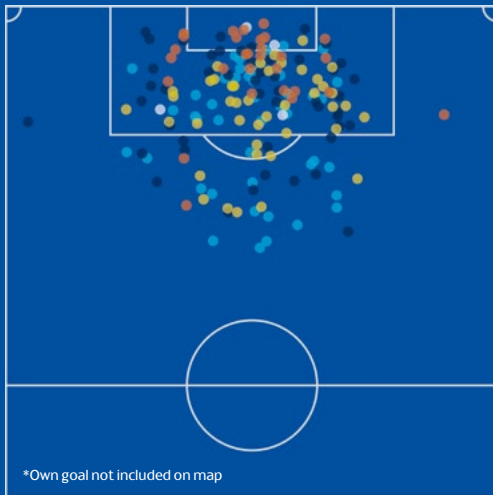
24.1

CARDS

15 **1**

Sent off:
Cascarino v Kharkiv (a)

ATTEMPTS



*Own goal not included on map

32 GOALS (1 own goal)
3.2 per match; UWCL rank: 2

25.3 EXPECTED GOALS (xG)
2.5 per match; UWCL rank: 2

175 GOAL ATTEMPTS
17.5 per match; UWCL rank: 3

85 ON TARGET
8.5 per match; UWCL rank: 2

GOALS	17%
SAVED	27%
BLOCKED	25%
WOODWORK	2%
OFF TARGET	28%

PLAYER STATISTICS

Where totals are equal, rank is decided by next value

GOALS	G	S	OT	xG
1 Marie-Antoinette Katoto	7	21	13	4.7
2 Jordyn Huitema	6	18	9	3.9
3 Ramona Bachmann	4	14	11	2.6

G = Goals; S = Shots; OT = On Target; xG = Expected Goals

PASSES	Att	R	S%	PF%
1 Sakina Karchaoui	569	484	82	49
2 Amanda Ilestedt	557	413	86	39
3 Paulina Dudek	557	407	82	39

Att = Attempted; R = Passes Received; S = Successful; PF = Pass Forward

CHANCE CREATION	A	KP	xA
1 Sandy Baltimore	3	18	1.8
2 Sara Däbritz	3	15	2.1
3 Ashley Lawrence	3	11	1.3

A = Assists; KP = Key Passes; xA = Expected Assists

DEFENDING	P	BR	TW	I
1 Ashley Lawrence	186	80	20	8
2 Grace Geyoro	140	48	6	6
3 Kadidiatou Diani	117	45	8	4

P = Pressures; BR = Balls Recovered; TW = Tackles Won; I = Interceptions

KEY FEATURES

- 1-4-3-3 with, usually, one holding midfielder; occasional switch to 1-4-4-2
- High-tempo attacks or counters with variation, solo skills, athletic qualities
- Two fast adventurous full-backs supporting attacks, covering back
- 8 Geyoro midfield fulcrum, controlling tempo, launching counters
- Attack led by 9 Katoto, excellent in back-to-goal play, opportunism
- Immediate high press on ball after loss of possession to disturb construction
- Otherwise, fast retreat into low defensive block with space between lines



REAL MADRID CF



COACH

ALBERTO TORIL*



BORN: 07/07/1973,
Peñarroya-Pueblonuevo (ESP)
NATIONALITY: Spanish
HEAD COACH: Since 29/11/2021
UEFA CLUB TROPHIES WON: 0

*David Aznar was in charge for Matchdays 1 to 4



GROUP B			QUARTER-FINALS				SEMI-FINALS		FINAL	
KHA W 0-1	BRE W 5-0	PSG L 4-0	PSG L 0-2	BRE W 0-3	KHA W 3-0	BAR L 1-3	BAR L 5-2			

Matches: Orange = home, white = away; grey = final; see page 5 for full club names

AVERAGES

POSSESSION

54%

Max. 71% v Breidablik (a)
Min. 35% v Barcelona (a)
UWCL rank: 5

POSSESSION POSITION

First third 33%

Middle third 53%

Attacking third 14%

480

PASSES ATTEMPTED

Max. 648 v Breidablik (a)
Min. 293 v Barcelona (h)
UWCL rank: 7

81%

PASS ACCURACY

Max. 86% v Breidablik (h)
Min. 74% v Barcelona (a)
UWCL rank: 5=

PASS DISTANCE*

Long	45 (9% of total)	UWCL rank: 6
Medium	207 (43%)	UWCL rank: 6
Short	228 (47%)	UWCL rank: 7

PASSES PER DEFENSIVE ACTION**

Average	UWCL rank
10	5

RECOVERIES IN ATTACKING THIRD

Average	UWCL rank
7.3	6=

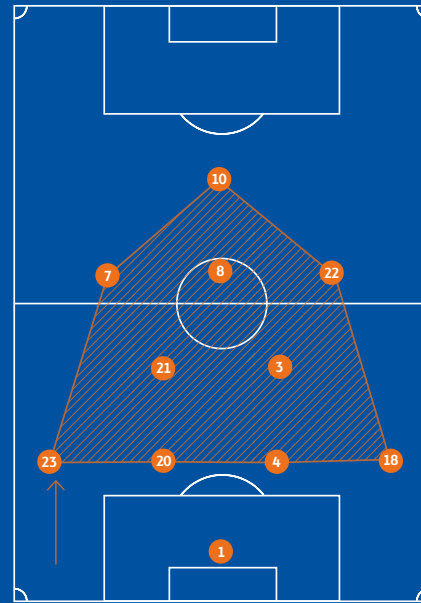
*Decimal points account for the extra/missing 1%

**Number of passes conceded in opposition and middle thirds divided by number of defensive actions. A lower PPDAs indicates a higher degree of pressing.

SHAPE

Example: v Barcelona (h)

☑️ 3 In possession



SQUAD

GOALKEEPERS

	App	Min	G	A
1 Misa	7	630		
24 Méline Gérard	1	90		

DEFENDERS

2 Kenti Robles	8	408		4
4 Babet Peter	7	569	1	
5 Ivana Andrés	6	474		
7 Olga Carmona	6	367	3	
15 Claudia Florentino	5	275		
17 Marta Corredera	6	301		
18 Lucía Rodríguez	7	486		
20 Rocío Gálvez	8	532		
23 Sofie Svava**	2	164		

MIDFIELDERS

3 Teresa Abelleira	6	457		1
6 Aurélie Kaci	2	36		
8 Maite Oroz	6	392	1	1
21 Claudia Zornoza	7	581	2	

FORWARDS

9 Kosovare Asllani	2	116	2	
10 Esther González	6	407	1	1
11 Marta Cardona	2	76		
12 Lorena Navarro	5	259	2	1
14 Nahikari García	8	405	2	
16 Caroline Møller	8	326	3	1
22 Athenea del Castillo	8	552		
28 Paula Durán	1	17		

**Sofie Svava also played for Wolfsburg

App = Appearances; Min = Minutes played; G = Goals; A = Assists

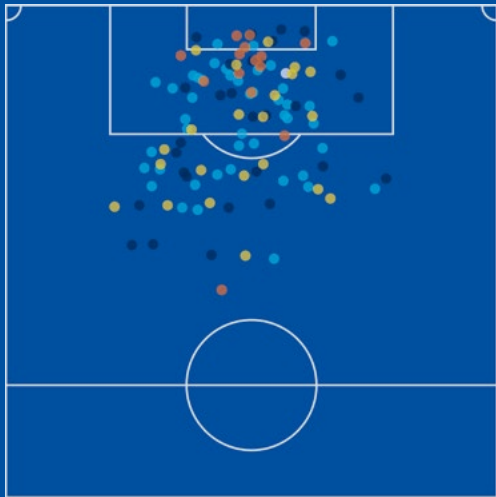
AVERAGE AGE

25.6

CARDS

9 0

ATTEMPTS



15 GOALS
1.88 per match; UWCL rank: 7=

13.7 EXPECTED GOALS (xG)
1.7 per match; UWCL rank: 7=

111 GOAL ATTEMPTS
13.9 per match; UWCL rank: 7

47 ON TARGET
5.9 per match; UWCL rank: 7

GOALS	13%
SAVED	26%
BLOCKED	20%
WOODWORK	1%
OFF TARGET	40%

PLAYER STATISTICS

Where totals are equal, rank is decided by next value

GOALS	G	S	OT	xG
1 Caroline Møller	3	15	7	2.5
2 Olga Carmona	3	5	4	1.4
3 Claudia Zornoza	2	12	4	0.7

G = Goals; S = Shots; OT = On Target; xG = Expected Goals

CHANCE CREATION	A	KP	xA
1 Kenti Robles	4	4	1.2
2 Nahikari García	2	6	0.5
3 Teresa Abelleira	1	10	0.8

A = Assists; KP = Key Passes; xA = Expected Assists

PASSES	Att	R	S%	PF%
1 Claudia Zornoza	406	313	82	30
2 Babet Peter	405	321	88	40
3 Rocío Gálvez	380	299	89	38

Att = Attempted; R = Passes Received; S = Successful; PF = Pass Forward

DEFENDING	P	BR	TW	I
1 Athenea del Castillo	197	37	10	1
2 Claudia Zornoza	149	59	5	3
3 Teresa Abelleira	139	45	10	6

P = Pressures; BR = Balls Recovered; TW = Tackles Won; I = Interceptions

KEY FEATURES

- 1-4-2-3-1 with fast transitions to compact, narrow 1-4-4-1-1 or 1-4-5-1 defence
- Attacks with wingers, full-backs on touchlines creating space for midfielders
- Striker 10 González fast, direct, adept at finding space behind centre-backs
- Frequent use of direct back-to-front passing to exploit her qualities
- Energetic pressure on ball carrier; occasional use of collective high press
- Centre-backs 4 Peter, 21 Zornoza with 1v1 skills, aerial and passing ability
- Well-organised unit with skilful wing play, counterattacking potential



SERVETTE FCF



COACH

ERIC SÉVÉRAC



BORN: 21/12/1970, Iséables (SUI)
NATIONALITY: Swiss
HEAD COACH: Since 01/07/2017
UEFA CLUB TROPHIES WON: 0

GROUP A

JUV L 0-3	WOL L 5-0	CHE L 0-7	CHE L 1-0	WOL L 0-3	JUV L 4-0
--------------	--------------	--------------	--------------	--------------	--------------

QUARTER-FINALS

SEMI-FINALS

FINAL

Matches: Orange = home, white = away; grey = final; see page 5 for full club names

AVERAGES

POSSESSION

36%

Max. 48% v Juventus (h)
Min. 30% v Wolfsburg (h)
UWCL rank: 14

POSSESSION POSITION

First third 47%

Middle third 45%

Attacking third 9%

298

PASSES ATTEMPTED

Max. 384 v Juventus (a)
Min. 254 v Chelsea (a), Wolfsburg (h)
UWCL rank: 14

66%

PASS ACCURACY

Max. 75% v Juventus (h)
Min. 57% v Wolfsburg (h)
UWCL rank: 14

PASS DISTANCE*

Long	42 (14% of total)	UWCL rank: 11=
Medium	119 (40%)	UWCL rank: 14
Short	138 (46%)	UWCL rank: 14

PASSES PER DEFENSIVE ACTION**

Average	UWCL rank
16.2	14

RECOVERIES IN ATTACKING THIRD

Average	UWCL rank
4.5	14

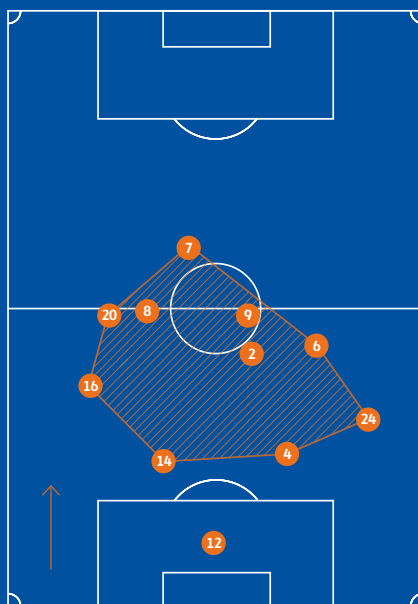
*Decimal points account for the extra/missing 1%

**Number of passes conceded in opposition and middle thirds divided by number of defensive actions. A lower PPDA indicates a higher degree of pressing.

SHAPE

Example: v Chelsea (a)

3 In possession



SQUAD

App Min G A

GOALKEEPERS

12 Inês Pereira 6 540

DEFENDERS

2 Laura Tufo 4 299

3 Daïna Bourma 5 141

4 Laura Felber 4 337

13 Tessa Tamplin 6 266

14 Nathalia Spälti 6 464

16 Mónica Mendes 5 448

24 Amandine Soulard 5 440

MIDFIELDERS

6 Élodie Nakkach 6 521

8 Sandy Maendly 5 390

9 Alyssa Lagonia 4 306

19 Paula Serrano 1 63

21 Ilona Guede Redondo 5 83

22 Thaïs Hurni 3 270

33 Alyssa Grivaz 3 3

FORWARDS

7 Jade Boho 6 491

15 Marta Peiro Gimenez 3 103

20 Natalia Padilla-Bidas 6 457

23 Léonie Fleury 6 280

34 Ines Sebayang 2 31

App = Appearances; Min = Minutes played; G = Goals; A = Assists

AVERAGE AGE

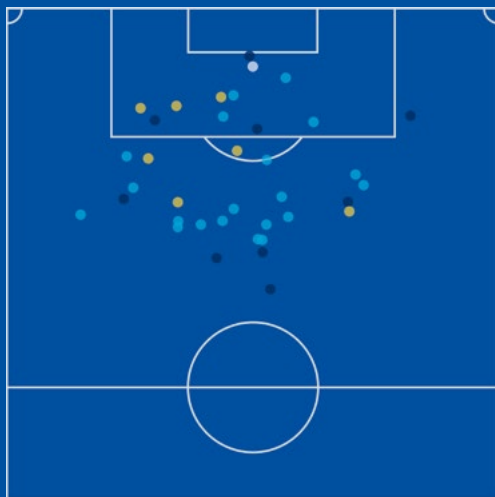
24.7

CARDS

10 1

Sent off:
Soulard v Chelsea (a)

ATTEMPTS



0

GOALS

0 per match; UWCL rank: 15=

1.6

EXPECTED GOALS (xG)

0.3 per match; UWCL rank: 16

38

GOAL ATTEMPTS

6.3 per match; UWCL rank: 15=

9

ON TARGET

1.5 per match; UWCL rank: 16

GOALS	0%
SAVED	23%
BLOCKED	18%
WOODWORK	3%
OFF TARGET	56%

PLAYER STATISTICS

Where totals are equal, rank is decided by next value

GOALS

	G	S	OT	xG
1 Jade Boho	0	8	2	0.3
2 Mónica Mendes	0	5	2	0.4
3 Élodie Nakkach	0	5	2	0.1

G = Goals; S = Shots; OT = On Target; xG = Expected Goals

PASSES

	Att	R	S%	PF%
1 Inês Pereira	242	112	64	49
2 Sandy Maendly	173	124	57	45
3 Élodie Nakkach	159	105	61	49

Att = Attempted; R = Passes Received; S = Successful; PF = Pass Forward

CHANCE CREATION

	A	KP	xA
1 Sandy Maendly	0	9	0.2
2 Alyssa Lagonia	0	4	0.7
3 Ilona Guede Redondo	0	4	0.0

A = Assists; KP = Key Passes; xA = Expected Assists

DEFENDING

	P	BR	TW	I
1 Élodie Nakkach	117	36	5	7
2 Amandine Soulard	112	29	9	4
3 Natalia Padilla-Bidas	97	19	2	3

P = Pressures; BR = Balls Recovered; TW = Tackles Won; I = Interceptions



Midfielder Élodie Nakkach (right) in action against Juventus



VFL WOLFSBURG



COACH

TOMMY STROOT



BORN: 24/12/1988, Nordhorn (GER)
NATIONALITY: German
HEAD COACH: Since 01/07/2021
UEFA CLUB TROPHIES WON: 0



GROUP A			QUARTER-FINALS			SEMI-FINALS		FINAL	
CHE D 3-3	SER W 5-0	JUV D 2-2	JUV L 0-2	SER W 0-3	CHE W 4-0	ARS D 1-1	ARS W 2-0	BAR L 5-1	BAR W 2-0

Matches: Orange = home, white = away; grey = final; see page 5 for full club names

AVERAGES

POSSESSION

52%

Max. 70% v Servette (a)
Min. 33% v Barcelona (a)
UWCL rank: 7

POSSESSION POSITION

First third 35%

Middle third 48%

Attacking third 17%

435

PASSES ATTEMPTED

Max. 600 v Servette (a)
Min. 287 v Barcelona (a)
UWCL rank: 8

75%

PASS ACCURACY

Max. 85% v Servette (a)
Min. 64% v Chelsea (a)
UWCL rank: 9=

PASS DISTANCE*

Long	44 (10% of total)	UWCL rank: 7=
Medium	172 (40%)	UWCL rank: 8
Short	220 (50%)	UWCL rank: 8

PASSES PER DEFENSIVE ACTION**

Average	UWCL rank
10.6	7

RECOVERIES IN ATTACKING THIRD

Average	UWCL rank
8.2	5

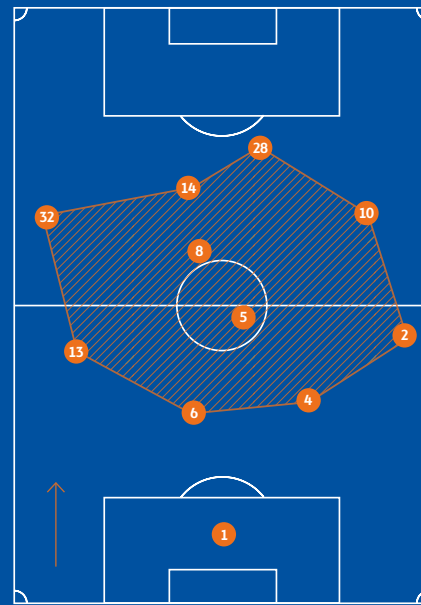
*Decimal points account for the extra/missing 1%

**Number of passes conceded in opposition and middle thirds divided by number of defensive actions. A lower PPDA indicates a higher degree of pressing.

SHAPE

Example: v Arsenal (h)

In possession



SQUAD

	App	Min	G	A
GOALKEEPERS				
1 Almuth Schult	9	810		
30 Lisa Weiß	1	90		
DEFENDERS				
2 Lynn Wilms	3	180		
4 Kathrin-Julia Hendrich	10	873		
6 Dominique Janssen	10	873	1	
13 Felicitas Rauch	9	765		
19 Sofie Svava	4	117		
23 Sara Doorsoun-Khajeh	3	107		
24 Joelle Wedemeyer	8	718		1
MIDFIELDERS				
5 Lena Oberdorf	7	625	3	
8 Lena Lattwein	10	852	1	
10 Svenja Huth	10	824	3	1
14 Jill Roord	10	816	5	1
16 Sandra Starke	4	35	1	
31 Lotta Cordes	2	29	1	
33 Turid Knaak	7	252	3	
FORWARDS				
7 Pauline Bremer	6	176		
11 Alexandra Popp	4	225		
17 Ewa Pajor	3	130		
18 Joëlle Smits	2	64	1	
20 Pia-Sophie Wolter	1	88		
21 Rebecka Blomqvist	4	32		
22 Shanice van de Sanden	3	101		
28 Tabea Wassmuth	10	848	10	2
32 Sveindís Jane Jónsdóttir	4	270	2	

App = Appearances; Min = Minutes played; G = Goals; A = Assists

AVERAGE AGE

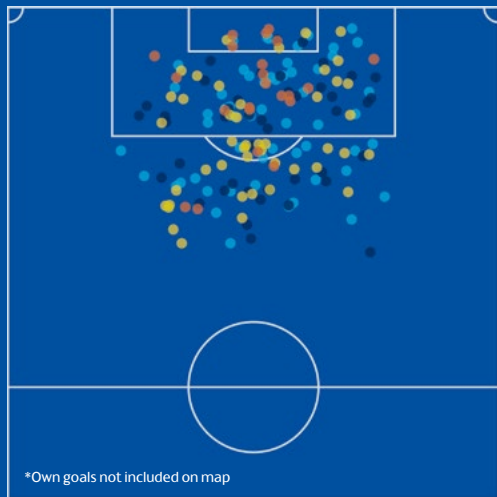
26.2

CARDS

21 **1**

Sent off:
Rauch v Juventus (a)

ATTEMPTS



*Own goals not included on map

23 GOALS (2 own goals)
2.3 per match; UWCL rank: 4

17.0 EXPECTED GOALS (xG)
1.7 per match; UWCL rank: 7=

167 GOAL ATTEMPTS
16.7 per match; UWCL rank: 4

65 ON TARGET
6.5 per match; UWCL rank: 5

GOALS		13%
SAVED		26%
BLOCKED		27%
WOODWORK		1%
OFF TARGET		34%

PLAYER STATISTICS

Where totals are equal, rank is decided by next value

GOALS	G	S	OT	xG
1 Tabea Wassmuth	10	45	20	6.6
2 Jill Roord	5	26	13	2.4
3 Svenja Huth	3	22	12	2.5

G = Goals; S = Shots; OT = On Target; xG = Expected Goals

CHANCE CREATION	A	KP	xA
1 Lena Oberdorf	3	9	0.6
2 Turid Knaak	3	2	0.6
3 Tabea Wassmuth	2	10	1.4

A = Assists; KP = Key Passes; xA = Expected Assists

PASSES	Att	R	S%	PF%
1 Dominique Janssen	527	390	82	35
2 Joelle Wedemeyer	466	357	79	44
3 Kathrin-Julia Hendrich	436	325	80	45

Att = Attempted; R = Passes Received; S = Successful; PF = Pass Forward

DEFENDING	P	BR	TW	I
1 Tabea Wassmuth	229	31	8	6
2 Lena Lattwein	200	66	25	7
3 Svenja Huth	194	60	7	8

P = Pressures; BR = Balls Recovered; TW = Tackles Won; I = Interceptions

KEY FEATURES

- 1-4-4-2 or 1-4-3-3 attacking structure; 1-4-5-1 or 1-5-4-1 defending
- High-tempo transition play; rapid passing into space behind defence
- Strong physical presence; aggressive pressure on ball; second-ball winning
- 5 Oberdorf linking midfielder; 28 Wassmuth leading attack with pace, energy
- High defensive line minimising spaces, marking tightly, creating 1v1 duels
- Commanding goalkeeping by 1 Schult; shot-stopping, good passing, leadership
- Athletic team with strong work ethic, stamina, mental resilience, spirit

ROLL OF HONOUR

- 2022 Lyon
- 2021 Barcelona
- 2020 Lyon
- 2019 Lyon
- 2018 Lyon
- 2017 Lyon
- 2016 Lyon
- 2015 1. FFC Frankfurt
- 2014 Wolfsburg
- 2013 Wolfsburg
- 2012 Lyon
- 2011 Lyon
- 2010 Turbine Potsdam
- 2009 Duisburg
- 2008 1. FFC Frankfurt
- 2007 Arsenal
- 2006 1. FFC Frankfurt
- 2005 Turbine Potsdam
- 2004 Umeå
- 2003 Umeå
- 2002 1. FFC Frankfurt

CREDITS

Editorial and analysis

Tom Cooper, Graham Turner,
Jozef Záhorský, Atle Rosseland

UEFA technical observers

Corinne Diacre, Jarmo Matikainen, Nils Nielsen, Vera Pauw,
Hope Powell, Anna Signeul, Monika Staab, Jorge Vilda

UEFA technical director

Zvonimir Boban

UEFA head of technical development

Frank K. Ludolph

UEFA publications manager

Emmanuel Deconche

Managing editor

Michael Harrod

Art Director

Oliver Meikle

Design

André Viegas, Tom Radford, Fernando Pires

Sub-editors

Andrew Haslam, Luke Nicoli

Statistics

Stats Perform, Statsbomb, Rob Esteva,
The Stats Zone, UEFA Data Services

Production

Andrew Sam, Kat Rickards

Translators

French: Anna Simon, Cécile Pierreclos, Isabelle Žakman,
Sébastien Plader, Barbara Mazotti, Aurélien Sagnier,
Sébastien Blanchard

German: Sybille Baldenhofer, Marten Hinz,
Helene Kubasky, Robert Paulig, Florian Simmen,
Sandra Wisniewski, Frédéric Wyler

Photography

Getty Images, UEFA

Print

Artgraphic Cavin, Grandson



UEFA's technical team at the final (from left to right):
Graham Turner, Jorge Vilda, Monika Staab, Hope Powell, Vera Pauw,
Nils Nielsen, Corinne Diacre, Anna Signeul and Frank Ludolph

Designed and produced by TwelfthMan on behalf of UEFA

©UEFA 2022. All rights reserved. The UEFA word, the UEFA Women's Champions League logo and trophy are protected by trade marks and/or copyright of UEFA. No use for commercial purposes may be made of such trade marks.





UEFA
ROUTE DE GENÈVE 46
CH-1260 NYON 2
SWITZERLAND
TELEPHONE: +41 848 00 27 27
TELEFAX: +41 848 01 27 27
UEFA.com

WE CARE ABOUT FOOTBALL
