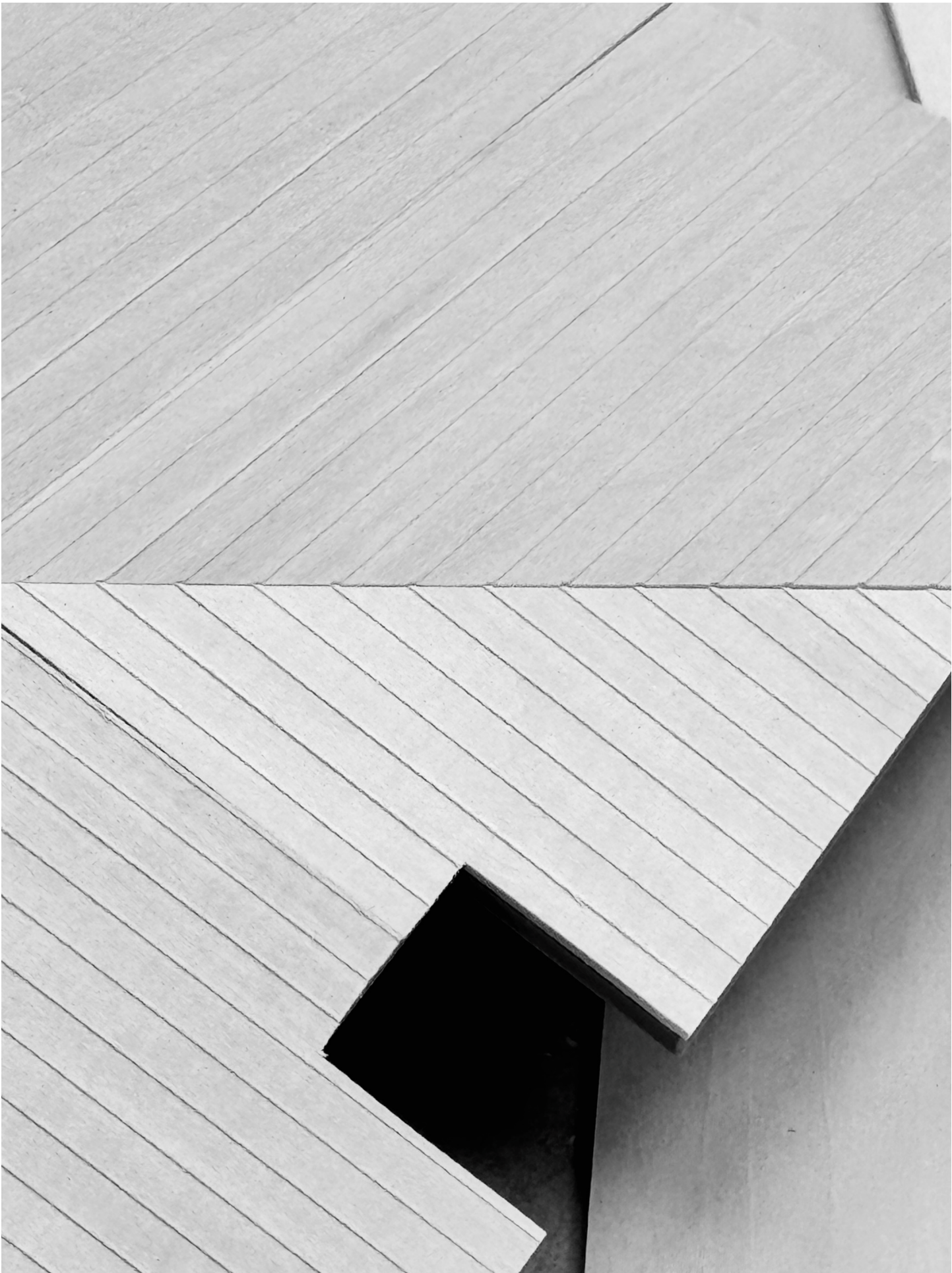
The background of the entire page is a dark charcoal gray. It is decorated with a repeating pattern of light gray line drawings. These drawings consist of squares and 3D cubes, each with internal lines that create a sense of depth and geometric complexity. Some squares have diagonal lines, while others have more intricate internal patterns. The cubes are shown from different perspectives, some appearing to float or be attached to the squares. The pattern is distributed across the entire page, framing the central text.

# JOSHUA TREE NATIONAL PARK OASIS OF MARA VISITOR CENTER

COILED PATHS, OPEN HORIZONS.

74485 National Park Dr,  
Twentynine Palms, California, USA 92277

Designed by:  
Jae Bin Lee + Tristan Deetz





# Joshua Tree National Park Oasis of Mara Visitor Center

## Coiled Paths, Open Horizons

Blurring boundaries between built and natural, this visitor center becomes both shelter and storyteller—guiding visitors through a choreographed interplay of structure, shadow, and desert light.

Rooted in the dynamic landscape of Joshua Tree National Park, this visitor center draws inspiration from Akihisa Hirata’s Coil and Atelier Bow-Wow’s House Asama, merging organic spatial flow with a clear tectonic framework. The design is composed of three interdependent volumetric elements—porch, roof, and walls—that together define a sequence of experiential thresholds between desert exterior and interior exhibition space.

**Location:**  
Twentynine Palms, California, USA

**Role:**  
Architecture

**Phasing:**  
Pre-Design  
Schematic Design

**Class:**  
University of Southern California (USC)  
ARCH 505B

**Design Year:**  
2025

**Collaborator:**  
Tristan Deetz

**Instructors:**  
Gary Paige  
Amanda Ortland

## Project Background

This visitor center emerges from a precedent-based design approach that honors architectural lineage while striving for spatial innovation. Drawing on the wisdom of T.S. Eliot—who wrote that “good poets make it into something better, or at least something different”—the project is rooted in the study of exemplary works, not to replicate but to reimagine.

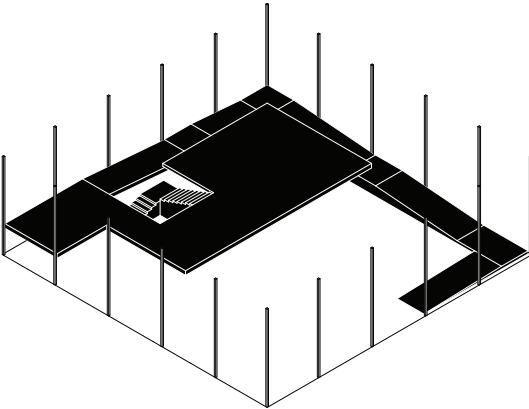
Inspired by Coil by Akihisa Hirata and House Asama by Atelier Bow-Wow, the design reflects a deep engagement with spatial principles and formal logic. These precedents offered more than aesthetic cues—they provided frameworks for understanding circulation, environmental response, and volumetric articulation. By closely analyzing their spatial systems, relationships between parts and whole, and integration with site, I was able to extract key ideas that inform the project’s parti.

### In line with the pedagogical goals of the studio, this process involved:

Understanding architectural history to situate the project within a broader disciplinary context.  
Reading beyond appearances to uncover latent organizational principles and generative spatial logics.  
Translating analysis into design by synthesizing precedent knowledge into a new architectural expression.

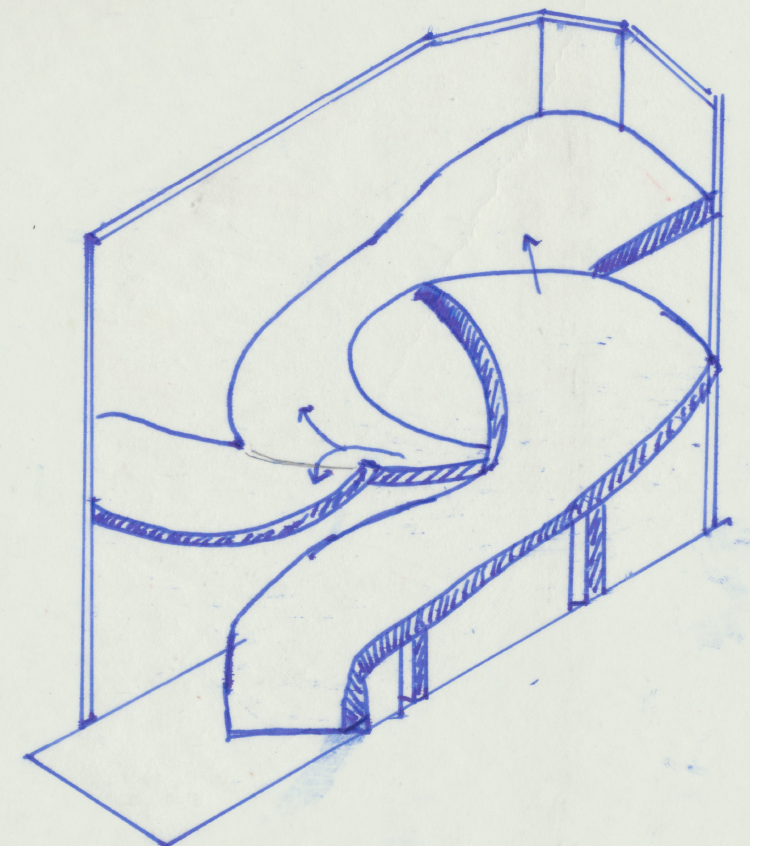
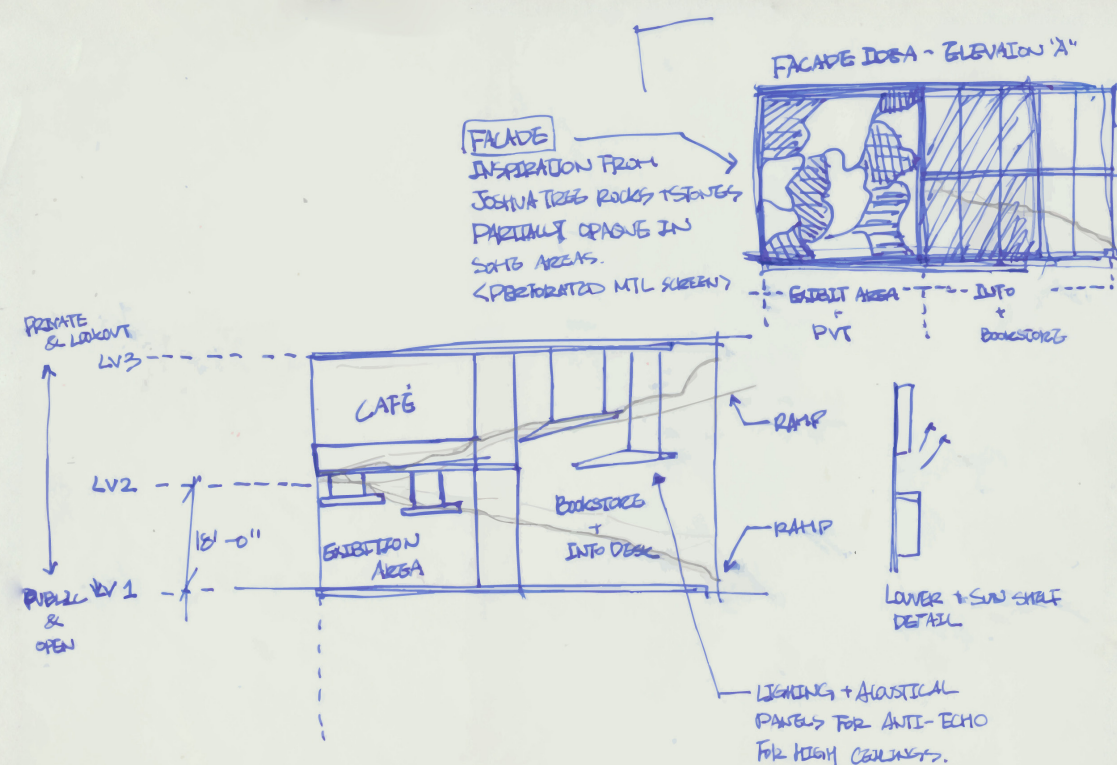
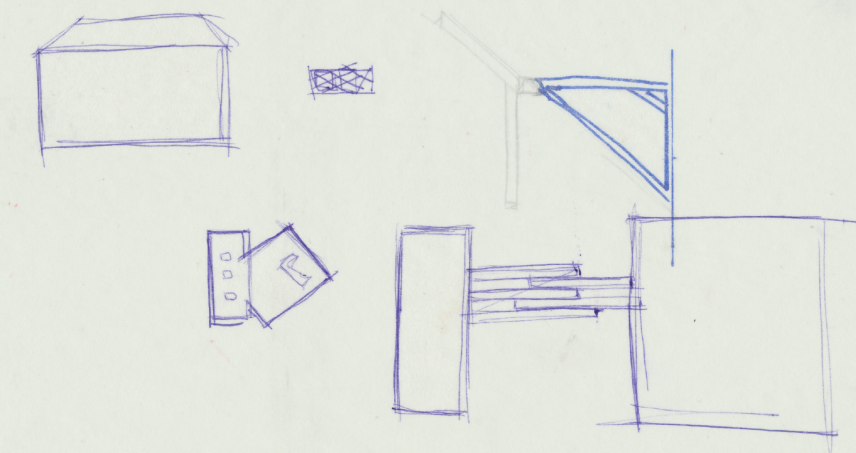
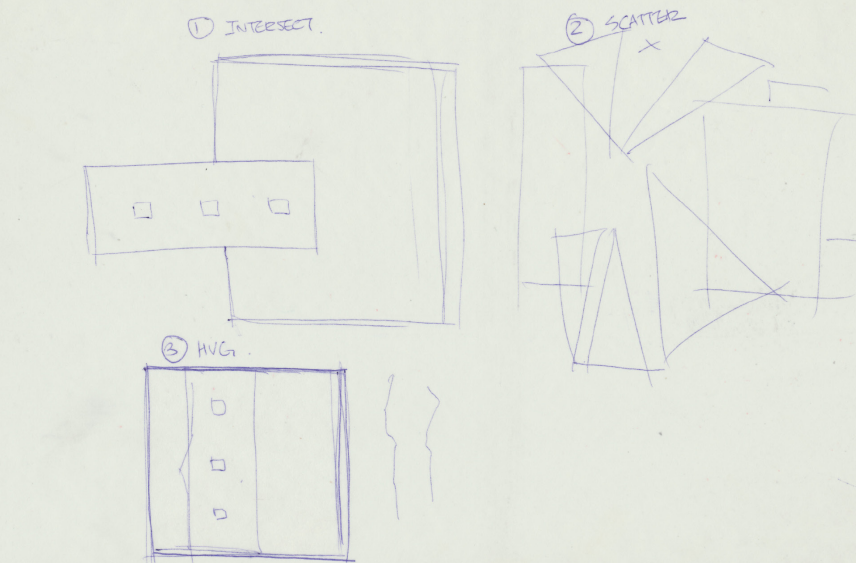
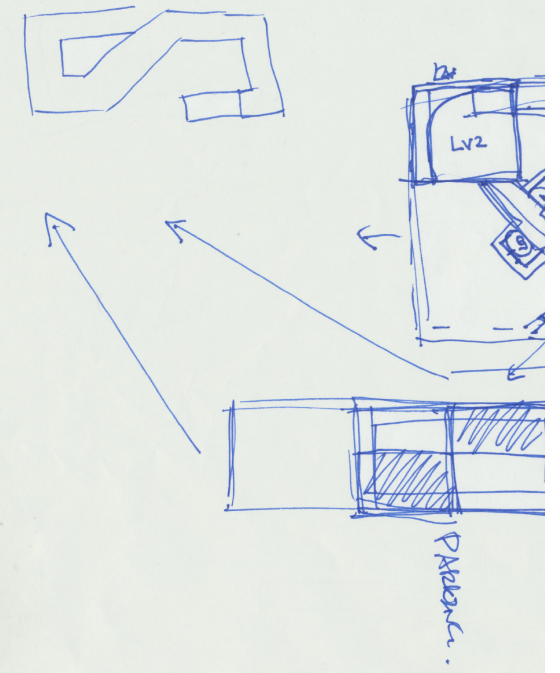
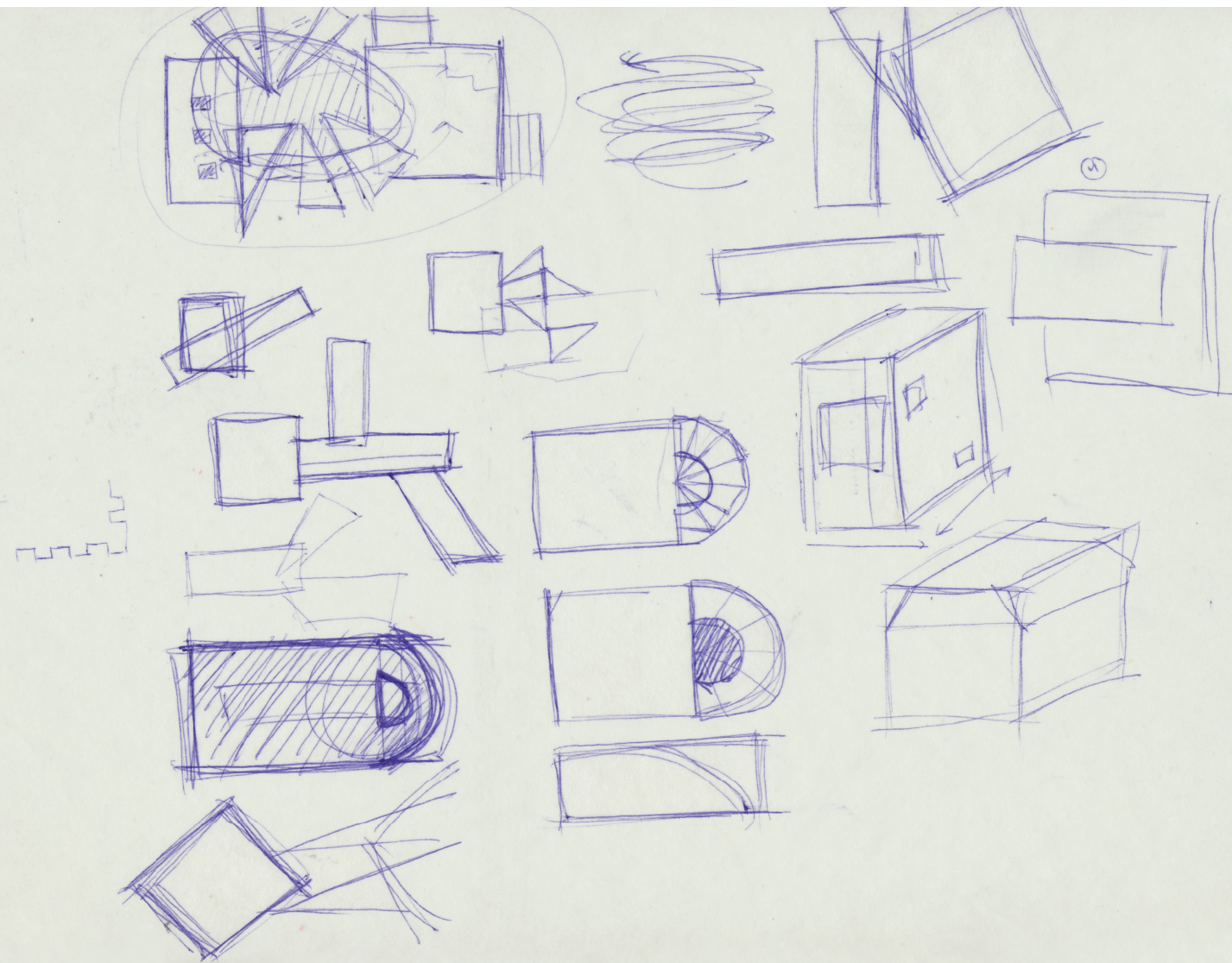
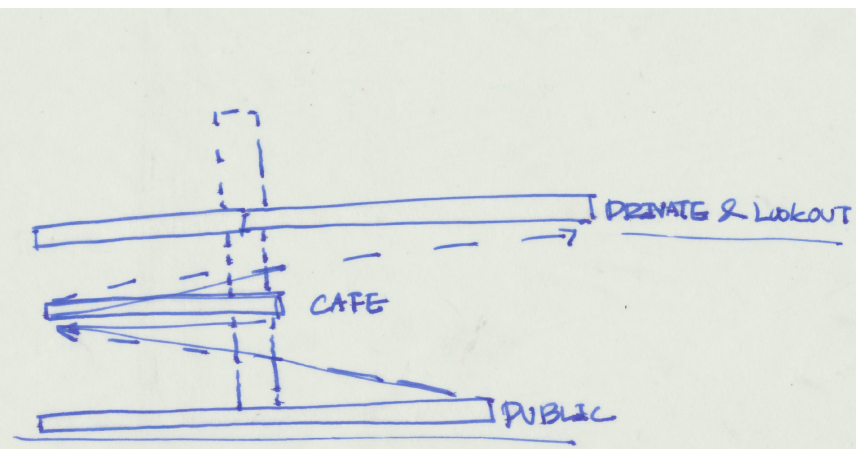
## Design

The JTNP Oasis of Mara Visitor Center integrates the continuous fluidity of Coil with the distinct volumetric articulation of Tristan’s Project, creating a dynamic interplay between movement and spatial organization. A winding ramp coils around the structure, guiding visitors through a series of programmed moments—seating areas, lookouts, and exhibition spaces—before leading to the second-floor café, which overlooks the vibrant activity below. This seamless circulation fosters an immersive experience, blurring the boundaries between architecture and landscape while enhancing the connection between visitors and the natural surroundings.



JTNP - Oasis of Mara Visitor Center  
Exterior View / Perspective View





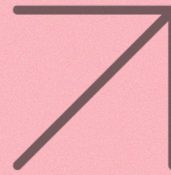




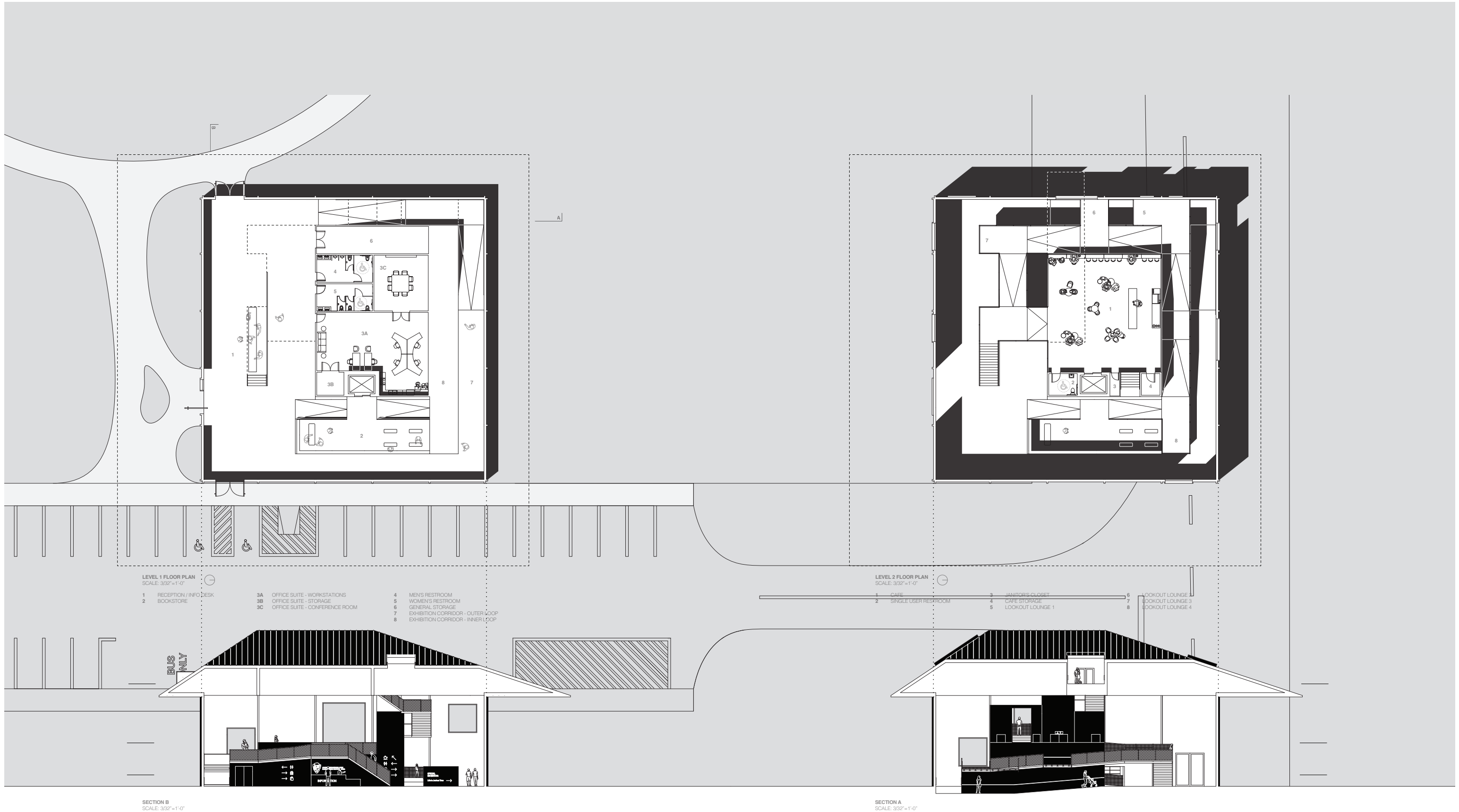


# Sonnhild Kestler in the Desert: Exploration of Patterns

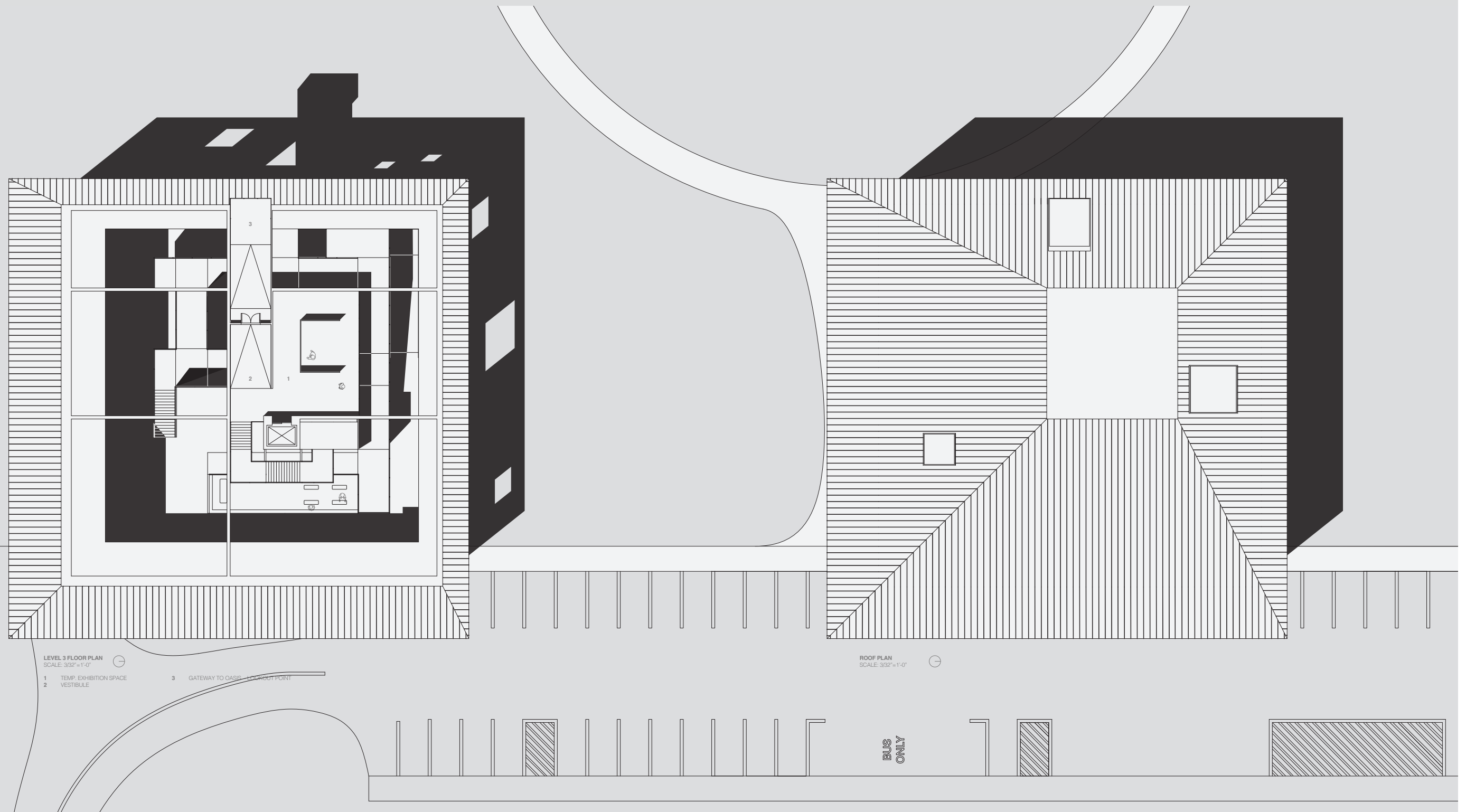
May 2025 - August 2025



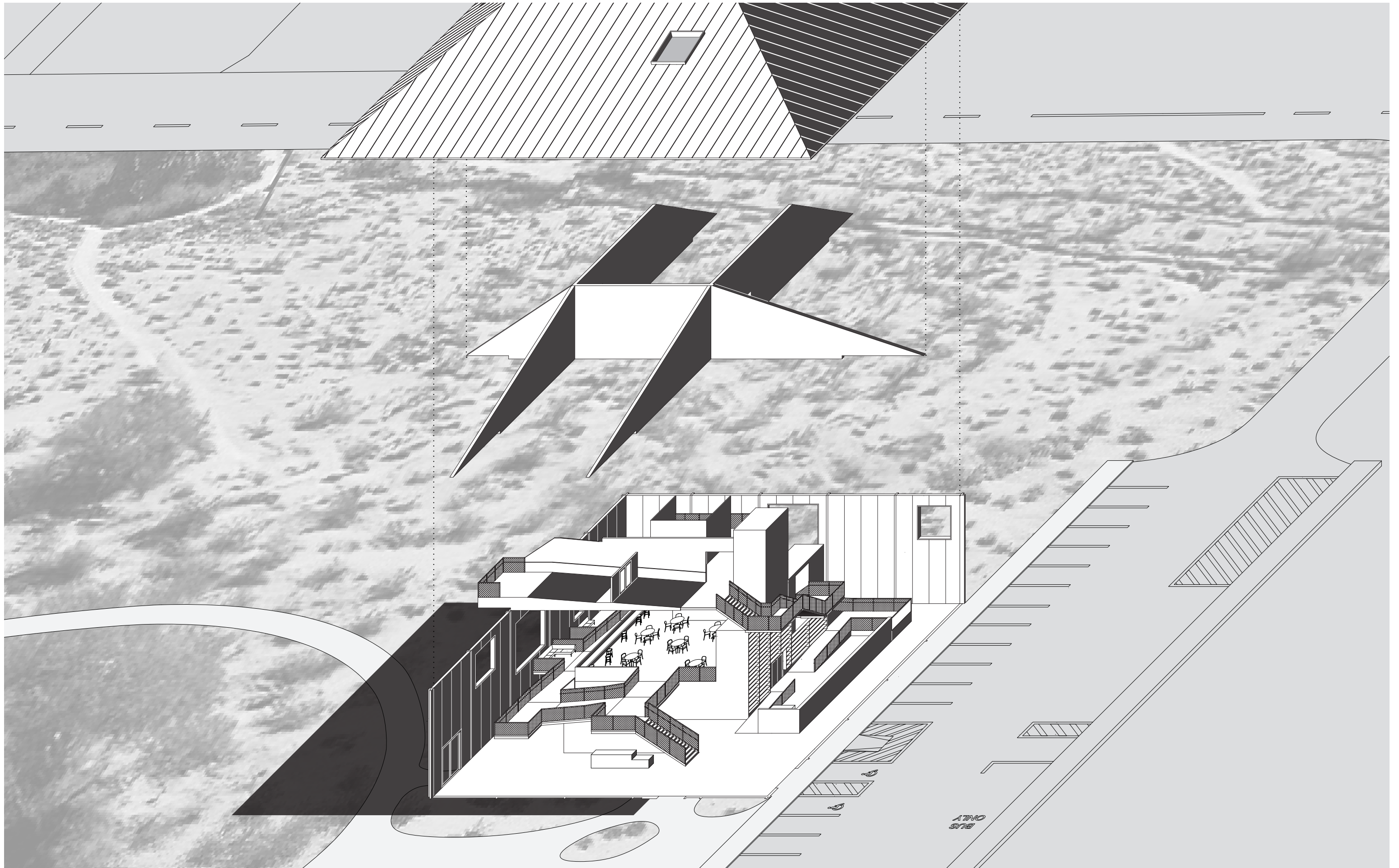








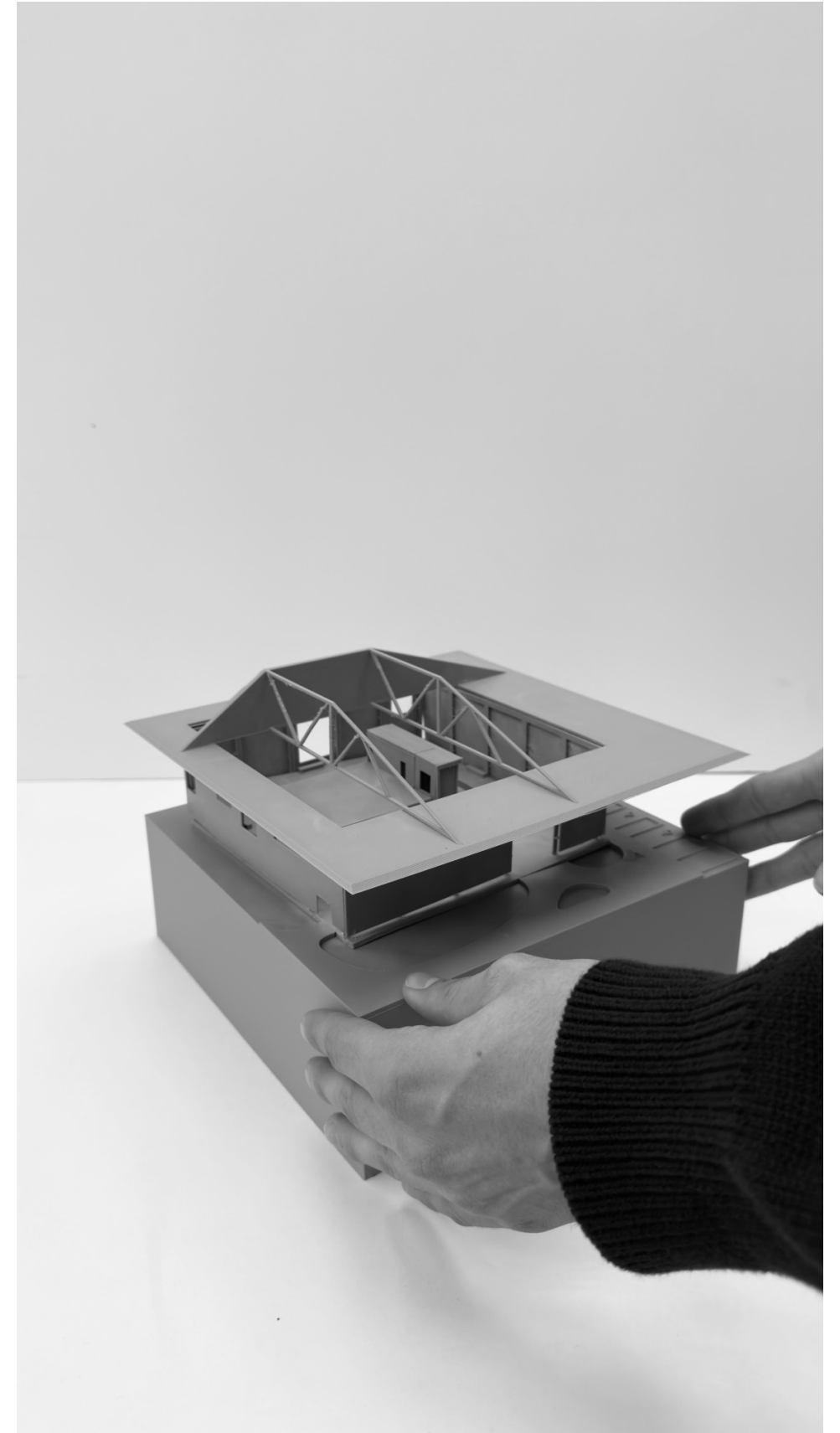
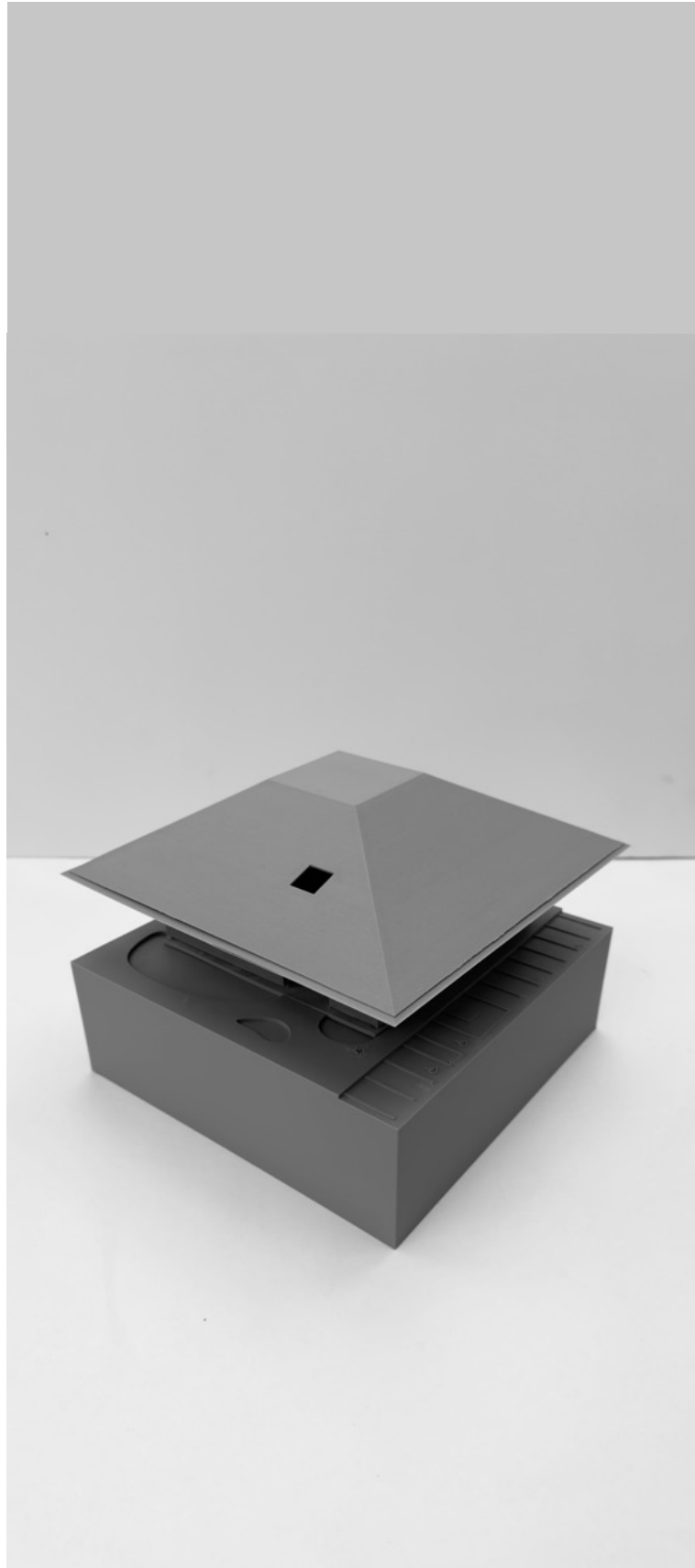
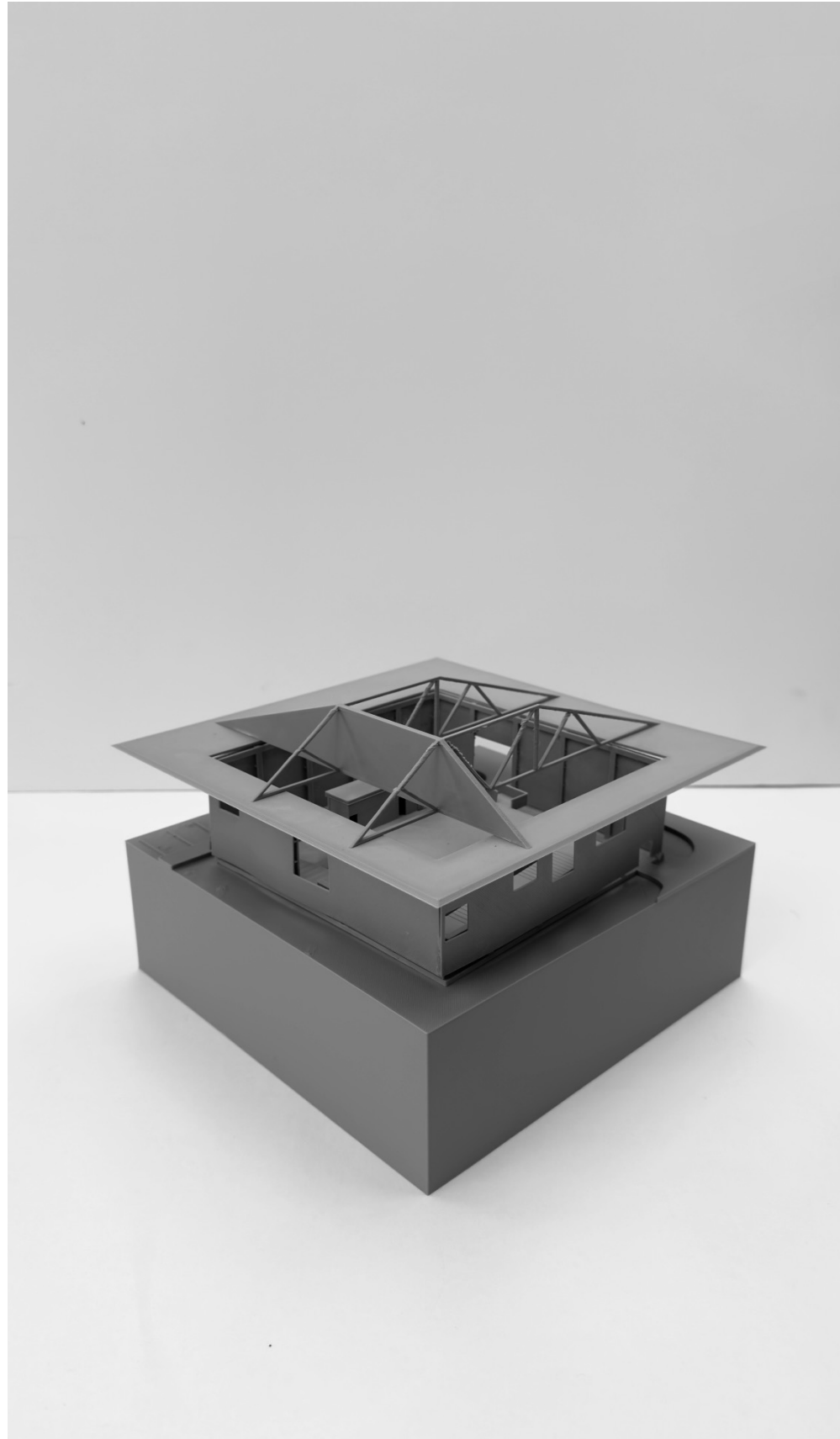








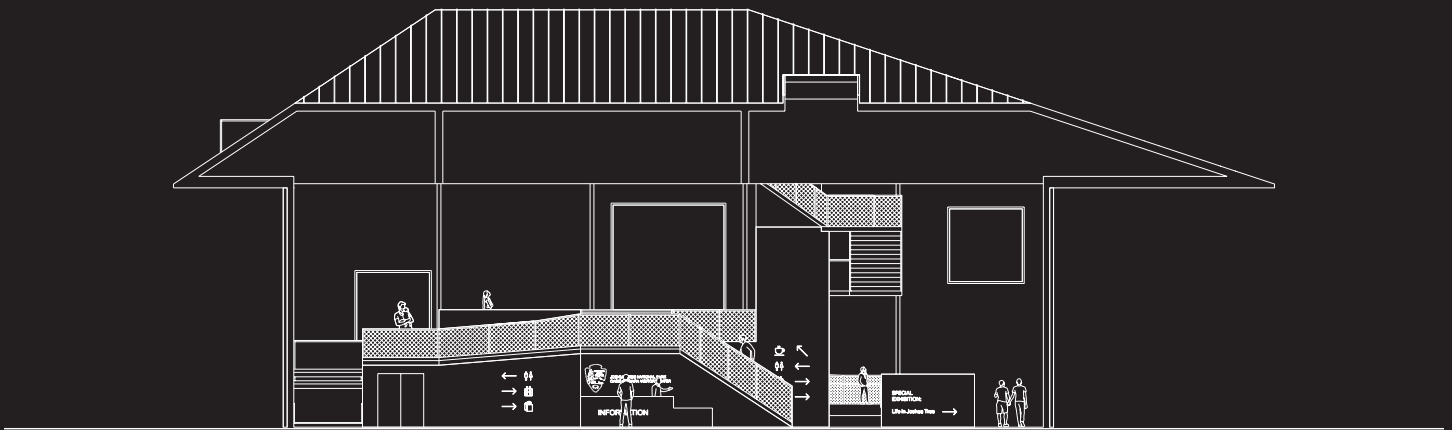












Jae Bin Lee  
[www.jaebinlee.com](http://www.jaebinlee.com)

E    jaebinl@usc.edu  
 M    +1 (617) 615-7903

Unauthorized use of any image or text is prohibited in any use.  
 Images cannot be altered or modified in any way, in whole or in part,  
 that disparages Jae Bin Lee or any of the collaborators.

© Jae Bin Lee 2025