

# Steintec<sup>®</sup>

high performance paving products

## Landscape Paving Mortars Installation Guide & Accessories

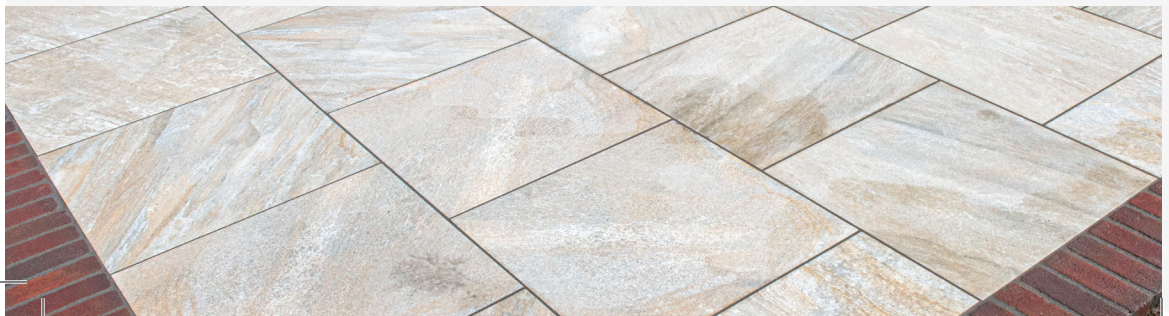
PAVING INSTALLATION AS SIMPLE AS

- 1 BEDDING
- 2 BONDING
- 3 JOINTING

UK Based Manufacturer

# Contents

<b>tuffbed 2-pack Type 25 - Bedding Mortar</b> .....	<b>2</b>
- Application .....	<b>4</b>
<b>tuffbed</b> .....	<b>6</b>
- Pre-blended Bedding Mortar .....	<b>6</b>
- Application .....	<b>7</b>
<b>tuffbond</b> .....	<b>8</b>
- Bonding and Priming Mortar .....	<b>8</b>
- Application .....	<b>9</b>
<b>tuffjoint</b> .....	<b>10</b>
- Dry-Apply Jointing Mortar .....	<b>10</b>
- Application .....	<b>12</b>
<b>tuffgrout</b> .....	<b>14</b>
- Jointing Mortar .....	<b>14</b>
- Application .....	<b>16</b>
<b>tufffix - High Performance Paving Repair Mortar</b> .....	<b>18</b>
- Application .....	<b>19</b>
<b>Tools &amp; Equipment</b> .....	<b>21</b>
<b>weiss - Pavement Care</b> .....	<b>22</b>
<b>Other High Performance Products</b>	
<b>tuffgrit - Unbound Permeable Aggregate</b> .....	<b>24</b>
- Application .....	<b>25</b>
<b>Commerical Mortars</b>	
- tuffbed 2-pack .....	<b>26</b>
- tuffbond & tufftop .....	<b>27</b>
- tuffflow .....	<b>28</b>
- tuffset G & tuffset 60 .....	<b>29</b>



# About Us

The UK's leading supplier of high performance paving mortars.

Supplying the commercial and domestic markets from our UK based factory.

We have many years experience nationally and internationally, contributing to projects with outstanding longevity and visual appeal. We recognise that paving projects represent a major investment to all involved so we're committed to helping ensure the outcome for every project is a success.

## Technical Advice, Sales and Support

In preparation for construction, we will brief contractors and layworkers on specific mixing, laying requirements, techniques, tools and equipment and logistical issues. Our advice will help save time and money on site. During construction we can provide on-site assistance and layworker training specific to the unique requirements of your project.

We offer this valuable technical support free, because Steintec are as keen as you are to be associated with successful professional projects. Contact us at the earliest possible stage of your project and our experienced technical team will be delighted to assist you in any way we can.

**Web:** [www.steintec.co.uk](http://www.steintec.co.uk)

**Email:** [mail@steintec.com](mailto:mail@steintec.com)

**Telephone:** 0203 598 9800

**Address:** 1 Northwick Road  
Canvey Island, Essex  
SS8 0PU, UK



[www.steintec.co.uk](http://www.steintec.co.uk)

# tuffbed<sup>®</sup> 2-pack Type 25

## Key Features

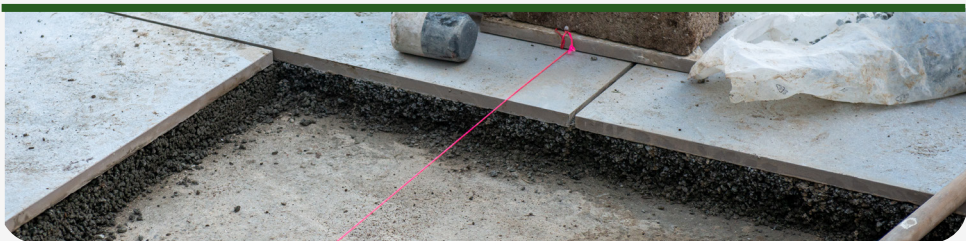
- Type 25 bedding mortar
- Can be laid to a minimum depth of 20 mm, with no limit to the maximum depth. BS 7533-101 recommends a depth of 40 mm.
- Meets all the performance requirements described in Table 9 BS 7533-101 for Type 25 bedding mortars.
- Suitable for pavement construction up to traffic category 4.
- Compatible with all types of paving unit: granite, sandstone, concrete and porcelain
- Polymer and resin free.

Performance exceeds BS7533 requirements for Type 25 bedding mortars and in particular, the requirement for positive vertical and horizontal permeability and frost resistance when cured.

The permeability of the bedding mortar helps to prevent moisture related issues, including frost damage, structural failure, efflorescence, picture framing and organic staining.

Bedding depths of between 30 – 70 mm can be placed in a single layer. Greater depths are achieved by placing successive layers. BS 7533-101 recommends a minimum of 40 mm.

tuffbed 2-pack Type 25 has a maximum capillarity rise of 20 mm in accordance with BS7533-101: 2021 5.4.1 when tested to Annex C.



# Bedding Mortar



www.steintec.co.uk  
/tuffbed2-packType

## Technical Specification

<b>Usage</b>	Type 25 Bedding / Laying Course	<b>Capillary Rise</b>	< 20 mm
<b>Bed Depth</b>	≥ 30 mm (40 mm recommended)	<b>Permeability</b>	> 5.5 x 10 <sup>-4</sup> m/s
<b>Typical water used (full &amp; half batch)</b>	7 litres per 125 kg 3.5 litres per 62.5 kg	<b>Modulus of Elasticity</b>	(18,000 ± 3,500) MPa
<b>Typical coverage</b>	30 mm: 60 kg/m <sup>2</sup> 40 mm: 80 kg/m <sup>2</sup> 50 mm: 100 kg/m <sup>2</sup>	<b>Storage life</b>	2 years from manufacture date
<b>Packaging</b>	25 kg Bag	<b>Compliance (Type 25)</b>	BS 7533-101:2021
<b>Packages per pallet</b>	40		
<b>Pallet weight</b>	1,030 kg inc. pallet		
<b>Working time</b>	30 min at 20°C		
<b>Working temperature</b>	≥ 2°C		
<b>Compressive strength (20°C)</b>	28 days: ≥ 25 MPa		
<b>Flexural strength</b>	6 MPa		

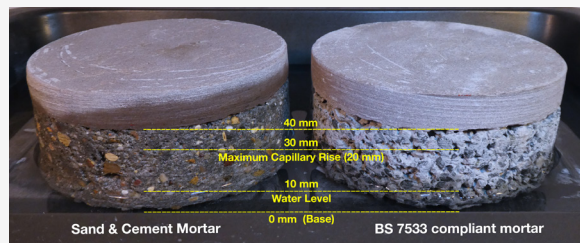


**Low carbon profile:** a two-part product without pre-dried, pre-blended aggregate with the binder supplied separately so that the need for energy-intensive central processing is avoided, saving up to 50% of the energy used to produce a typical pre-blended product where all ingredients are dried.

Capillary rise in sand and cement versus a BS7533 compliant mortar after 18.5 hours.

Scan the QR code to watch the timelapse video.

[vimeo.com/680073851](https://vimeo.com/680073851)



# tuffbed<sup>®</sup> 2-pack Type 25

Scan QR Code  
for a Video  
Demonstration



[www.steintec.co.uk/tuffbed2-packType25/#video](http://www.steintec.co.uk/tuffbed2-packType25/#video)

## Step 1 Clean the area



## Step 2 Mix binder and aggregate



## Step 3 Add water and continue to mix



## Step 4 Place mixed tuffbed 2-pack Type 25 mortar



## Step 5 Brush on the bonding mortar



## Step 6 Bed unit onto tuffbed 2-pack Type 25 mortar



# Application

## Key Information

tuffbed 2-pack Type 25 is a two-part product. The dry powder binder is packed in 25 kg bags and the aggregate packed separately in 25 kg bags as a, 2-6 mm graded, angular crushed igneous rock (tuffgrit). Before commencing work, it is advisable to check that there are 4no. bags of aggregate to every 1no. bag of binder.

**Full mix (125 kg);** will require 4 x 25 kg bags of tuffgrit aggregate to 1x 25 kg bag of tuffbed 2-pack Type 25 binder and 7 litres of water. To ensure consistency of a 125 kg batch, the bedding mortar should ideally be **mixed using a forced action mixer**

**Half mix (125 kg);** can be **mixed in a Belle® mixer** using 2x 25 kg tuffgrit aggregate, 12.5 kg tuffbed 2-pack Type 25 (half bag) and 3.5 litres water.

Aggregate and binder are always mixed together first before adding water.

The final consistency of the mix should be such that tuffbed 2-pack Type 25 can retain the form of a 'snowball' in the hand.

tuffbond bonding (priming) mortar is applied as a 2-3 mm thick coat.



**tuffbed**<sup>®</sup>

## Key Features

- Pre-blended bedding mortar
- Suitable for shallow bedding depth of 10 - 70 mm
- Fully complies with BS 7533-101:2021 type 25 & type 35
- Suitable for heavily trafficked areas
- Compatible with all types of paving; granite, natural stone, concrete & porcelain units
- Suited to commercial and public realm projects

A high performance pre-blended and bagged Type 25 and Type 35 bedding mortar to BS7533-101:2021. tuffbed is supplied in 25 kg sealed moisture resistant bags.

For use in smaller scale commercial, public realm and domestic projects. tuffbed high performance bedding mortar is suitable for use in pavements constructed in concrete or natural stone paving units.

When tested in accordance with BS7533-101, Annex C, tuffbed does not exceed the maximum permissible capillary rise of 20mm.



## Technical Specification

<b>Usage</b>	Bedding / Laying Course	<b>Pallet weight</b>	1,030 or 1,230 kg inc. pallet
<b>Characteristics</b>	Pre-measured and pre-blended, dried aggregate and binder	<b>Working time</b>	40 min at 10°C 30 min at 20°C
<b>Colour</b>	Grey	<b>Working temperature</b>	≥ 2°C
<b>Packaging</b>	25 kg Bag	<b>Compressive strength (20°C)</b>	14 days: 25 MPa 28 days: 35 MPa
<b>Bed depth range</b>	10-70 mm	<b>Permeability</b>	≥ 5 x 10 <sup>-5</sup> m/s
<b>Typical water used</b>	3 litres per 25 kg	<b>Capillary rise</b>	< 20 mm
<b>Typical consumption / coverage</b>	25 mm: 55 kg/m <sup>2</sup> 40 mm: 88 kg/m <sup>2</sup> 50 mm: 110 kg/m <sup>2</sup>	<b>Modulus of elasticity</b>	(18,000 ± 3,500) MPa
<b>Packages per pallet</b>	40 or 48	<b>Storage life</b>	2 years from manufacture date
		<b>Compliance</b>	BS 7533-101:2021

# Pre-blended Bedding Mortar



## **Step 1** Clean paving units



## **Step 2** Mix with water



## **Step 3** Clean area



## **Step 4** Place tuffbed bedding mortar



## **Step 5** Brush on the bonding mortar



## **Step 6** Bed unit onto tuffbed mortar



## **Key Information**

Add the water to achieve a mix consistency which should be sticky, but not wet and so that a ball can be formed in the palm of one's hand. Bonding mortar where required should be applied using a stiff brush. Allow 24 hours to set before walking on the paving.

For trafficked applications, where there is a concrete base present, a layer of tuffbond priming mortar should be applied to the concrete base before the mixed bedding mortar is put in place.

**tuffbond**<sup>®</sup>

**Scan QR Code  
for a Video  
Demonstration**



## Key Features

- Creates the essential 2 MPa adhesion bond between bedding and the paving element as described in BS7533-101.
- For small scale paved areas in; natural stone, porcelain, concrete and granite paving units.
- Applied as a 2–3 mm thick coat.
- Polymer and resin free.

tuffbond is a bonding and priming mortar used to enhance the adhesion bond between the paving units and bedding mortar and where present, between the bedding mortar and supporting concrete structure.



For ease of use on smaller projects tuffbond has been packaged in pre-measured sachets contained in a reusable, recyclable tub. With individual sachets, only the required amount of tuffbond is used and wastage is minimised.

## Technical Specification

<b>Colour</b>	Grey	<b>Length of working time</b>	30 min at 20°C
<b>Packaging</b>	12 kg Tub (4x 3 kg Sachets)	<b>Working Temperature</b>	≥ 2°C
<b>Adhesion</b>	≥ 2 MPa	<b>Packages per pallet</b>	48
<b>Consumption</b>	8 m <sup>2</sup> per tub (2 mm coat)	<b>Pallet weight</b>	606 kg inc. pallet
<b>Typical water used</b>	750 ml to 1 litre per 3 kg sachet	<b>Shelf life</b>	2 years from manufacture date
		<b>Compliance</b>	BS 7533-101:2021

# Bonding and Priming Mortar



## Step 1 Prepare Equipment



## Step 2 Wash underside of paving units



## Step 3 Add 750ml - 1L of clean water per sachet to the tub



## Step 4 Add sachet to the tub and mix



## Step 5 Brush apply 2-3mm thick coat to the paving unit



## Step 6 Place primed paving unit on bedding



## Key Information

Do **NOT** allow tuffbond to dry, apply immediately prior to placing paving unit.  
When laying on an in-situ or reinforced concrete base, tuffbond should also be applied to the clean surface prior to placing the bedding mortar.

tuffbond is applied with a stiff brush to the entire underside of each paving unit.

## Key Features

- Dry application jointing mortar
- Cement based for minimum 20 year durability
- Polymer and resin free
- Four colours available; Flint, Anthracite, Hessian and Cream
- For paved areas in; natural stone, porcelain, concrete and granite paving units
- Minimal maintenance required
- Supplied in 12.5 kg tubs with a coverage of up to 31 m<sup>2</sup>

tuffjoint is a revolutionary cement based dry application jointing mortar which does not contain resin or polymer so has full mortar durability with easy no mess application.

tuffjoint has been produced and tested for easy use and for high quality, hard wearing jointing with no mixing required.



Sweep in the mortar using a soft rubber foam squeegee and/or a broom/brush. When joints are full, remove dry excess tuffjoint from the paving, and return to the tub.

Apply water using a hose set on a fine mist spray until water is pooling on the joint surface. Use a Washboy to clean the paving units.



# Dry-Apply Jointing Mortar



www.steintec.co.uk  
/tuffjoint#video

## Technical Specification

<b>Colour</b>	Flint, Anthracite, Hessian and Cream
<b>Packaging</b>	12.5 kg Tub
<b>Joint width</b>	≥ 4 mm
<b>Typical coverage</b>	<a href="http://www.steintec.co.uk/utility-calculator/">www.steintec.co.uk/utility-calculator/</a>
<b>Typical water used</b>	Hose mist spray over joints
<b>Packages per pallet</b>	64
<b>Pallet weight</b>	798 kg inc. pallet
<b>Working time</b>	30 min at 20°C, once wet
<b>Working temperature</b>	≥ 2°C
<b>Storage life <sup>[2]</sup></b>	2 years from manufacture date



<sup>[1]</sup> Pure cement based mortars are known to continue gaining strength over time, unlike resin and polymer based products that deteriorate over time.

<sup>[2]</sup> The content of soluble chromium (VI) is less than 2 ppm. Product performance is unaffected by age.

Paving unit size	Joint width	m <sup>2</sup> per (12.5kg) tub
800 x 800 x 20 mm	4 mm	31 m <sup>2</sup>
600 x 900 x 20 mm	4 mm	28 m <sup>2</sup>
400 x 1200 x 20 mm	4 mm	23 m <sup>2</sup>
600 x 600 x 20 mm	4 mm	23 m <sup>2</sup>
600 x 900 x 20 mm	6 mm	19 m <sup>2</sup>
450 x 900 x 20 mm	6 mm	15 m <sup>2</sup>
600 x 1000 x 20 mm	8 mm	14 m <sup>2</sup>
600 x 900 x 24 mm	8 mm	12 m <sup>2</sup>
600 x 900 x 24 mm	10 mm	9 m <sup>2</sup>
600 x 600 x 24 mm	10 mm	8 m <sup>2</sup>
600 x 900 x 50 mm	10 mm	4 m <sup>2</sup>
600 x 600 x 50 mm	10 mm	3 m <sup>2</sup>



Flint



Anthracite



Hessian



Cream

*N.B. Printed colours are indicative only.*

*Physical samples are indicative for the colour and finish at the time of installation.*

*Colours may vary from batch to batch.*

Online calculator available at [www.steintec.co.uk/utility-calculator/](http://www.steintec.co.uk/utility-calculator/)

Scan QR Code  
for a Video  
Demonstration



### Step 1 Prepare Equipment



### Step 2 Pour tuffjoint over the paving.



### Step 3 Spread the mortar into the joints.



### Step 4 Return dry excess to the tub for future use.



### Step 5 Use a fine mist spray, all joints should be ponding.



### Step 6 Clean using a Washboy or Washboy Pro Kit.



# Application

## Key Information

- **DO** use a fine mist spray of water to avoid dislodging the product.
- **CAN** be used on damp or wet paving, excess water must be removed.
- **DO** use the right equipment for the installation and cleaning process i.e. Soft foam rubber squeegee, Washboy with rollers and sponge float.
- **DO** check weather forecast before installing. Cover paved area post installation if rain is forecast within 6 hours, to avoid the rain dislodging the mortar.
- **DO NOT** install when raining.

Only use a soft foam rubber squeegee or a broom/brush to spread tuffjoint. A hard rubber squeegee will not pull and push the mortar into the joints. Diagonal swipes allow for the soft foam rubber squeegee to move the mortar without pulling mortar back out of the joints.

Only return dry unused mortar to the tub. Wet or damp excess tuffjoint can not be reused and should be disposed of.

Use a fine mist to water the tuffjoint until water is pooling on the joint surface, do NOT spray water directly into the joints or use a pressure washer as this will wash out the tuffjoint.

The joints may need topping up after watering, as the water added will push the mortar into any voids in the joints. Pour mortar onto affected areas and repeat process.

Use flat diagonal swipes across the paving to remove remaining tuffjoint from the surface. Clean the sponge float using the Washboy after each swipe. Ensure no standing water is left on joints or paving units.

Once all the excess tuffjoint has been cleaned from the paving surface, leave to dry overnight. The paving and joints can be jet washed after 14 days.

We recommend the use of Steintec's permeable bedding & bonding mortars to ensure correct installation, in accordance with the British Standard BS 7533:101 & 102. The use of sand & cement in the bedding layer may cause moisture related issues.



## Key Features

- Self compacting jointing slurry mortar
- For smaller commercial, domestic, bound construction pavements, driveways and patios
- Four colours available; Natural Grey, Mid Grey, Dark Grey, Beige
- For paved areas in; natural stone, porcelain, concrete and granite paving units
- Complies with BS 7533:101
- Minimal maintenance required
- Polymer and resin free.

Convenient and easy to use jointing mortar.

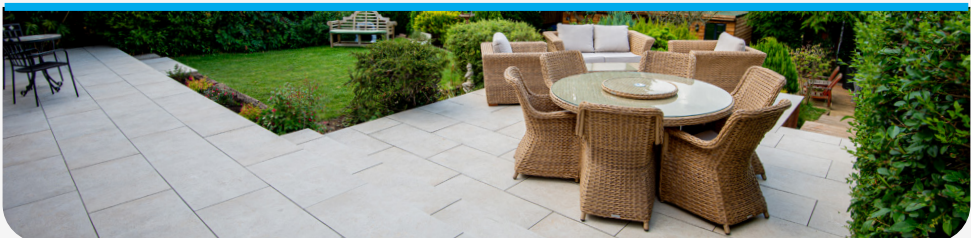
Requires just 1 litre of clean water per 6 kg sachet added to the tub and mixed with a paddle mixer, to be ready to go.

Ease of use makes tuffgrout ideal for smaller projects including driveways, pavements and patios.

tuffgrout has been developed to make things as easy as possible for all users. Supplied in a reusable and recyclable tub.

The individual sachets in each tub ensure the correct amount of tuffgrout is used and wastage is minimised.

The carefully measured contents of each sachet are mixed with exactly 1 litre of water.



# Jointing Mortar



www.steintec.co.uk  
/utility-utility/#video

## Technical Specification

<b>Colour</b>	Beige, Natural Grey, Mid Grey & Dark Grey	<b>Elastic modulus</b>	(20,000 ± 4,000) MPa
<b>Packaging</b>	12 kg Tub (2x 6 kg Sachets)	<b>Adhesive bond</b>	1.5 MPa
<b>Joint width</b>	≥ 4 mm	<b>Storage life</b>	2 years from manufacture date
<b>Typical water used</b>	1 litre per 6 kg sachet	<b>Compliance</b>	BS 7533-101
<b>Typical coverage</b>	<a href="http://www.steintec.co.uk/utility-calculator/">www.steintec.co.uk/utility-calculator/</a>		
<b>Packages per pallet</b>	48		
<b>Pallet weight</b>	606 kg inc. pallet		
<b>Set time</b>	24 hours		
<b>Working time</b>	30 min at 20°C		
<b>Working temperature</b>	≥ 2°C		
<b>Compressive strength (20°C)</b>	28 days: 25 MPa		
<b>Flexural strength</b>	3.5 MPa		

Natural Grey  
Mid Grey  
Dark Grey  
Beige

Paving unit size	Joint width	m <sup>2</sup> per (12kg) tub
600 x 1200 x 20 mm	4 mm	27 m <sup>2</sup>
600 x 900 x 20 mm	4 mm	24 m <sup>2</sup>
600 x 600 x 20 mm	4 mm	20 m <sup>2</sup>
600 x 900 x 20 mm	6 mm	16 m <sup>2</sup>
600 x 900 x 24 mm	8 mm	10 m <sup>2</sup>
600 x 900 x 24 mm	10 mm	8 m <sup>2</sup>
600 x 600 x 24 mm	10 mm	7 m <sup>2</sup>
600 x 900 x 50 mm	10 mm	4 m <sup>2</sup>
600 x 600 x 50 mm	10 mm	3 m <sup>2</sup>



N.B. Printed colours are indicative only.

Physical samples are indicative for the colour and finish at the time of installation.

Colours may vary from batch to batch.

Online calculator available at [www.steintec.co.uk/utility-calculator/](http://www.steintec.co.uk/utility-calculator/)

Scan QR Code  
for a Video  
Demonstration



[www.steintec.co.uk/tufftopUtility/#video](http://www.steintec.co.uk/tufftopUtility/#video)

**Step 1**  
**Prepare**  
**Equipment**



**Step 2**  
**Wash and wet**  
**paving & remove**  
**any pooling water**



**Step 3**  
**Add 1L of water**  
**per sachet to tub**



**Step 4**  
**Add sachet to tub**  
**and mix**



**Step 5**  
**Pour tuffgrout**  
**over wet paving**



**Step 6**  
**Spread tuffgrout**  
**to fill joints**



# Application

## Step 7 Clean using a squeegee with water and/or a sponge float



## Key Information

It is important the pavement is entirely wet but not drenched, to aid application, the complete filling of the joints and the final cleaning process. Wipe away any pooling or standing water using a clean squeegee.

Do **NOT** let mortar dry on the surface, spray with a light mist to keep moist while applying & cleaning, if necessary. Do **NOT** drench the the paving with water while cleaning as this may cause colour pigments to be washed out of the joints.

Ensure no standing water is left on joints or paving units.

We recommend the use of Steintec's permeable bedding & bonding mortars to ensure correct installation, in accordance with the British Standard BS 7533:101.

The use of sand & cement in the bedding layer may cause moisture related issues.

## Key Features

- Economically extends life of old paving.
- Dramatically improves appearance.
- Quick and easy to apply.
- Saves time and money.
- Repairs cracked, broken and missing jointing mortar.
- Stabilises loose and rocking pavers.
- For all types of paving module; Setts, slabs, flags, blocks, etc.
- Paths, patios, pavements and driveways.

tuffix can rejuvenate old paving, giving it a new lease of life, alleviating the need to fully lift and re-lay.

Old paving, often laid on sand/cement, which has cracked and broken joints and rocking pavers can be renovated with tuffix.



The thick flowable slurry mortar fills voids and replenishes joints to provide a structural repair.

Three simple steps to replenish damaged paving with tuffix;

1. Remove all loose material from joints and thoroughly clean, ideally with a pressure washer.
2. Pour tuffix in to the joints.
3. Remove any excess using a sponge float.

Portions of the existing jointing mortar that are still sound and secure can be left in place and the tuffix applied over and around.

The longevity of a repair carried out with tuffix will depend on the condition and quality of the existing structure, how heavily it is trafficked, and how well it is prepared.

# High Performance Paving Repair Mortar



## Technical Information

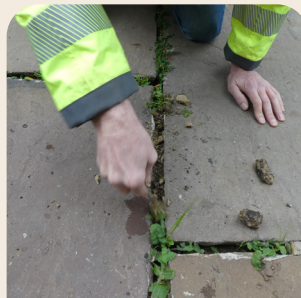
Colour	Natural Grey	Compressive strength (20°C)	58 MPa
Packaging	11 kg Tub (2x 5.5 kg Sachets)	Flexural strength	3 MPa
Joint width	≥ 1 mm	Elastic modulus	(20,000 ± 4,000) MPa
Typical water used	1 L per 5.5 kg sachet	Storage life	2 years from manufacture date
Packages per pallet	48		
Pallet weight	558 kg inc. pallet		
Set time	3 hours		
Working time	15-30 min at 20°C		
Working temperature	≥ -2°C		



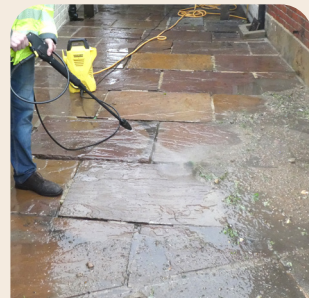
### Step 1 Prepare equipment



### Step 2 Remove organic material and loose jointing



### Step 3 Thoroughly prepare joints



### Key Information

It is important the pavement is entirely wet but not drenched, to aid application, the complete filling of the joints and the final cleaning process. Do **NOT** let mortar dry on the surface, spray with a light mist to keep moist while applying and cleaning, if necessary. Do **NOT** drench the the paving with water while cleaning as this may cause colour pigments to be washed out of the joints. Only mix and apply one sachet at a time. Do **NOT** mix more material than will be used within about 15 minutes at an ambient 20 °C.

# Application

**Step 4**  
Add 1L of water  
per sachet used



**Step 5**  
Add sachet and  
mix



**Step 6**  
Pour mortar onto  
wet paving



**Step 7**  
Spread mortar to fill joints and remove  
excess



**Step 8**  
Clean using a  
squeegee or  
sponge float



# Tools & Equipment

While few special tools are required to use tuffbau's range of products, there are some that can make life easier and massively improve efficiency on site.

The range of products illustrated here is a selection of favourites based on our own experience and feedback from the trade.

## Mixing

### Paddle Mixers

The electric paddle mixer is ideal for the rapid, thorough and even mixing of many of our mortars.



## Cleaning & Hand Tools

### Washboy kit

The 23-litre bucket comes supplied with a sponge faced hand trowel. It is very simple to use and has an easy to clean double roller that sits on top of the bucket and makes light work of cleaning the sponge.



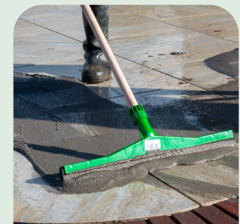
### Halder Hammers

Superplastic & rubber interchangeable inserts with either a cast iron or aluminium housing and a wooden handle. Designed for contractors working in paving.



### Soft Foam Rubber Squeegee

For the application of slurry grout. Designed to push materials into the paving joints, as well as removing surface residues.



# weiss<sup>®</sup> by Steintec<sup>®</sup>

## Pavement Care: cleaning

Sizes for Weiss products range from 150 ml samples to 10 L containers.

Please contact our technical support team to check on product compatibility before purchasing.

### Extra-KT: Oil & Grease Stain Remover



Removes stains from BBQ grease, engine oil and more.  
Easy to apply from a 1L pouch.  
Simple 3 step process.  
Apply, allow to dry and sweep up.



### Pave Clean Pro: pH Neutral Paving Cleaner



For routine and spot cleaning on all paving types.  
Effective at removing food, oil, grease and rubber tyre marks. Acid-free concentrate, diluted with water.



### CSR Power: Cement Stain Remover



Removes stubborn cement stains from acid resistant stone, porcelain, clay paving, masonry and brickwork.  
Effective at removing stains left by mortar and concrete.



### CSR Extra: Polymer Modified Mortar Stain Remover



Removes cement and mortar haze.  
Effective on difficult to remove polymer modified cement products, calcium aluminate and hybrid mortars



# Pavement Care: Protection

Sizes for Weiss products range from 150 ml samples to 10 L containers.

Please contact our technical support team to check on product compatibility before purchasing.

## Pre-Install: Protection During Installation



For all types of paving units.  
Minimises the risk of contamination with oil or grime and cement staining during the construction process.



## Stain Protect Pro: Invisible Stain Protection



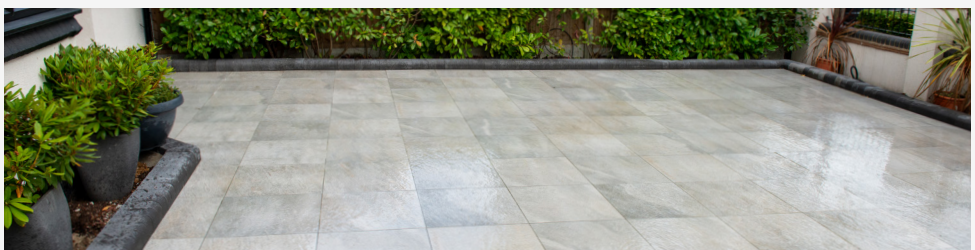
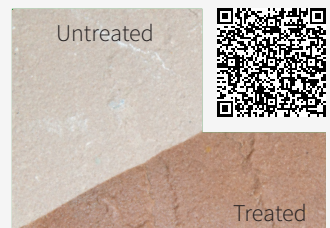
A professional surface impregnator for all paving types.  
Invisible protection against staining from oil, fat and grime.  
No change to colour or slip resistance.



## Colour Enhancer: Wet Look Paving Protection



A wet-look colour enhancement for all paving types.  
Brighter colours together with protection against staining.  
No change to slip resistance.



# tuffgrit®

## Key Features

- Water permeable (SuDS)
- 2-6 mm natural aggregate
- Available in 25kg bags or ~850 kg bulk bags
- Highly durable
- As described in EN 13242
- Complies with BS7533-101:2021

A crushed igneous rock aggregate suitable for use as the laying course material for conventional unbound modular pavements and as the laying course and jointing material in SuDS permeable unbound modular pavements.

Applications include driveways, public realm, commercial areas, patios and pavements using any paving units.

tuffgrit is blended for optimum interlock of the angular particles, actively extending the durability of unbound/flexible pavements.



## Technical Specification

<b>Colour</b>	Grey	<b>Packages per pallet</b>	40 bags or 1 Bulk bag
<b>Packaging</b>	Bag or Bulk bag	<b>NBS sections</b>	Q24 Q25
<b>Aggregate size</b>	2-6 mm	<b>Compliance</b>	BS7533-101:2021
<b>Joint width</b>	8+ mm		
<b>Packaging weight</b>	25 kg or ~850 kg (dry weight)		
<b>Pallet weight (inc. pallet)</b>	1,030 kg (bag) ~880 kg (bulk bag)		

# Permeable Aggregate

## Clay pavers and concrete blocks with nibs > 5 mm

**Step 1**  
Screed tuffgrit  
and compact  
bedding before  
laying units



**Step 2**  
Units laid  
touching



## Cropped Setts

**Step 1**  
Spread loose  
tuffgrit bedding



## Cropped Setts

**Step 2**  
Tap setts down  
tightly together  
and to level



## All

**Step 3**  
Sweep tuffgrit  
into joints



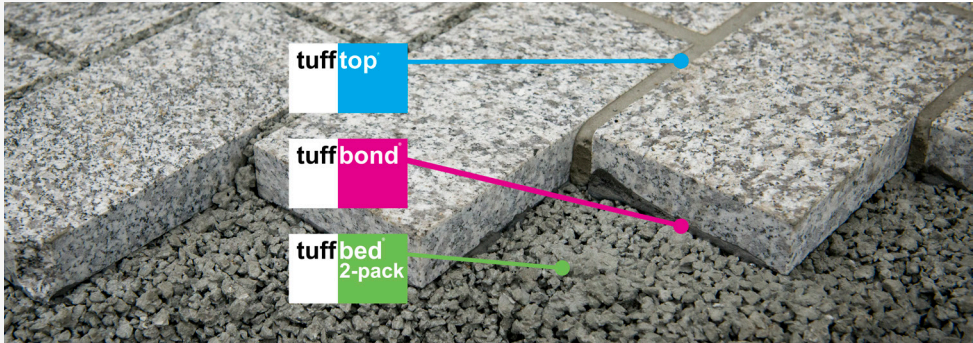
**Step 4**  
Compact and  
repeat steps 3 & 4  
until joints are full



# Commerical Mortars

Steintec's range of high-performance products has been developed to provide complete bedding and jointing solutions. All our commerical mortars achieve full compliance with the BS7533-101:2021 Standard for modular paving.

More information on these mortars can be found on our website; [www.steintec.co.uk](http://www.steintec.co.uk)



## Type 35, Permeable, Low Carbon Bedding Mortar for paving

**tuffbed**  
2-pack

High performance low carbon permeable bedding mortar.  
Mix with four bags of tuffgrit aggregate for high strength bedding.



- Fully water permeable and frost resistant.
- Low carbon footprint  
(visit [www.steintec.co.uk](http://www.steintec.co.uk) for information).
- 40 min working time (10°C).
- ≥ 20 mm bedding depth.
- Helps prevent moisture related paving issues such as efflorescence.
- Fully complies with BS 7533-101:2021 type 25 & type 35.
- Suited to commercial & public realm projects.
- Compatible with all types of paving; granite, natural stone, concrete and porcelain units.

Colour	Grey
Packaging	25 kg Bag
Bed depth	≥ 20 mm (40 mm recommended)
Typical water used	7 litres per 125 kg batch
Typical coverage	30 mm: 60 kg/m <sup>2</sup> 40 mm: 80 kg/m <sup>2</sup> 50 mm: 100 kg/m <sup>2</sup>
Packages per pallet	40
Pallet weight	1,030 kg inc. pallet
Working time	40 min at 10°C, 30 min at 20°C
Working temperature	≥ 3°C
Compressive strength (20°C)	14 days: ≥ 25 MPa 28 days: ≥ 35 MPa
Flexural strength	≥ 7 N/mm <sup>2</sup>
Permeability	> 5.5 x 10 <sup>-4</sup> m/s
Storage life	2 years from manufacture date

## High Performance Bonding (Priming) Mortar

**tuffbond**

High performance bonding and priming.  
Essential adhesion bond between bedding and the paving element.



- Creates the essential adhesion bond between bedding and the paving element.
- Applied to supporting concrete structures.
- High resistance to shear forces and thermal stresses.
- Polymer and resin free.
- Provides full BS 7533 compliance when used in conjunction with tuffbed or tuffbed 2-Pack and tufftop jointing mortar.

<b>Colour</b>	Grey
<b>Packaging</b>	25 kg Bag
<b>Adhesion</b>	2 MPa
<b>Consumption</b>	1.5 kg/m <sup>2</sup> per 2 mm layer
<b>Typical water used</b>	6.75 litres per 25 kg
<b>Length of working time</b>	40 min at 10°C 30 min at 20°C
<b>Packages per pallet</b>	40 or 48
<b>Pallet weight</b>	1,030 or 1,230 kg inc. pallet
<b>Storage life</b>	2 years from manufacture date

## Type 40, High Performance, Pavement Jointing Mortar

**tufftop**

High performance slurry jointing mortar.  
Extremely high durability and low maintenance.



- Self compacting jointing slurry mortar.
- Four colours available.
- Exceeds requirements of BS 7533-101:2021 for Type 25 & Type 40 jointing mortars.
- Compatible with all types of paving; granite, natural stone, concrete and porcelain units.
- Extremely high durability and low maintenance.
- Polymer and resin free.
- Easy to clean.

<b>Colour</b>	Beige, Natural Grey, Mid Grey & Dark Grey
<b>Packaging</b>	25 kg Bag
<b>Joint width</b>	≥ 3 mm
<b>Typical water used</b>	4 litres per 25 kg
<b>Typical coverage</b>	<a href="http://www.steintec.co.uk/calculator/">www.steintec.co.uk/calculator/</a>
<b>Packages per pallet</b>	40 or 48
<b>Pallet weight</b>	1,030 or 1,230 kg inc. pallet
<b>Set time</b>	24 hours
<b>Working time</b>	30 min at 20°C
<b>Working temperature</b>	≥ 2°C
<b>Compressive strength (20°C)</b>	14 days: 30 MPa 28 days: 45 MPa
<b>Flexural strength</b>	6 MPa
<b>Elastic modulus</b>	(20,000 ± 4,000) MPa
<b>Adhesive Bond</b>	1.5 N/mm <sup>2</sup>
<b>Storage life</b>	2 years from manufacture date

## Fully Permeable SuDS Jointing Mortar



High performance permeable bound jointing mortar.  
Water flows through the joints and bedding (tuffed 2-pack).



- Greater choice for paving units (slabs, flags sets, blocks pavers, large format)
- Free of polymers and resin additives.
- Strong rigid jointing mortar for permanent installation.
- Maintenance, durability, trafficking / loading, versatility.
- Can be lightly jet washed and swept / brushed to keep clean and silt free to maintain aesthetics and permeability.
- Suitable for public spaces with heavy pedestrian traffic, vehicular overrun, domestic patios and driveways.
- No need to regularly top up joints.
- Low maintenance rigid/bound construction
- Lightweight blue / green roof construction

<b>Colour</b>	Dark Grey
<b>Packaging</b>	24 kg Bag (3 x 8 kg sachets)
<b>Joint width</b>	10 - 20 mm
<b>Typical water used</b>	1 litre per 33 kg mix (8kg sachet + 25kg aggregate)
<b>Typical coverage</b>	<a href="http://www.steintec.co.uk/calculator/">www.steintec.co.uk/calculator/</a>
<b>Working time</b>	30 min at 20°C
<b>Working temperature</b>	≥ 2°C
<b>Compressive strength (20°C)</b>	28 days: 25 MPa
<b>Storage life</b>	2 years from manufacture date
<b>Compliance</b>	BS 7533-101:2021



Broadgate Circle, London

## Specialist Rapid Mortar

### tuffset G

Specialist multi-purpose paving mortar. tuffset G can be used for top to bottom reinstatement of an entire paving structure.



- Ready for heavy traffic within 3 hours.
- $\geq 20$  mm bedding depth.
- Multi-purpose: bedding, priming, jointing, emergency repairs & filling around gully and manhole frames in carriageways.
- Available in three colours.
- Free of chemical admixtures, polymers and resins.
- Exceeds the requirements of BS7533-101:2021 for bedding, bonding and jointing.

<b>Colour</b>	Natural Grey, Mid Grey & Dark Grey
<b>Packaging</b>	25 kg Bag
<b>Bed depth</b>	$\geq 20$ mm (40 mm recommended)
<b>Joint width</b>	$\geq 1$ mm
<b>Packages per pallet</b>	40 or 48
<b>Pallet weight</b>	1,030 or 1,230 kg inc. pallet
<b>Set time</b>	3 hours
<b>Working time</b>	15 min at 20°C
<b>Working temperature</b>	$\geq -2^{\circ}\text{C}$
<b>Compressive strength (20°C)</b>	(1:1 mix) bedding: 70 MPa bonding & jointing: 58 MPa
<b>Flexural strength</b>	3 hours: 4 MPa (1:1 mix) 1 day: 6 MPa (1:1 mix)
<b>Elastic modulus</b>	(20,000 $\pm$ 4,000) MPa
<b>Adhesive Bond</b>	3 MPa
<b>Storage life</b>	2 years from manufacture date

## Sixty Minute Cure Manhole-Levelling & Rapid Repair Mortar

### tuffset 60

A supportive high performance mortar for the placing and levelling of iron works and street furniture in carriageways and pavements.



- Rapid setting (60 minutes) and strength gain.
- 20 minute working time.
- Placing and levelling of ironwork in areas of heavy traffic.
- Durable solution for emergency works.
- Frost resistant & highly durable.
- Higher performance alternative to sand and cement mixtures.
- Polymer and resin free.

<b>Colour</b>	Grey
<b>Packaging</b>	25 kg Bag
<b>Bed depth</b>	10 - 50 mm
<b>Typical water used</b>	3 litres per 25 kg
<b>Typical coverage</b>	40 mm: 90 kg/m <sup>2</sup>
<b>Packages per pallet</b>	40 or 48
<b>Pallet weight</b>	1,030 or 1,230 kg inc. pallet
<b>Set time</b>	1 hour
<b>Working time</b>	30 min at 20°C
<b>Working temperature</b>	$\geq 2^{\circ}\text{C}$
<b>Compressive strength (20°C)</b>	1 hr: 25 MPa; 3 hrs: 30 MPa; 24 hrs: 40 MPa
<b>Storage life</b>	2 years from manufacture date



# *Steintec*<sup>®</sup>

high performance paving products

Your *Steintec*<sup>®</sup> Stockist is

Email: [mail@steintec.co.uk](mailto:mail@steintec.co.uk)

Web: [www.steintec.co.uk](http://www.steintec.co.uk)

Phone: 0203 598 9800

1 Northwick Road  
Canvey Island  
Essex  
SS8 0PU  
UK

Version 6.00

UK Based Manufacturer

Steintec is a trading brand of tuffbau Ltd.

Registered in England No. 4376956 - Registered Office: 1 Northwick Road, Canvey Island, Essex, SS8 0PU, UK