

MOTHER'S DAY

— Gift Guide & Catalogue — 2025

SMART
GIFT IDEAS

WE'RE NOW ALSO THE EXTRA VOLUNTEERS YOU NEED!

SECTION 1



HOW TO ORGANISE YOUR MOTHER'S DAY STALL

Pages 1 - 11

Stall prep made easy: Expert tips on gift selection, pricing and getting ready for the big day!

SECTION 2



SHOP GIFTS AND PLACE YOUR ORDER

Pages 12 - 40

Thoughtful gifts students love to give, and parents will love to receive. Our best value-for-money range yet!

FREE FREIGHT

For all orders over \$150
Australia wide

VALUE FOR MONEY

Over 100 gifts priced at
\$4 or less!

EARLY BIRD GIFTS

For orders placed before
midnight 28th February 2025

CONTENTS

Smart Gift Guide

| | |
|--------------|----|
| Introduction | 3 |
| Preparation | 4 |
| Selecting | 6 |
| Pricing | 8 |
| Stall Day | 9 |
| Wrapping Up | 11 |

Gifting Catalogue

| | |
|-------------------------------------|-----------|
| Mugs & Glassware | 12 |
| Travel Mugs & On the Go | 14 |
| Stationery | 16 |
| Photo Frames & Gift Essentials | 18 |
| Home & Garden | 20 |
| Candles | 22 |
| Body Care | 24 |
| Bath Fizzers & Pamper | 26 |
| Personal Care | 28 |
| Keyrings, Bags & Accessories | 30 |
| Jewellery | 32 |
| Kitchen | 34 |
| Grandmother | 36 |
| Order Form | 38 |
| Early Bird & Bonus Gifts | 40 |

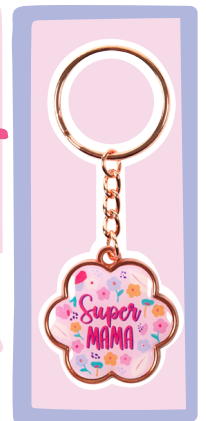
SECTION

1



SECTION

2





SMART GIFT GIVERS!



Before we dive into our exciting Mother’s Day 2025 range, we want to share that this year, we’re approaching Mother’s Day with a fresh perspective!

We’ve gone the extra mile to not only bring you a wonderful range of gifts, but we’re also here to lend a helping hand to the real MVPs of school life – YOU!

Whether you’re a seasoned volunteer or new to the game, we know organising Mother’s Day Stalls can seem like a big task. So, we’re here to help guide you through the process!

Think of us as your extra pair of hands, ready to support you with nearly two decades of experience leading this space. So, strap in because here’s...



How we’ll help make this Mother’s Day Stall not just the best one yet, but the easiest too!



Preparation

Failing to plan is planning to fail! We’ll walk you through our tried-and-true approach to preparation – what questions to ask and what to focus on.



Pages 4 - 5

Selection

With so many wonderful gifts it can be hard to choose, but don’t worry – we’ve got you covered! We’ll guide you on how many to buy, the best ranges to include, and tips to stay under budget.



Pages 6 - 7

Pricing

This year, we’re offering three suggested sell price options for each product – whether you’re focused on maximising fundraising, creating a shopping experience, or striking a balance in between, it’s all there!



Page 8

Stall Day

Stall Day can feel overwhelming, but don’t worry – once again, we’ve got you! With our top tips and layout ideas, we make the process smooth from start to finish.



Pages 9 - 10

SOMETHING TO REMEMBER

School stalls are about more than just finding a gift for Mum – they’re about creating a special experience for your students. That’s what we’re here for: to help you keep things simple and focus on the magic of that moment. The students won’t remember the nitty-gritty details; all they’ll remember is the pride they feel when picking the perfect gift for Mum – and that’s what truly matters!

PREPARATION

Preparation is KEY to a smooth, fun stall! And let's remember the heart of our goal: the kids! Their joy is what matters most. So, when organising, keep it easy-breezy; it doesn't need to be overcomplicated.

Think of this preparation as a quick fact-finding mission: a P&C meeting, a few chats, and a quick Google search should do the trick. By focusing on the basics below, you will be set up for success.

PLUS, if your school has run stalls before, even better! Use past stalls as a guide for planning your budget and timeline. But if this is your first stall or you want to build on past successes - we've got you!



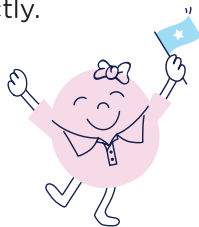
Here's our quick list of essential must-knows before you get started

Goal

Beyond making stall day a hit with your students, it's important to set a financial goal for your stall. We like to think of it in three ways:

- 1 Are you aiming to maximise fundraising?
- 2 Is fundraising not a priority, with the focus on students simply enjoying the stall?
- 3 Or is the goal somewhere in between? This is our Smart Gift Ideas (SGI) recommendation!

Once you've decided on your goal and selected your gifts, head to Page 8, where we'll guide you through pricing to match your plan perfectly.



Budget

While we can't set your budget for you, we can promise that no matter the budget, if you follow our process every student will leave the stall smiling. All you need to do is confirm available funds and we'll guide you!



Time

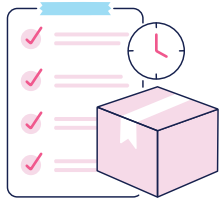
The time that you and your P&C have doesn't impact preparations much; it may just limit the extra additional touches we can add to Stall Day. Until then, follow our process to prep, select, and price your gifts in minutes, not hours.



Logistics

Often overlooked, a quick project plan can go a long way in keeping things on track. Grab your calendar and set reminders for key dates to help you stay calm and organised. Here's what we recommend planning:

- 1 Order date:** Aim to place your order by the end of February – or at the latest, by the end of March – as stock sells out quickly, and once it's gone, it's gone!
- 2 Delivery and unpacking:** Decide whether gifts will be delivered to the school or home and plan when you'll unpack your order.
- 3 Stall day and preparations:** Schedule your stall day and related prep. Pages 9 & 10 will guide you through it all!



Research

Just like a project plan, a research session ensures stall preparations are a breeze. Here's a few key things to keep in mind:

- 1** Shipping fees & delivery time frames.
- 2** Whether prices include GST.
- 3** Minimum order quantities.
- 4** If products are sold in packs or specific assortments.

Check out our **FAQs** for our answers to the above!



KEY INSIGHTS

Knowing the following will help you make informed decisions when selecting and pricing your gifts, as well as promoting Stall Day:

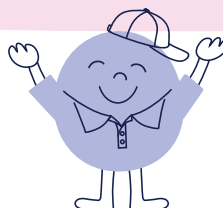
Knowing the total number of students at the school.

Helps with selecting



The average amount each student brings to spend on Stall Day.

Helps with pricing



The general sentiment within the community about the Stall.

Helps with promoting



SELECTING

Now that we've done the legwork and ticked all the preparation boxes, it's time to select your gifts! Before we dive in, here are a few quick things to keep in mind:

We keep it simple – remember the stall doesn't need to be complicated.

If you want more details on any of our suggestions / steps, **give us a call**.

Trust the process! Follow the steps below, and everything will fall into place.

CRUNCHING THE NUMBERS

Begin by crunching some numbers to create your gift-buying blueprint. Here's an example:

Smart Gift Ideas Primary School



Budget
\$1500

Students
200



1

Gift Bag Calculator

We recommend purchasing a Gift Bag for every student - we'll explain why later! To calculate how many packs you need:

Number of students ÷ 12
(Gift Bags come in packs of 12)

$200 \div 12 = 17 \text{ Packs}$
(rounded up)



2

Calculate Gifts Required

We recommend buying **1.5 gifts** per student to account for those eager little shoppers who want to buy more than just one! Here's the simple math:

Number of students x 1.5

$200 \times 1.5 = 300 \text{ gifts}$
(round up if needed)



3

Your Budget Per Gift

Start by deducting the cost of the Gift Bags from your budget:

$\$1,500 - (17 \times \$12) =$
 $\$1,296$

Finally, calculate your budget per gift:

$\$1,296 \div 300 = \$4.30!$
(round down to the nearest 5¢)



And just like that, your gift-buying blueprint is good to go!

NOW COMES THE FUN PART!!

With our gift-buying blueprint set, it's time to dive into the exciting part – picking your gifts!

Before we begin, here are a few quick things to keep in mind:

Choose **10 different** gifts for your stall – trust us, this will all make sense when you see our Stall Day setup.

Here's the quick math:

Total gifts required ÷ 10 = Quantity per gift

In our example
 $300 \div 10 = 30$ units per gift

Our Gift-Buying Blueprint

Max spend per gift
\$4.30

Number of gifts required
300

Number of gifts to choose
10

Units to buy per gift
30



Now, for the question we get all the time: What to buy?

Our formula goes like this:

- | | |
|---|---------|
| ✓ 2 x Gifts from Mugs & Glassware | Page 12 |
| ✓ 1 x Gift from Travel Mugs & On The Go | Page 14 |
| ✓ 1 x Gift from Stationery | Page 16 |
| ✓ 1 x Gift from Photo Frames & Gift Essentials | Page 18 |
| ✓ 1 x Gift from Candles | Page 22 |
| ✓ 1 x Gift from Grandmother | Page 36 |
| ✓ 3 x Gifts from any other ranges that you feel align with your community | |

NEED A HAND?

Text '**HELP**' to
0487 094 302 with:

Your email
Number of students
Your budget

... and we'll draft an
order for you!



Things to Keep in Mind

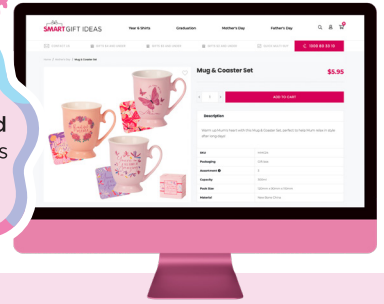
- 1 Some products are sold in packs of 6, 12, or 24, so adjust quantities to ensure you have enough gifts.
- 2 For lower-priced ranges, bundle items (e.g. a pen with a notebook) to meet your target price.
- 3 If budget allows, add Gift Cards to match your Gift Bags – they're a simple way to elevate Stall Day, as we'll explain later!

PRICING

One of our most common questions is about pricing! Like the age-old 'How long is a piece of string?', pricing depends on your goals and your community's expectations. But don't worry - we've got you covered with these tried-and-true tiers:

RECOMMENDED STALL PRICE \$\$\$

NEW!
Find recommended pricing for all 3 tiers in each product's description online



1

Not Fundraising

If fundraising isn't your priority, this tier focuses purely on community engagement - keeping costs low while giving students a special shopping experience.

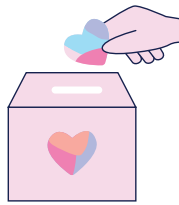
Tip:

Selling gifts at near cost requires a good float of gold coins and some quick math skills on Stall Day.

2

Fundraising

If you've got big goals, this is your tier! Selling each gift - or small bundles - at \$10 or \$15 can often raise funds equal to your budget (or even more!).



3

S&I Recommendation

Displayed as RSP throughout the catalogue, this is the best of both worlds! Gifts are priced at \$5 or \$10, keeping Stall Day simple and fundraising goals achievable.

Depending on your budget, purchase quantity, and items selected, this tier can fundraise anywhere from \$200 to over \$1,000.

Once you've picked the tier that aligns with your goals, it's time to set prices. Head to our website and look up your product. Each description includes suggested sell prices for all three tiers. While some tiers may have the same price, it all balances out in the end.

HELPFUL TIPS

Request our Order Template - complete with formulas and steps to follow.

Text '**TEMPLATE**' to **0487 094 302** with your email, and we'll send it straight to your inbox!



Review your costs and profits - adjust as needed by tweaking prices or removing extras like Gift Cards until you're happy.

Remember, our prices are just recommendations to keep things simple - you know your community best, so feel free to tweak them as needed!



Ready to place your order? Choose from three easy options:

- 1 Shop online.
- 2 Fill out the order form on Page 38.
- 3 Scan the QR code to use our Quick Multi-Buy feature.



STALL DAY - PREPARATION

By now, you've selected your gifts, set your prices, and placed your order – so it's time to plan for Stall Day itself!

We break Stall Day into two parts: preparation and the big day. Preparation doesn't have to be overwhelming, and we're here to guide you every step of the way.

To keep things manageable, we've created a 5-week email series starting in March

Each week, you'll get simple, actionable tasks that take no more than 30 minutes – think sending a few emails, making a couple of calls, or even tackling it during your P&C meeting.

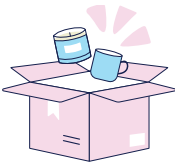
If you haven't already, **subscribe to our newsletter** to follow along and make your Stall Day prep a breeze!

HERE'S WHAT TO EXPECT

Week 1

Unpack

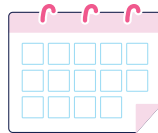
We'll show you how we prep and pack your orders to make unpacking and checking inventory a breeze.



Week 2

Plan

It's time to nail down the when and where of your stall. We'll also walk you through a run sheet for a smooth event day.



Week 3

Prepare

Let's talk about the essentials – like who's available to lend a hand on the day and organising a cash float for change.



Week 4

Communication

Communication is KEY! This week, we'll share tips for promoting your stall and creating some buzz.



Week 5

Set Up

The icing on the cake! Think tablecloths, bunting, price cards, and balloons to add those final touches.



PLUS!

We'll send you a ton of **free resources**

Subscribe to our newsletter and don't miss an update!



STALL DAY – THE BIG DAY

After our Stall Day preparation email series, it's time to focus on the big day! Starting early April, we'll send another series straight to your inbox, sharing our winning Stall Day setup.

Our formula makes for a stress-free, fun day of gifting galore. PLUS, our tips ensure students avoid decision overload and gift envy when the 'good ones' sell out early.

Subscribe to our **newsletter** so you don't miss these must-know tips! Here's a teaser of what's to come:

The Smart Gift Ideas Stall Day Set Up

1
Volunteers
We'll guide you through the ideal number of volunteers and their roles!

2
Stall Setup
Learn how to create a simple, fun setup that maximises efficiency and student enjoyment!

3
Extra Purchases
We have tips for managing students to keep things fair, whether they're buying one gift or more!

4
Logistics
From timing to smooth operations, we'll walk you through all the must-knows!

7
Inventory Management
We'll help ensure you never run out of gifts on Stall Day – how good is that?!

6
Card Station
Learn how to add a little extra love with our Card Station – making Mother's Day extra special.

5
Staff Coordination
Get school staff involved (even without them realising it) with easy coordination tips.

Subscribe to our newsletter and don't miss an update!



WRAPPING UP

With our overview of how to prepare, select, and price completed - and your subscription to our Stall Day email series sorted - it's time to **wrap up!**

I have to admit - when I first wrote this Gift Guide (yes, breaking the fourth wall here!), it was way too long. Honestly, it was probably two or three times the length of what you've just read!

Thankfully, Mel (one of our fabulous Designers) reminded me we only had 10 pages to work with. So, after much pain (and Mel's gentle but firm encouragement), I trimmed it down to what you see here.

Why am I telling you this? To remind you that subscribing to our newsletter is absolutely worth it! Each week, it'll be packed with all the extra tips, tricks, and game-changing hacks I couldn't (or wasn't allowed to) include here.

Beyond that, I want to reiterate we truly want to be the extra volunteers you need. Our mission is to help guide you every step of the way to make your 2025 Mother's Day Stall simple, stress-free, and - most importantly - FUN!



**So, use us - call, text, or email
- We're HERE TO HELP!**



If you need clarification on anything in this Gift Guide or our newsletters, don't hesitate to reach out. Ask for me (Tom), and I'll happily walk you through everything in more detail.

Or better yet, here's my personal mobile: 0439 660 623. I know many of you will be working on your stalls outside business hours, so I'll be here if needed. Call or text me anytime, and I'll be happy to answer your questions.



So what are you waiting for!?

If you haven't already, flip the page and **start browsing** our fun-filled, fabulous **Mother's Day 2025** range.



THANK YOU!

FOR THE FIRST 100 USERS!

As a thank you for reading, following along, and sharing our enthusiasm, you will receive 10% off your Mother's Day order.

10% OFF

USE CODE: GIFTGUIDE10



MUGS & GLASSWARE



\$5.95 ea RSP \$10

SNUGGLE MUG | SNU24

Average size: 140mm x 105mm x 110mm. 450ml. 4 assorted. Ceramic. Plain Box.



\$7.95 ea RSP \$10

CUP & SAUCER SET | CUP24

183mm x 150mm x 72mm. 220ml. 2 assorted. Ceramic. Gift Box.



\$3.75 ea RSP \$10

LOVE MUG | LOV24

130mm x 85mm x 90mm. 350ml. 3 assorted. New Bone China. Gift Box.



\$5.95 ea RSP \$10

MUG & COASTER SET | MMC24

Pack size: 120mm x 90mm x 110mm. 300ml. 3 assorted. New Bone China. Gift Box.





\$2.95 ea RSP \$10

HUG MUG | HUG25

120mm x 90mm x 105mm. 350ml. 3 assorted. Ceramic. Gift Box.



\$5.95 ea RSP \$10

LET'S CELEBRATE GLASS | GLS25

80mm x 195mm. 300ml. 3 assorted. Gift Box.



\$5.85 ea RSP \$10

CHEERS FOR MUM GLASS | MGS25

90mm x 120mm. 540ml. 3 assorted. Gift Box.



\$3.95 ea RSP \$10

CHERISH MUG | CHE25

140mm x 95mm x 75mm. 420ml. 3 assorted. New Bone China. Gift Box.



\$4.95 ea RSP \$10

\$29.70 per pack of 6

DOUBLE WALLED TRAVEL TUMBLER | TUM25

100mm x 230mm. 480ml. 2 assorted. Cello Bag.

TRAVEL MUGS & ON THE GO



\$4.95 ea RSP \$10

SNACK ON THE GO | SNA25

90mm x 165mm. 350ml. 2 assorted. A two part divided container designed to hold yoghurt, fruit, nuts, cereal and more to create the perfect snack. Gift Box.



\$4.95 ea RSP \$10

STAINLESS STEEL THERMAL TRAVEL MUG | SSM24

85mm x 145mm. 350ml. 3 assorted. Premium quality double walled stainless steel with insulative lining and screw top lid. Plain Box.



\$5.95 ea RSP \$10

GLITZ WATER BOTTLE | GBL24

110mm x 75mm x 275mm. 500ml. 2 assorted. Plain Box.



\$5.25 ea RSP \$10

HYDRATE WATER BOTTLE | BTL24

125mm x 90mm x 225mm. 1L. 2 assorted. Cello Bag.



\$4.65 ea RSP \$10

VOGUE ECO THERMAL TRAVEL MUG | ECO24

65mm x 140mm. 350ml. 3 assorted. Silicone band. Gift Box.



\$4.65 ea RSP \$10

SO FRESH SALAD MATE | SAM25

110mm x 200mm. 900ml. 2 assorted. Gift Box.



\$5.25 ea RSP \$10

GO GO THERMAL TRAVEL MUG | GOG25

85mm x 180mm. 450ml. 3 assorted. Premium quality double walled insulation with screw top lid. Stainless steel liner. Gift Box.

"Your customer service (and I must say, value for money) has been amazing!"

Drew & Sandy,
St Francis Catholic Primary School



\$2.95 ea RSP \$5

SUPER MAMA WATER BOTTLE | SWB25

85mm x 73mm x 235mm. 700ml. 2 assorted. Cello Bag.



\$6.95 ea RSP \$10

LUNCH TOTE | LUN25

330mm x 125mm x 330mm. 3 assorted. Cello Bag.



\$2.95 ea RSP \$5

SHAKER MAKER | SHM25

95mm x 190mm. 400ml. 2 assorted. A versatile shaker for making protein shakes or milkshakes. Equipped with a metal shaker ball. Cello Bag.



\$4.65 ea RSP \$10

MUM'S ECO THERMAL TRAVEL MUG | ETM25

90mm x 135mm. 350ml. 3 assorted. Silicone band. Gift Box.

STATIONERY



\$1.85 ea Pair with Weekly Planner & sell for **\$10**

MUM MOMENTS PEN | PEN24
131mm x 12mm x 15mm. 3 assorted. Black ink. Gift Box.



\$4.35 ea RSP \$5

MEAL ORGANISER | OGR24
100mm x 18mm x 200mm. 3 assorted. 60 pages. Hard cover. Cello Bag.



\$2.25 ea RSP \$5

SPECIAL MOMENTS NOTEPAD | PAD24
125mm x 7mm x 75mm. 3 assorted. 60 pages. Cello Bag.



\$2.25 ea Pair with A5 Notebook & sell for **\$10**

FOREVER GORGEOUS METAL PEN | PAS24
140mm x 17mm x 13mm. 2 assorted. Black ink. Gift Box.



\$4.45 ea Pair with Mum Moments Pen & sell for **\$10**

WEEKLY PLANNER | WEE24
240mm x 16mm x 135mm. 3 assorted. 52 pages. Hard cover. Cello Bag.



\$2.45 ea RSP \$5

MOUSE MAT PHOTO FRAME | MOU25
225mm x 5mm x 200mm. Photo size: 150mm x 100mm. 3 assorted. Cello Bag.



\$2.65 ea RSP \$5

MAGNETIC LIST PAD | MLP25
100mm x 10mm x 230mm. 3 assorted. 60 lined pages. Cello Bag.



\$1.00 ea Pair with the A5 Notebook & sell for \$10
SUPER MAMA PEN | PEN25
145mm x 12mm x 15mm. 3 assorted. Black ink. Gift Box.



\$1.75 ea RSP \$5
HEART PEN | HPN25
80mm x 230mm. 2 assorted. Black ink. Cello Bag.



\$3.25 ea RSP \$5
A6 NOTEBOOKS SET OF 2 | SNB25
Pack size: 105mm x 10mm x 145mm. 3 assorted. 80 lined pages per notebook. Soft cover with gold foil. Cello Bag.



\$3.85 ea RSP \$5
A5 NOTEBOOK | A5N25
148mm x 12mm x 210mm. 3 assorted. 160 lined pages. Hard cover with gold foil. Cello Bag.



\$1.25 ea Pair with the Heart Measuring Spoons & sell for \$10
SWEET STICKY NOTEPAD | SNS25
Average size: 80mm x 6mm x 80mm. 2 assorted. 50 pages. Cello Bag.

PHOTO FRAMES & GIFT ESSENTIALS



\$2.95 ea RSP \$5

MUM YOU ARE AMAZING PHOTO FRAME | MUM24
165mm x 12mm x 155mm. Photo size: 145mm x 90mm. 3 assorted. Includes a non-breakable photo insert. Shrink Wrapped.



\$1.95 ea

Group with Mum Tassel Bookmark & Harmony Card & sell for \$5

2 IN 1 MAGNETIC PHOTO FRAME | MAG25
120mm x 100mm. Photo size: 85mm x 85mm. 3 assorted. Pop out the magnet from the middle to insert a photo inside! Cello Bag.



\$1.00 ea
\$12.00 per pack of 12
MEDIUM GIFT BAG | BAG25
180mm x 100mm x 230mm. 3 assorted.



\$0.55 ea
\$6.60 per pack of 12
GIFT CARD WITH ENVELOPE | CRD25
115mm x 80mm. 3 assorted. Blank inside to write your own message. Cello Bag.



\$0.60 ea
\$7.20 per pack of 12
POP UP GIFT CARD WITH ENVELOPE | CRD24
115mm x 125mm. 3 assorted. Blank inside to write your own message. Cello Bag.



\$1.40 ea
\$16.80 per pack of 12
LARGE GIFT BAG WITH GIFT TAG | LGB24
260mm x 120mm x 320mm. 3 assorted.



\$3.95 ea RSP \$10

YOU ARE LOVED CERAMIC PHOTO FRAME | CER25
180mm x 10mm x 140mm. Photo size: 112mm x 72mm. 3 assorted. Includes a non-breakable photo insert. Plain Box.



\$2.95 ea RSP \$5

MUM YOU ARE BEAUTIFUL PHOTO FRAME | MUM25
165mm x 12mm x 155mm. Photo size: 145mm x 90mm. 3 assorted. Includes a non-breakable photo insert. Shrink Wrapped.



\$3.95 ea RSP \$5

FAMILY PHOTO FRAME | FPF25
Average size: 320mm x 15mm x 175mm. Photo size: 140mm x 90mm. 3 assorted. Includes a non-breakable photo insert. Shrink Wrapped.



\$0.40 ea
\$4.80 per pack of 12

Group with Mum Tassel Bookmark & 2 In 1 Magnetic Photo Frame & sell for \$5

HARMONY CARD | HAR25
60mm x 90mm. 3 assorted. Cello Bag.



\$1.00 ea
\$12.00 per pack of 12

Group with Harmony Card & 2 In 1 Magnetic Photo Frame & sell for \$5

MUM TASSEL BOOKMARK | TAS25
60mm x 165mm. 3 assorted. Cello Bag.



\$3.95 ea RSP \$5

SNOW GLOBE PHOTO FRAME | SNW25

Average size: 95mm x 25mm x 95mm. Photo size: 85mm x 85mm. 2 assorted. Plain Box.

\$2.95 ea RSP \$5

SWEET HANGING CHARM | CHM24
Average size: 82mm x 4mm x 210mm. 3 assorted. Ceramic. Cello Bag.

\$8.95 ea RSP \$10

HANGING PLANTER | HGP25
108mm x 600mm. 3 assorted. Ceramic. Plain Box.

Plant not included.

\$4.95 ea RSP \$10

PLANTER SPRAY WATER BOTTLE | PLA25
80mm x 170mm. 200ml. 3 assorted. Plain Box.

\$3.95 ea RSP \$5

SEED POT | SDP25
45mm x 44mm. 3 assorted. Seed varieties: Billy Buttons, Dill or Strawberry. The small plastic pot contains seed sticks and a peat pellet. All made in Australia.

\$5.95 ea RSP \$10

PRETTY POSY VASE | VAS24
100mm x 105mm. 2 assorted. Ceramic. Plain Box.

Flowers not included.



\$4.95 ea RSP \$10

PLANTER PET | PLT25

Average size: 78mm x 60mm x 115mm. 3 assorted. Ceramic. Plain Box.



\$3.45 ea RSP \$5

HEART TRINKET TRAY | HTT25

95mm x 15mm x 92mm. 3 assorted. Ceramic. Plain Box.



\$4.95 ea RSP \$10

LOVE YOU TRINKET TRAY | TRT25

140mm x 20mm x 85mm. 3 assorted. Ceramic. Plain Box.



\$5.25 ea RSP \$10

LOVE YOU TRINKET BOX | TRB25

70mm x 75mm. 3 assorted. Ceramic. Plain Box.



\$3.75 ea RSP \$5

\$45.00 per pack of 12

SNOW GLOBE | SNG25

45mm x 65mm. 3 assorted. Display Box.



\$3.95 ea RSP \$5

HEART PLANTER | HTP25

Average size: 80mm x 125mm. 3 assorted. Hand painted for a unique finish. Plain Box.

CANDLES



\$1.65 ea Pair with the Dreamy Candle Tin & sell for **\$10**

SCENTED SACHET | SSS24

110mm x 5mm x 170mm. 20g. 3 assorted. Individually fragranced. Hang in a wardrobe or place inside drawers for a fresh scent. Cello Bag.



\$4.95 ea RSP **\$10**

REED DIFFUSER | REE24

Pack size: 50mm x 50mm x 180mm. 50ml. 3 assorted. Individually fragranced. Gift Box.



\$4.75 ea RSP **\$5**

DREAMY CANDLE TIN | DRM24

80mm x 55mm. 120g. 3 assorted. Individually fragranced. Gift Box.



\$2.95 ea RSP **\$5**

JOY TIN CANDLE | TIN24

80mm x 50mm. 140g. 3 assorted. Individually fragranced. Bubble Bag.



\$4.25 ea RSP **\$5**

\$25.50 per pack of 6

ENLIGHTEN CANDLE | ECD24

60mm x 72mm. 100g. 3 assorted. Individually fragranced. Gift Box.



\$3.85 ea RSP \$5

LOVING YOU CANDLE | LYC25

62mm x 75mm. 100g. 3 assorted. Fragrance: Pear Blossom and Freesia. Gift Box.



\$4.75 ea RSP \$10

SERENITY REED DIFFUSER | SRD25

Pack size: 55mm x 55mm x 160mm. 50ml. 3 assorted. Fragrance: Pear Blossom and Freesia. Gift Box.



PLEASE SEE WEBSITE FOR MORE FRAGRANCE DETAILS

\$4.85 ea RSP \$5

BOTANICAL CANDLE JAR | CAN24

60mm x 110mm. 90g. 3 assorted. Individually fragranced. Gift Box.



\$2.95 ea RSP \$5

GOLD TIN CANDLE | TIN25

80mm x 50mm. 120g. 3 assorted. Fragrance: Wild Fig. Bubble Bag.



\$3.95 ea RSP \$5

CANDLE POT | CPT24

71mm x 77mm. 90g. 3 assorted. Individually fragranced. Plain Box.



\$3.85 ea RSP \$5

HAPPINESS CANDLE | HAP25

60mm x 75mm. 100g. 3 assorted. Fragrance: Spring Blossom. Gift Box.

BODY CARE



\$2.95 ea Pair with the Single Nail File & sell for \$5

PETITE HAND CREAM | PHC24

38mm x 24mm x 107mm. 30ml. 2 assorted. Fragrance: Tea Rose or Vanilla Peach. Cello Bag.



\$3.75 ea RSP \$5

WITH LOVE BATH FIZZER SET OF 3 | LOT24

Pack size: 120mm x 25mm x 160mm. 3 x 40g. 2 assorted. Fragrance: Tea Rose or Vanilla Peach. Gift Box.

"I just wanted to say thank you so much for your help organising our gifts for our stall. Everything was such a hit :)"

Micaela,
Narraweena Public School



\$4.75 ea RSP \$10

\$28.50 per pack of 6

DUO SHOWER GEL PACK | GEL24

Pack size: 120mm x 46mm x 150mm. Includes 2 x 110ml shower gel. Fragrance: Tea Rose and Vanilla Peach. Gift Box.



\$4.85 ea RSP \$5

\$29.10 per pack of 6

LIP CARE SET | LPS24

Pack size: 50mm x 27mm x 130mm. Includes 10g lip balm and 10g lip scrub. 2 assorted. Fragrance: Tea Rose or Vanilla Peach. Gift Box.



\$4.85 ea RSP \$10

\$29.10 per pack of 6

HAND CREAM SET | HCM24

Pack size: 100mm x 30mm x 165mm. Includes 2 x 30ml hand creams. Fragrance: Tea Rose and Vanilla Peach. Gift Box.



\$1.95 ea Pair with the Donut Bath Fizzer & sell for \$5

BODY SCRUB POUCH | BSP24

75mm x 15mm x 110mm. 30ml. 3 assorted. Fragrance: Citrus Escape, Playful Posy or Spring Meadows. Cello Bag.



\$1.25 ea

Pair with the Petite Hand Cream & sell for \$5

SINGLE NAIL FILE | SIN24

55mm x 5mm x 180mm. 2 assorted. Cello Bag.



\$4.95 ea RSP \$10

\$29.70 per pack of 6

BODY SCRUB & BODY BUTTER SET | BBP24

Pack size: 50mm x 50mm x 150mm. Includes 60ml body scrub and 60ml body butter. 2 assorted. Fragrance: Tea Rose or Vanilla Peach. Gift Box.



\$5.65 ea RSP \$10

\$33.90 per pack of 6

BODY CARE SET | BDY24

Pack size: 135mm x 45mm x 140mm. Includes 100ml shower gel, 100ml body lotion and mesh sponge. 2 assorted. Fragrance: Tea Rose or Vanilla Peach. Gift Box.



\$3.95 ea RSP \$5

\$23.70 per pack of 6

HAND SOAP | HSP24

96mm x 42mm x 130mm. 200ml. 2 assorted. Fragrance: Tea Rose or Vanilla Peach. Shrink Wrapped.



\$3.75 ea RSP \$5

\$22.50 per pack of 6

BODY BUTTER | BUT24

Pack size: 85mm x 30mm x 98mm. 50ml. 2 assorted. Fragrance: Tea Rose or Vanilla Peach. Gift Box.



\$3.95 ea RSP \$5

\$23.70 per pack of 6

HAND & NAIL GIFT SET | HAN24

Pack size: 85mm x 35mm x 130mm. Includes 30ml hand cream and nail file. 2 assorted. Fragrance: Tea Rose or Vanilla Peach. Gift Box.

BATH FIZZERS & PAMPER



\$3.85 ea RSP \$5

\$23.10 per pack of 6

HEART BATH FIZZERS SET OF 6 | HET24
Pack size: 80mm x 55mm x 130mm. 6 x 10g. Fragrance: Spring Meadows. Gift Box.



\$2.85 ea RSP \$5

RAINBOW BATH FIZZER | RBF24

Pack size: 105mm x 22mm x 68mm. 110g. Fragrance: Spring Meadows. Gift Box.



\$3.85 ea RSP \$5

\$23.10 per pack of 6

GEL EYE PADS | EPD25

Pack size: 78mm x 23mm x 100mm. Equipped with two eye pads to help reduce puffy eyes. Gift Box.



\$3.25 ea RSP \$5

MACARON BATH FIZZERS SET OF 2 | MAC24

Pack size: 70mm x 45mm x 45mm. 2 x 50g. 2 assorted. Fragrance: Playful Posy and Spring Meadows. Gift Box.



\$3.95 ea RSP \$5

\$23.70 per pack of 6

LOVE FOR MUM HAND & NAIL GIFT SET | HAN25

Pack size: 54mm x 50mm x 140mm. Includes 30ml hand cream and nail file. 2 assorted. Fragrance: Tea Rose or Peach Blossom. Gift Box.



\$2.45 ea Pair with the Scented Sachet & sell for \$5

\$14.70 per pack of 6

DONUT BATH FIZZER | DBF24

Pack size: 80mm x 26mm x 70mm. 60g. 3 assorted. Fragrance: Playful Posy. Gift Box.



\$2.95 ea RSP \$5

TUTTI FRUTTI BATH BOMBS SET OF 2 | TUF24

Pack size: 90mm x 45mm x 48mm. 2 x 50g. 2 assorted. Fragrance: Playful Posy and Spring Meadows. Gift Box.

EACH PETAL
CAN BE
REMOVED TO
USE AS SOAP



\$2.55 ea RSP \$5

SINGLE STEMMED SOAP ROSE | ROS25

Pack size: 50mm x 255mm. 39g. 2 assorted. Fragrance: Rose. Gift Box.



\$2.25 ea Pair with the Eco Cleansing Pad & sell for \$5

\$54.00 per pack of 24

SWEETIE LIP GLOSS | LIP25

23mm x 80mm. 9.5ml. 2 assorted. Fragrance: Strawberry or Grape. Carded Blister Pack.



\$2.95 ea RSP \$5

SHIMMER DAISY BATH FIZZERS SET OF 2 | DSY25

Pack size: 135mm x 17mm x 73mm. 2 x 45g. Fragrance: Summer Blossom. Gift Box.



\$2.95 ea RSP \$5

BUTTERFLY BATH FIZZERS SET OF 2 | FLY25

Pack size: 130mm x 25mm x 53mm. 2 x 45g. Fragrance: Summer Blossom. Gift Box.



\$2.95 ea RSP \$5

CUPCAKE BATH FIZZERS SET OF 2 | CAK25

Pack size: 92mm x 45mm x 45mm. 2 x 45g. 2 assorted. Fragrance: Playful Posity and Spring Meadows. Gift Box.



\$1.85 ea Pair with the Eco Cleansing Pad & sell for \$5

\$44.40 per pack of 24

STRAWBERRY LIP BALM | SLB25

40mm x 45mm. 13g. 2 assorted. Fragrance: Strawberry. Carded Blister Pack.

PERSONAL CARE



\$4.50 ea RSP \$5

HEAD BAND | BND25

One size fits most. Pack size: 192mm x 65mm x 70mm. Gift Box.



\$2.95 ea Pair with Medium Cosmetic Bag & sell for \$10

COMPACT MIRROR | MIR25

72mm x 10mm x 70mm. 3 assorted. Cello Bag.



\$4.95 ea RSP \$10

LARGE COSMETIC BAG | COS24

245mm x 70mm x 140mm. 3 assorted. Cello Bag.



\$3.95 ea RSP \$5

SPORTY SOCKS | SPS24

To fit size 3-8. 3 assorted. Premium quality socks with comfort soles. Cello Bag.



\$6.45 ea RSP \$10

COSY SOCKS | SOK25

One size fits most. 3 assorted. Premium quality socks with grip soles. Cello Bag.



\$3.75 ea RSP \$5
GROOMING SET | GRS25

70mm x 20mm x 98mm. 3 assorted. Includes quality stainless steel nail clippers, nail file, slanted tweezers and scissors. Cello Bag.



\$4.35 ea RSP \$5
MEDIUM COSMETIC BAG | COS25

170mm x 85mm x 100mm. 3 assorted. Cello Bag.



\$4.25 ea RSP \$5
LUXURIOUS EYE MASK | EYE24
 One size fits most. Cello Bag.



RE-USABLE & WASHABLE FOR CLEANSING & MAKEUP REMOVAL

\$1.95 ea
 Pair with the Head Band & sell for \$10
ECO CLEANSING PAD | ECP25
 110mm x 15mm x 95mm. Cello Bag.



\$5.65 ea RSP \$10
COSMETIC BRUSH SET | BRS25
 Pack size: 42mm x 126mm. Gift Box.



Accessories not included.

\$4.65 ea RSP \$10
JEWELLERY BOX | JWB25
 100mm x 52mm x 100mm. 3 assorted. Cello Bag.



\$5.75 ea RSP \$10
HAIR TOWEL | TOW25
 One size fits most. Pack size: 100mm x 60mm x 160mm. 2 assorted. Gift Box.

KEYRINGS, BAGS & ACCESSORIES



\$1.95 ea

MAGNET SET OF 3 | MAS25

Pair with the Mum's Flower Keyring & Mobile Phone Pop & sell for **\$10**
35mm. Carded Blister Pack.



\$1.00 ea Pair with the Pom Pom Keyring & sell for **\$5**

\$12.00 per pack of 12

HANGING CAR AIR FRESHENER | HCF25

Average size: 65mm x 2mm x 160mm. 3 assorted. Fragrance: Fresh Linen. Cello Bag.



\$2.95 ea RSP \$5

FOLDABLE SHOPPING BAG | FOL25

Bag size: 370mm x 520mm. Pouch size: 75mm x 30mm x 170mm. 4 assorted. Each bag comes complete with a button up pouch. Cello Bag.



\$1.95 ea

BLOSSOM CAR AIR FRESHENER | AIR25

Pair with the Heart Keyring & sell for **\$5**

25mm x 45mm. 4 assorted. Fragrance: Peach Blossom. Fits on most car air vents. 1 flower air freshener and 2 refills per pack. Cello Bag.



\$2.00 ea Pair with the Blossom Car Air Freshener & sell for **\$5**

MUM'S HEART KEYRING | RNG24

37mm x 3mm x 85mm. 3 assorted. Cello Bag.



\$5.85 ea RSP \$10

COTTON TOTE BAG | CTB24

340mm x 710mm. 3 assorted.



\$2.65 ea Pair with the Hanging Car Air Freshener & sell for **\$5**

POM POM KEYRING | POM25

Average size: 30mm x 14mm x 120mm. 4 assorted. Cello Bag.



\$1.00 ea Sell 3 for **\$5**

FUN MAGNET | FUN25

53mm x 60mm. 3 assorted. Cello Bag.

"Do not hesitate to place an order with Smart Gift Ideas. Their brilliant customer service, talented designers and high quality products will have you ordering from them year after year!!!"

Elly,
Emu Park State School

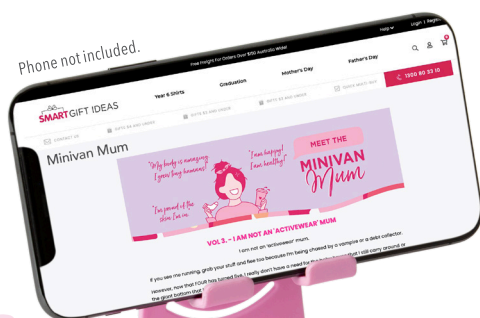


\$2.00 ea

Pair with the Mobile Phone Pop & sell for **\$5**

MUM'S FLOWER KEYRING | RNG25

35mm x 5mm x 90mm. 3 assorted. Cello Bag.



\$2.50 ea RSP **\$5**

MOBILE PHONE & TABLET STAND | MTA25

Compressed size: 75mm x 15mm x 125mm. Popped size: 75mm x 105mm x 125mm. Perfect for standing a mobile phone or tablet hands-free! Gift Box.



\$1.95 ea Pair with the Mum's Flower Keyring & sell for **\$5**

MOBILE PHONE POP | POP25

Compressed size: 40mm x 8mm. Popped size: 40mm x 25mm. 3 assorted. Cello Bag.



\$3.95 ea RSP \$5

CHERISH BRACELET | CHB24

Chain length: 170mm with 50mm extension. Average feature charm size: 13mm. 4 assorted. Cello Bag.



\$4.65 ea RSP \$10

CHERISH NECKLACE | CHN24

Chain length: 420mm with 50mm extension. Average feature charm size: 25mm. 4 assorted. Cello Bag.



\$3.75 ea RSP \$5

HEART EARRINGS | HTE25

Drop length: 30mm. Feature charm size: 17mm. 6 assorted. Cello Bag.



\$3.75 ea RSP \$5

NATURE EARRINGS | NAE24

Drop length: 30mm. Feature charm size: 17mm. 6 assorted. Cello Bag.



\$4.95 ea RSP \$10

NATURE NECKLACE | NAN24

Chain length: 800mm with 50mm extension. Feature charm size: 30mm. 6 assorted. Cello Bag.





\$3.25 ea RSP \$5

GIGI BRACELET | GGB25

Chain length: 165mm with 70mm extension. Average charm size: 10mm. 4 assorted. Cello Bag.

\$3.50 ea RSP \$5

GIGI EARRINGS SET OF 3 | GGE25

Pack size: 50mm x 60mm. 4 assorted. Cello Bag.



\$3.50 ea RSP \$5

ONE LOVED MAMA NECKLACE | ONE25

Chain length: 190mm with 65mm extension. Average feature charm size: 15mm. 4 assorted. Cello Bag.



\$2.95 ea RSP \$5

LULU BEADED BRACELET | LBB25

Chain length: 180mm with 80mm extension. 6 assorted. Pouch.



\$3.95 ea RSP \$10

MADE WITH LOVE POT HOLDER & OVEN MITT SET | POS24
Pot holder: 170mm x 170mm. 100% Cotton. Cello Bag.



\$4.95 ea RSP \$10

MADE WITH LOVE APRON | APN24
610mm x 760mm. Cotton Rayon. Cello Bag.



\$4.65 ea RSP \$5

FLITTER FLUTTER SERVING PLATTER | SER24
280mm x 20mm x 160mm. Melamine. 2 assorted.



SET OF 4
MATCHING
DESIGNS
PER PACK

\$2.50 ea RSP \$5

PLACEMAT SET OF 4 | MAT23
140mm x 285mm. 2 assorted. Cello Bag.

Accessories not included.



\$5.65 ea RSP \$10

CHEESE BOARD | CBO24
150mm x 365mm x 5mm. 2 assorted. Melamine. Bubble Bag.



\$3.45 ea RSP \$5

HEART MEASURING CUPS | HMC25
Pack size: 150mm x 100mm x 55mm. Gift Box.



\$2.55 ea Pair with Heart Measuring Cups & sell for \$10

HEART MEASURING SPOONS | HMS25
Pack size: 145mm x 50mm x 40mm. Gift Box.



\$3.85 ea RSP \$5

SILICONE SPATULA | SPA25
65mm x 12mm x 265mm. 2 assorted. Cello Bag.



"Thanks again for all your help and making the process smooth and simple. We are hopeful of another successful stall at our school and thank you and the Smart Gift Ideas team in helping make that happen!"

Drew,
Muswellbrook Public School



\$4.65 ea RSP \$5

SPRING BLOOMS SERVING PLATTER | SER25
280mm x 20mm x 160mm. Melamine. 2 assorted. Bubble Bag.



\$4.95 ea RSP \$10

BAMBOO CHOPPING BOARD | BCB25
160mm x 12mm x 345mm. 2 assorted. Bubble Bag.

GRANDMOTHER



\$3.95 ea RSP \$10

GRANDMOTHER CERAMIC PHOTO FRAME | GFM25
180mm x 10mm x 140mm. Photo size: 112mm x 72mm. Includes a non-breakable photo insert. Plain Box.

"We've experienced the best customer service and it's so refreshing to see that you care about what you do... all the way down to the lovely handwritten notes."

Regi & Rach,
Coomera Anglican College



\$1.85 ea

Pair with the Gorgeous Grandmother Notepad & sell for \$5

GORGEOUS GRANDMOTHER PEN | GMP24
131mm x 12mm x 15mm. Black ink. Gift Box.



\$2.25 ea

Pair with the Gorgeous Grandmother Pen & sell for \$5

GORGEOUS GRANDMOTHER NOTEPAD | GNP24
125mm x 7mm x 75mm. 60 pages. Cello Bag.



\$1.95 ea

Pair with the Grandmother Car Air Freshener & Love you Grandmother Pen & sell for \$5

GRANDMOTHER 2 IN 1 MAGNETIC PHOTO FRAME | GPF25
120mm x 100mm. Photo size: 85mm x 85mm. Pop out the magnet from the middle to insert a photo inside! Cello Bag.



\$3.95 ea RSP \$5

\$23.70 per pack of 6

GRANDMOTHER HAND & NAIL GIFT SET | GCM24
Pack size: 54mm x 50mm x 145mm. Includes 30ml hand cream and nail file. Fragrance: Tea Rose. Gift Box.



\$2.95 ea RSP \$5

GRANDMOTHER HANGING CHARM | GHM24
75mm x 5mm x 210mm. Ceramic. Cello Bag.



\$1.00 ea
\$12.00 per pack of 12

Pair with the Gorgeous Grandmother Notepad & Gorgeous Grandmother Pen & sell for \$10

GRANDMOTHER TASSEL BOOKMARK | GTB24
60mm x 165mm. Cello Bag.



\$3.75 ea RSP \$10

GRANDMOTHER MUG | GHM25

130mm x 85mm x 90mm. 350ml. New Bone China. Gift Box.



\$4.65 ea RSP \$10

GRANDMOTHER ECO TRAVEL MUG | GEM25

90mm x 135mm. 350ml. Silicone band. Gift Box.



\$1.00 ea

\$12.00 per pack of 12

Pair with the Grandmother Keyring & sell for **\$5**

GRANDMOTHER CAR AIR FRESHENER | GCF25

70mm x 2mm x 160mm. Fragrance: Citrus. Cello Bag.



\$1.00 ea

Pair with the Grandmother Large Notepad & Grandmother Magnet Set of 3 & sell for **\$10**

LOVE YOU GRANDMOTHER PEN | LGM25

145mm x 12mm x 15mm. Black ink. Gift Box.



\$1.95 ea

Pair with the Grandmother Large Notepad & Love you Grandmother Pen & sell for **\$10**

GRANDMOTHER MAGNET SET OF 3 | GMS25

35mm. Carded Blister Pack.



\$2.95 ea RSP \$5

GRANDMOTHER LARGE NOTEPAD | GNP25

148mm x 8mm x 210mm. 52 pages. Cello Bag.



\$2.00 ea

Pair with the Grandmother Car Air Freshener & sell for **\$5**

GRANDMOTHER KEYRING | GMK25

37mm x 3mm x 85mm. Cello Bag.

HOW TO ORDER FROM SMART GIFT IDEAS

- Place your order using any of the methods below:
 - Online: smartgiftideas.com.au • Phone: 1300 80 33 10
 - Email the attached order form: info@smartgiftideas.com.au
- At all times prior to sending your order please check our website for live stock availability.
- On receipt of order a confirmation and invoice copy will be emailed to you so please check thoroughly.
- Please ensure you receive this email confirmation to confirm your order is being processed.
- Please add info@smartgiftideas.com.au to your email safe list to ensure you receive your confirmation email.
- Your order will be despatched within 72 hours of receipt (unless during school holidays and we will hold your order until after the holidays, unless notified).
- If eligible, payment terms are up to 21 days from invoice date. When ordering online please tick 'Invoice Account' to receive these terms.
- Payment can be made via Credit Card, EFT or cheque.
- And lastly, enjoy your beautiful gifts and Happy Mother's Day!

ORGANISATION NAME ABN PO NO

DELIVERY ADDRESS

STATE POSTCODE

PHONE NUMBER ()

NAME OF CONTACT PERSON PHONE NO. CONTACT PERSON ()

EMAIL ADDRESS OF CONTACT PERSON

| CODE | PRODUCT DESCRIPTION | PRICE (INC GST) | QTY | TOTAL (INC GST) |
|--|--|-----------------|-----|-----------------|
| MUGS & GLASSWARE PAGES 12-13 | | | | |
| HUG25 | HUG MUG | \$2.95 | | |
| LOV24 | LOVE MUG | \$3.75 | | |
| CHE25 | CHERISH MUG | \$3.95 | | |
| MGS25 | CHEERS FOR MUM GLASS | \$5.85 | | |
| GLS25 | LET'S CELEBRATE GLASS | \$5.95 | | |
| MMC24 | MUG & COASTER SET | \$5.95 | | |
| SNU24 | SNUGGLE MUG | \$5.95 | | |
| CUP24 | CUP & SAUCER SET | \$7.95 | | |
| TUM25 | DOUBLE WALLED TRAVEL TUMBLER - PACK OF 6 \$4.95 EA | \$29.70 | | |
| TRAVEL MUGS & ON THE GO PAGES 14-15 | | | | |
| SHM25 | SHAKER MAKER | \$2.95 | | |
| SWB25 | SUPER MAMA WATER BOTTLE | \$2.95 | | |
| ETM25 | MUM'S ECO THERMAL TRAVEL MUG | \$4.65 | | |
| SAM25 | SO FRESH SALAD MATE | \$4.65 | | |
| ECO24 | VOGUE ECO THERMAL TRAVEL MUG | \$4.65 | | |
| SNA25 | SNACK ON THE GO | \$4.95 | | |
| SSM24 | STAINLESS STEEL THERMAL TRAVEL MUG | \$4.95 | | |
| GOG25 | GO GO THERMAL TRAVEL MUG | \$5.25 | | |
| BTL24 | HYDRATE WATER BOTTLE | \$5.25 | | |
| GBL24 | GLITZ WATER BOTTLE | \$5.95 | | |
| LUN25 | LUNCH TOTE | \$6.95 | | |
| STATIONERY PAGES 16-17 | | | | |
| PEN25 | SUPER MAMA PEN | \$1.00 | | |
| SNS25 | SWEET STICKY NOTEPAD | \$1.25 | | |
| HPN25 | HEART PEN | \$1.75 | | |
| PEN24 | MUM MOMENTS PEN | \$1.85 | | |
| PAS24 | FOREVER GORGEOUS METAL PEN | \$2.25 | | |
| PAD24 | SPECIAL MOMENTS NOTEPAD | \$2.25 | | |
| MOU25 | MOUSE MAT PHOTO FRAME | \$2.45 | | |
| MLP25 | MAGNETIC LIST PAD | \$2.65 | | |
| SNB25 | A6 NOTEBOOKS SET OF 2 | \$3.25 | | |
| A5N25 | A5 NOTEBOOK | \$3.85 | | |
| OGR24 | MEAL ORGANISER | \$4.35 | | |
| WEE24 | WEEKLY PLANNER | \$4.45 | | |

| CODE | PRODUCT DESCRIPTION | PRICE (INC GST) | QTY | TOTAL (INC GST) |
|---|---|-----------------|-----|-----------------|
| PHOTO FRAMES & GIFT ESSENTIALS PAGES 18-19 | | | | |
| MAG25 | 2 IN 1 MAGNETIC PHOTO FRAME | \$1.95 | | |
| MUM24 | MUM YOU ARE AMAZING PHOTO FRAME | \$2.95 | | |
| MUM25 | MUM YOU ARE BEAUTIFUL PHOTO FRAME | \$2.95 | | |
| FPF25 | FAMILY PHOTO FRAME | \$3.95 | | |
| CER25 | YOU ARE LOVED CERAMIC PHOTO FRAME | \$3.95 | | |
| SNW25 | SNOW GLOBE PHOTO FRAME | \$3.95 | | |
| HAR25 | HARMONY CARD - PACK OF 12 \$0.40 EA | \$4.80 | | |
| CRD25 | GIFT CARD WITH ENVELOPE - PACK OF 12 \$0.55 EA | \$6.60 | | |
| CRD24 | POP UP GIFT CARD WITH ENVELOPE - PACK OF 12 \$0.60 EA | \$7.20 | | |
| BAG25 | MEDIUM GIFT BAG - PACK OF 12 \$1.00 EA | \$12.00 | | |
| TAS25 | MUM TASSEL BOOKMARK - PACK OF 12 \$1.00 EA | \$12.00 | | |
| LGB24 | LARGE GIFT BAG WITH GIFT TAG - PACK OF 12 \$1.40 EA | \$16.80 | | |
| HOME & GARDEN PAGES 20-21 | | | | |
| CHM24 | SWEET HANGING CHARM | \$2.95 | | |
| HTT25 | HEART TRINKET TRAY | \$3.45 | | |
| HTP25 | HEART PLANTER | \$3.95 | | |
| SDP25 | SEED POT | \$3.95 | | |
| TRT25 | LOVE YOU TRINKET TRAY | \$4.95 | | |
| PLT25 | PLANTER PET | \$4.95 | | |
| PLA25 | PLANTER SPRAY WATER BOTTLE | \$4.95 | | |
| TRB25 | LOVE YOU TRINKET BOX | \$5.25 | | |
| VAS24 | PRETTY POSY VASE | \$5.95 | | |
| HGP25 | HANGING PLANTER | \$8.95 | | |
| SNG25 | SNOW GLOBE - PACK OF 12 \$3.75 EA | \$45.00 | | |
| CANDLES PAGES 22-23 | | | | |
| SSS24 | SCENTED SACHET | \$1.65 | | |
| TIN25 | GOLD TIN CANDLE | \$2.95 | | |
| TIN24 | JOY TIN CANDLE | \$2.95 | | |
| HAP25 | HAPPINESS CANDLE | \$3.85 | | |
| LYC25 | LOVING YOU CANDLE | \$3.85 | | |
| CPT24 | CANDLE POT | \$3.95 | | |
| DRM24 | DREAMY CANDLE TIN | \$4.75 | | |
| SRD25 | SERENITY REED DIFFUSER | \$4.75 | | |
| CAN24 | BOTANICAL CANDLE JAR | \$4.85 | | |

ORGANISATION NAME

PHONE NUMBER ()

| CODE | PRODUCT DESCRIPTION | PRICE (INC GST) | QTY | TOTAL (INC GST) |
|---|---|--------------------|-----|--------------------|
| REE24 | REED DIFFUSER | \$4.95 | | |
| ECD24 | ENLIGHTEN CANDLE - PACK OF 6 \$4.25 EA | \$25.50 | | |
| BODY CARE PAGES 24-25 | | | | |
| SIN24 | SINGLE NAIL FILE | \$1.25 | | |
| BSP24 | BODY SCRUB POUCH | \$1.95 | | |
| PHC24 | PETITE HAND CREAM | \$2.95 | | |
| LOT24 | WITH LOVE BATH FIZZER SET OF 3 | \$3.75 | | |
| BUT24 | BODY BUTTER - PACK OF 6 \$3.75 EA | \$22.50 | | |
| HAN24 | HAND & NAIL GIFT SET - PACK OF 6 \$3.95 EA | \$23.70 | | |
| HSP24 | HAND SOAP - PACK OF 6 \$3.95 EA | \$23.70 | | |
| GEL24 | DUO SHOWER GEL PACK - PACK OF 6 \$4.75 EA | \$28.50 | | |
| HCM24 | HAND CREAM SET - PACK OF 6 \$4.85 EA | \$29.10 | | |
| LPS24 | LIP CARE SET - PACK OF 6 \$4.85 EA | \$29.10 | | |
| BBP24 | BODY SCRUB & BODY BUTTER SET - PACK OF 6 \$4.95 EA | \$29.70 | | |
| BDY24 | BODY CARE SET - PACK OF 6 \$5.65 EA | \$33.90 | | |
| BATH FIZZERS & PAMPER PAGES 26-27 | | | | |
| ROS25 | SINGLE STEMMED SOAP ROSE | \$2.55 | | |
| RBF24 | RAINBOW BATH FIZZER | \$2.85 | | |
| FLY25 | BUTTERFLY BATH FIZZERS SET OF 2 | \$2.95 | | |
| CAK25 | CUPCAKE BATH FIZZERS SET OF 2 | \$2.95 | | |
| DSY25 | SHIMMER DAISY BATH FIZZERS SET OF 2 | \$2.95 | | |
| TUF24 | TUTTI FRUTTI BATH BOMBS SET OF 2 | \$2.95 | | |
| MAC24 | MACARON BATH FIZZERS SET OF 2 | \$3.25 | | |
| DBF24 | DONUT BATH FIZZER - PACK OF 6 \$2.45 EA | \$14.70 | | |
| EPD25 | GEL EYE PADS - PACK OF 6 \$3.85 EA | \$23.10 | | |
| HET24 | HEART BATH FIZZERS SET OF 6 - PACK OF 6 \$3.85 EA | \$23.10 | | |
| HAN25 | LOVE FOR MUM HAND & NAIL GIFT SET - PACK OF 6 \$3.95 EA | \$23.70 | | |
| SLB25 | STRAWBERRY LIP BALM - PACK OF 24 \$1.85 EA | \$44.40 | | |
| LIP25 | SWEETIE LIP GLOSS - PACK OF 24 \$2.25 EA | \$54.00 | | |
| PERSONAL CARE PAGES 28-29 | | | | |
| ECP25 | ECO CLEANSING PAD | \$1.95 | | |
| MIR25 | COMPACT MIRROR | \$2.95 | | |
| GRS25 | GROOMING SET | \$3.75 | | |
| SPS24 | SPORTY SOCKS | \$3.95 | | |
| EYE24 | LUXURIOUS EYE MASK | \$4.25 | | |
| COS25 | MEDIUM COSMETIC BAG | \$4.35 | | |
| BND25 | HEAD BAND | \$4.50 | | |
| JWB25 | JEWELLERY BOX | \$4.65 | | |
| COS24 | LARGE COSMETIC BAG | \$4.95 | | |
| BRS25 | COSMETIC BRUSH SET | \$5.65 | | |
| TOW25 | HAIR TOWEL | \$5.75 | | |
| SOK25 | COSY SOCKS | \$6.45 | | |
| KEYRINGS, BAGS & ACCESSORIES PAGES 30-31 | | | | |
| FUN25 | FUN MAGNET | \$1.00 | | |
| AIR25 | BLOSSOM CAR AIR FRESHENER | \$1.95 | | |
| MAS25 | MAGNET SET OF 3 | \$1.95 | | |
| POP25 | MOBILE PHONE POP | \$1.95 | | |
| RNG24 | MUM'S HEART KEYRING | \$2.00 | | |
| RNG25 | MUM'S FLOWER KEYRING | \$2.00 | | |

| CODE | PRODUCT DESCRIPTION | PRICE (INC GST) | QTY | TOTAL (INC GST) |
|---|--|--------------------|-----|--------------------|
| MTA25 | MOBILE PHONE & TABLET STAND | \$2.50 | | |
| POM25 | POM POM KEYRING | \$2.65 | | |
| FOL25 | FOLDABLE SHOPPING BAG | \$2.95 | | |
| CTB24 | COTTON TOTE BAG | \$5.85 | | |
| HCF25 | HANGING CAR AIR FRESHENER - PACK OF 12 \$1.00 EA | \$12.00 | | |
| JEWELLERY PAGES 32-33 | | | | |
| LBB25 | LULU BEADED BRACELET | \$2.95 | | |
| GGB25 | GIGI BRACELET | \$3.25 | | |
| GGE25 | GIGI EARRINGS SET OF 3 | \$3.50 | | |
| ONE25 | ONE LOVED MAMA NECKLACE | \$3.50 | | |
| HTE25 | HEART EARRINGS | \$3.75 | | |
| NAE24 | NATURE EARRINGS | \$3.75 | | |
| CHB24 | CHERISH BRACELET | \$3.95 | | |
| CHN24 | CHERISH NECKLACE | \$4.65 | | |
| NAN24 | NATURE NECKLACE | \$4.95 | | |
| KITCHEN PAGES 34-35 | | | | |
| MAT23 | PLACEMAT SET OF 4 | \$2.50 | | |
| HMS25 | HEART MEASURING SPOONS | \$2.55 | | |
| HMC25 | HEART MEASURING CUPS | \$3.45 | | |
| SPA25 | SILICONE SPATULA | \$3.85 | | |
| POS24 | MADE WITH LOVE POT HOLDER & OVEN MITT SET | \$3.95 | | |
| SER24 | FLITTER FLUTTER SERVING PLATTER | \$4.65 | | |
| SER25 | SPRING BLOOMS SERVING PLATTER | \$4.65 | | |
| BCB25 | BAMBOO CHOPPING BOARD | \$4.95 | | |
| APN24 | MADE WITH LOVE APRON | \$4.95 | | |
| CBO24 | CHEESE BOARD | \$5.65 | | |
| GRANDMOTHER PAGES 36-37 | | | | |
| LGM25 | LOVE YOU GRANDMOTHER PEN | \$1.00 | | |
| GMP24 | GORGEOUS GRANDMOTHER PEN | \$1.85 | | |
| GPF25 | GRANDMOTHER 2 IN 1 MAGNETIC PHOTO FRAME | \$1.95 | | |
| GMS25 | GRANDMOTHER MAGNET SET OF 3 | \$1.95 | | |
| GMK25 | GRANDMOTHER KEYRING | \$2.00 | | |
| GNP24 | GORGEOUS GRANDMOTHER NOTEPAD | \$2.25 | | |
| GHM24 | GRANDMOTHER HANGING CHARM | \$2.95 | | |
| GNP25 | GRANDMOTHER LARGE NOTEPAD | \$2.95 | | |
| GHM25 | GRANDMOTHER MUG | \$3.75 | | |
| GFM25 | GRANDMOTHER CERAMIC PHOTO FRAME | \$3.95 | | |
| GEM25 | GRANDMOTHER ECO TRAVEL MUG | \$4.65 | | |
| GCF25 | GRANDMOTHER CAR AIR FRESHENER - PACK OF 12 \$1.00 EA | \$12.00 | | |
| GTB24 | GRANDMOTHER TASSEL BOOKMARK - PACK OF 12 \$1.00 EA | \$12.00 | | |
| GCM24 | GRANDMOTHER HAND & NAIL GIFT SET - PACK OF 6 \$3.95 EA | \$23.70 | | |
| FREE FREIGHT FOR ALL ORDERS OVER \$150 OR \$10 FREIGHT FOR ORDERS UNDER \$149.95 AUSTRALIA WIDE! | | | | |
| | | | | TOTAL |



With Quick Multi-Buy,
bulk buying has never
been easier!

SCAN ME TO LEARN MORE

If we sell out of a gift, would you like a
replacement item to the same value?

YES

NO

(if 'NO' we will
contact you to advise)



THIS YEAR, WE'RE APPROACHING MOTHER'S DAY WITH A FRESH PERSPECTIVE THINK OF US AS THE EXTRA VOLUNTEERS YOU NEED!

WHAT TO EXPECT:

Gifts students love to give, and mums love to receive.



Pages 12 - 40

NEW: Expert tips on selecting and pricing your gifts, plus much more!



Pages 1 - 11

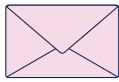
Over 100 gifts priced at \$4 or less.



View the collection online

PLUS

A new email series:
How to run your best Stall Day yet!



Subscribe to our newsletter and don't miss an update:



AND

A ton of free resources sent straight to your inbox!



Bonus \$1,000 Gift



For orders between \$1,000 and \$1,999.95

Bonus Early Bird Gift



For orders over \$100 placed by midnight 28th February 2025

Bonus \$2,000 Gift



For orders over \$2,000

PLUS ALL THE USUAL PERKS

- ✓ **FREE** shipping on orders over \$150
- ✓ **No minimum order** - accessible for schools big and small!
- ✓ **Designed by Australian mums, for mums**
- ✓ **Ordering made easy:** shop online, complete the order form, or use our Quick Multi-Buy feature!

REMEMBER!

We're here to help - **text**, **email**, or **call** us anytime!

For all Terms & Conditions please refer to our website, smartgiftideas.com.au