

2025 AHCA

NATIONAL SALE

NATIONAL
WESTERN[®]
Stock Show

JANUARY 25 • DENVER, CO



"A Highland Bull"
by Hilary Barker
Image courtesy of

Doricmor Fine Art Publishers, Edinburgh, Scotland

Welcome to the 36th Annual National Highland Sale!

We are thrilled to welcome you to the 36th Annual National Highland Sale. It is so exciting to be a part of this one-of-a-kind AHCA member produced sale! The enthusiasm and dedication of AHCA producers make this event truly special. Being part of a tradition that celebrates exceptional Highland cattle and supports the breed is indeed exhilarating.

Our sale catalog showcases a diverse array of trusted genetics from all over the U.S. and throughout the world. The National Highland Sale is the perfect showcase for these exceptional genetics. It's a hub where breeders and enthusiasts come together to appreciate and acquire top-tier cattle. The excitement around the sale is unmistakable and the quality offered is unparalleled. Every bid supports the legacy of excellence that AHCA members have cultivated with their breeding programs over the last 75 years!

For further information on any of the sale lots, please contact the sale consignors or the National Sale Committee. Sheridan Auction Company will be leading the event, bringing their stellar reputation for excellence and commitment to success in the cattle market.

If you are unable to attend in person but wish to place an absentee bid, please contact Bill Sheridan, Doug Sheridan or Jason Buher. You can also watch the sale and bid via CCI.live, who will manage the online broadcasting. Be sure to register and sign up prior to sale day to secure your online seat and process your buyer number. If you have trucking needs, please contact Jesse Silva at the number listed on the facing page. Buyers are responsible for making hauling arrangements. Following the purchase of cattle, remember it is the buyer's responsibility to care for them. If you are not present, please make appropriate arrangements with the seller immediately after the sale. Terms are cash, check, credit card (with a 4% fee) or Venmo (3% fee). AHCA Terms and Conditions apply.

For young breeders the AHCAj Futurity is a great incentive. Any AHCA junior purchasing a breeding heifer at this year's National Sale will have the opportunity to win \$1000 next year at the NWSS. For more information, please contact AHCA or visit our website at highlandcattleusa.org and click on the juniors tab. Juniors sign up for the Futurity at the clerking table after the sale.

It is the collective effort and dedication that makes the National Highland Sale such a standout event. The collaboration between the consignors, AHCA and all the hardworking individuals behind the scenes truly brings out the best in this prestigious sale. Here's to another year of exceptional cattle, successful bids, a thriving Highland cattle community and memorable moments! Thank you for your participation and support!

**See you soon,
Heather Bailey, Collin Demuth & Jan Larson**

DID YOU KNOW?
All animals that are either
Division or Reserve Division
Champions in the National
Show, are eligible to be
added to the sale after the
show.



Bill Sheridan	517.719.0768
Doug Sheridan	517.749.7976
Jason Buher	517.256.3427

NATIONAL HIGHLAND SALE

January 25, 2025 - Denver, CO
at the National Western Stock Show

Sale Day Phones:

Heather Bailey 970.666.1982
Collin Demuth 402.366.8238
Bill Sheridan 517.719.0768
Doug Sheridan 517.749.7976
Jason Buher 517.256.3427

Livestock Transportation:

Jesse Silva 970.396.0421 will be the transportation coordinator. Contact him to inquire about hauling options and this should be initiated prior to the sale, if at all possible. Buyers are responsible for arrangements and caring for their animals following the sale.

**Please visit with sale management and consignors for possible transportation options as well.*

Auction Terms:

Every effort has been made to assure the correctness of this catalog, but all announcements from the auction block shall take precedence over the printed material.

Every buyer must be properly registered and have a buyer's number to bid and participate in auction. Participation in auction expressly means that the buyer agrees to adhere to these terms and conditions of auction.

If any dispute arises between two or more bidders, the auctioneer may immediately put the lot up for sale again and resell to the highest bidder. The decision of the auctioneer shall be final and absolute.

Details on Genetic Lots:

Semen Rights

Consignor is responsible for choosing the collection facility and the buyer will be responsible for collection expenses. The sale of semen rights is a transaction between buyer and seller only. AHCA Rules and Regulations apply. A semen rights contract will be signed by consignor and buyer after the sale that defines and guarantees terms and conditions of collection.

Flush Rights

A minimum of six (6) grade #1 embryos are guaranteed to the buyer. In the event the chosen cow does not produce a minimum of six embryos, the buyer will have the option of flushing the cow again until the minimum and only the minimum of six embryos is achieved or the buyer may have the option of a prorated price per embryo based on purchase price at the National Sale. This settlement will be handled only through the buyer and seller. If the chosen cow produces more than six embryos, all embryos will be the property of the buyer. Consignor will choose the embryo technician and location for flushing; flush will happen within 6 months of sale date. The buyer will be responsible for expenses associated with the flush. The sale of flush rights is a transaction between buyer and seller only. AHCA Rules and Regulations apply. A flush rights contract will be signed by consignor and buyer after the sale that defines and guarantees terms and conditions of flush.

Semen

Semen is auctioned by the per unit price. You are bidding "times the money". All shipping is the responsibility and at the expense of the buyer. The number of straws and applicable details are listed with each particular lot. Gender sexed semen is not guaranteed, as there is still a percentage of error in applicable technology. AHCA Rules and Regulations apply. Buyer must take possession of semen within 60 days of sale date. Eligible for USA only unless otherwise noted.

Embryos

Embryos are auctioned by the per unit price. You are bidding "times the money". All shipping is the responsibility and at the expense of the buyer. The number of embryos and applicable details are listed with each particular lot. Gender sexed embryos are not guaranteed, as there is still a percentage of error in applicable technology. AHCA Rules and Regulations apply. Buyer must take possession of embryos within 60 days of sale date. Eligible for USA only unless otherwise noted.

**Schedule Details
Terms and Conditions
Updates
Scan Here >**



CONSIGNORS INDEX

Back to the Roots, Watkins, MN ph. 320.402.4422
Bairnsley Highland Cattle, Victoria, Australia ph. 011.61.409.196.110
Bauer Farms, Bucyrus, KS ph. 913.624.4853
Beyond Hope Farm, Ellendale, MN ph. 507.774.2048
Black Hills Highlands, Spearfish, SD ph. 605.584.9032
Climbing Stump Farm, Harris, MN ph. 651.208.3084
Collin Demuth, York, NE ph. 402.366.8238
Craigowmill Farm, Kinross, Scotland ph. 011.44.7899.877001
Emily Blodgett, Colfax, WI ph. 715.456.5670
Golden Hour Farm, Hyrum, UT ph. 385.280.8918
Heather Valley Cattle Co., Laramie, WY ph. 970.666.1982
Highland Cattle Foundation, Brighton, CO ph. 303.659.2399
Highland Connection, Lawrence, KS ph. 712.249.2009
Highland Genetics LLC, Princeton, MN ph. 833.444.4269
Highland Spice, Buffalo, WY ph. 307.620.5828
Howling Springs Farm, Elverson, PA ph. 610.487.4893
Husker Show Cattle, York, NE ph. 402.366.8238
Kerry N Cattle Co., Coggon, IA ph. 319.560.1344

KeSaBe Farm, Prosperity, PA ph. 724.809.0554
LEA-White Farms, Charlotte, MI ph. 517.543.7979
LiTerra, Grove City, PA ph. 814.786.7384
Lone Star Highlands, Whitesboro, TX ph. 940.727.8934
Mid-Lakes Highlands, Mindoro, WI ph. 315.406.1201
Rocky Flats Ranch LTD., Hygiene, CO ph. 303.532.1981
Schulte Farms, Pleasanton, NE ph. 308.440.0393
Seawind Meadows, LLC, Dennis, MA ph. 508.776.7150
Sheppard Farm on Apple Hill, Hanover, PA ph. 717.634.8101
Skye High Farms, Coldwater, MI ph. 517.403.9586
Spears Farms, Brentwood, CA ph. 925.963.3870
Spring Flight Farm LLC, Elmira, NY ph. 607.732.0448
TC Highlands Farm, Pleasureville, KY ph. 502.803.5823
Trinity Farms, LTD, Greeley, CO ph. 303.947.2545
T-Ross Cattle Company, Chippewa Falls, WI ph. 715.864.4101
Windemere Farm, Junction City, WI ph. 715.457.6748
Windland Flats, Princeton, MN ph. 763.260.1001

1

Beyond Hope Stevie (AI,D)

AHCA #69,424 • Female • Yellow • 6/12/24

Beyond Hope Farm, Ellendale, MN

OPEN HEIFER

EZ Acres Gifford (ET) 31,783

TRAFALGAR SAMPSON II (D) 42,753

Trafalgar Fanny 29,533

GOF Broadstone 13B -7205- (D) 24,822
EZ Acres Kristin 22,792

Trafalgar Benedict 24,228

Trafalgar Uluva 19,515

Sunset Limited Edition (AI,D) 42,794

Du Boise Panther - 13405- 46,042

Skye High Koal (D) 46,377

ALMOSTA FARM'S SERENA 54,467

Schon Boden's Selena (PV,D) 39,263

DH Express (D) 34,005

Schon Boden's Sabrina (D) 33,200

Stevie is moderately framed, deep bodied, feminine and structurally correct with a fantastic disposition. Her pedigree boasts many reputable breeders including Almosta, Trafalgar Square, Spring Flight and Schon Boden. The sixth calf out of Almosta Farm's Serena, a larger framed cow with excellent feet and legs, tons of capacity and a perfect udder. In her show days, Serena placed consistently at the top of her division, most notably being named Reserve Grand Champion Cow/Calf pair at the 2019 NWSS. Serena's pedigree shows excellent udder quality, longevity and calving ease. Can't go wrong with Stevie! Our loss, your gain!



2

Skye High Neon Scarlett (PV,D)

AHCA #69,436 • Female • Red • 5/25/24

Skye High Farms, Coldwater, MI

OPEN HEIFER

LEA Haaken (D) 51,761

SKYE HIGH CONVOY (D) 53,743

Skye High Xylene 49,519

LEA Forbes (D) 49,174

LEA Valkyrie 36,286

SPH Uerdude (D) 45,567

Lilian of Five Star Farm (AI) 35,828

DH Churchill (AI,D) 27,914

Klair of Five Star Farm 35,826

CH Aloysius (D) 39,178

SKYE HIGH VERMILLION (PV,D) 46,978

Gilchrist's Angela (D) 27,321

Jock of Glengorm 18,549

Gilchrist's Andrea II 22,541

Truly one of the best we raised this year by ultra proven, age 16, Skye High Vermillion (dam of Skye High Cornerstone and other champions) going back to imports Jock of Glengorm and Jock the 24th and 28th of Leys Castle. Sired by Skye High Convoy who was a large correct bull going back to Larson's Five Star Farm and LEA-White. Stylish and powerful right here in one proven package. Sky is the limit with this one. She'll be one to base a breeding program off of. Weaned fat on milk and pasture alone. Nt821 negative.



3

HC Nora (ET,PV,D)

AHCA #69,374 • Female • Black • 5/19/24

Highland Connection, Lawrence, KS

OPEN HEIFER

Samhach Buidhe of Bairnsley (AU,AI,D) 49,802

STR RUTHLESS GAME (AI,D) 53,128

Star Lake Victoria (D) 47,263

Rushmore Bracken UKGRC907582

Isobaile of Cruachan AU4167

GH Due Diligence (D) 42,337

Star Lake Maggie 43,211

Sunset Rebel Yell -13784- (D) 46,398

LEA Coffey 43,906

LEA Harrison-3 (D) 51,762

MP'S DORA (PV,D) 59,783

Bennachie's Kat (PV,D) 53,419

LEA Baylie (D) 49,173

Bennachie's Kayla (D) 49,081

HC Nora is a May born Ruthless Game daughter out of our up and coming donor, MP's Dora. Nora and her flush mate brother, HC New Horizon, are the only registered black offspring out of the renowned STR Ruthless Game who has over 70 progeny recorded. HC Nora exemplifies the qualities we strive to create with our breeding program. She combines eye appeal, structural integrity and performance in a well-balanced package. We feel her potential for success both in the show ring and as a breeding piece will make her an exciting addition to anyone's program!



4

SF Napa (AI,PV,D)

AHCA #69,435 • Female • Black • 5/2/24
Spears Farms, Brentwood, CA & Highland Spice, Buffalo, WY
OPEN HEIFER

Legend of Cathach Heritage 15C -16727- 58,385
HIGHLAND SPICE HICKORY (D) 59,533
CBS Rosanna 54,777

High Country's Quinn (D) 51,704
MP'S GALADRIEL (PV,D) 61,892
Bennachie's Sabrina (PV,D) 51,883

Uallach Dubh 6th of Pollok (D) UKNEP080335
M'Lady of Latheron Heritage CA12705

Sorcha's Santiago 1X (D) 49,541
KJH Roxann 40,515

Con-Mon Hank -15318-(D) 49,884
Yarrow 2nd of Dundonald 48,028

Bennachie's Laphroaig (D) 41,669
MBN Sylvia (D) 42,019

This May young lady is daughter to the National Champion HS Hickory. Her dam is a young cow we bought from the Mountain Primal dispersal. Stout, functionally made female that has the makings of a future donor. This heifer calf has not disappointed. Hair quality, calm personality and future potential to match the superiority of her parents, makes her an easy pick. A junior exhibitor and this sweet girl would get along well as they grow together. Her pedigree offers a lot of options for the more seasoned breeders. AND she's black! Her best days are to come. Nt821 negative by pedigree.



5

HS Nigella (D)

AHCA #69,209 • Female • Black • 4/29/24
Highland Spice, Buffalo, WY
OPEN HEIFER

Legend of Cathach Heritage 15C -16727- 58,385
HIGHLAND SPICE HICKORY (D) 59,533
CBS Rosanna 54,777

Beauregard of Willow Glen CA16418
JETTA OF WILLOW GLEN 63,913
Clementine of Willow Glen CA16602

Uallach Dubh 6th of Pollok (D) UKNEP080335
M'Lady of Latheron Heritage CA12705

Sorcha's Santiago 1X (D) 49,541
KJH Roxann 40,515

Raymond of High Land Ballaugh CA14232
Lauriston Robin CA13710

Pines Acres Apache CA16240
Zenzero of Tatayoko CA16052

Save yourself time and miles, Nigella has all the ingredients! She features popular Willow Glen genetics on her dam side, paired with Hickory's unique blend of Scottish, Western Canadian, Eastern Canadian and desirable US genetics. Nigella's dam has great feet and udder structure and is sure to have passed on to Nigella the excellent maternal qualities of her relatives. They are favorites in our herd. Nigella's sire, Hickory, was a National Champion who has already produced two Reserve National Champions but is prized by Highland Spice for his functionality and soundness. Sweet, winter hardy, nt821 negative by pedigree - you will love her!



6

Nellie of Black Hills Highlands (AI,D)

AHCA #69,432 • Female • Red • 4/28/24
Black Hills Highlands, Spearfish, SD
OPEN HEIFER

Orison of Culfoich (D) 49,237
AHR'S ORISON LACHLAN (AI,PV,D) 63,883
Shat Acres Cadence (PV,D) 56,404

CSF Roosevelt (D) 59,312
CSF CHASKA 63,293
CBS Cid 54,771

Exhibit 2nd of Auch UKTRA950078
Sobhrach Og 2nd of Culfoich UKJMC980494

Shat Acres Lance's Lucky 08 (D) 47,448
Shat Acres Caitlyn (D) 45,073

CSF Rutherford (AI,D) 56,761
Gray Owl's Brianna 52,286

Sorcha's Santiago 1X (D) 49,541
CBS Celesta12Y (D) 51,120

Fancy Nellie comes with a really cool pedigree. To start, on her sire's side you have UK imported genetics through Orison of Culfoich. He's a UK Who's Who with Achnacloich, Douneside, Auch and Benmore. Nellie's topside also includes historic eastern farms like Shat Acres, Who's Hill and Gordon's Fold. Nellie's dam, Chaska, is a first calf heifer and traces back to GOF out of Canada along with Ledyard, Cobblestone, Husker and several other stand outs. Chaska comes from a dam who produced 7 calves in 7 years starting at 3 years old. This pretty girl should be yours!



7

Trinity's Carmella

AHCA #69,278 • Female • Silver • 4/24/24

Trinity Farms, LTD, Greeley, CO

OPEN HEIFER

LEA Becket (D) 42,976

FINLEY FALLS DUNCAN (D) 54,601

LEA Faye (D) 48,224

Gray Owl's Borg (D) 53,568

HONEY CREEK CORINNA 57,148

Honey Creek Crystal 52,734

DH Montgomery (AI,D) 27,923

LEA In Vogue 36,296

Flatheads Glen Moray (D) 45,515

LEA Corrie 44,221

GH Mr Chips (D) 45,568

JAR Dandelion 43,432

Marsh Creek Royal Duke (D) 49,855

Honey Creek Polly 47,194

Carmella is a wonderful young heifer. Her exceptional disposition and true Scottish tradition composition make her a standout at Trinity Farms. She displays a balanced body with exceptional depth of rib. Refined and delicate in her front third boasting femininity. Her dam is a gorgeous blonde frosted female who has all the maternal traits a breeder could want. Carmella's sire adds tremendous value with the genetic influence of efficiency and functional cattle. Add a shimmer and shine to your herd with this super sweet heifer.



8

LEA Utter Nonsense (D)

AHCA #69,332 • Female • Silver • 4/20/24

LEA-White Farms, Charlotte, MI

OPEN HEIFER

Somerset Ken Brodie (D) 62,510

SOMERSET BRODIE AXEL (PV,D) 63,477

LEA Annie (D) 53,269

LEA Kennet (D) 54,560

Belva 6th of Dundonald (D) 52,367

Skye High X-Axis (D) 50,046

LEA Hadley 50,584

Raymond of High Land Ballaugh CA14232

Lauriston Robin CA13710

Narcisse Des Orcades CA12980

Lauriston Mona CA12819

Beauregard of Willow Glen CA16418

HALO OF WILLOW GLEN 61,235

Billie Piper of Who Heritage CA16482

This sweet, gorgeous heifer comes out of fancy Canadian bloodlines; her dam is a stunning young silver cow, Halo of Willow Glen. Her sire is Somerset Brodie Axel, a young, impressive silver bull boasting plenty of LEA-White, Skye High, Dundonald and Sunset in his pedigree. This is a remarkable offering combining imported genetics with some of the finest available in the US. Utter Nonsense promises to be much like her dam; moderate in frame, with excellent feet and udder, incredible breed character, combined in a stunning silver haircoat. This is your chance to grab her.



9

Windemere North Star (ET,PV,D)

AHCA #69,021 • Female • White • 4/17/24

Windemere Farm, Junction City, WI

OPEN HEIFER

PRG McGowan (D) 55,320

FLATHEADS WYOMING (PV,D) 61,046

Flatheads Ostag (D) 50,616

Skye High Yukon Sun (D) 50,998

Du Boise Arielle -16123- 55,158

Flying Highland's Haggus (D) 42,268

H.S. Vivian 28,653

Cadalach Lincoln O Strath-Brae CA12115

Naomi of Cherry Point CA13113

Raindancer of Five Star Farm (D) 40,675

Clachan Glas Xaomi CA15712

Urbane of Cherry Point CA15181

DAVINA OF HIGHLAND HERITAGE -16856- (D) 58,284

Ann of Avonlea Heritage 14A CA16379

Her color is eye-catching but you'll appreciate her even more when you study her structure! This heifer has size, width and depth that set her apart from her peers, hair that fitters dream about, and a temperament that will make her a farm favorite. Star's dam is a Canadian import with a moderate frame, great feet and legs and a beautiful udder. Her sire combines the style of two national champion bulls with the productivity of his Impact Dam; he's thick and deep with a strong topline. Star will be competitive in the show ring and/or pretty in your pasture. Nt821 negative.



10

W&L Naranja (ET,PV,D)

AHCA #69,419 • Female • Red • 4/11/24

Windland Flats, Princeton, MN

OPEN HEIFER

STR Ruthless Game (AI,D) 53,128

STR ENCORE (ET,PV,D) 62,210

STR Enchanted (ET,PV,D) 52,401

GH Mr Chips (D) 45,568

GRAY OWL'S BRITTA (D) 55,429

JAR Britni 43,433

Samhach Buidhe of Bairnsley (AU,AI,D) 49,802
Star Lake Victoria (D) 47,263

Karabin Farm's Tuffy (D) 42,152
Summit Ranch Shaelyn (AI,PV,D) 42,734

Trafalgar Nathan (D) 39,363
Glen Haven Andreana 39,990

Willmorrie's Cube Mtn. Artur 20,165
JAR Brianne 42,039

This one is ripe for the picking. Spitting image of her 2023 National Champion Daddy, STR Encore, she walks with grace and beauty. Structurally correct, you can see the formation of her wide hip structure and added bone from her powerhouse dam. Packed with docility and personality, she has been led by juniors and is eager to please. Built for the long haul, this bonita seniorita is one to build a genetic powerhouse around. Be one of the first to own an STR Encore progeny. Eligible for the Windland Flats' Show Incentive. Nt821 negative by pedigree. Learn more at windlandflats.com.



11

LEA Ultimatum (D)

AHCA #69,334 • Female • Silver • 4/9/24

LEA-White Farms, Charlotte, MI

OPEN HEIFER

Somerset Ken Brodie (D) 62,510

SOMERSET BRODIE AXEL (PV,D) 63,477

LEA Annie (D) 53,269

LEA Kennet (D) 54,560
Belva 6th of Dundonald (D) 52,367

Skye High X-Axis (D) 50,046
LEA Hadley 50,584

Raymond of High Land Ballaugh CA14232
Lauriston Robin CA13710

Beauregard of Willow Glen CA16418

HEQET OF WILLOW GLEN 61,237

Constance at Willow Glen CA16603

High Country's Saint Andrew (D) 48,402
Zodiac of Tatlayoko CA16056

This beautiful silver heifer is a gem in the making. Her dam is a young Canadian import, Heqet of Willow Glen, who provides some unique bloodlines, moderate frame and excellent udder and feet to an already outstanding offering. Ultimatum's sire is a tremendous silver bull Somerset Brodie Axel, who combines some of the best of LEA-White, Skye High, Dundonald and Sunset breeding to bring top quality and exquisite appearance to the mix. This silver heifer is quiet, good natured and oozes breed character, wrapped up in a magnificent and extremely popular color. Get her while you can.



12

LEA Uma (D)

AHCA #69,333 • Female • Red • 3/29/24

LEA-White Farms, Charlotte, MI

OPEN HEIFER

Argyll's Jaco (D) 52,712

SCHON BODEN'S LEGEND (D) 60,927

Schon Boden's Lydia (D) 51,534

HSC Rebel's Jack (D) 49,345
Cobblestones Jasmine (D) 46,763

Buckwheat of Gurholt (D) 40,625
Schon Boden's Claire 30,949

DH Montgomery (AI,D) 27,923
LEA Nancy Whiskey 37,862

LEA Edradour (D) 48,749

LEA HARLOW 50,591

QM Glennkerri 34,535

GOF Foundry 9F -9962- 29,216
Quiet Meadow Victoria 26,525

This promising red heifer is out of LEA Harlow, a big white Impact Dam, with excellent feet and udder, and with 10 calves under her belt. Uma's sire, Schon Boden's Legend, is a big brindle bull out of Wisconsin from top bloodlines with tremendous conformation, and some of the best feet ever seen on a young sire. Uma herself is a doll; a quiet heifer who was a dream to halter break and loves attention. If you are looking for a sweet disposition, longevity, capacity and structure with a proven lineage of reproductive excellence, this is your girl.



13

T-Ross Nelly (ET,PV,D)

AHCA #69,427 • Female • Red • 3/19/24

T-Ross Cattle Company, Chippewa Falls, WI

OPEN HEIFER

Landelley's DenJen (D) 37,901

LANDELLEY'S CODY (D) 41,127

Landelley's Harriett (D) 37,658

Jens of Five Star Farm (D) 34,548

Khmer Laas'n Brandy 29,388

Silva's Big Mac (D) 32,889

ELY Miss Adelaide 31,233

GOF Xerxes 2X (CA,D) 22,725

Trafalgar Olivia 16,108

Trafalgar Benedict 24,228

HI BENEDICT MADDY (ET,D) 28,201

Lorien's McErrol 23,221

Shat-Acres Fritz 20,026

Lorien's Irene 18,644

T-Ross Nelly has a bright future ahead. Her depth and structure are a couple of her strongest highlights. She is from a great mating and embryo flush where growth and performance were the objectives, the results have not disappointed. She is from the same embryo flush as T-Ross Summit Ranch Levene, who has had a fun and exciting show career. When on the move she carries herself well and stays strong. As she continues to mature, being solid from the ground up will keep her attractive and productive for years to come.



14

T-Ross Nora (ET,PV,D)

AHCA #69,425 • Female • Red • 3/8/24

T-Ross Cattle Company, Chippewa Falls, WI

OPEN HEIFER

GOF Marshall 16M CA3636

GOF RALPH 21R -4094- (CA,D) 18,498

GOF Melinda 1M CA3490

GOF Jake 3J CA3162

Deidre of Diben CA2563

Emerlen Kollin CA3232

Emerlen Goldie CA2711

GOF Xerxes 2X (CA,D) 22,725

Trafalgar Olivia 16,108

Trafalgar Benedict 24,228

HI BENEDICT MADDY (ET,D) 28,201

Lorien's McErrol 23,221

Shat-Acres Fritz 20,026

Lorien's Irene 18,644

T-Ross Nora, this girl is cool. She is a powerhouse from the ground up, on the move she carries herself correctly. Her rib shape, depth, and strong made top are a few highlights first noticed when looking at her. She is from the strong mating of GOF Ralph 21R and HI Benedict Maddy, two timeless greats in the Highland World. Holding all her correctness together in a strong muscle pattern, that as she grows and develops will keep her solid and able to withstand the test of time just like her parents. She has an exciting future!



15

BTTR Charlotte (ET,PV,D)

AHCA #68,742 • Female • Dun • 3/15/24

Back to the Roots, Watkins, MN

OPEN HEIFER

Trafalgar Nathan (D) 39,363

GH MCLINTOCK (D) 44,945

WF Silver Dust 39,727

E Z Acres Nathaniel 26,710

Trafalgar Fanny 29,533

DH MacIntosh 8H (D) 32,750

Dunvegan's Dusty Di 30,284

Gilchrist's Kodiak 25,603

DH Xanadu II 43,561

DH Dalton (AI,D) 48,035

HVF LADY MALLORY (D) 54,219

HVF Lady Hayley 47,088

HVF Sir Brewster (D) 36,104

Unique Acres Effie 31,063

Charlotte is a sweetheart, loves attention and is first to come up to you in the pasture. She has great lines and a smooth stride. She packs a punch though in stature and will be excellent breeding stock. In addition to her great demeanor and structure, she has an amazing pedigree. Charlotte is sired by GH McIntock, 2008 NWSS Reserve Champion Bull. Charlotte's dam, Lady Mallory, is one of our foundation cows. Mallory has produced amazing progeny and continues as a great broody cow even now into her teen years. Charlotte will surely make a tremendous addition to your farm.



16

Bauer Farms Cashmere

AHCA #67,715 • Female • Dun • 3/12/24

Bauer Farms, Bucyrus, KS

OPEN HEIFER

Finley Falls Beau (D) 53,899

LCF LAIRD FINLEY (D) 59,315

Lori's Snow Drop 54,154

We Tired Ace (D) 46,717

TLD SPRINKLES 58,265

TLD Daphne 54,793

LEA Becket (D) 42,976

OZ Bonnie Maisie 47,471

St. Pat of Skye High 41,017

JD Snowflake 47,759

LEA Broderick (D) 42,979

DH Katherine's Princess 22,138

Gray Owl's Ash-Tar (D) 50,006

Windemere Amber (AI,D) 51,441

Bauer Farms Cashmere is a stunning young heifer that has just begun her show career and carries a ton of potential in and out of the ring. She is structurally correct, feminine and level in her hip. She is extremely calm in her disposition and took to the halter like a champ. Her sire is a direct grandson to LEA Becket, who sired Finley Falls Duncan (10x Grand Champion Bull and 2x NWSS Grand Champion Bull). Her dam also carries impressive names in her genetics like the influential bull Black Watch Emmett and many time Grand Champion Bull Gilchrist's Jock.



17

KJN Cricks Calliope (AI,D)

AHCA #68,035 • Female • Red • 2/9/24

Kerry N Cattle Co., Coggon, IA

OPEN HEIFER

Karabin Farm's Tuffy (D) 42,152

SYMBIOSIS SIR TITAN (ET,PV,D) 59,132

Black Watch Jewel (ET,D) 45,213

Holy Cross Axel (D) 59,125

BLACK HILLS CRICKET 62,954

Windemere Grasshopper 58,479

EZ Acres Nathaniel 26,710

Fraser Lane's Jellybean -11241- 34,894

Jock of Glengorm 18,549

DH Xanadu (D) 29,671

Trafalgar Dimitri 15 (ET,PV,D) 55,086

Holy Cross Solara 55,721

Windemere Duke (AI,D) 54,409

Morgana of Blackwatch (AI,D) 47,766

Calliope is a feminine red heifer who has all the makings of becoming an excellent breeding piece when it comes to her pedigree on both sides. Just two generations back she's got the famed Jock of Glengorm and is loaded with Windemere, EZ Acres, Black Watch and Trafalgar. She's smooth on the move with a big hip, great lines and easygoing temperament. This is a heifer with lots of potential, don't miss out on what promises to be a productive animal and stand out brood cow for your fold!



18

BUU Journey

AHCA #68,529 • Female • Black • 2/8/24

Lone Star Highlands, Whitesboro, TX & Collin Demuth, York, NE

OPEN HEIFER

Trafalgar Dimitri 15 (ET,PV,D) 55,086

HOLY CROSS BLACK JACK (PV,D) 58,135

Holy Cross Bella (D) 49,428

CBS Jameson (AI,D) 53,213

CBS JAZZY (D) 59,394

LEA Jaime 52,623

CBS Yaz's Yukon Jack (D) 51,519

EZ Acres Pauline (PV,D) 42,998

ST Gunsmoke (D) 47,008

Double LL Elle 06 44,202

Thorbardin's Gandolf (D) 30,569

CBS Jade 13Y (D) 51,121

Sunset's Bel Yell 22 (D) 46,398

LEA Fairly 51,146

An amazing opportunity for some of the most sought-after black Highland genetics out there. Her sire and dam sure don't need an introduction in the Highland World. This female is downright good from the ground up and is extremely feminine as she extends out of her head and neck. She continues to get better every day and would be the perfect fit for any junior looking for a docile calf. This one has all the right pieces and would be extremely useful in any breeding operation. Don't miss this beautiful, black heifer to enhance your herd.



19

MES Silver Silvia (AI,PV,D)

AHCA #68,586 • Female • Dun • 1/30/24

Schulte Farms, Pleasanton, NE

OPEN HEIFER

LEA Becket (D) 42,976

FINLEY FALLS DUNCAN (D) 54,601

LEA Faye (D) 48,224

LEA Ianto Jones (D) 52,474

BENNACHIE'S MS. NATASHA (PV,D) 62,039

Bennachie's Bethany (PV,D) 57,431

DH Montgomery (AI,D) 27,923

LEA In Vogue 36,296

Flatheads Glen Moray (D) 45,515

LEA Corrie 44,221

Skye High X-Axis (D) 50,046

LEA Queen Regent 28,971

LEA Harrison-3 (D) 51,762

Bennachie's Rebecca (PV,D) 48,978

Introducing MES Silver Silvia, a stunning heifer sired by Finley Falls Duncan, the two-time Denver Stock Show Champion Bull. Silvia boasts a striking presence, balanced structure and outstanding genetics that make her a top contender for the show ring and a valuable addition to any breeding program. With her calm temperament and eye-catching conformation, she is poised to make a significant impact. Don't miss this opportunity to bring champion bloodlines into your herd!

DAVID DEMUTH MEMORIAL

HUSKER STATE Highland CLASSE



20

SFF Rachel

AHCA #69,330 • Female • Red • 7/18/23

Spring Flight Farm LLC, Elmira, NY

OPEN HEIFER

Spring Flight Archduke of Xa(D) 43,814

SFF KNIGHT VISION (D) 55,911

Spring Flight Templar's Dream 48,310

Sunset Limited Edition (AI,D) 42,794

SPRING FLIGHT ISIS 53,454

Spring Flight Empress 50,024

Bert of Glen Haven (D) 40,713

Spring Flight Xanadu (D) 39,439

TBR Morty (D) 38,998

Skye High Templar 43,789

Jock of Glengorm 18,549

Sunset Eb's Harmony CA10735

Willow Bend Donald (D) 42,835

Ridge Top Tara 30,998

SFF Rachel is a red heifer with brindle markings around the head. As an intermediate yearling heifer she is on track to breed this coming summer. Rachel has the combination of an impressive pedigree and phenotype that speaks for itself. Correct in her conformation, she walks out well and has great feet; a joy to observe. Spend some time getting to know her and you will be rewarded with a gal that loves to be combed. Her lineage includes many Spring Flight animals as well as Sunset Limited Edition as a grandsire along with Ridge Top and Glengorm folds.



21

Howling Springs Dulce

AHCA #65,970 • Female • Red • 6/7/23

Howling Springs Farm, Elverson, PA

OPEN HEIFER

Autumn Mist Shamgar (AI,D) 43,733

STR SAMUEL (ET,PV,D) 63,947

WF Caitlin (D) 45,622

GOF Beau Geste 17B -7180- (D) 34,041

Maple Lea Millicent 8M-12803-(D) 39,045

SBH Jock of Springbrook (D) 39,451

WF Ash-Lee 41,252

Samhach Buidhe of Bairnsley (AU,AI,D) 49,802

Summit Ranch Whitney (ET,PV,D) 48,302

Windemere Aspen (AI,PV,D) 51,445

Cobblestones Marilee (PV,D) 48,082

STR Burning It Down (ET,PV,D) 56,931

HOWLING SPRINGS DREAM WHIP 60,589

Windemere Dream 54,924

Dulce's shape, design and sweet disposition will make you fall in love with her. This feminine fronted heifer will captivate you with her look and style. She is super sound at the ground which leads up to her straight top line and square hip. Dulce is a smaller framed heifer packed full of elegance. As she grows she just keeps getting better and better. Her grandsire STR Burning It Down, 2020 NWSS Grand Champion Bull, sure has added solid structure to back her. We feel she will prove her worth in production!



22

CSF Honeybell (PV,D)

AHCA #68,600 • Female • Yellow • 6/4/23

Climbing Stump Farm, Harris, MN

OPEN HEIFER

CSF Rutherford (AI,D) 56,761

CSF ROOSEVELT (D) 59,312

Gray Owl's Brianna 52,286

Northern Oaks Fabian 607 (D) 44,948

WE TIRED HONEY (D) 52,517

We Tired Dora 49,202

GOF Ralph 21R -4094- (D) 18,498
Gray Owl's Claire 52,289GH Mr Roberts (D) 45,469
JAR Britni 43,433VAS Weatherhill Noble 03 40,670
VAS Weatherhill Flame 96 28,958LEA Broderick (D) 42,979
We Tired Juliette 41,346

CSF Honeybell is in the third calf crop of CSF Roosevelt, a larger framed, smooth-musled bull whose calves have been attractive, growthy and correct. Her dam, We Tired Honey, has produced a calf every year since 2016 including the bull CSF Humphrey, and the females CSF Honeycomb, CSF Honeysuckle and CSF Honeytree, all of which were shown and sold at the NWSS in Denver. Honeybell's three generation pedigree carries the older names of GOF, VAS Weatherhill and JAR, as well as the younger names LEA, Gray Owl and We Tired. Honeybell is nt821 negative. For more information visit: www.climbingstumpfarm.com.



23

CSF Harmony (PV,D)

AHCA #67,434 • Female • Red • 4/26/23

Climbing Stump Farm, Harris, MN

OPEN HEIFER

CSF Rutherford (AI,D) 56,761

CSF ROOSEVELT (D) 59,312

Gray Owl's Brianna 52,286

GOF Ralph 21R -4094- (D) 18,498

CSF HONEYDEW (AI,D) 60,223

We Tired Honey (D) 52,517

GOF Ralph 21R -4094- (D) 18,498
Gray Owl's Claire 52,289GH Mr Roberts (D) 45,469
JAR Britni 43,433GOF Marshall 16M CA3636
GOF Melinda 1M CA3490Northern Oaks Fabian 607 (D) 44,948
We Tired Dora 49,202

CSF Harmony is the second heifer of three heifers out of CSF Honeydew, one of our best young cows. Honeydew's sire, GOF Ralph, was an influential bull noted for his high quality daughters. Harmony's sire, CSF Roosevelt, a grandson of Ralph, looks to be continuing in the Ralph tradition. 32 of Roosevelt's 45 offspring have been heifers, and We Tired Honey, Honeydew's dam, has produced nine calves in nine years, seven of which have been heifers. Harmony is a striking heifer with a brindled face, good conformation and volume. Harmony is nt821 negative. For more information visit: www.climbingstumpfarm.com.



24

SFF Rising Moon

AHCA #67,530 • Female • Red • 4/12/23

Spring Flight Farm LLC, Elmira, NY

OPEN HEIFER

Spring Flight Archduke of Xa(D) 43,814

SFF KNIGHT VISION (D) 55,911

Spring Flight Templar's Dream 48,310

Black Watch Emmett (PV,D) 38,623

SFF Keltic Moon (AI,D) 55,909

Spring Flight HalfMoon 53,034

Bert of Glen Haven (D) 40,713
Spring Flight Xanadu (D) 39,439TBR Morty (D) 38,998
Skye High Templar 43,789DH Excel (D) 34,004
Four's Emma (D) 34,742Spring Flight Emperor (PV,D) 50,754
Spring Flight Demi Moon 48,683

Spring Flight is excited to offer SFF Rising Moon, a beautiful red heifer in this year's sale. She is a 5th generation of our Spring Flight Moonlight family that began in 1999. Cows come and go but some maternal lines have such depth and quality that they become foundation animals. Our Moonlight family offers strong genetics that should please the most discerning breeder. We have retained a number of females from this line and feel it is time to offer this exceptional heifer. She is built right and should have longevity along with an excellent temperament.



25

Trinity's Aphrodite

AHCA #65,488 • Female • Red • 1/22/23

Trinity Farms, LTD, Greeley, CO

OPEN HEIFER

LEA Becket (D) 42,976

FINLEY FALLS DUNCAN (D) 54,601

LEA Faye (D) 48,224

Silva's Double Harley (D) 58,357

TRINITY'S GNARLY 62,399

LEA Noelle 56,651

DH Montgomery (AI,D) 27,923

LEA In Vogue 36,296

Flatheads Glen Moray (D) 45,515

LEA Corrie 44,221

Silva's Double Vision (D) 49,200

Silva's Hazel Meg 50,603

Sunset Rebel Yell -13784- (D) 46,398

LEA Haven (D) 50,580

Aphrodite is a sweetly designed two-year-old heifer, ready to be mated up with the bull of your choice. A very pretty heifer with a traditional Scottish style. Aphrodite moves easily with a gorgeous stride. Good spring of rib and solid hip make her perfect mama cow material. She is a Finley Falls Duncan daughter combined with more LEA-White breeding and strong Silva's genetics on her maternal side. Halter broke and shown by an AHCA junior in 2024. A great show prospect or tremendous addition to your herd.



26

T-Ross Summit Ranch Lundy (ET,PV,D)

AHCA #64,368 • Female • Red • 3/10/22

T-Ross Cattle Company, Chippewa Falls, WI

BRED HEIFER

Baile Byron Hansel CA2362

BYRON RUSSELL OF KINDWOOD (D) 32,549

Boglenn Heather CA2925

Nordesk Cuchulain CA2074

Nordesk Beitiris Ruadh CA1914

Trossach Duc of Endor CA2517

Arbutus Sheena CA1932

Oilibhreis of Strathallan UK6894

Lady 28th of Leys UK26179

Jock 24th of Leys 17,470

GILCHRIST'S ERIN (D) 19,454

Gilchrist's Ryan 16,975

KU Minn Barnie 14,692

MG Golden Harvest 2nd 14,183

T-Ross Summit Ranch Lundy "Bucket", at a loss for words how special this one is to all of us. Flexibility, balance and comfort from an athleticism stand point. Not only is she cool to look at, she has all the correctness to make a long lasting cow. Capable of maintaining and eating for three, herself, the future calf at her side, and the calf inside of her when bred back, surely she will excel at this. Calm enough in disposition that she provided a first show experience for a 4 year old! **Pasture exposed to Windemere Hotshot #60,477 9/27-10/30/24.**



27

CBS Bliss X STR Encore

Golden Hour Farm, Hyrum, UT • CONFIRMED HEIFER PREGNANCY - ANGUS RECIP

STR Ruthless Game (AI,D) 53,128

STR ENCORE (ET,PV,D) 62,210

STR Enchanted (ET,PV,D) 52,401

Samhach Buidhe of Bairnsley (AU,AI,D) 49,802

Star Lake Victoria (D) 47,263

Karabin Farm's Tuffy (D) 42,152

Summit Ranch Shaelyn (AI,PV,D) 42,734

Thorbardin's Gandolf (D) 30,569

CBS Jade 13Y (D) 51,121

CBS Jameson (AI,D) 53,213

CBS BLISS (D) 60,644

A-Scottish-Bluebell Heritage 56,036

Raindancer of Five Star Farm (D) 40,675

Clachan Glas Xahlia CA15713

A tried-and-true genetic combo of style and elegance in this mating. CBS Bliss is a stylish, sweetheart of a cow. Frosted coat covering a frame boasting exceptional feminine features. Bliss's pedigree is a great cross of Canadian and American influence that cannot be duplicated. An enchanted mating to the brindle sire, STR Encore. This sire adds a complimentary national winning pedigree. **This heifer calf is due to be born July 26th to an Angus recip.**



28

Honey Creek Roxanne X STR Encore

Golden Hour Farm, Hyrum, UT • CONFIRMED HEIFER PREGNANCY - HEREFORD RECIP

STR Ruthless Game (AI,D) 53,128

STR ENCORE (ET,PV,D) 62,210

STR Enchanted (ET,PV,D) 52,401

Gray Owl's Borg (D) 53,568

HONEY CREEK ROXANNE (D) 57,149

Honey Creek Rachel 49,422

Samhach Buidhe of Bainsley (AU,AI,D) 49,802

Star Lake Victoria (D) 47,263

Karabin Farm's Tuffy (D) 42,152

Summit Ranch Shaelyn (AI,PV,D) 42,734

GH Mr Chips (D) 45,568

JAR Dandelion 43,432

Green Ridge's Pepper 42,244

Honey Creek Amy 41,337

As good as it gets! Roxanne is an exquisite Highland female. She starts on the ground with sound movement, tracking effortlessly. Roxanne has a wide hip that transitions to natural depth of rib, a smooth shoulder that blends into her neck and gorgeous Highland head. Udder structure is superior. Mated to the 2019 National Grand Champion, STR Encore, a combination of excellence in this heifer embryo! **Hereford recip due June 25th.**



29a

Skye High Ma Belle (D)

AHCA #68,017 • Red • 10/13/23

Skye High Farms, Coldwater, MI

CHOICE OF FLUSH

Skye High Cornerstone (D) 54,167

SKYE HIGH GIBRALTAR (D) 58,339

Skye High Yellow Bird (D) 50,681

RTH VanNorman (D) 48,200

SKYE HIGH DIXIE BELL 54,748

Skye High Xylene 49,519

LEA Haaken (D) 51,761

Skye High Vermillion (PV,D) 46,978

Skye High Wayward Son (ET,PV,D) 48,809

SPH Sassy 42,763

Starshire's Nigel (D) 38,255

RTH Smokin Lilly Belle 35,579

SPH Uberdude (D) 45,567

Lilian of Five Star Farm (AI) 35,828

Here's a cool one! Choose your flush from these three exceptional and genetically diverse Skye High females! Skye High Mair and Ma Belle have both been hitting the show circuit with great success winning several junior and open show championships. And throw on there Skye High Meketaten, a gorgeous, big boned white who is just getting warmed up with Denver being her second show this year. We really are excited about all these females and look forward to not only sharing them with the public but utilizing them ourselves. Follow Skye High social media for further details and updated photos/videos.



29b

Skye High Mair (PV,D)

AHCA #68,016 • Red • 6/22/23

Skye High Cornerstone (D) 54,167

SKYE HIGH GIBRALTAR (D) 58,339

Skye High Yellow Bird (D) 50,681

CH Aloysius (D) 39,178

SKYE HIGH VERMILLION (PV,D) 46,978

Gilchrist's Angela (D) 27,321

LEA Haaken (D) 51,761

Skye High Vermillion (PV,D) 46,978

Skye High Wayward Son (ET,PV,D) 48,809

SPH Sassy 42,763

DH Churchill (AI,D) 27,914

Klair of Five Star Farm 35,826

Jock of Glengorm 18,549

Gilchrist's Andrea II 22,541



29c

Skye High Meketaten (ET,PV,D)

AHCA #68,568 • White • 5/16/23

LEA Forbes (D) 49,174

LEA HAAKEN (D) 51,761

LEA Valkyrie 36,286

LEA Denovan Adam (D) 46,396

LEA Ciara 44,111

LEA Raleigh (D) 31,862

LEA Oberlin (D) 26,243

Weatherhill Caesar 37,965

QM Snowflake 37,704

QM Mr. President (D) 44,061

OSCEOLA MEKETATEN (D) 49,718

Osceola Nefertiti 39,275

Quiet Meadow Lightning (D) 33,185

LEA Saffron Gold 31,724



30

TC Loretta (AI,D)

AHCA #65,120 • Red • 9/23/22
TC Highlands Farm, Pleasureville, KY
FLUSH - SIRE OF BUYER'S CHOICE

Sunset Rebel Yell -13784- (D) 46,398
LEA NIADH (PV,D) 57,933
LiTerra Jordyn (D) 53,390

HWA Garth (D) 54,847
HILLS N HOLLA DOLLY 58,879
LiTerra Priscilla 50,732

Sunset Limited Edition (AI,D) 42,794
Northridge Fargo CA9266

Skye High X-Axis (D) 50,046
LEA Echelon 47,140
Misty Morn's Brutus 08 (D) 48,557
RGC's Spice 49,522

Landelley's Cody (D) 41,127
Li Terra Promise (D) 35,082

Very rarely do females in the show ring come along that are undeniably as dominating as TC Loretta has been in 2024! Starting in Denver with a division win and continuing with championship banners at MAHA, NCHCA, York, Indiana State Fair, Keystone, Southeast Highland Show and the Cornhusker Classic. 10 Judges in 3 times zones, can't be wrong! Let your imagination run wild as you choose the perfect mating for this premium lot. This lot is an investment in your genetic program. We will share with the purchaser our short list of sires who we feel would compliment her. *Buyer has ONE YEAR to complete flush.



31

T-Ross Summit Ranch Lilas (ET,D)

AHCA #64,369 • White • 3/13/22
Emily Blodgett, Colfax, WI
FLUSH - SIRE OF BUYER'S CHOICE

Philip 1st of Craycombe UK7232
SCOTT OF CRAYCOMBE (D) UK7557
Jehudith 1st of Craycombe UK29623

Marsh Creek Challenger 21,752
MARSH CREEK SNOWFLAKE 26,690
Lady Buttercup L.R. 20,635

Philip of Strathallan UK6983
Capleadh 15th of Cladich UK29188

Gille Og of Shenavallie UK6801
Fraoch of Dun-Na-Mara UK26751

Gilchrist's Victor 19,339
JLR Ginger Flower 19,410

MG Golden Harvest 15,399
Lady Lillian W de Padilla 17,091

T-Ross Summit Ranch Lilas, she will forever be a ranch favorite. She truly preserves the heritage of the breed. Sired by the great Scott of Craycombe and daughter of Marsh Creek Snowflake, two legacies that have both withstood the test of time. Her long list of attributes is no surprise given the pedigree she has backing her. Her long muscle pattern, level hips and smooth movement are just a few of the highlights on that list. To top it off her disposition is second to none. A limited opportunity to grow or add value to your herd.



32

WL Liberty X Philip of Glengorm

Windland Flats, Princeton, MN • SEXED HEIFER EMBRYOS

Philip of Richmondhill UK0125
PHILIP OF GLENGORM (D) 64,533
Sheila Mor 12th of Glengorm UK0879

Jock of Glengorm 18,549
WL LIBERTY (ET,D) 65,714
Gray Owl's Britta (D) 55,429

Charles of Richmondhill UK0004
Heather of Richmondhill UK0033

Craigowl 7th of Glamis Castle UK3195
Sheila Mor 10th of Glengorm UK0509
Jock of Benmore UK6800
Bheadareachd 2nd of Glengorm UK23451

GH Mr Chips (D) 45,568
JAR Britni 43,433

75% of this pedigree is genetics direct from Scotland. An additional 25% comes from Liberty's dam, Gray Owl's Britta, an absolute powerhouse cow who delivers in the pasture year after year. Liberty is also the daughter of legendary Jock of Glengorm. She is thick, deep and wide like Jock and Britta. These embryos will boast the first combination of 1980's powerhouse Glengorm genetics with 2020's Glengorm genetics that still compete in the top shows in Scotland. Philip has produced some of our best calves in the pasture this year. Nt821 negative by pedigree. Learn more at windlandflats.com. **3 IVF-sexed for heifer embryos**



33

EVA Sunset X Basswood of Swains GBB 1B

Rocky Flats Ranch LTD., Hygiene, CO • EMBRYOS

Gille Buidhe of Benmore CA3581

BASSWOOD OF SWAINS GBB 1B (D) 27,090

GOF Nasturtium 4N CA3639

Duncan of Big Ridge (D) 49,805

EVA SUNSET (D) 55,301

Thistle Hill Dawn 48,388

Donald Ruadh of Glenogle UK6657

Seud Buidhe 2nd of Benmore UK22727

GOF Lurach 9L CA3338

GOF Kimberley CA3178

Ridge Top Haydn's Choice (PV,D) 42,523

RRH5G Myrtle Rose I 34,432

Zorow of Dundonald (D) 41,160

HI Oscar96 Isra 04 (D) 41,284

Stemming from one of the most influential folds in North America, Basswood and progeny stand the test of time. This brindle bull produces stout, sound females with increased milk production over their peers. The bulls have also been noted as some of the best produced by individual farms. EVA Sunset is a yellow Impact Dam. One of our most powerful cows with huge base width and muscularity. Excellent width of hip and spring of rib, and a good foot on her. Sunset is granddaughter of Ridge Top Haydn's Choice, lineage with excellent breed character, front end structure and rib shape. **3 grade #1 or #2 embryos**

34

HM Sandra X STR Armageddon

Rocky Flats Ranch LTD., Hygiene, CO • EMBRYOS

Rioghail of Balmoral -7599- (D) 28,597

STR ARMAGEDDON (ET,D) 56,854

Yarnelle Farms Betula (AI,D) 39,567

CBS Onyx 10Y (D) 50,849

HM SANDRA (D) 57,863

Apple Hill Sandra 46,324

Campbell Og of Dalriada UK7255

Megan 22nd of Balmoral UK30861

Scott of Craycombe (D) UK7557

Swains Betula GBB 8B -6908- 24,803

LEA Denovan Adam (D) 46,396

Summit Ranch Rubylyn (AI) 41,151

PPM Toro Negro 31,819

Apple Hill Zoe 35,425

Armageddon was the 2020 National Western Reserve Grand Champion Bull, as well as claiming other champion and reserve titles across the country. Not only that, he produced Husker's entire 2020 calf crop. We're told this is the best, most consistent, and docile group of calves ever produced on the ranch. HM Sandra is a red cow with great maternal instincts and easy calving. She is sired by CBS Onyx 10Y, a black bull with a solid genetic background. An opportunity to combine powerful maternal traits, structural soundness and the uniformity of registered cattle all in one. **3 grade #1 embryos**



35

Valley View Dixie X Skye High Kodiak Pinch

KeSaBe Farm, Prosperity, PA • EMBRYOS

Skye High Gibraltar (D) 58,339

SKYE HIGH KODIAK PINCH (PV,D) 62,693

Selby's Torren (AI,D) 52,648

Skye High Cornerstone (D) 54,167

Skye High Yellow Bird (D) 50,681

Samhach Buidhe of Bairnsley (AU,AI,D) 49,802

Wagner's Molly 39,048

OSF Brogan 6th (D) 51,034

RGC's Matilda 51,139

MJA Kent (D) 55,478

MJA Lucy 54,832

Valley View Brutus (D) 59,688

VALLEY VIEW DIXIE (D) 62,754

Valley View Lacie 57,055

Valley View Dixie is a deep-ribbed, wide tracking black heifer. During her show career, judges frequently commented on her long stride, how well she moved around the ring and her overall femininity and angularity. Despite being a December born heifer, Dixie consistently placed near the top of her division including multiple grand champion placings in local shows. The sire, Skye High Kodiak Pinch, 2023 NWSS Reserve Grand Champion Bull, brings generations of breeding focused on conformational soundness and breed characteristics to the pairing. Don't miss this outstanding combination of power, grade and quality. **4 grade #1 or #2 embryos**



36

STR Adrenaline X Howling Springs Barron the Bull

Howling Springs Farm, Elverson, PA • EMBRYOS

Howling Springs King Maker (ET,PV,D) 59,981
HOWLING SPRINGS BARRON THE BULL (D) 63,706
 HSC Cacia 59,321

Highland Spice Hickory (D) 59,533
STR ADRENALINE (PV,D) 62,099
 Star Lake Acadia (D) 51,514

Trafalgar Victor (ET,PV,D) 46,631
 Star Lake Victoria (D) 47,263
 STR Armageddon (ET,D) 56,854
 DH Caitlin II (D) 49,142

Legend of Cathach Heritage 15C -16727- 58,385
 CBS Rosanna 54,777

Trafalgar Sampson II (D) 42,753
 Star Lake Amber 43,213



STR Adrenaline



Howling Springs Barron the Bull

This is a golden opportunity! Adrenaline's performance and striking appearance quickly made her a fan favorite. She grabbed attention by multiple cattlemen, competing against other breeds, gaining the title of Reserve Supreme Female at KILE 2023. As a yearling, she achieved NWSS Reserve Champion Female 2023 followed by NWSS Reserve Champion Junior Female 2024. Adrenaline continues to pass her traits to her calves. Her mating with Howling Springs Barron the Bull NWSS 2024 Grand Champion Bull sure will catch your eye. This combination of genetics will leave a lasting impression! Visit our website for pictures of offspring www.howlingspringsfarm.com. Natural mating with embryos collected through Vytelle. **3 grade #1 embryos**

37

LiTerra Malda/LiTerra Malia X MacDonald of Esk

LiTerra, Grove City, PA • EMBRYOS (MIXED MATING)

Urras Achnacloch UK7168
MACDONALD OF ESK 18,546
 Princess Matilda 36th of Strathallan UK26730

Scott of Craycombe (D) UK7557
LITERRA MALDA (ET,D) 66,326
-OR- LITERRA MALIA (ET,D) 66,327
 Malda 49th of Achnacloch 18,547

Prionnsa 4th of Leys UK6792
 Neonean Dhonn 14th of Achnacloch UK27322

Jamie of Douglas UK6501
 Princess Matilda 21st of Strathallan UK22406
 Philip 1st of Craycombe UK7232
 Jehudith 1st of Craycombe UK29623

Tearloch 0g of Achnacloch UK7120
 Malda 31 of Achnacloch UK26686



LiTerra Malda



LiTerra Malia

Walking history! Scott of Craycombe daughters, Malda and Malia, from 27-year-old embryos collected from Malda 49th of Achnacloch, a prominent female imported from Scotland in 1986. These fancy ET heifers fit right in and are competitive with today's cattle. Malda and Malia eggs were pooled and mated with the rare MacDonald of Esk, imported 40 years ago, carrying Achnacloch, Leys Castle and Strathallan fame. Talk about old line Scottish genetics! Champions then, relevant now. Yes, they do still make 'em like they used to! DNA typing will be done at seller's expense to determine dam. Embryos stored at Boviteq, Syracuse, NY. **3 grade #1 embryos**

38

Bennachie's Hazel X STR Encore

Husker Show Cattle, York, NE • EMBRYOS

STR Ruthless Game (AI,D) 53,128
STR ENCORE (ET,PV,D) 62,210
 STR Enchanted (ET,PV,D) 52,401

Coinneach Lochiel Heritage 22C (D) 60,825
BENNACHIE'S HAZEL (PV,D) 63,838
 Bennachie's Pacana (D) 60,834

Samhach Buidhe of Bairsley (AU,AI,D) 49,802
 Star Lake Victoria (D) 47,263

Karabin Farm's Tuffy (D) 42,152
 Summit Ranch Shaelyn (AI,PV,D) 42,734
 Fingal of Auchnacraig (D) 43,130
 Clachan Glas Yaara CA15717

RAM Zander (D) 52,398
 MHH Pecan (D) 54,007



Bennachie's Hazel



STR Encore

Tremendous opportunity! When we were evaluating sires to flush Bennachie's Hazel to STR Encore quickly rose to the top. Study both of these pedigrees and you too will love the potential these two offer. After seeing the the bull calf this mating produced for the Keller Family, we feel you definitely can't go wrong with this pairing! Embryos were collected by IVF through Vytelle. **3 grade #1 embryos**

39

Dirigo Frederique X Thorbardin's Gandolf

Highland Cattle Foundation, Brighton, CO • EMBRYOS

GOF Chieftain 17C -7871- 30,237

THORBARDIN'S GANDOLF (D) 30,569

Cape St. Mary's Melinda (D) 25,076

Ben Eniglair of Scone Palace (UK,D) 15,745

DIRIGO FREDERIQUE (ET,D) 29,104

Owl Rock Imber (D) 17,971

GOF Zaphod 12 CA5830
GOF Rosered 20R CA3999

Craigievars Ruadh Gregory -4661- 19,915
Cape St. Mary's Mariane 19,211

Gille Ruadh of Glenforsa UK6359
Ella Ruadh 6th of Scone Palace UK24862

Trafalgar Marke 15,018
Owl Rock Firefly 16,061

FULL SIBLING TO
EMBRYOS



Thorbardin Ranch said that Frederique was the best Highland cow in their herd! Their operation was one of the largest beef producing outfits in the Highland industry. They were very critical and selective with their cattle. Gandolf remained in their breeding program for several years with calf crops known for growth rate and functionality. Fair market value is \$800. Purchase price in excess of FMV is tax deductible as permitted by law. The HCF will pay for DNA parent verification prior to calf registration. **3 grade #1 or #2 embryos**

40

Marigold of Tulach Ard X Dirigo Forceful

Highland Cattle Foundation, Brighton, CO • EMBRYOS

Ben Eniglair of Scone Palace (UK,D) 15,745

DIRIGO FORCEFUL (ET,D) 29,105

Mayfield Heather 17,379

Lochan Ora Awesome 18,795

MARIGOLD OF TULACH ARD (D) 24,894

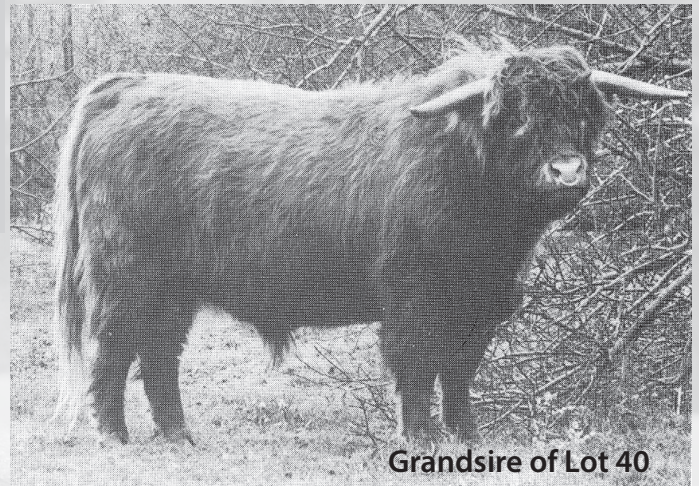
Marguerite of Tulach Ard 19,498

Gille Ruadh of Glenforsa UK6359
Ella Ruadh 6th of Scone Palace UK24862

Alasdair Ruadh of Cladich 13,470
Mayfield Flora McDonnell 15,900

Lochan Ora Magic 15,149
GA Peppie Delric 10,867

Ballach Og II of Smaull 17,961
Losaid Morag Ruadh 14,509



Grandsire of Lot 40

Forceful was a brindle bull with a 60 lb BW and 1500 lb mature weight. Thorbardin Ranch considered him to be one of their premier beef bulls producing a large number of high choice and prime carcasses. He was used in their Highland and commercial herds for both calving ease and carcass quality. The registered Tulach Ard fold of WA was prolific in the 1980s and 90s. Outcross genetics are seen in Marigold's pedigree. Fair market value is \$800. Purchase price in excess of FMV is tax deductible as permitted by law. The HCF will pay for DNA parent verification prior to calf registration. **3 grade #1 or #2 embryos**

41

Uallach Dubh 6th of Pollok Sired Embryo Package

Bairnsley Highland Cattle, Victoria, Australia • EMBRYO PACKAGE

Uallach Dubh 4th of Pollok UKNEP060235

UALLACH DUBH 6TH OF POLLOK (D) UKNEP080335

Suisan Ruadh 45th of Pollok UKNEP040188

Lord Montagu of Old Greenlaw UK0002

ROIMHACH 2ND OF BAIRNSLEY (AI,D) AU8021

Roimhach of Bairnsley (AI) AU6525

John of Pollok UKNEP019088

Una Dubh 8th of Pollok UKNEP96EPH8

UKNEP080335

Gille Riabhach of Pollok UKNEP958289
Suisan Ruadh 6th of Pollok UKNEP90PB25

Ruaidhri 5th of Flodden UK7709
Lady Jane of Old Greenlaw UK0122

Rushmore Bracken UKGRC907582
Regan of Bairnsley AU5521

Uallach Dubh 4th of Pollok UKNEP060235

UALLACH DUBH 6TH OF POLLOK (D) UKNEP080335

Suisan Ruadh 45th of Pollok UKNEP040188

Brogach 4th of Craigowmill UK040406

ISLA RUADH OF BAIRNSLEY (AI,D) AU7282

Neila OG of Bairnsley (AI) AU4450

John of Pollok UKNEP019088

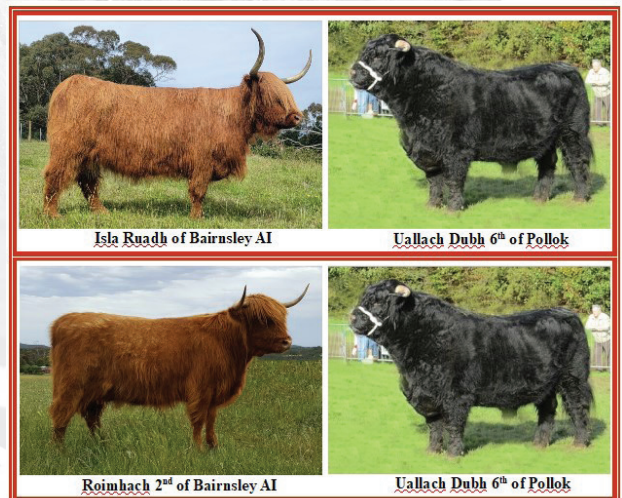
Una Dubh 8th of Pollok UKNEP96EPH8

UKNEP080335

Gille Riabhach of Pollok UKNEP958289
Suisan Ruadh 6th of Pollok UKNEP90PB25

Brogach 1st of Austie UKVTA920310
Julie of Craigowmill UK960098

Gusgurlach of Windrush (D) CA6015
Molly of Dandaloo (ET) AU1429



Isla Ruadh of Bairnsley AI

Uallach Dubh 6th of Pollok

Roimhach 2nd of Bairnsley AI

Uallach Dubh 6th of Pollok



These embryo combinations will give you both very unique Scottish pedigrees, as well as the culmination of 3 decades of breeding at Bairnsley, where our primary focus is on temperament, feet and udders. But, rest assured, the calves that result will be correct and stylish, with heaps of Highland character. Both Isla & Roimhach, as well as Uallach Dubh 6th, have produced very feminine, maternal types with a traditional Scottish look. Each have had progeny that have gone on to win Australian National Show Grand Champion Female. Semen stored at Reproduction Specialty Group, Lebanon, MO. **3 grade #1 embryos; 1 Roimhach & 2 Isla**

42

Capleadh 18th of Craigowmill X Ceannard 2nd of Stockley

Craigowmill Farm, Kinross, Scotland • EMBRYOS

Ceannard of Stockley UKSDP180043

CEANNARD 2ND OF STOCKLEY (UK,D) 67,775

Casair 6th of Craigowmill UKBRC091345

Ruaridh 1st of Ubhaidh UK090078

CAPLEADH 18TH OF CRAIGOWMILL (D) UKBRC212382

Capleadh 11th of Craigowmill UKBRC121622

Ceannard of Miungaigh UKAMM110038

Alice 13th of Tordarroch UKCTO090096

Gille Dubh 3rd of Craigowmill UKBRC040490

Casair Dubh of Dalriada UKDCM020146

Torquill 1st of West Merklund UK030085

Flora 5th of Lagg UK010020

Fear Siridh of Balmoral UKBAQ070192

Capleadh 5th of Craigowmill UKBRC070972



Capleadh's sire was Ruaridh 1st of Ubhaidh, the outstanding Highland Champion of Champions Bull and Interbreed Reserve of the Decade 2011-2020. Ceannard's dam was Casair 6th of Craigowmill, Oban Champion in 2012. His grandsire, Ceannard of Miungaigh, was especially selected by the bull's breeders and bought directly from the farm as a calf for his outstanding qualities. **Embryos stored at Animal Breeding Europe, Edinburgh, Scotland. 3 grade #1 embryos**



43

Flora of Craigowmill X Ceannard 2nd of Stockley

Craigowmill Farm, Kinross, Scotland • EMBRYOS

Ceannard of Stockley UKSDP180043

CEANNARD 2ND OF STOCKLEY (UK,D) 67,775

Casair 6th of Craigowmill UKBRC091345

Lachland of Earn UKMNA160665

FLORA OF CRAIGOWMILL (D) UKBRC222444

Flora 11th of Mottistone UKMMP180937

Ceannard of Miungaigh UKAMM110038

Alice 13th of Tordarroch UKCTO090096

Gille Dubh 3rd of Craigowmill UKBRC040490

Casair Dubh of Dalriada UKDCM020146

Hamish 2nd of Drumfurrich UK20015

Erin 3rd of Earn UKMNA090432

Eoin Mhor 8th of Mottistone UKMP100326

Flora 4th of Mottistone UKMMP110402



Flora's dam was Flora the 11th of Mottistone and sold as a 10-year-old for 9000£. Flora herself was bought as the highest priced heifer in the dispersal sale of the Mottistone Fold. Ceannard's dam was Casair 6th of Craigowmill, Oban Champion in 2012. His grandsire, Ceannard of Miungaigh, was especially selected by the bull's breeder and bought directly from the farm as a calf for his outstanding qualities. **1 grade #1, 1 grade #2 embryos**



44

Ledyards Tiffany Talia X STR Encore

Mid-Lakes Highlands, Mindoro, WI • SEXED HEIFER EMBRYOS

STR Ruthless Game (AI,D) 53,128

STR ENCORE (ET,PV,D) 62,210

STR Enchanted (ET,PV,D) 52,401

Trafalgar Dominik (ET,PV,D) 55,085

LEDYARDS TIFFANY TALIA (D) 59,209

Ledyards Topaz Tiffany (D) 57,193

Samhach Buidhe of Bairsley (AU,AI,D) 49,802

Star Lake Victoria (D) 47,263

Karabin Farm's Tuffy (D) 42,152

Summit Ranch Shaelyn (AI,PV,D) 42,734

CBS Yaz's Yukon Jack (D) 51,519

EZ Acres Pauline (PV,D) 42,998

BRF Xenon (D) 49,339

Skye High Topaz 43,790

Talia has been a winner since the first year she was shown in 2020 and won the 2021 AHCA ROE Show Heifer of the Year. Calving in May 2022, she didn't miss a beat winning Reserve Supreme Champion Cow/Calf Pair at the World Beef Expo against 15 plus breeds and 2022 ROE Cow/Calf Pair of the Year. In 2024 she won the coveted Grand Champion Cow/Calf Pair at the NWSS. Watch for her at the NWSS with her 2024 bull calf. She is tall, deep and long with a beautiful udder. STR Encore was the 2023 NWSS Grand Champion Bull. **3 heifer reverse sex-sorted grade #1 embryos**



45

SSH Eau Claire X Top Gun I of Mapleview

KeSaBe Farm, Prosperity, PA • EMBRYOS

Ruger of Mapleview (AI, D) 26,594

TOP GUN I OF MAPLEVIEW (ET,T,D) 31,286

Finola of Dirtane 20,864

Skye High Bohemian (D) 52,684

SSH EAU CLAIRE (PV,D) 56,041

LiTerra Avery (D) 48,846

Scott of Craycombe (D) UK7557

EZ Acres Kristin 22,792

Shelterwood Tiarnan -4365- 18,337

Paula Og 2 of Dirtane (t) 18,469

Skye High X-Axis (D) 50,046

Trafalgar May 38,268

Landelley's Cody (D) 41,127

Li Terra Avalon 39,403

SSH Eau Claire is a proven asset to any breeding program with her impressive pedigree, unassisted calvings and exceptional consistency of weaning strong, fast-growing calves including the 2023 Southeast Highland Show Reserve Champion Bull. Meanwhile, Top Gun I of Mapleview delivers powerful old genetics. His calves are known for their performance in the ring and in the field, consistently delivering on the promise of superior quality. This pairing offers a balance of maternal excellence and performance-driven traits. Whether you're looking for show ring success or herd improvement, don't miss this winning combination of proven genetics. **3 grade #1 embryos**

46_{a+b}

WL Lincoln (ET,D)

AHCA #65,715 • Red • 9/12/22

Windland Flats, Princeton, MN

SEMEN

Jock of Benmore UK6800

JOCK OF GLENGORM 18,549

Bheadreachd 2nd of Glengorm UK23451

GH Mr Chips (D) 45,568

GRAY OWL'S BRITTA (D) 55,429

JAR Britta 42,432

John of Ulva UK6180

Annag Ruadh 3rd of Benmore UK22162

Carn Maing of Scone Palace UK5858

Bheadreachd 6th of Braes of Gre UKHYA6019931

Trafalgar Nathan (D) 39,363

Glen Haven Andraena 39,990

Gray Owl's Britta is a highly sought after, well-muscled and has to be one of the most influential bulls in the breed. His sire, the legendary Jock of Glengorm, one of the most influential bulls in the breed whose semen is impossible to find. If you want tradition, matched with super growthy genetics, here's your next sire. Lincoln has won classes across the country, including Senior Bull Calf Champion (NCHCA/NWSS) and Champion and Reserve Champion Bull honors (Cheyenne/NE State Fair). 2024 AHCA National Show stats at 16 months old: 40 cm scrotal, 14.3 REA, 1,180 lbs. Nt821 negative. Learn more at windlandflats.com. **2 lots of 5 straws**

47_{a+b}

Howling Springs Natural Mystic (ET,PV,D)

AHCA #63,705 • Red • 1/1/22

Howling Springs Farm, Elverson, PA

SEMEN

STR Ruthless Game (AI, D) 53,128

STR REVOLUTION (PV,D) 55,898

STR Enchanted (ET,PV,D) 52,401

Scott of Craycombe (D) UK7557

YARNELLE FARMS BETULA (AI,D) 39,567

Swains Betula GBB 8B -6908- 24,803

Samhach Buidhe of Bairnsley (AU,AI,D) 49,802

Star Lake Victoria (D) 47,263

Karabin Farm's Tuffy (D) 42,152

Summit Ranch Shaelyn (AI,PV,D) 42,734

Philip 1st of Craycombe UK7232

Jehudith 1st of Craycombe UK29623

Gille Buidhe of Benmore CA3581

GOF Maya 7M CA3465

Natural Mystic exemplifies the qualities we prioritize in our breeding program. His pedigree is built on a foundation of proven, sound traits consistently demonstrated over the years. We admire his larger frame, which provides an impressive presence. His remarkable mobility ensures that he is not just visually striking but also highly functional. He's passed on his desirable traits to his offspring, including height, depth and structural integrity. We are confident that he will make a significant impact in shaping the next generation of superior cattle. Mystic is nt821 negative. Please visit our website howlingspringsfarm.com for pictures of offspring and updates. **2 lots of 5 straws**



48_{a+b}**STR Encore** (ET,PV,D)**AHCA #62,210 • Brindle • 5/4/20**

Spears Farms, Brentwood, CA

SEXED HEIFER SEMEN

Samhach Buidhe of Bairsley (AU,AI,D) 49,802
STR RUTHLESS GAME (AI,D) 53,128
 Star Lake Victoria (D) 47,263

Karabin Farm's Tuffy (D) 42,152
STR ENCHANTED (ET,PV,D) 52,401
 Summit Ranch Shaelyn (AI,PV,D) 42,734

Rushmore Bracken UKGRC907582
 Isobaile of Cruachan AU4167

GH Due Diligence (D) 42,337
 Star Lake Maggie 43,211
 E Z Acres Nathaniel 26,710
 Fraser Lane's Jellybean -11241- 34,894

Ruger of Mapleview (AI,D) 26,594
 Summit Ranch Jocelyn (AI,D) 33,236

Encore is a copy-paste kind of bull with functionality for any cow herd. He's built right from his big-footed foundation to a huge top and backdrop photo front end. Encore was THE 2023 NWSS National Champion Bull, with a lineage of champion genetics that will keep you pulling purple banners for years to come. He's a no-joke beef bull with an 18.3 REA, puppy dog gentle, and an absolute dude in whatever breed or color you want to produce. He is utterly unique and studs like this move the breed forward. Eligible for Canadian export. **2 lots of 5 heifer sexed straws**

**49_{a+b}****Snowland Olaf** (D)**AHCA #61,612 • Silver • 4/9/20**

Sheppard Farm on Apple Hill, Hanover, PA

SEMEN

Skye High Wayward Son (ET,PV,D) 48,809
FTA KANSAS (D) 56,338
 FTA Victoria's Secret 45,809

CBS Gradee (D) 51,525
SNOWLAND G. CAROLYN 54,715
 Snowland Doodle Ev 48,763

Ben Eniglair of Scone Palace (D) 15,745
 GOF Claudette 9C -7598- (D) 29,233

CID's Claymore (D) 37,726
 Eagle Creek Victoria (AI) 28,799
 LEA Denovan Adam (D) 46,396
 CC Independence 37,762

LEA Broderick (D) 42,979
 We Tired Snickerdoodles 44,322

Olaf is a wonderfully consistent bull, finishing his second year at Sheppard Farm. Son of FTA Kansas and Snowland G. Carolyn, Olaf's calves offer traditional attributes of medium height, thick body and strong topline and are second only to his outstanding workability and disposition which he passes to his offspring. Olaf's calves have been exceptionally consistent across our 10 matrilineal families with calving weights at 58 lbs, wonderful calf vigor, and carrying their sire's stocky stature and incredible attitude. They are 65% dun and 33% silver, giving you a great opportunity for specific color selection while not sacrificing traditional Highland attributes. **2 lots of 5 straws**

**50_{a+b}****Philip of Glengorm** (D)**AHCA #64,533 • Red • 2/23/20**

Highland Genetics LLC, Princeton, MN

SEMEN

Charles of Richmondhill UK0004
PHILIP OF RICHMONDHILL UK0125
 Heather of Richmondhill UK0033

Craigowl 7th of Glamis Castle UK3195
SHEILA MOR 12TH OF GLENGORM UK0879
 Sheila Mor 10th of Glengorm UK0509

Stuart of Lagg UK0079
 Banarach of Cnoc UK0011

Tearlach of Callachally UK0154
 Connachat of Richmondhill UK0003
 Douglas of Roisbheinn UK0015
 Baravalla Uasail of Deanbank UK0345
 Eoin Mhor of Torloisk UK0039
 Sheila Mor 6th of Glengorm UK0327

Imported from Glengorm Castle on the Isle of Mull, this rugged bull was made to add style to American Highlands. We absolutely love his calves. His calves have excellent feet and legs with great hip sets. He adds depth and dimension. Philip has created a stamp of compact, muscled, well-balanced cattle that thrive. Compared to our experience with other direct Scottish genetics, Philips calves are super growthy and have been some of the biggest, fastest growing calves in the pasture this year. Calves have had small birth weights. Nt821 negative. Learn more at highlandgenetics.com. **2 lots of 5 straws**



51_{a+b}**STR Optimus Prime** (AI,D)**AHCA #53,739 • Red • 3/17/14**

Seawind Meadows, LLC, Dennis, MA

SEMEN

Iain Mor of Glenquoich CA4567

GUSGURLACH OF WINDRUSH -6015- (D) 34,685

Shelterwood Sally Windrush CA4154

Storm of Glenquoich UK7007

Monica 8th of Glenquoich UK26453

Gille Buidhe of Benmore CA3581

GOF Kirsch 2K CA3154

MacDonald of Esk 18,546

Whippoorwill Acres Carmel 29,829

Twinflower MacDonald (AI) 33,009

STAR LAKE AMBER 43,213

Star Lake Blackberry 36,750

Alex of Elliot -6230- 33,251

BVM Blackbeary 26,569

Seawind Meadows proudly offers STR Optimus Prime semen, their prior herd sire. A dark red brindle proven bull with the traditional deep, moderate, muscular frame. Optimus finished his show career as 2016 NWSS Reserve Grand Champion Bull. Sired by pedigree enthusiasts' Gusgurlach of Windrush, his lineage also includes Gille Buidhe of Benmore and MacDonald of Esk. Optimus' genetics run dominantly through Seawind's herd, consistently producing cookie cutter calves. Truly docile, he produced youth showmanship animals for Seawind, along with breeding show champs including Multi-AOB Champion SWM Clodia, SWM Sarah's Song, SWM Prime Time and SWM Swipe Right. Nt821 negative. Semen stored at Vogler Semen Centre, Inc., Ashland, NE. **2 lots of 5 straws**

**52_{a+b}****Windemere Hotshot** (AI,PV,D)**AHCA #60,477 • Yellow • 9/3/19**

Windemere Farm, Junction City, WI

SEXED HEIFER SEMEN

STR Ruthless Game (AI,D) 53,128

STR REVOLUTION (PV,D) 55,898

STR Enchanted (ET,PV,D) 52,401

Samhach Buidhe of Bainsley (AU,AI,D) 49,802

Star Lake Victoria (D) 47,263

Karabin Farm's Tuffy (D) 42,152

Summit Ranch Shaelyn (AI,PV,D) 42,734

Jock of Glengorm 18,549

Diana of Kiyiwana (D) 26,131

Summit Ranch Ugo (ET,D) 45,532

DH UGO MAGIC (D) 52,586

DH Spring Magic II 49,144

GH Mr Dickens (ET,PV,D) 45,607

DH Spring Magic 44,542

With an eye-catching profile, good temperament and muscling to put pounds on carcasses and wow judges, Hotshot heifers will be a valuable addition to your herd! His dam was a deep bodied cow with an excellent udder, strong feet & legs and correct conformation with a pedigree going back to the legendary mating of Gusgurlach of Windrush and Diana of Kiyiwana. His paternal line includes the 3-time National Champion STR Enchanted and STR Ruthless Game. Hotshot's calves have been structurally correct with overall balance, quiet temperaments and eye appeal. Nt821 negative. **CSS certified heifer-sexed semen. 2 lots of 5 straws**

**53****Highland Spice Hickory** (D)**AHCA #59,533 • Black • 4/8/19**

Highland Spice, Buffalo, WY

SEXED HEIFER SEMEN

Uallach Dubh 6th of Pollok (D) UKNEP080335

LEGEND OF CATHACH HERITAGE 15C -16727- 58,385

M'Lady of Latheron Heritage CA12705

Uallach Dubh 4th of Pollok UKNEP060235

Siusan Ruadh 45th of Pollok UKNEP040188

Windlough Prince Charles 1C CA7497

Lady Fogo 2nd of Windlough J8 CA11030

Ledyard's Talisker (D) 42,532

Sorcha's Sonasag 42,264

Sorcha's Santiago 1X (D) 49,541

CBS ROSANNA 54,777

KJH Roxann 40,515

Highland Spice Saffron (D) 29,130

Trafalgar Watchful 22,245

Not just a National Grand Champion Bull, but one whose progeny have won about everything. Our Hickory calves tend to be smart at birth (average BW 70 lbs), gentle, moderate with good feet and legs and loaded with breed character. When he won here in 2022, he was 1743 lbs with a ribeye area of 19.74, over a square inch larger than the much heavier Reserve Champion Bull. Whether you are looking for highly heritable beef characteristics, to make show cattle or to just make good females, Hickory is a smart choice. Nt821 negative. **Five 1/4 cc, 4M concentration heifer-sex-sorted straws.**



54_{a+b}***Holy Cross Black Jack*** (PV,D)**AHCA #58,135 • Black • 3/24/18**

Trinity Farms, LTD, Greeley, CO & Heather Valley Cattle Co, Laramie, WY

SEMEN

CBS Yaz's Yukon Jack (D) 51,519

TRAFALGAR DIMITRI 15 (ET,PV,D) 55,086

EZ Acres Pauline (PV,D) 42,998

HSC Rebel's Jack (D) 49,345

Cobblestones Yazmine 49,210

Trafalgar Luther (D) 37,040

EZ Acres Mircle (D) 37,874

DH Raeford (ET,PV,D) 40,955

Bean Falls Millie (D) 40,877

ST Gunsmoke (D) 47,008

HOLY CROSS BELLA (D) 49,428

Double LL Elle 06 44,202

DH MacIntosh 8H (D) 32,750

Highland View Addie 31,566

Black Jack is solid from the ground up. Excellent hoof and leg structure. Wide topped and smoothly built. Spent his summers on 2500 acres servicing cows at 9,000' elevation, unchallenged. A disposition of a gentleman on 2500 acres or 1 acre. Easy to handle. His heifers have been cream of the crop. Very pretty in their design, deep bodied and wide topped. Bannered at all shows attended. This is your opportunity for a winning hand. **2 lots of 5 straws**



Pearl's Pics

55_{a+b}***Finley Falls Duncan*** (D)**AHCA #54,601 • Dun • 1/9/15**

Trinity Farms, LTD, Greeley, CO

SEMEN

DH Montgomery (AI,D) 27,923

LEA BECKET (D) 42,976

LEA In Vogue 36,296

DH White Gold -6654- 20,747

Drover Hill's Lear-Ghath 16,395

LEA Raleigh (D) 31,862

LEA Laurel 22,702

GCR Pompey (D) 38,486

Pimushe Tabitha 38,975

Flatheads Glen Moray (D) 45,515

LEA FAYE (D) 48,224

LEA Corrie 44,221

Owl Rock Xyris (D) 34,728

LEA Kittery 21,778

A deep bodied, structurally correct bull presenting an exceptional hoof and stout leg. Duncan packs a frame of natural muscling with a fluid ease of motion. His silver dam's sire, the LEA first herd sire, GOF Ralph 21R, demonstrated tremendous growth on grass and daughters who had improved udder qualities and milk production. Duncan's paternal lineage is full of natural made power and superior genetic docility. This combination of genetic influence has produced feed efficient, deep sided, easy fleshing, very functional cattle. Gentle dispositions shine through this pedigree. Undeclared show career, this multi-national champion will increase productivity in your herd. **2 lots of 5 straws**

Finley Falls
Duncan
Progeny**56_{a+b}*****Samhach Buidhe of Bairnsley*** (AU,AI,D)**AHCA #49,802 • Yellow • 8/12/06**

Bairnsley Highland Cattle, Victoria, Australia

SEMEN

Wallace of Achnaich UKNEA867199

RUSHMORE BRACKEN UKGRC907582

Fleur of Windsworth UKDWW8631185

Prionnsa 4th of Leys UK6792

Cualean 56th of Achnaich UKNEA74AJ16

Rory Ruadh 3rd of Hungerhill UKMPH837069

Fraoch of Pollok UKNEP7726432

Trafalgar Benedict 24,228

Moineag of Treilissick NZ640

Tearlach of Cruachan (ET) AU2612

ISOBALE OF CRUACHAN AU4167

Peigi of Cruachan (ET) AU3421

GOF Xerxes 2X CA5191

Croftgrass Marna VIII CA4834

Sammy is a rare combination in the Highland World - good feet, growth, frame and correctness. He has a magnificent topline and stands with a post at each corner with plenty of width, a natural show animal. He is as close to faultless as we will likely ever breed. Style and presence, with the added bonus of extreme docility and great udders in his progeny. Sammy's pedigree gives access to the Scottish bull, Rushmore Bracken, winner of Champion Bull at the 1991 & 1999 Royal Highland Show in Scotland. Bracken sold for US\$30,000 32 years ago at the Oban Sale. Semen stored at Reproduction Specialty Group, Lebanon, MO. **2 lots of 5 straws**



WAYNE JENKINS

57_{a+b}***JBK Nate* (D)****AHCA #39,819 • Black • 5/14/03**
Highland Cattle Foundation, Brighton, CO
SEMENGOF Chieftain 17C -7871- 30,237
THORBARDIN'S GANDOLF (D) 30,569
Cape St. Mary's Melinda (D) 25,076GOF Zaphod 1Z CA5830
GOF Rosered 20R CA3999Craigievars Ruadh Gregory -4661- 19,915
Cape St. Mary's Mariane 19,211

Domino of Tulach Ard (D) 24,434

THORBARDIN'S JUNIPER (D) 36,208

WWF 91-Fe Geal Cailey 88 23,331

CJ Domhnall 286 18,984
Lady Holly of Padilla 15,579Padraic O'Leary 20,244
FE Geal Caileag 88 19,613

A functional, structurally correct, stylish black son of Thorbardin Gandolf. He was collected and utilized as a calving ease sire for composite breeding. His pedigree is maternal made with the added bonus of soundness and outstanding udder quality. He's a bull that would give diversity in genetics. Nt821 negative. Fair market value is \$30/straw. Purchase price in excess of FMV is tax deductible as permitted by law. **2 lots of 5 straws**

**Sire of Lot 57****58_{a+b}*****GOF Xerxes 2X* (CA,D)****AHCA #22,725 • Red • 4/19/88**
Highland Cattle Foundation, Brighton, CO
SEMENCovenant Scott 3S CA4060
COVENANT ULYSSES 62U CA4634
Covenant Robin 2R CA3913GOF Pride 16P CA3821
GOF Kimberley CA3178GOF Marshall 16M CA3636
Emerlen Genevieve CA2717
Hamish of Norgrove 14260 CA2927
Royal Galaxy Tish 8,985

Royal El Negro of Albeni CA3786

SANDRA OF NORGROVE CA4202

Gruagach CA2788

Lurrach 2nd CA2240
Blarag CA1711

Dual registered in the US and Canada, Xerxes originated from performance-oriented Glen Osprey Farm. This bull, like many GOF cattle, was larger framed with great carcass quality. He shared good feet and legs and a delightful temperament with his herd mates. An outcross pedigree with several generations packed with Canadian bred and raised cattle. Trafalgar Benedict was a son that was utilized in Australia to add frame and size to cattle. Nt821 negative. Fair market value is \$30/straw. Purchase price in excess of FMV is tax deductible as permitted by law. **2 lots of 5 straws**

59***Ben Eniglair of Scone Palace* (UK,D)****AHCA #15,745 • Red • 3/2/80**
Highland Cattle Foundation, Brighton, CO
SEMEN

Tearlach of Creagan UK5891

GILLE RUADH OF GLENFORSA UK6359

Mairi Ruadh 7th of Killundine UK19846

Gille Coir 2nd of Scone Palace UK5602
Maighdean Ruadh 7 of Barbreck UK17262Rob Ruadh of Corryarrick UK4941
Mairi Ruadh 3rd of Killundine UK15183

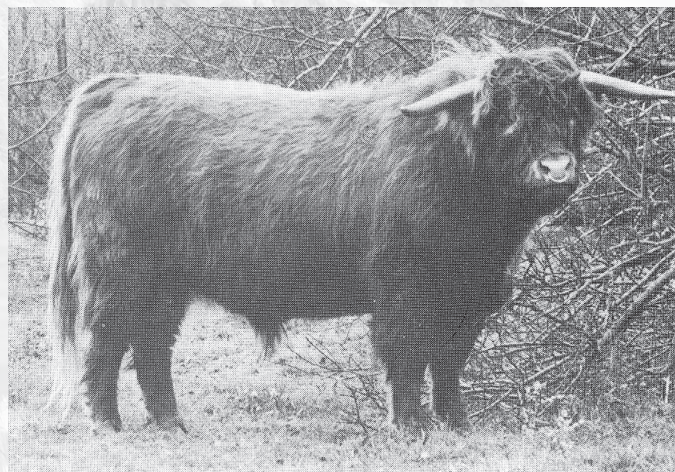
Uallach 4th Ile UK5426

ELLA RUADH 6TH OF SCONE PALACE UK24862

Ella Ruadh 3rd of Scone Palace UK23141

Fear Tagraidh Ile 2nd UK4791
Capleadh 11th UK13207Ben Alder of Scone Palace UK5988
Ella Dubh of Smaull UK21035

Very rare 100% Scottish semen, as the HCF has only a few straws left! There is not much left on the open private market either. Excellent opportunity! Ben was a smooth, stout, heavy muscled bull. He was imported in the early 1980s by Dan Flynn of Dirlane Farm. Sire of the 2011 National Western Grand Champion Bull and grandsire to the 2013 Grand Champion Bull and Reserve Grand Champion Female. Fair market value and reserve is \$300/straw. Purchase price in excess of FMV is tax deductible as permitted by law. **1 lot of 3 straws**

*Highland Cattle
Foundation*

In 2002, the Highland Cattle Foundation was established as a Section 501(c)(3) corporation.

The goals of the Foundation are providing scholarships to junior AHCA members, preserving Highland genetics, supporting educational projects and making selected research grants.

AHCA
Historic City Hall
22 S. 4th Ave., Ste. 201
Brighton, CO 80601-2042

Non-Profit Org.
U.S. Postage

PAID
Permit #764
Lubbock, TX

National Western Highland Schedule of Events

THURSDAY, JANUARY 23

10:00 AM	Sovereign Heifers & Market Show, National Junior Show and Jackpot Group Classes
3:00 PM	AHCAj Cattle Judging Contest
5:00 PM-7:00 PM	Highland Hangout Social

FRIDAY, JANUARY 24

8:00 AM	36th Annual National Show
---------	---------------------------

SATURDAY, JANUARY 25

9:00 AM	Meet & Greet Sale Preview
10:00 AM	36th Annual National Sale "Performance Genetics with Style"
6:00 PM	Cocktail Reception
7:00 PM	Awards Banquet



Bid Live Online

www.CCI.live - Watch the Sale

(405) 400-9505 Text/Call - schedule@cci.live
Find us on the App Store and Google Play
Over 35 years in livestock marketing!

**Schedule Details
Terms and Conditions
Updates**

Scan Here >

