



GARDEN FURNITURE COLLECTIONS  
PEPE GARDEN FURNITURE

SPRING - SUMMER 2025

[PEPEGARDEN.CO.UK](http://PEPEGARDEN.CO.UK)



Margot 127 round table  
with Elli Flip-leg chairs.

## PEPE GARDEN FURNITURE

Established in 1988, Pepe has been supplying quality wooden furniture for homes gardens, and public spaces for over a third of a century. Our products are constructed from pressure-treated scandinavian redwood (*Pinus Sylvestris*). It is a testament to the durability of the timber, and to the construction techniques, that many of our original pieces continue in use, across the generations.

For over thirty years our garden furniture products have been sold at garden shows, such as the RHS *Chelsea Flower Show*, and home living exhibitions. It is always a delight for us to be able demonstrate the quality of our product at first hand. We are also preferred suppliers to a number of organisations such as *BUPA Carehomes*, as well as selling directly to hotels, pubs and membership clubs.

In recent years, our business model has evolved to the point that today the bulk of our sales take place after our furniture is viewed on our website; supported by our e-newsletter mailings, and our social media accounts. Over 20% of our sales are to existing customers. We are proud to maintain an overall five star review rating \* for both product quality and customer service. Be assured you can still talk to us on the telephone!

To complement our online store, and our selling at garden shows, we are about to launch a number of permanent show-sites at garden centres throughout the country - seeing is believing! This in addition to our own showroom near Totnes, in South Devon.

We don't believe in 'green-washing', but it is fair to say that we take the impact our activities have on the environment seriously. As well our ensuring our timber is sustainability sourced - through membership of the *PEFC Scheme \*\**, we are currently undergoing an audit process whereupon Pepe will become a *Certified B Corporation*, recognised for high standards of social and environmental impact. We also plant a tree for every product sold!

\* *Trustpilot - 4.8/5 Dec 2024, some products may vary.*

\*\* *License PEFC/16-37-013 | Promoting Sustainable Forest Management | Chain of Custody BMT-PEFC-COC-0020 | 70% PEFC Certified.*



### ABOUT THIS CATALOGUE

Available in print, pdf and online viewer, the catalogue is a 'no-frills' listing of our garden furniture, and associated products.

Current prices are on a separate price-sheet, and on our website, along with further images, customer reviews and other useful info such as delivery information, T&Cs etc.

The hyperlinks and QR codes take you to the relevant collection on [pepegarden.co.uk](https://pepegarden.co.uk)

### SEE IN YOUR SPACE

The *See in Your Space* QR Codes enable you to render the products as augmented reality into your own garden or outdoor area. For this you will need a smart mobile phone with a camera. Enjoy!



## CONTENTS

- PEPE GARDEN FURNITURE [3](#)
- GARDEN SWINGS [6](#)
- SUNBEDS AND RECLINERS [16](#)
- PARK, GARDEN AND PICNIC BENCHES [24](#)
- GARDEN CHAIRS [32](#)
- DINING TABLES [48](#)
- SMALL OCCASIONAL TABLES [62](#)
- CUSHIONS, CANOPIES, MATTRESSES [68](#)
- CARE and MAINTENANCE [88](#)



GARDEN SWINGS



## PEPE GARDEN SWINGS

We have been refining the design of our swings over thirty years with small improvements to make them just right. Many happy customers talk to us, at shows, of how their original garden swing is still in use after decades of use, or how it has passed down through the family.

The wooden parts are from pressure treated Scandinavian redwood, with chains and fittings in stainless steel. The precise angle at which the swing hangs can be adjusted by using a different swing link at the fulcrum.

The canopy and frame is sold separately, as are the cushions. The canopy fabric (available in four colours) is a mesh material that provides a good amount of dappled shade, while not retaining water.

There is an option to buy a high-back extension piece with cushions to fit. Also available as an option is a footrest.

The swings are intended to stay in position outdoors throughout the year. The cushion fabric does not fade and the filling allows rainwater to pass through, although no doubt you will not plan for them to get routinely soaked.

A coat of our furniture protector, every couple of years, keeps the wood in good looking good ( See Care and Maintenance) . We do offer a cover, with a zippable panel at the front so you can sit on the swing in winter with the cover on.

The seat alone, with chains is also for sale together, should you have a suitable porch or tree from which to hang it.

Our swings typically take about 20 minutes to assemble, using the guide provided. We also have video instructions available. They are guaranteed for ten years with spare parts available indefinitely.

## TERASSI 3 SEAT SWING

Product Code: PE-TER001

### Dimensions:

- Chair Width: 187 cm
- Seat Depth: 40 cm
- Back Rest Height: 56 cm
- Overall Depth: 145 cm
- Overall Width: 278 cm
- Overall Height: 183 cm
- Site Area Required: 278 cm x 145 cm

[Cushions are available](#)

### Construction:

Pressure-treated Scandinavian redwood (sustainably sourced with PEFC chain of custody) with stainless steel chains and fittings.



zoom and rotate the image  
above and See In Your Space.



[Website link](#) for  
ordering and price.



## TERASSI 3 SEAT SWING ONLY

### Product Codes:

PE-TER002: - with 2.45 metre chains

PE-TER006: - with 4 metre chains

Note that we can supply chains of any length.

### Dimensions:

- Chair Width: 187 cm
- Seat Depth: 40 cm
- Back Rest Height: 56 cm

### Construction:

Pressure-treated Scandinavian redwood (sustainably sourced with PEFC chain of custody) with stainless steel chains.



[Website link](#) for ordering and price.

## LILLI 2 SEAT SWING

Product Code: PE-LIL001:

### Dimensions:

- Seat Width: 120 cm
- Seat Depth: 40 cm
- Back Rest Height: 56 cm
- Overall Depth: 129 cm
- Overall Width: 216 cm
- Overall Height: 165 cm
- Site Area Required: 216 cm x 129 cm

[Cushions are Available](#)

### Construction:

Pressure-treated Scandinavian redwood (sustainably sourced with PEFC chain of custody) with stainless steel chains and fittings.



zoom and rotate the image  
above and See In Your Space.



[Website link](#) for  
ordering and price.

## LILLI 2 SEAT SWING ONLY

### Product Codes:

PE-LIL002: Lilli Swing Seat Only 2 Metre Chains

PE-LIL006: Lilli Swing Seat Only 4 Metre Chains

Note that we can supply chains of any length.

### Dimensions:

- Seat Width: 120 cm
- Seat Width including U-bolts: 140 cm
- Seat Depth: 40 cm
- Back Rest Height: 56 cm

### Construction:

Pressure-treated Scandinavian redwood (sustainably sourced with PEFC chain of custody) with stainless steel chains.



[Website link](#) for  
ordering and price.

## HIGH BACK OPTION FOR LILLI & TERASSI SWINGS

Product Codes:

PE-LIL004: Lilli Swing High Back Option

PE-TER004: Terassi Swing High Back Option

Dimensions:

- Height 33 cm
- Lilli Length 122 cm, Terassi Length 183 cm

[Lilli High Back Cushion](#) | [Terassi High Back Cushion](#)

The high back option for the *Lilli* and *Terassi* Swings extends the back support section of the seat to a height that you can rest your head. Easily attachable, this piece extends the whole width of the seat.



[Website link](#) for  
ordering and price.

## FOOTREST OPTION FOR LILLI & TERASSI SWINGS

Product Codes:

PE-LIL005 or PE-TER005 Swing Footrest  
(Two codes one product, use either)

Dimensions:

- Width: 52 cm
- Depth 48 cm

The footrest for the *Lilli* or *Terassi* Swing, extends the seat section from the front out further so that you are able to rest your lower legs adding that extra touch of luxury to your swinging experience.

Designed to hook onto your Pepe swing seat, the footrest is easily movable and can be attached to either side of your swing and removed when not in use without additional fittings.



[Website link](#) for  
ordering and price.

## CANOPY FRAME AND MESH CANOPY OPTION FOR TERASSI AND LILLI SWINGS

### Product Codes:

PE-LIL003: Lilli Swing Canopy Frame and Canopy:

PE-LIL003-SGM: Green

PE-LIL003-NBM: Navy Blue

PE-LIL003-NTM: Natural

PE-LIL003-BLM: Black

PE-TER003: Terassi Swing Canopy Frame and Canopy:

PE-TER003-SGM: Green

PE-TER003-NBM: Navy Blue

PE-TER003-NTM: Natural

PE-TER003-BLM: Black

Replacement canopies and frames are also available separately.

### Dimensions:

- Length : 224 cm (Terassi) 160 cm (Lilli)
- Width 129 cm ( Terassi) 119 (Lilli)

### Construction

The canopy mesh



Lilli  
[Website link](#) for  
ordering and prices.



Terassi  
[Website link](#) for  
ordering and prices.





SUNBEDS AND RECLINERS





## PEPE SUNBEDS AND RECLINERS

Whenever we take our *Rowena Rocking Sundeds* to a show they are usually the centre of attention. They are pictured here without cushions, but with the mattresses in place they are everybody's first choice to try out. As well as rocking gently, with the chocks supplied they can be set to remain in an upright position with the obvious benefit of not spilling your refreshments (not supplied). The mattresses make all the difference of course and these are available in a range of colours: see *Cushions Canopies and Mattresses*.

For those of us whose rocking days are behind us, we offer our *Nojata* sunbed - a traditional sunbed with wheels at one end, and a mini drinks shelf attached.

Our *XL Stella Recliner* is also a feature piece, with a story behind it. We were asked to develop a sunbed where two can sit opposite each other so that they may use signing hand-movements to communicate. And so the *Stella* was born. It also works well for newly-weds as well as big people.

Finally, our extravagant *Serena Swinging Daybed* - suitable for when the whole family want to recline together, or for when you want to sleep under the stars.

As with our other items, the wooden parts are made from pressure-treated Scandinavian redwood, with traditional jointing methods. The chains and fittings are in stainless steel.

A coat of our furniture protector, every couple of years, keeps the wood in good looking good - see *Care and Maintenance*. All the wooden items can remain outdoors throughout the year however we do offer covers for most items.

All items require a degree of self-assembly, using the guides provided. We also have video instructions available. They are guaranteed for ten years with spare parts available indefinitely.

## ROWENA ROCKING SUNBED (SINGLE)

Product Code: PE-ROW001

### Dimensions:

- Chair Width: 60 cm
- Seat Depth: 90 cm
- Seat Height From Ground: 16 cm
- Back Rest Height: 95 cm
- Overall Depth: 162 cm
- Overall Width: 60 cm
- Overall Height: 85 cm

[Cushions are available](#)

### Construction:

Pressure-treated Scandinavian redwood (sustainably sourced with PEFC chain of custody) . Traditional jointing



zoom and rotate the image  
above and See In Your Space.



[Website link](#) for  
ordering and price.

## ROWENA ROCKING SUNBED (DOUBLE)

Product Code: PE-ROW002

Dimensions:

- Seat Depth: 90 cm
- Seat Height From Ground: 16 cm
- Back Rest Height: 95 cm
- Overall Depth: 162 cm
- Overall Width: 120 cm
- Overall Height: 85 cm Chair Width: 187 cm
- Seat Depth: 40 cm
- Back Rest Height: 56 cm

[Cushions are available](#)

Construction:

Pressure-treated Scandinavian redwood (sustainably sourced with PEFC chain of custody). Traditional jointing methods.



zoom and rotate the image  
above and See In Your Space.



[Website link](#) for  
ordering and price.

## STELLA BENCH RECLINER

Product Code: PE-STE001

### Dimensions:

- Chair Width: 126cm
- Seat Depth: 70cm
- Seat Height from Ground: 45cm
- Seat Back Height: 80cm
- Site Area Required 280cm x 70cm

[Cushions are available](#)

### Construction:

Pressure-treated Scandinavian redwood (sustainably sourced with PEFC chain of custody) . Traditional jointing methods.



[Website link](#) for ordering and price.

## NOJATA SUNBED

Product Code: PE-NOJ001

Dimensions:

- Chair Width: 64 cm
- Seat Depth: 120 cm
- Seat Height From Ground: 23 cm
- Back Rest Height: 62 cm
- Overall Depth: 205 cm
- Overall Width: 90 cm (including shelf)v
- Overall Height: 73 cm

[Cushions are available](#)

Construction:

Pressure-treated Scandinavian redwood (sustainably sourced with PEFC chain of custody). Traditional jointing methods.



[Website link](#) for ordering and price.

## SERENA SWINGING DOUBLE DAY-BED

Product Code: PE-SER001

### Dimensions:

- CFrame height: 176 cm
- Bed Width: 120 cm
- Bed Length: 210 cm
- Site area required: 152 cm x 265 cm

### [Mattress available](#)

The Serena Double Day bed is an impressive statement piece of outdoor furniture.

The ultimate in relaxation, our day bed is perfect for unwinding and enjoying the sun on those warm summer days or a cosy up under the night sky.

*Optional extras include a fixed canopy, a full double*



[Website link](#) for ordering and price.





PARK, GARDEN AND PICNIC  
BENCHES





## PARK, GARDEN AND PICNIC BENCHES

Our Park, Garden and Picnic Benches are the real deal when it comes to sturdy all weather seating that is made to last. These pieces sit well in parks and gardens including outdoor eating areas in pubs, clubs and hotels.

The *Erica* park bench is of a timeless traditional design and is often purchased as a memorial piece in memory of a loved one.

The *Karen 8 Seat Circular* and *Nicola Rectangular* picnic benches are good for, well, picnics, - what more can you say about a picnic bench!.

The *Villa Sofa Benches* are more garden style and come in widths suitable to seat two or three. The two-seat version has a flip-leg (similar to our *Elli chairs*) .

These pieces are all from Scandinavian redwood, slow grown timber with natural resistance to rot, even before it is pressure-treated, which, happily it has been. This is the wood that was traditionally used for masts and spars. You can expect it to last for many years.

## VILLA TWO SEAT SOFA BENCH

Product Code: PE-VIL001

### Dimensions:

- Chair Width: 120 cm
- Seat Depth: 43 cm
- Seat Height From Ground: 40 cm
- Back Rest Height: 45 cm
- Overall Depth: 70 cm
- Overall Width: 130 cm
- Overall Height: 97 cm

### Construction:

Pressure-treated Scandinavian redwood (sustainably sourced with PEFC chain of custody) . Traditional jointing methods.



The rear legs are able to flip under to recline the seat as shown in the picture, left.



[Website link](#) for ordering and price.

## VILLA THREE SEAT SOFA BENCH

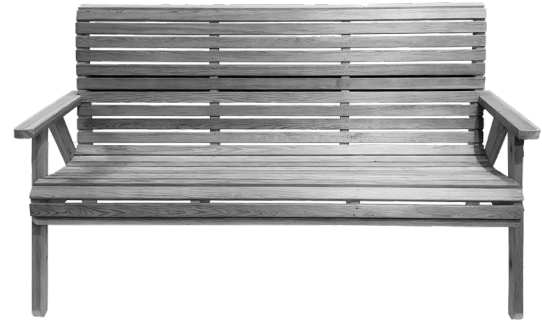
Product Code: PE-VIL002

### Dimensions:

- Chair Width: 64 cm
- Seat Depth: 120 cm
- Seat Height From Ground: 23 cm
- Back Rest Height: 62 cm
- Overall Depth: 205 cm
- Overall Width: 90 cm (including shelf)v
- Overall Height: 73 cm

### Construction:

Pressure-treated Scandinavian redwood (sustainably sourced with PEFC chain of custody). Traditional jointing methods.



[Website link](#) for  
ordering and price.

## KAREN CIRCULAR 8 SEAT PICNIC BENCH

Product Code:



## NICOLA RECTANGULAR PICNIC BENCH

Product Code:

Dimensions:

- C  
Construction:

Pressure-treated Scandinavian redwood (sustainably sourced with PEFC chain of custody). Traditional jointing methods.



## ERICA PARK BENCH

Product Code: PE-ERI001

Dimensions:

- Chair Width: 140 cm
- Seat Depth: 54 cm
- Seat Height From Ground: 52 cm
- Back Rest Height: 56 cm
- Overall Depth: 70 cm
- Overall Width: 155 cm
- Overall Height: 95 cm

Construction:

Pressure-treated Scandinavian redwood (sustainably sourced with PEFC chain of custody) . Traditional jointing methods.



zoom and rotate the image  
above and See In Your Space.



[Website link](#) for  
ordering and price.





GARDEN CHAIRS





## GARDEN CHAIRS

For relaxing outdoors nothing beats our *Adirondack* style garden chair. Its big and well constructed, although not invented here of course - the design, by Thomas Lee, comes from the early 20th Century in the Adirondack hills of Massachusetts. However, the rocking Adirondack variant, is very much a Pepe design following our *Comfort in Motion* theme that is prevalent in many of the Pepe designs.

We have rocking chairs of course - our *Riku* rockers including a double-seat version.

Then follows the stylish Viking Chair, a great chair to carry around to your favourite spot - the two parts slide together easily and dis-assemble for stacking. Our other stacking chair is the Tami folding chair, which matches with our Tami folding table.

To match with our range of dining tables, but for many other purposes as well, our *Elli* chair range provides a host of options and extras, including a flip-legs, to set the chair to two positions, plus steamer attachments (foot-rests) , and joining bridges.

For all of our chairs, the wooden parts are made from pressure-treated Scandinavian redwood, with traditional jointing methods. The fittings are of galvanised or stainless steel.

A coat of our furniture protector, every couple of years, keeps the wood in good looking good - see *Care and Maintenance*. All our chairs can remain outdoors throughout the year however we do offer covers for most items.

All items require a degree of self-assembly, using the guides provided. We also have video instructions available. They are guaranteed for ten years with spare parts available indefinitely.

## ADIRONDACK CHAIR

Product Code: PE-ADI001

Dimensions:

- Seat Width: 55 cm
- Seat Depth: 53 cm
- Seat Height From Ground: 34 cm
- Back Rest Height: 86 c
- Overall Depth: 95 cm
- Overall Width: 83 cm
- Overall Height: 102 cm

[Cushions are available](#)

Construction:

Pressure-treated Scandinavian redwood (sustainably sourced with PEFC chain of custody) with traditional jointing methods and galvanised bolts.



zoom and rotate the image  
above and See In Your Space.



[Website link](#) for  
ordering and price.

## ADIRONDACK ROCKING CHAIR

Product Code: PE-ADI002

Dimensions:

- Seat Width: 55 cm
- Seat Depth: 53 cm
- Seat Height From Ground: 34 cm
- Back Rest Height: 86 cm
- Overall Depth: 95 cm
- Overall Width: 83 cm
- Overall Height: 102 cm

[Cushions are available](#)

Construction:

Pressure-treated Scandinavian redwood (sustainably sourced with PEFC chain of custody) with traditional jointing methods and galvanised bolts.



zoom and rotate the image  
above and See In Your Space.



[Website link](#) for  
ordering and price.

## ADIRONDACK SHELF

Product Code: PE-ADI004

### Dimensions:

- Width: 39 cm
- Length: 83 cm

### Construction:

Pressure-treated Scandinavian redwood (sustainably sourced with PEFC chain of custody)



[Website link](#) for  
ordering and price.

## ADIRONDACK FOOTREST

Product Code: PE-ADI003

### Dimensions:

- Width: 55 cm
- Depth: 50 cm

### Construction:

Pressure-treated Scandinavian redwood (sustainably sourced with PEFC chain of custody)



The footrest can be set in two positions - see facing page.



[Website link](#) for ordering and price.

## RIKU SINGLE ROCKER

Product Code: PE-RIK001

Dimensions:

- Chair Width: 52 cm
- Seat Depth: 40 cm
- Seat Height From Ground: 47 cm
- Back Rest Height: 85 cm
- Overall Depth: 100 cm
- Overall Width: 62 cm
- Overall Height: 112 cm
- Site Area Required: 62 cm x 100 cm Length: 83 cm

[Cushions available](#)

Construction:

Pressure-treated Scandinavian redwood (sustainably sourced with PEFC chain of custody) . Traditional jointing methods. Stainless steel and galvanized fittings.



zoom and rotate the image  
above and See In Your Space.



[Website link](#) for  
ordering and price.

## RIKU DOUBLE ROCKER

Product Code: PE-RIK002

Dimensions:

- Chair Width: 110 cm
- Seat Depth: 40 cm
- Seat Height From Ground: 47 cm
- Back Rest Height: 85 cm
- Overall Depth: 100 cm
- Overall Width: 120 cm
- Overall Height: 112 cm
- Site Area Required for Base: 120 cm x 100 cm

[Cushions are available](#)

Construction:

Pressure-treated Scandinavian redwood (sustainably sourced with PEFC chain of custody) . Traditional jointing methods. Stainless steel and galvanised fittings.



zoom and rotate the image  
above and See In Your Space.



[Website link](#) for  
ordering and price.

## VIKING CHAIR

Product Code: PE-VIK001

### Dimensions:

- Chair Width: 40 cm
- Seat Depth: 48 cm
- Seat Height From Ground: 45 cm
- Back Rest Height: 62 cm
- Overall Depth: 90 cm
- Overall Width: 40 cm
- Overall Height: 100 cm

### Construction:

Pressure-treated Scandinavian redwood (sustainably sourced with PEFC chain of custody) . Traditional jointing methods.



[Website link](#) for ordering and price.



## TAMI FOLDING CHAIR

Product Code::

Dimensions:

- C
- 

Construction:

Pressure-treated Scandinavian redwood (sustainably sourced with PEFC chain of custody) . Traditional jointing methods. Stainless steel and galvanised fittings.



## ELLI STATIC CHAIR

Product Code: PE-ELI001

### Dimensions:

- Chair Width: 61 cm
- Seat Depth: 40 cm
- Seat Height From Ground: 45 cm
- Back Rest Height: 56 cm
- Overall Depth: 70 cm
- Overall Width: 62 cm
- Overall Height: 95 cm

[Cushions are available.](#)

### Construction:

Pressure-treated Scandinavian redwood (sustainably sourced with PEFC chain of custody) with galvanised bolts..



Zoom and rotate the image above and See In Your Space.



[Website link](#) for ordering and price.

## ELLI CHAIR WITH FLIP LEG

Product Code: PE-ELI002

### Dimensions:

- Chair Width: 61 cm
- Seat Depth: 40 cm
- Seat Height From Ground: 45 cm
- Back Rest Height: 56 cm
- Overall Depth: 70 cm
- Overall Width: 62 cm

### Construction:

Pressure-treated Scandinavian redwood (sustainably sourced with PEFC chain of custody) with galvanised bolts.



The rear legs can be set to the reclined position, see left.  
[Cushions are available](#)



Zoom and rotate the image above and See In Your Space.



[Website link](#) for ordering and price.

## ELLI STEAMER ATTACHMENT

Product Code: PE-ELI004

Fits all Elli Chairs

### Dimensions:

- Width: 52 cm
- Depth: 49 cm

### Construction:

Pressure-treated Scandinavian redwood (sustainably sourced with PEFC chain of custody) with galvanised bolts..



[Website link](#) for ordering and price.

## ELLI CARITA BRIDGE PIECE

Product Code: PE-EL 005

Fits all Elli Chairs, but when bridging between two chairs, they should be of the same model.

Dimensions:

- Width: 70 cm
- Depth: 53 cm

Construction:

Pressure-treated Scandinavian redwood (sustainably sourced with PEFC chain of custody).



[Website link](#) for  
ordering and price.

## ELLI HIGH BACK CHAIR WITH FLIP LEG

Product Code: PE-ELI003

### Dimensions:

- Chair Width: 61 cm
- Seat Depth: 40 cm
- Seat Height From Ground: 45 cm
- Back Rest Height: 85 cm
- Overall Depth: 75 cm
- Overall Width: 62 cm
- Overall Height: 128 cm

### Construction:

Pressure-treated Scandinavian redwood (sustainably sourced with PEFC chain of custody) with galvanised bolts..



Zoom and rotate the image above and See In Your Space.



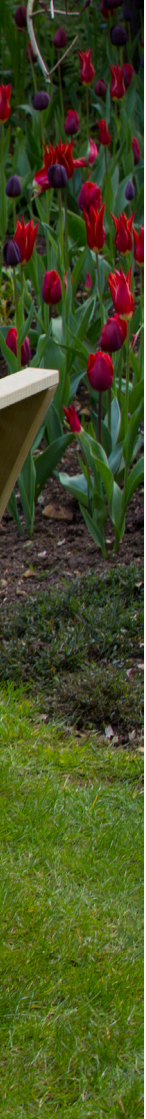
[Website link](#) for ordering and price.





DINING TABLES





## DINING TABLES

Al fresco dining is part of the joy of the warmer months, enjoying the outdoors, with family and friends, in the special spaces that you have cultivated or created. For outdoor dining we offer the *Amelia* range of square and rectangular tables, the *Margot* range of round tables that includes our two person *Sunshine* table, and, for the high seat dining experience, the *Birgitta* Bistro set. With the exception of the Bistro set, all pieces have a hole for a parasol pole.

For all of our dining tables, the wooden parts are made from pressure-treated Scandinavian redwood, with traditional jointing methods. The fittings are of galvanised steel.

A coat of our furniture protector, every couple of years, keeps the wood in good looking good - see *Care and Maintenance*. All our chairs can remain outdoors throughout the year however we do offer covers for most items.

All items require a degree of self-assembly, using the guides provided. We also have video instructions available. They are guaranteed for ten years with spare parts available indefinitely.

## AMELIA 100 TABLE

Product Code: PE-AME100

### Dimensions:

- Width: 100 cm
- Length: 100 cm
- Height: 71 cm
- Parasol Hole: 50mm

### Construction:

Pressure-treated Scandinavian redwood (sustainably sourced with PEFC chain of custody) with galvanised bolts..



Zoom and rotate the image  
above and See In Your Space.



[Website link](#) for  
ordering and price.

## AMELIA 145 TABLE

Product Code: PE-AME145

### Dimensions:

- Width: 100 cm
- Length: 145 cm
- Height: 71 cm
- Parasol Hole: 50mm

### Construction:

Pressure-treated Scandinavian redwood (sustainably sourced with PEFC chain of custody) with galvanised bolts..



Zoom and rotate the image  
above and See In Your Space.



[Website link](#) for  
ordering and price.

## **AMELIA 168 TABLE**

*Product Code:* PE-AME168

### *Dimensions:*

- Width: 100 cm
- Length: 168 cm
- Height: 71 cm
- Parasol Hole: 50mm

### *Construction:*

Pressure-treated Scandinavian redwood (sustainably sourced with PEFC chain of custody) with galvanised bolts..



[Website link](#) for ordering and price.

## AMELIA 145 EXTENDING OVAL PARTY-TOPS

Product Code:PE-AMETOPS

Dimensions:

Including the 145 cm x 100 cm Amelia table, with the Party tops sliding into the 145cm side:

- Length: 254cm
- Width: 145cm
- Height: 71cm

Construction:

Pressure-treated Scandinavian redwood (sustainably sourced with PEFC chain of custody)



Zoom and rotate the image above and See In Your Space.



[Website link](#) for ordering and price.

## AMELIA 207 TABLE

Product Code: PE-AME168

### Dimensions:

- Width: 100 cm
- Length: 207 cm
- Height: 71 cm
- Parasol Hole: 50mm

### Construction:

Pressure-treated Scandinavian redwood (sustainably sourced with PEFC chain of custody) with galvanised bolts..



Zoom and rotate the image above and See In Your Space.



[Website link](#) for ordering and price.



Amelia 207 table with Elli  
Flip-leg chairs.

## MARGOT 127 TABLE

Product Code: PE-MAR127

### Dimensions:

- Diameter: 127 cm
- Height: 71 cm
- Parasol Hole: 50mm

### Construction:

Pressure-treated Scandinavian redwood (sustainably sourced with PEFC chain of custody) with galvanised bolts..



Zoom and rotate the image above and See In Your Space.



[Website link](#) for ordering and price.



## MARGOT 156 TABLE

Product Code: PE-MAR156

Dimensions:

- Diameter: 156 cm
- Height: 71 cm
- Parasol Hole: 50mm

Construction:

Pressure-treated Scandinavian redwood (sustainably sourced with PEFC chain of custody) with galvanised bolts..



Zoom and rotate the image  
above and See In Your Space.



[Website link](#) for  
ordering and price.

## SUNSHINE TABLE

Product Code: PE-SUN100

Dimensions:

- Diameter: 100 cm
- Height: 71 cm
- Parasol Hole: 50mm

Construction:

Pressure-treated Scandinavian redwood (sustainably sourced with PEFC chain of custody) with galvanised bolts..



[Website link](#) for ordering and price.



Margot 156 table with Elli chairs

## BIRGITTA BISTRO SET

Product Code: PE-BIR-SET2

Dimensions:

Table:

- Width: 60 cm
- Length: 120 cm
- Height: 90 cm

Stool:

- Width: 40 cm
- Length: 40 cm
- Height: 66 cm



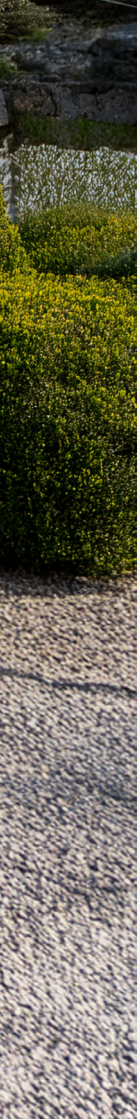
[Website link](#) for  
ordering and price.







SMALL OCCASIONAL TABLES



## SMALL OCCASIONAL TABLES

A collection of smaller garden tables the design of which match our larger garden furniture items. The low level tables - the *Clara Coffee Table* (pictured left), the *Adirondack Table* and the *Pirko Table* also work well as footstalls.

Our *Roaa* table is a mini garden bistro table and is pictured with two of our elegant *Viking Chairs*.

A coat of our furniture protector, every couple of years, keeps the wood in good looking good - see *Care and Maintenance*. All our wooden items, can remain outdoors throughout the year however we do offer covers for most items.

All items require a degree of self-assembly, using the guides provided. We also have video instructions available. They are guaranteed for ten years with spare parts available indefinitely.

## CLARA COFFEE TABLE

Product Code: PE-CCT01

Dimensions:

- Length: 100cm
- Width: 54cm
- Height: 32cm

Construction:

Pressure-treated Scandinavian redwood (sustainably sourced with PEFC chain of custody) with galvanised bolts..



[Website link](#) for ordering and price.



## ADIRONDACK TABLE/FOOTSTALL

Product Code: PE-ADI005

Dimensions:

- Table Width: 54 cm
- Table Depth: 50 cm
- Table Height: 32 cm

Construction:

Pressure-treated Scandinavian redwood (sustainably sourced with PEFC chain of custody) with galvanised bolts..



[Website link](#) for  
ordering and price.

## PIRKO TABLE

Product Code: PE-PIR001:

- Width: 40cm
- Depth: 30cm
- Height: 40cm

Construction:

Pressure-treated Scandinavian redwood (sustainably sourced with PEFC chain of custody) with galvanised bolts..



[Website link](#) for  
ordering and price.

## ROSA TABLE

Product Code: PE

### Dimensions:

- Table Width: 54 cm
- Table Depth: 50 cm
- Table Height: 32 cm

### Construction:

Pressure-treated Scandinavian redwood (sustainably sourced with PEFC chain of custody) with galvanised bolts..



[Website link](#) for  
ordering and price.



CUSHIONS, CANOPIES, MATTRESSES



## CUSHIONS, CANOPIES, MATTRESSES

Cushions and mattresses for our chairs, recliners, swings and rockers add an essential 'wow' factor as well as being extremely comfortable and practical. Similarly, canopies for our swings and day beds, provide welcome shade and protection from the sun.

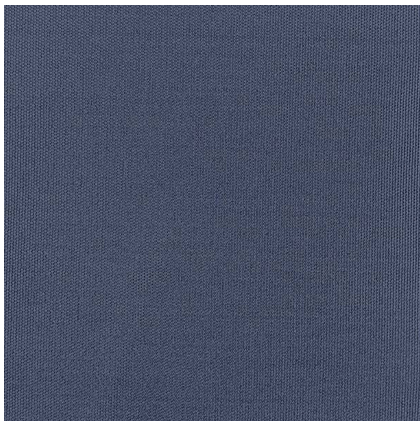
These items are made by us, in South Devon, specifically to fit our outdoor garden furniture. We are also able to make cushions as a contract service to other brands.

Over many years we have refined our sourcing of fabrics and materials to produce the highest specification for outdoor furniture cushions. Our fabrics are 100% acrylic, a soft as cotton drill, and do not fade in the sun or rot. The filling is polyester fibre which does not hold water, and dries quickly. However, although our cushions cope well with a shower and the occasional down-pour, it is not the intention that they remain in place, outdoors, throughout the year. You may find our storage boxes are a good place to keep your cushions when not in use. The cushions can also be dry cleaned, and spots can be washed with warm soapy water and rinsed by hose.

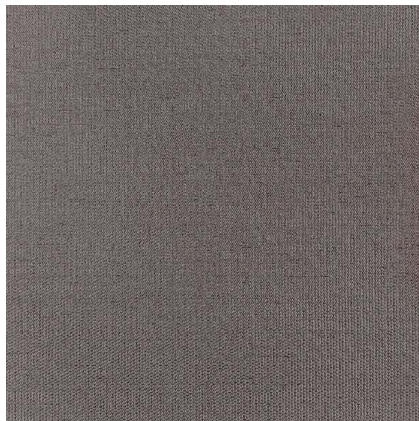
Canopy fabrics are made from woven mesh pvc coated polypropylene.

All items meet the requirements of the fire safety regulations for outdoor furniture.

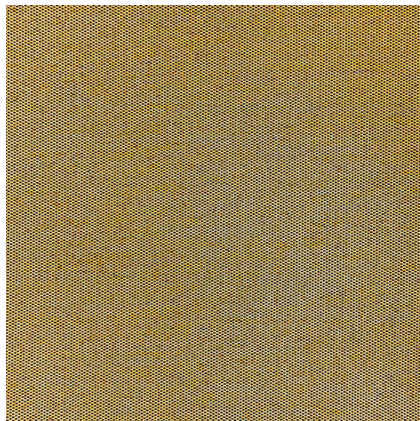
*Pictured left is the Rowena Double Rocking Sunbed with mattress in Frost Blue.*



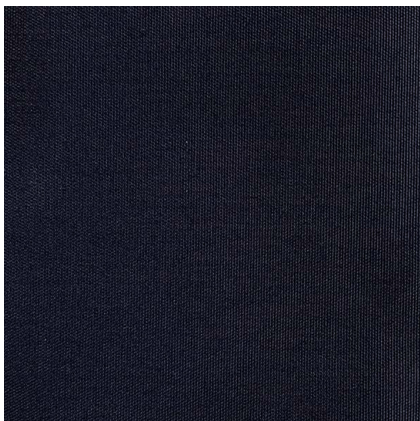
Frost Blue



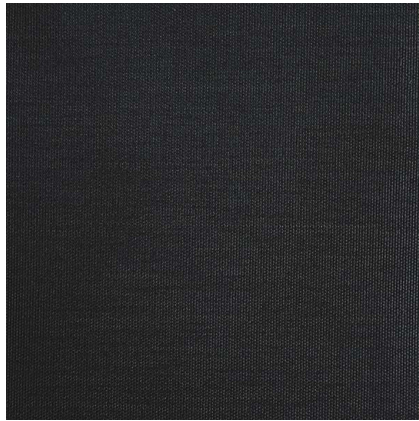
Harbour Grey



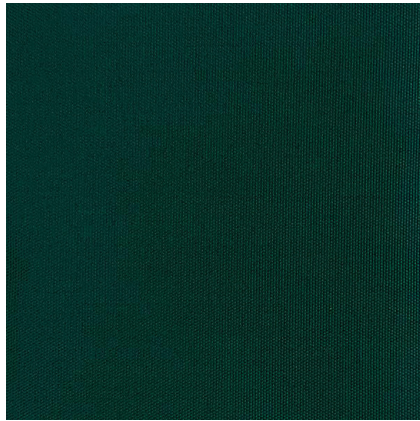
Muted Gold



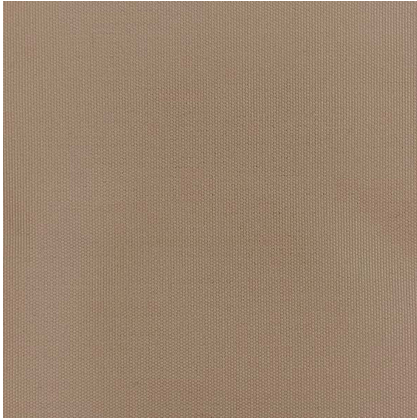
Navy Blue



Graphite



Dark Green



Sand

Displayed here our eight colour choices for cushions and mattresses.

These colours are from photographs of the fabrics but please be aware that colours appear differently depending on the level of light . They may also appear differently when viewed digitally according to your screen's specification.

In any case the colours in the pictures that follow will invariably look different to the colours opposite. If colour choice is crucial, then please request a fabric swatch.



Fucshia

## ELLI CHAIR CUSHION

This cushion fits both the Elli Static and Flip leg models.

### Product Codes:

- EF-ELCU-NVB: Navy Blue
- EF-ELCU-FUC: Fuchsia
- EF-ELCU-DGR: Dark Green
- EF-ELCU-FBL: Frost Blue
- EF-ELCU-GPH: Graphite
- EF-ELCU-HGY: Harbour Grey
- EF-ELCU-MGD: Muted Gold
- EF-ELCU-SND: Sand

### Dimensions:

- Width: 50.8 cm
- Length: 101.6 cm

### Construction:

Olefin fabric 100% Acrylic with polyester fibre filling.

### Compliance:

Fire resistant in accordance with *Furniture and Furnishings (Fire Safety) Regulations 1988/1989, 1993 and 2010*



Elli Cushion in Navy Blue.



[Website link](#) for ordering and price.



## ELLI HIGH BACK CHAIR CUSHION

### Product Codes:

- EF-ELHBCU-DGR: Dark Green
- EF-ELHBCU-FUC: Fuchsia
- EF-ELHBCU-NVB: Navy Blue
- EF-ELHBCU-FBL: Frost Blue
- EF-ELHBCU-GPH: Graphite
- EF-ELHBCU-HGY: Harbour Grey
- EF-ELHBCU-MGD: Muted Gold
- EF-ELHBCU-SND: Sand / High Back

### Dimensions:

- Width: 50.8 cm
- Length: 124 cm

### Construction:

Olefin fabric 100% Acrylic with polyester fibre filling.

### Compliance:

Fire resistant in accordance with *Furniture and Furnishings (Fire Safety) Regulations 1988/1989, 1993 and 2010*



[Website link](#) for ordering and price.

High Back Cushion in Frost Blue.

## ADIRONDACK CUSHION

This cushion fits both the Adirondack and the rocekr

Product Codes:

EF-ADCU-DGR: Dark Green

EF-ADCU-FUC: Fuchsia

EF-ADCU-NVB: Navy Blue

EF-ADCU-FBL: Frost Blue

EF-ADCU-GPH: Graphite

EF-ADCU-HGY: Harbour Grey

EF-ADCU-MGD: Muted Gold

EF-ADCU-SND: Sand

Dimensions:

- Width: 50cm
- Length: 132cm

Construction:

Olefin fabric 100% Acrylic with polyester fibre filling.

Compliance:

Fire resistant in accordance with *Furniture and Furnishings (Fire Safety) Regulations 1988/1989, 1993 and 2010*



Adirondack Cushion in Navy Blue.



[Website link](#) for ordering and price.



Rowena Single Rocker with Cushion in Natural.

## RIKU SINGLE ROCKER CUSHION

### Product Codes:

EF-RKCU-DGR: Dark Green

EF-RKCU-NVB: Navy Blue

EF-RKCU-FUC: Fuchsia

EF-RKCU-SND: Sand

EF-RKCU-FBL: Frost Blue

EF-RKCU-GPH: Graphite

EF-RKCU-HGY: Harbour Grey

EF-RKCU-MGD: Muted Gold

### Dimensions:

- Width: 50.8 cm
- Length: 124 cm

### Construction:

Olefin fabric 100% Acrylic with polyester fibre filling.

### Compliance:

Fire resistant in accordance with *Furniture and Furnishings (Fire Safety) Regulations 1988/1989, 1993 and 2010*



Riku Rocker Cushion in Dark Green.



[Website link](#) for ordering and price.

## RIKU DOUBLE ROCKER CUSHION

### Product Codes:

EF-RKD-NVB: Navy Blue

EF-RKD-DGR: Dark Green

EF-RKD-FUC: Fuchsia

EF-RKD-FBL: Frost Blue

EF-RKD-GPH: Graphite

EF-RKD-HGY: Harbour Grey

EF-RKD-MGD: Muted Gold

EF-RKD-SND: Sand

### Dimensions:

- Width: 110.5 cm
- Length: 128.3 cm

### Construction:

Olefin fabric 100% Acrylic with polyester fibre filling.

### Compliance:

Fire resistant in accordance with *Furniture and Furnishings (Fire Safety) Regulations 1988/1989, 1993 and 2010*



Riku Double Rocker Cushion in Dark Green.



[Website link](#) for ordering and price.

## ROWENA SINGLE ROCKER CUSHION

### Product Codes:

EF-RWS-DGR: Dark Green  
EF-RWS-FBL: Frost Blue  
EF-RWS-FUC: Fuchsia  
EF-RWS-GPH: Graphite  
EF-RWS-HGY: Harbour Grey  
EF-RWS-MGD: Muted Gold  
EF-RWS-NVB: Navy Blue  
EF-RWS-SND: Sand / Single

### Dimensions:

- Width: 60cm
- Length: 186cm

### Construction:

Olefin fabric 100% Acrylic with polyester fibre filling.

### Compliance:

Fire resistant in accordance with *Furniture and Furnishings (Fire Safety) Regulations 1988/1989, 1993 and 2010*



Rowena Single Rocker Cushion in Shocking Fuchsia.



[Website link](#) for  
ordering and price.

## ROWENA DOUBLE ROCKER CUSHION

### Product Codes:

- EF-RWS-DGR: Dark Green
- EF-RWS-FBL: Frost Blue
- EF-RWS-FUC: Fuchsia
- EF-RWS-GPH: Graphite
- EF-RWS-HGY: Harbour Grey
- EF-RWS-MGD: Muted Gold
- EF-RWS-NVB: Navy Blue
- EF-RWS-SND: Sand

### Dimensions:

- Width: 120 cm
- Length: 186 cm

### Construction:

Olefin fabric 100% Acrylic with polyester fibre filling.

### Compliance:

Fire resistant in accordance with *Furniture and Furnishings (Fire Safety) Regulations 1988/1989, 1993 and 2010*



Rowena Double Rocker Cushion in Natural.



[Website link](#) for  
ordering and price.

## STELLA BENCH CUSHION

### Product Codes:

- EF-STBC-FUC: Fuchsia
- EF-STBC-DGR: Dark Green
- EF-STBC-NVB: Navy Blue
- EF-STBC-FBL: Frost Blue
- EF-STBC-GPH: Graphite
- EF-STBC-HGY: Harbour Grey
- EF-STBC-MGD: Muted Gold
- EF-STBC-SND: Sand

### Dimensions:

- Width: 73 cm
- Length: 113 cm

### Construction:

Olefin fabric 100% Acrylic with polyester fibre filling.

### Compliance:

Fire resistant in accordance with *Furniture and Furnishings (Fire Safety) Regulations 1988/1989, 1993 and 2010*



Stella Bench Cushion in *Sand*.



[Website link](#) for  
ordering and price.



## NOJATA SUNBED MATTRESS

### Product Codes:

EF-NM-NVB: Navy Blue

EF-NM-FUC: Fuchsia

EF-NM-DGR: Dark Green

EF-NM-FBL: Frost Blue

EF-NM-GPH: Graphite

EF-NM-HGY: Harbour Grey

EF-NM-MGD: Muted Gold

EF-NM-SND: Sand

### Dimensions:

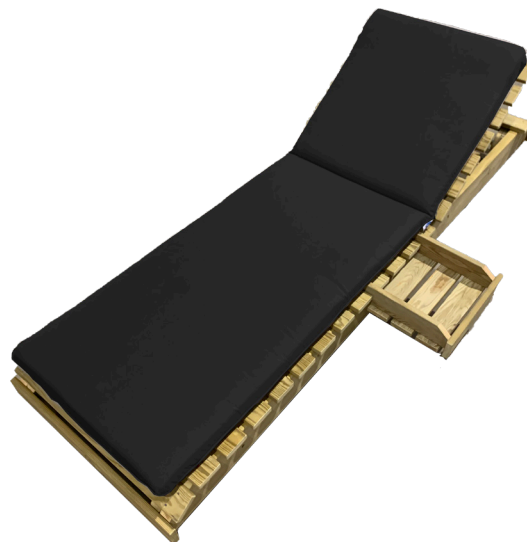
- Width: 58.4 cm
- Length: 182.9 cm

### Construction:

Olefin fabric 100% Acrylic with polyester fibre filling.

### Compliance:

Fire resistant in accordance with *Furniture and Furnishings (Fire Safety) Regulations 1988/1989, 1993 and 2010*



Nojata Sunbed Mattress in Graphite.



[Website link for ordering and price.](#)

## LILLI SWING CUSHION

### Product Codes:

EF-LICU-FBL: Frost Blue  
EF-LICU-GPH: Graphite  
EF-LICU-HGY: Harbour Grey  
EF-LICU-MGD: Muted Gold  
EF-LICU-SND: Sand  
EF-LICU-DGR: Dark Green  
EF-LICU-FUC: Fuchsia  
EF-LICU-NVB: Navy Blue

### Dimensions:

- Width: 118 cm
- Height: 104 cm

### Construction:

Olefin fabric 100% Acrylic with polyester fibre filling.

### Compliance:

Fire resistant in accordance with *Furniture and Furnishings (Fire Safety) Regulations 1988/1989, 1993 and 2010*



Lilli Swing Cushion in Navy Blue, also showing canopy in Blue.



[Website link](#) for  
ordering and price.

## LILLI SWING HIGH BACK CUSHION

### Product Codes:

EF-LIHBCU--NVB: Navy Blue

EF-LIHBCU--FUC: Fuchsia

EF-LIHBCU--DGR: Dark Green

EF-LIHBCU--FBL: Frost Blue

EF-LIHBCU--GPH: Graphite

EF-LIHBCU--HGY: Harbour Grey

EF-LIHBCU--MGD: Muted Gold

EF-LIHBCU--SND: Sand

### Dimensions:

- Width: 118 cm
- Height: 127 cm

### Construction:

Olefin fabric 100% Acrylic with polyester fibre filling.

### Compliance:

Fire resistant in accordance with *Furniture and Furnishings (Fire Safety) Regulations 1988/1989, 1993 and 2010*



Lilli High Back Swing Cushion in Natural.



[Website link](#) for ordering and price.

## TERASSI SWING CUSHION

### Product Codes:

- EF-TSCU-DGR: Dark Green
- EF-TSCU-FBL: Frost Blue
- EF-TSCU-FUC: Fuchsia
- EF-TSCU-GPH: Graphite
- EF-TSCU-HGY: Harbour Grey
- EF-TSCU-MGD: Muted Gold
- EF-TSCU-NVB: Navy Blue
- EF-TSCU-SND: Sand

### Dimensions:

- Width: 174 cm
- Height: 104 cm

### Construction:

Olefin fabric 100% Acrylic with polyester fibre filling.

### Compliance:

Fire resistant in accordance with *Furniture and Furnishings (Fire Safety) Regulations 1988/1989, 1993 and 2010*



Terassi Swing Cushion in Navy Blue, also showing canopy in Blue.



[Website link](#) for ordering and price.

## TERASSI SWING HIGH BACK CUSHION

### Product Codes:

- EF-TSHBCU-FUC: Fuchsia
- EF-TSHBCU-DGR: Dark Green
- EF-TSHBCU-NVB: Navy Blue
- EF-TSHBCU-FBL: Frost Blue
- EF-TSHBCU-GPH: Graphite
- EF-TSHBCU-HGY: Harbour Grey
- EF-TSHBCU-MGD: Muted Gold
- EF-TSHBCU-SND: Sand

### Dimensions:

- Width: 174 cm
- Height: 127 cm

### Construction:

Olefin fabric 100% Acrylic with polyester fibre filling.

### Compliance:

Fire resistant in accordance with *Furniture and Furnishings (Fire Safety) Regulations 1988/1989, 1993 and 2010*



Terassi High Back Swing Cushion in Harbour Grey also showing canopy in Black.



[Website link](#) for ordering and price.

## SERENA SWINGING DAYBED MATTRESS

### Product Codes:

EF-SSBM-NVB: Navy Blue  
EF-SSBM-DGR: Dark Green  
EF-SSBM-FUC: Fuchsia  
EF-SSBM-FBL: Frost Blue  
EF-SSBM-GPH: Graphite  
EF-SSBM-HGY: Harbour Grey  
EF-SSBM-MGD: Muted Gold  
EF-SSBM-SND: Sand

### Dimensions:

- Width: cm
- Height: cm

### Construction:

Olefin fabric 100% Acrylic with polyester fibre filling.

### Compliance:

Fire resistant in accordance with *Furniture and Furnishings (Fire Safety) Regulations 1988/1989, 1993 and 2010*



Serena Swinging Daybed Cushion in *Natural*



[Website link](#) for  
ordering and price.

## SWING CANOPY MESH COLOUR OPTIONS



Our mesh swing canopies diffuse the sunshine without blocking it completely. They are made from PVC coated polypropylene. This hard-wearing material is, non-rot, non-fade, and is resistant to mildew. It can safely be left outside all year round and can be cleaned with soapy water and a hose.

Displayed here are the four colour choices for the swing canopies: *black, natural, green and blue.*

Please be aware that colours appear differently depending on the level of light . They may also appear differently when viewed digitally according to your screen's specification. If colour choice is crucial, then please request a fabric swatch.

## PEPE FURNITURE PROTECTOR

### *Product Codes:*

PP-FP-1: 1 litre

PP-FP-2.5: 2.5 litres

PP-FP-500: 0.5 litre

### *Description:*

A concentrated, one coat, clear, water repellent wax coating, formulated for the protection of externally exposed timber surfaces that produces a rich professional semi-gloss finish. The grain and texture of the wood is accentuated, and the timber is protected from drying out. The dried coating provides UV resistance, water droplet repellence and protection against moisture ingress, warping, swelling, cracking, and splitting, maintaining timber in a bright, clean condition. Pepe Furniture Protector is not a varnish, its place is in the wood not on the surface. It protects by penetrating the wood, waterproofing, and enhancing the grain. Ideal for use on wooden garden furniture.

With the exception of accessories, all *Pepe Garden Furniture* wooden products, are sent with *Pepe Furniture Protector* included.

## CARE and MAINTENANCE





[Website link](#) for ordering and price.

## PEPE FURNITURE COVERS

### *Description:*

Pepe wooden garden furniture products can stay outdoors throughout the year unprotected by a cover. However, we do offer high quality covers, designed to offer unbeatable protection from the elements, staining from wet leaves, green mould and stuff that comes out of birds.

The swing covers have zip up fronts so you can cheerfully swing in the rain!

### *Manufacture:*

Made from strong 750 denier polyester fabric with sealed seams, eyelets and a draw cord around the base, the covers are available in five colours.

### *Colours:*

Available in five colours: *Beige, Black, Dark Green, Grey and Navy Blue.*

### *Product Codes:*

With five colours and twenty three covers there are 115 product codes for the covers. Please follow the QR code or link to the website and the codes are listed under each individual cover.



[Website link](#) for  
ordering and price.



Terassi Swing Cover over swing with canopy in Navy Blue.



Elli High Back cover in Navy Blue.

**Pepe Garden Furniture Limited**

9 Halwell Business Park  
Halwell, Totnes, Devon, TQ9 7LQ

Sales Telephone: 01803 229980  
Showroom, Warehouse & Administration: 01803 712712  
sales@pepegarden.co.uk

Registered in England and Wales, Company No 2739292



PEPE GARDEN FURNITURE

PEPEGARDEN.CO.UK